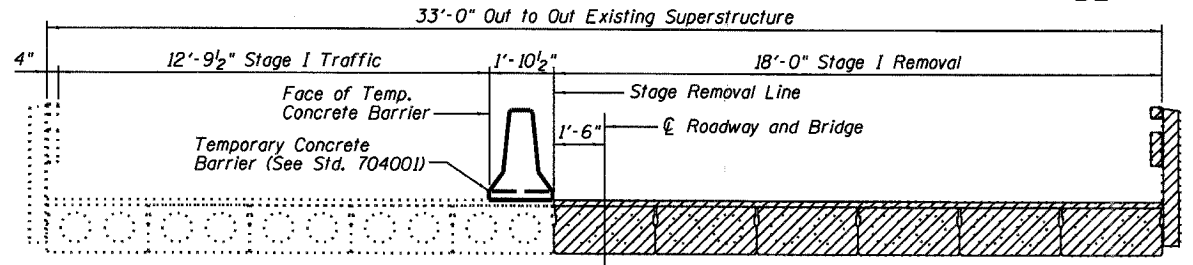


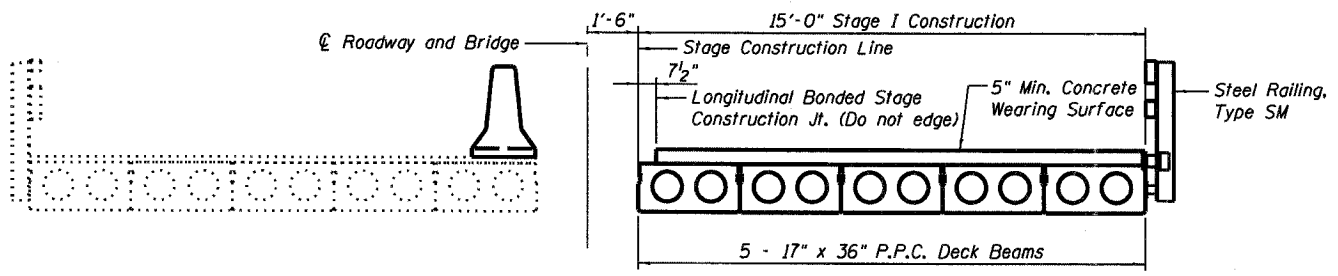
STATE OF ILLINOIS
DEPARTMENT OF TRANSPORTATION

ROUTE NO.	SECTION	COUNTY	SHEET NO.	SHEET NO.
F.A.P. 869	101BR-1	FRANKLIN	14	15 SHEETS
FED. ROAD DIST. NO. 7		ILLINOIS	FED. AID PROJECT	

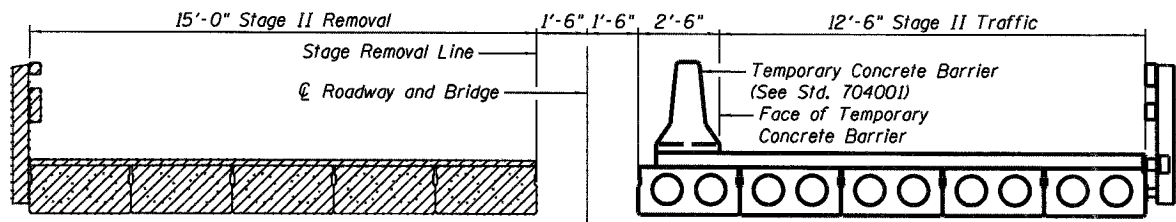
Contract #78024



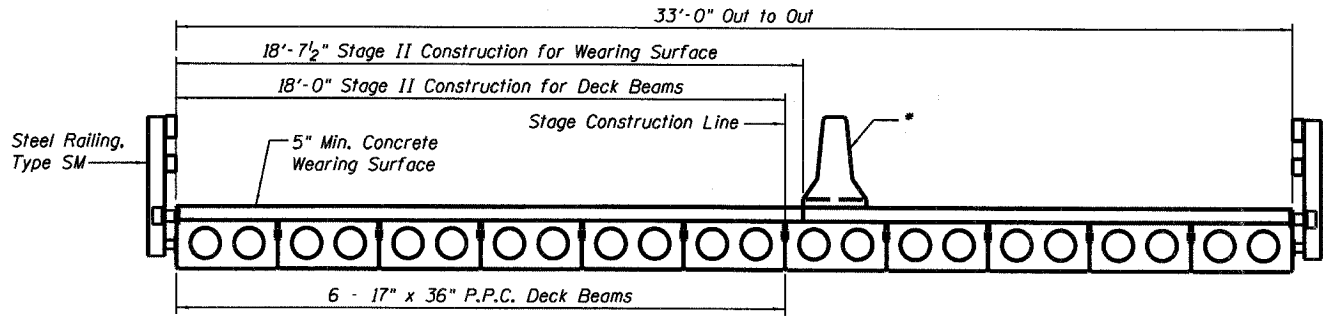
STAGE I REMOVAL
(Looking Upstation)



STAGE I CONSTRUCTION
(Looking Upstation)

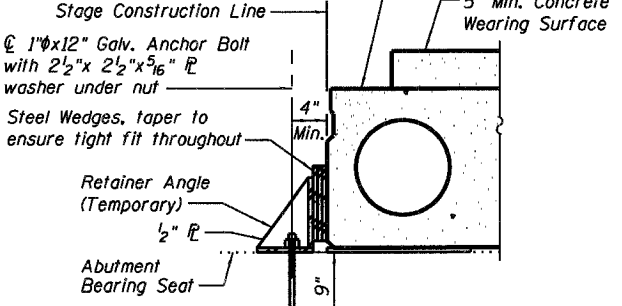
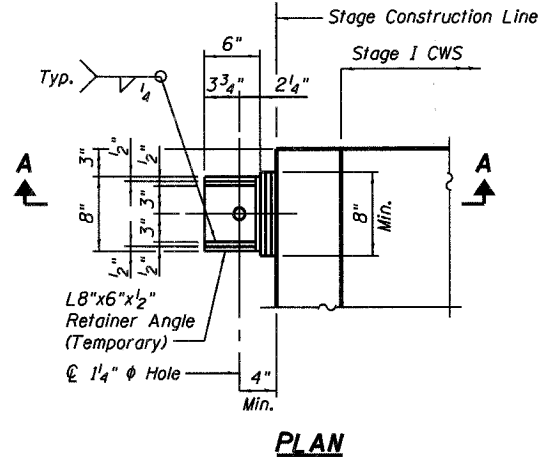


STAGE II REMOVAL
(Looking Upstation)



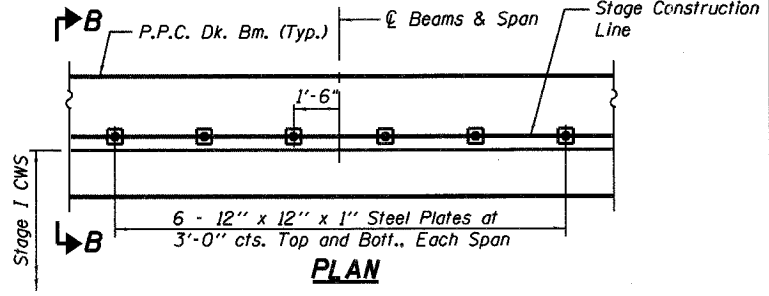
STAGE II CONSTRUCTION
(Looking Upstation)

* Temporary Concrete Barrier to be removed with Stage II Traffic Control upon completion of Stage II construction.

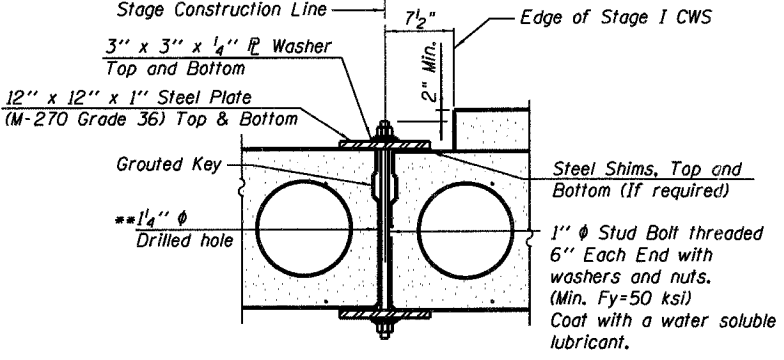


TEMPORARY RETAINER DETAILS AT STAGE CONSTRUCTION LINE

Temporary retainer angles are required at the expansion bearing ends of the beams to provide temporary lateral support during stage construction. Retainer angles shall be installed prior to forming the concrete wearing surface. Temporary retainer angles shall be removed prior to beam erection in Stage II Construction.
Anchor bolts shall be ASTM A 307 Gr. C or ASTM F1554 Gr. 36 All-thread.
Drilled and set anchor bolts shall be installed according to Article 521.06 of the Standard Specifications.
Anchor bolts shall be burned off flush with the bearing seat, ground smooth, and sealed with epoxy during removal.
Cost to furnish, install, and remove temporary retainer angles, anchor bolts and accessories is included with Precast Prestressed Concrete Deck Beams (17").



PLAN



SECTION B-B

CLAMPING PLATE

SHEAR KEY CLAMPING DETAILS

See Article 504.06 of the Standard Specifications for Stage Construction of Precast Prestressed Concrete Deck Beams.
Cost included with Precast Prestressed Concrete Deck Beams (17").

** As an alternate to the drilled holes, the Contractor may request the Fabricator to cast 2" diameter semi-circular recesses in the sides of each beam adjacent to the stage construction line. These recesses should align to form a hole at the appropriate locations for the clamping device bolts. If the Contractor elects to use this alternate, the details shall be identified on the shop drawings.

STAGE CONSTRUCTION DETAILS
ILL. ROUTE 34 OVER EWING CREEK
F.A.P. ROUTE 869 SECTION 101BR-1
FRANKLIN COUNTY
STATION 362+35.00
STRUCTURE NO. 028-0047



DESIGNED	RLM
CHECKED	MEL
DRAWN	AEC
CHECKED	RLM