

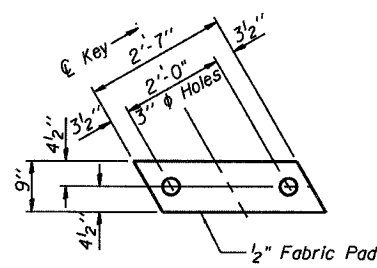
STATE OF ILLINOIS
DEPARTMENT OF TRANSPORTATION

ROUTE NO.	SECTION	COUNTY	SHEET	SHEET NO.
F.A.P. 869	101BR-1	FRANKLIN	18	5
FED. ROAD DIST. NO. 7	ILLINOIS	FED. AID PROJECT		15 SHEETS

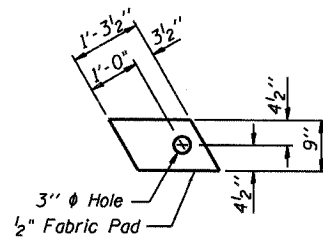
Contract #78024

NOTES

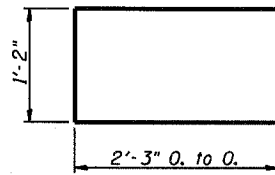
1. Prestressing steel shall be uncoated high strength, low relaxation 7-wire strand, Grade 270.
2. The nominal diameter shall be 1/2" and the nominal cross-sectional area shall be 0.153 sq. in.
3. Lifting loops shall be 2-1/2" ϕ -270 ksi strands, as shown.
4. Lifting loops shall be burned off after beams have been erected.
5. The 1" ϕ rods in the transverse tie assembly shall be tightened to a snug fit and the threads set. Pockets that receive transverse tie bar on outside shall be filled with grout after transverse tie assembly is in place.
6. Non prestressing steel shall conform to ASTM A 706 (IL MOD), Grade 60.
7. The bearing seat surfaces shall be adjusted by shimming to assure firm and even bearing. Two 1/8" fabric adjusting shims of the dimensions of the Exterior Bearing Pad shall be provided for each bearing.
8. Keyway surfaces shall be cleaned to remove form oil or other bond breaking material prior to shipment of the beams. Cleaning shall be done by sandblasting the keyway areas between top of the beam and the bottom edge of the key.
9. Corrosion Inhibitor, per Article 1020.05(b)(12) of the Standard Specifications, shall be used in the concrete for precast prestressed concrete deck beams.
10. Required Release Strength, f'ci, shall be 4,000 p.s.i.
11. See Sheet No. 11 of 15 for required fascia beam modifications for rail anchorage.



FABRIC BEARING PAD
(Interior)
(18 Required)

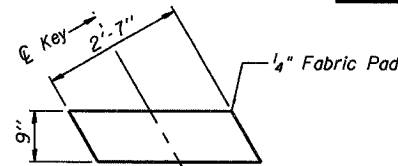


FABRIC BEARING PAD
(Exterior and Stage Const. Line)
(8 Required)

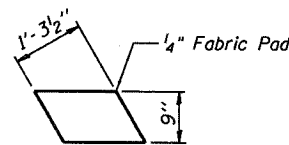


BAR U

FIXED

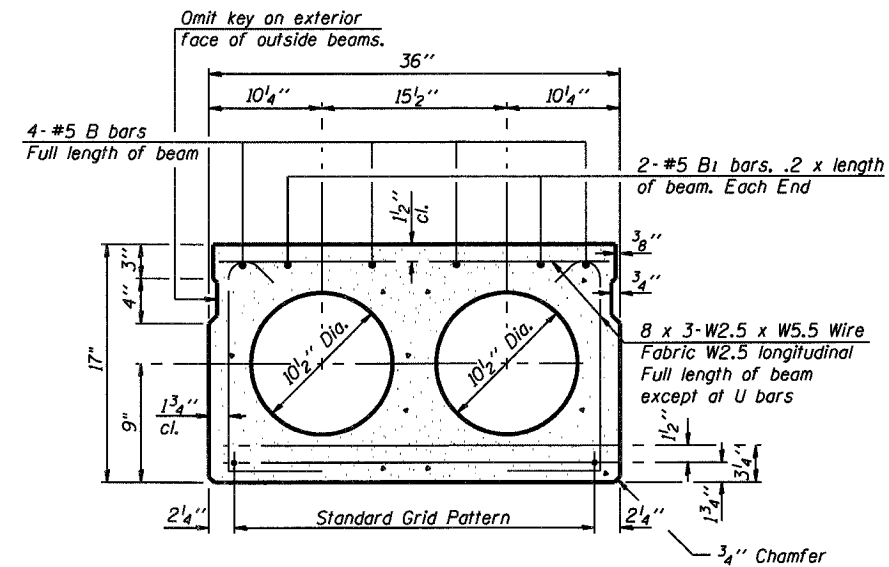


FABRIC BEARING PAD
(Interior)
(36 Required)



FABRIC BEARING PAD
(Exterior and Stage Const. Line)
(16 Required)

EXPANSION



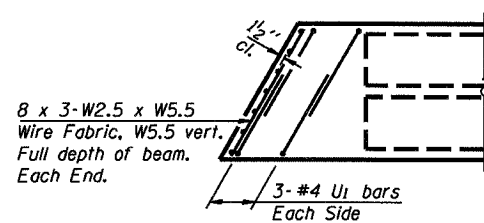
TYPICAL SECTION - 36" BEAM

15-1/2" ϕ Strands, Each Strand Stressed to 30,900 Lbs.
9-Strands 1 3/4" up, 4-Strands 3 1/4" up, 2-Strands 12" up

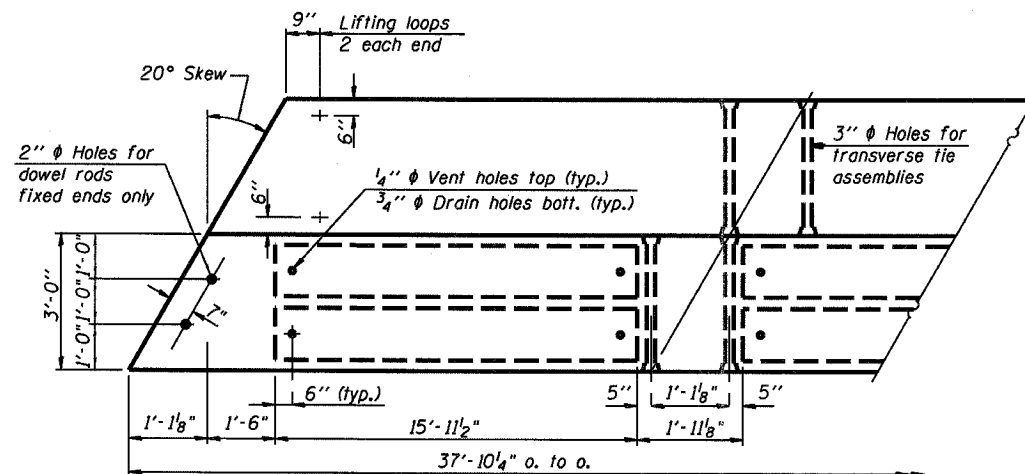
Note: Place strands symmetrically about ϕ of beam.

BILL OF MATERIAL - 36" BEAM

Item	Unit	Quantity
Precast Prestressed Conc. Deck Bms. (17")	Sq. Ft.	2,499

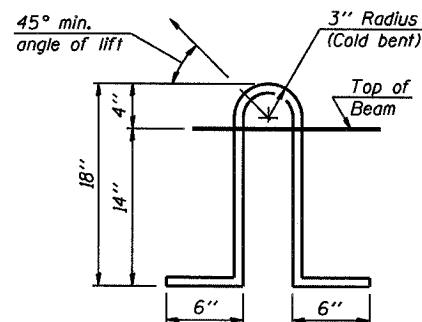


END PLAN

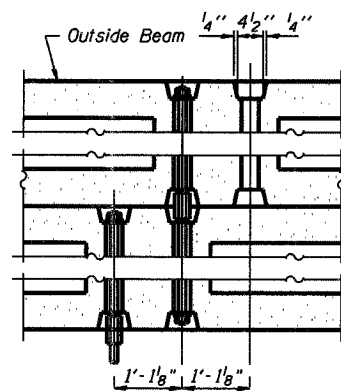


PLAN - 36" BEAM

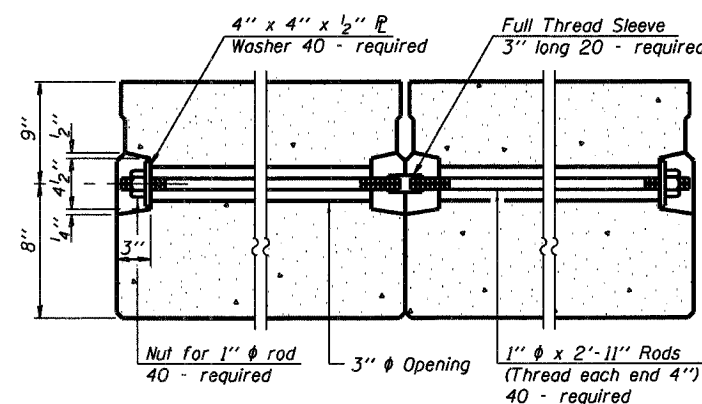
(22 Required)



LIFTING LOOP DETAIL



TYPICAL TRANSVERSE TIE ASSEMBLY



DESIGNED	RLM
CHECKED	MEL
DRAWN	AEC
CHECKED	RLM

SUPERSTRUCTURE DETAILS
17" DECK BEAMS
ILL. ROUTE 34 OVER EWING CREEK
F.A.P. ROUTE 869 SECTION 101BR-1
FRANKLIN COUNTY
STATION 362+35.00
STRUCTURE NO. 028-0047