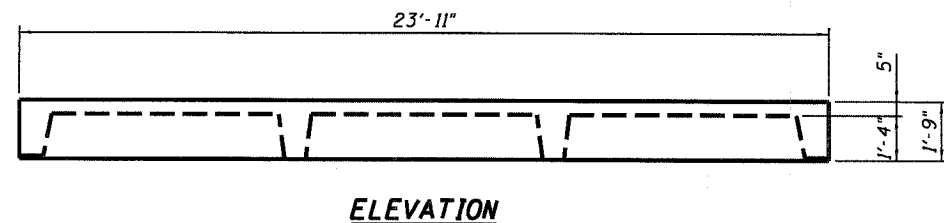


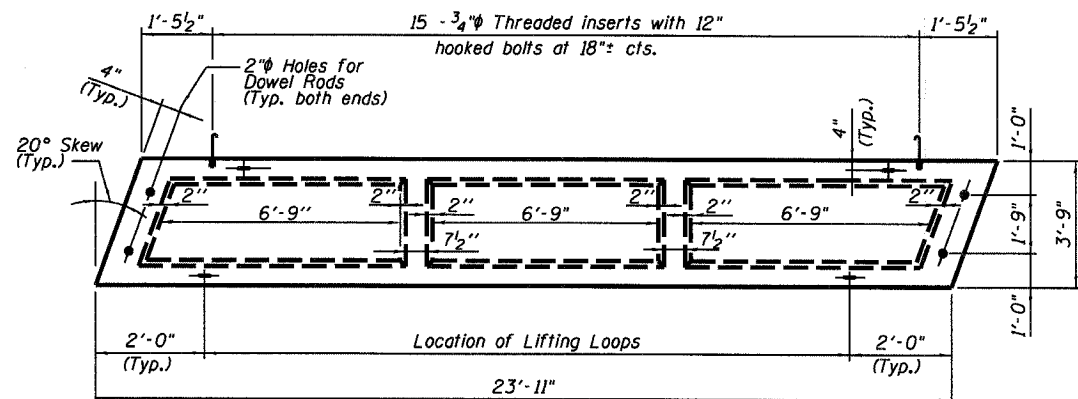
STATE OF ILLINOIS
DEPARTMENT OF TRANSPORTATION

| | | | | |
|-----------------------|----------|------------------|--------------|-----------|
| ROUTE NO. | SECTION | COUNTY | TOTAL SHEETS | SHEET NO. |
| F.A.P. 869 | 10IBR-1 | FRANKLIN | 19 | 15 SHEETS |
| FED. ROAD DIST. NO. 7 | ILLINOIS | FED. AID PROJECT | | |

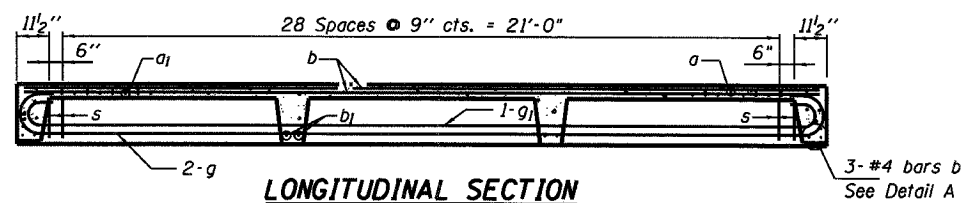
Contract #78024



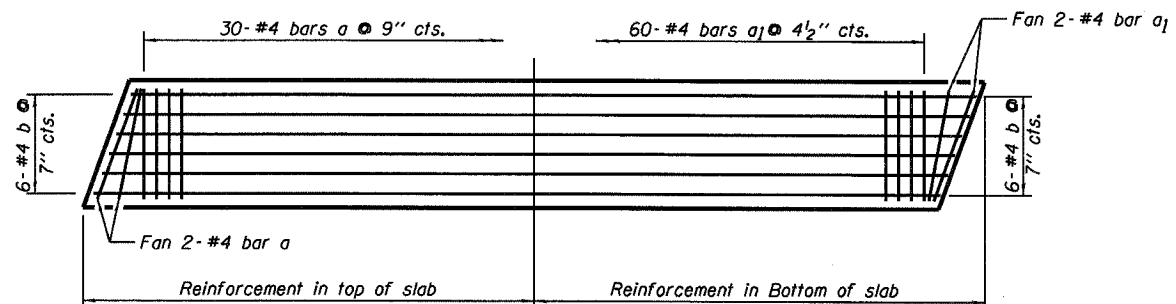
ELEVATION



TYPICAL PLAN OF BRIDGE SLAB
(4 Required)

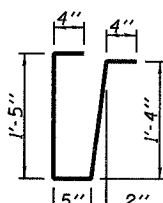


LONGITUDINAL SECTION

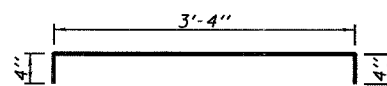


PLAN

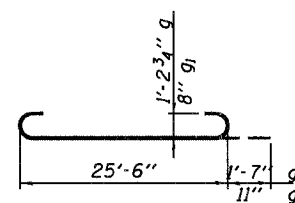
Showing Slab Reinforcement



BAR s

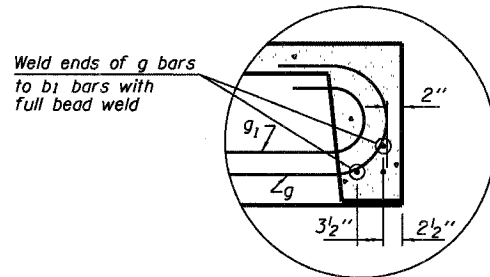


BAR a



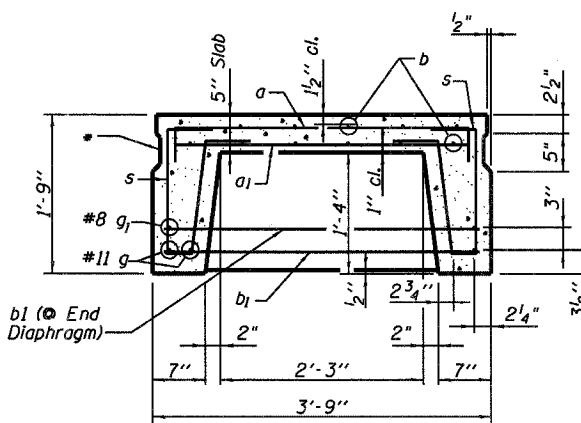
BARS g and g1

Note:
Tack welding of stirrups to bottom longitudinal reinforcement bars will not be permitted except as otherwise authorized in writing by the Engineer.



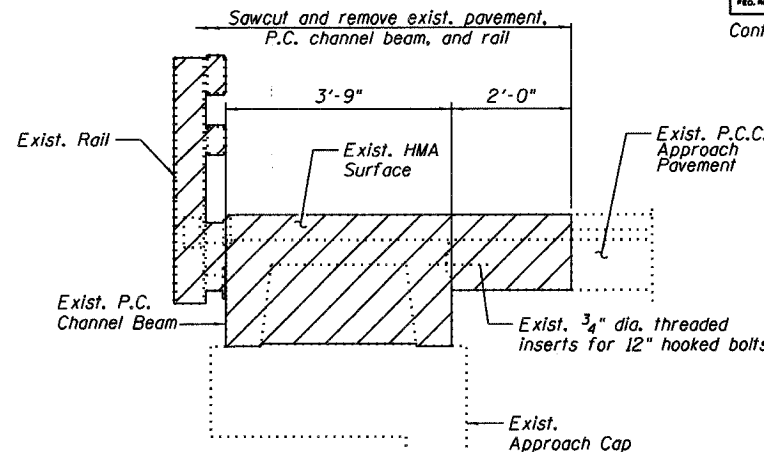
DETAIL A

Note:
The surface of the member shall not deviate more than 1/1200 of the full length of the member from a straight line connecting the two end points on the member's surface.



TYPICAL SECTION THRU BRIDGE SLAB

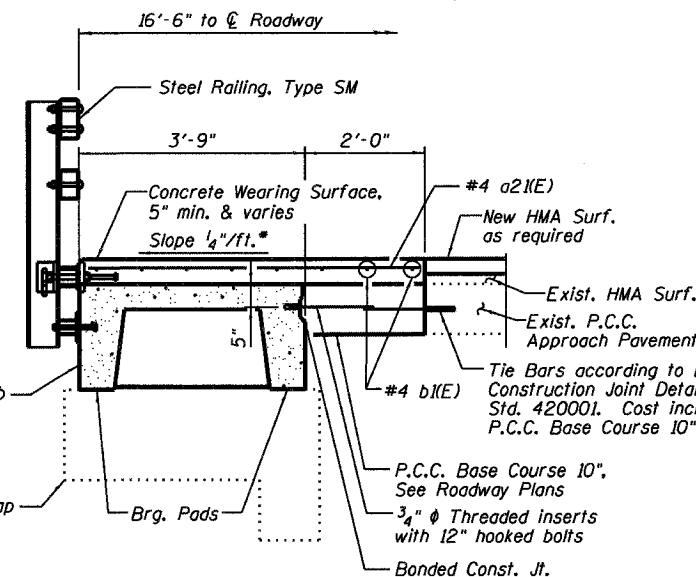
* Omit key on exterior face of outside beams.



LIMITS OF REMOVAL AT APPROACH SHOULDERS

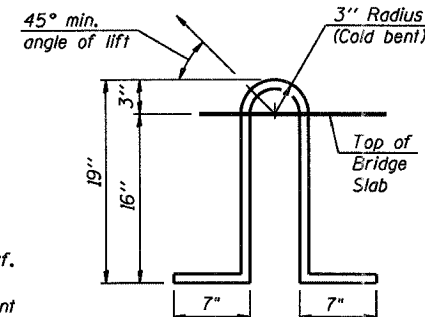
NOTES

Lifting loops shall be 2-1/2" φ-270 ksi strands, as shown.
Lifting loops shall be burned off after bridge slabs have been erected.
Reinforcing steel shall conform to ASTM A 706 (IL MOD), Grade 60.
The bearing seat surfaces shall be adjusted by shimming to assure firm and even bearing. Two 1/8" fabric adjusting shims of the dimensions of the Bearing Pad shall be provided for each bearing.
Keyway surfaces shall be cleaned to remove form oil or other bond breaking material prior to shipment of the bridge slabs. Cleaning shall be done by sandblasting the keyway areas between top of the bridge slabs and the bottom edge of the key.
Corrosion Inhibitor, per Article 1020.05(b)(12) of the Standard Specifications, shall be used in the concrete for precast concrete bridge slabs.
See Sheet No. 11 of 15 for required modifications for rail anchorage.
The precast concrete bridge slab shall be erected and aligned with the exterior face of the fascia deck beam after deck beams are in final position.
Cost of removing exist. P.C. channel beam, HMA Surface, and rail included with Removal of Exist. Precast Concrete Units. See Roadway Plans for measurements and payment for Pavement Removal and Replacement.



PROPOSED CROSS SECTION

* Cross slope shown applies to Concrete Wearing Surface

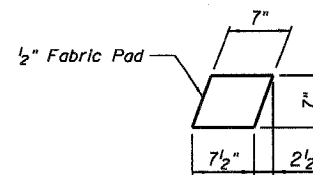


LIFTING LOOP DETAIL

BILL OF MATERIAL

| Item | Unit | Quantity |
|------------------------------|---------|----------|
| Precast Concrete Bridge Slab | Sq. Ft. | 359 |

PRECAST CONCRETE BRIDGE SLAB
ILL. ROUTE 34 OVER EWING CREEK
F.A.P. ROUTE 869 SECTION 10IBR-1
FRANKLIN COUNTY
STATION 362+35.00
STRUCTURE NO. 028-0047



BEARING PAD
(16 Required)



| | |
|----------|-----|
| DESIGNED | RLM |
| CHECKED | MEL |
| DRAWN | AEC |
| CHECKED | RLM |