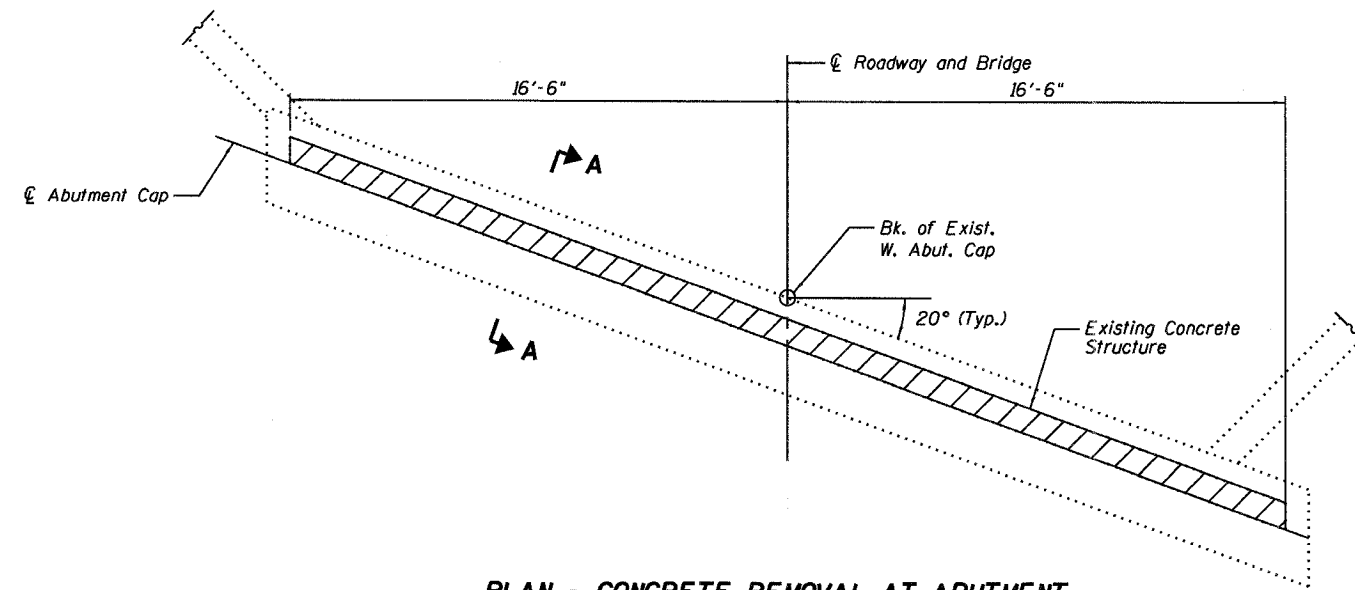


STATE OF ILLINOIS  
DEPARTMENT OF TRANSPORTATION

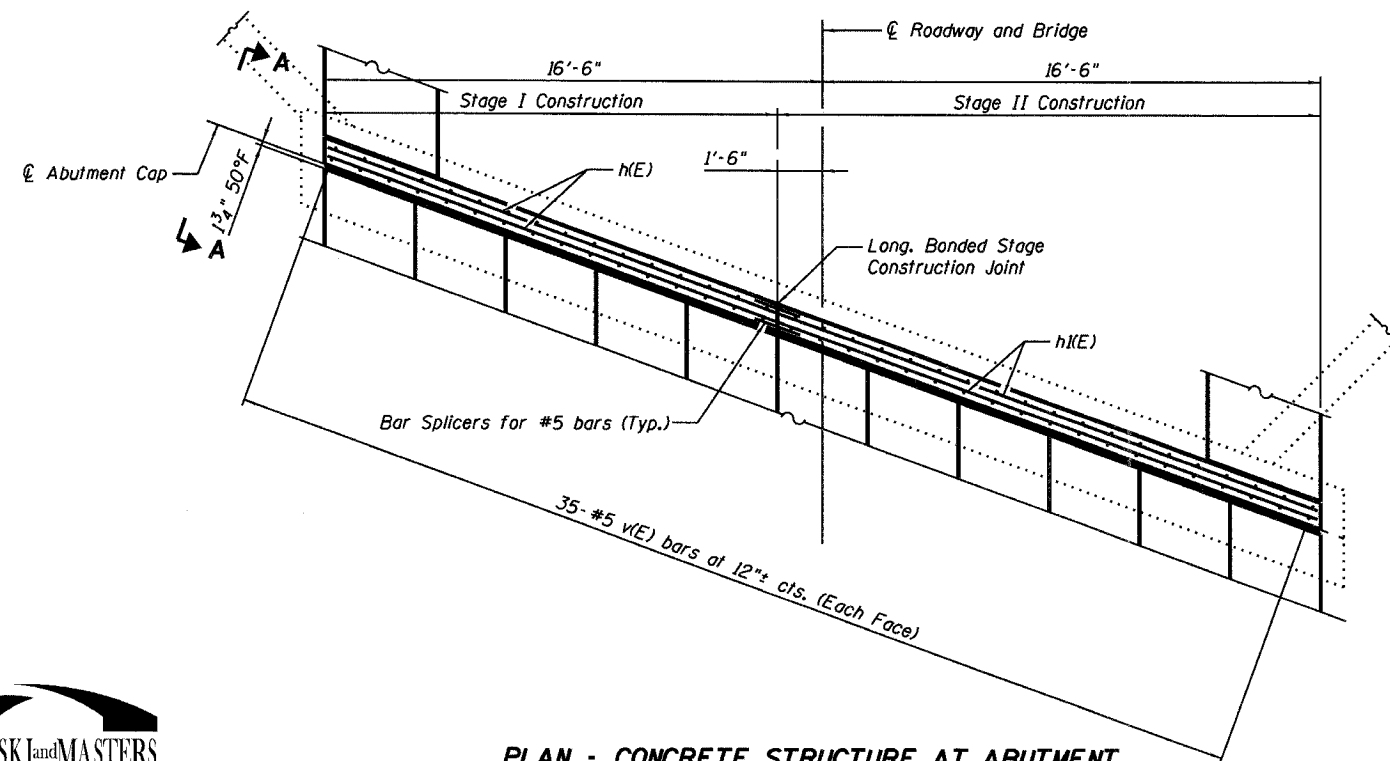
ROUTE NO.	SECTION	COUNTY	POST MILES	SHEET NO.
F.A.P. 869	101BR-1	FRANKLIN	20	7
FED. ROAD DIST. NO. 7				ILLINOIS
FED. AID PROJECT				15 SHEETS

Contract #78024

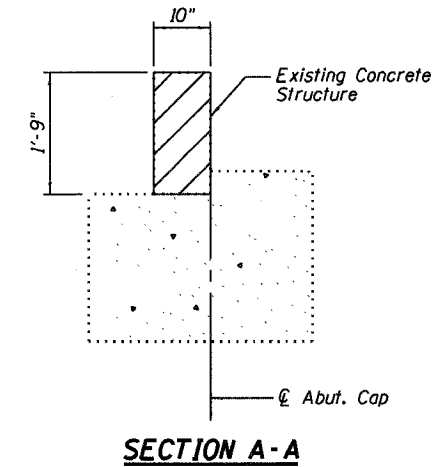


**PLAN - CONCRETE REMOVAL AT ABUTMENT**  
(West Abutment shown, East Abutment similar)

Removal of existing wearing surface and deck beams included with Removal of Existing Superstructures. Removal of existing P.C. channel beams included with Removal of Existing Precast Concrete Units. These items not shown for clarity.



**PLAN - CONCRETE STRUCTURE AT ABUTMENT**  
(West Abutment shown, East Abutment similar)



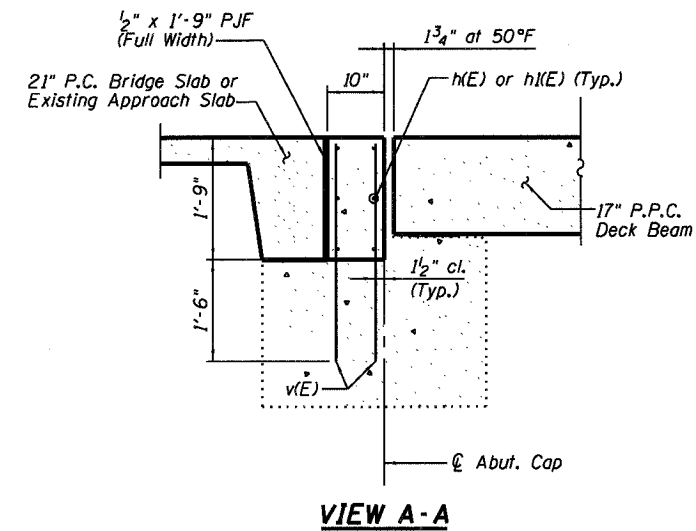
**SECTION A-A**

Note:  
Hatched areas indicate Concrete Removal.  
Existing reinforcement extending into new construction shall be cut off flush. Cost included with Concrete Removal.

**BILL OF MATERIAL**

Bar	No.	Size	Length	Shape
h(E)	12	#5	15'-7"	---
h(K)	12	#5	18'-11"	---
v(E)	140	#5	3'-0"	---
Reinforcement Bars, Epoxy Coated			Pound	870
Bar Splicers			Each	12
Concrete Removal			Cu. Yd.	3.8
Concrete Structures			Cu. Yd.	3.8

Reinforcement bars designated (E) shall be epoxy coated.



**VIEW A-A**

Note:  
Epoxy grout v(E) bars in drilled holes according to Section 584 of the Standard Specifications. Cost included with Concrete Structures.

**CONCRETE DETAILS AT EXPANSION ENDS**  
**ILL. ROUTE 34 OVER EWING CREEK**  
**F.A.P. ROUTE 869 SECTION 101BR-1**  
**FRANKLIN COUNTY**  
**STATION 362+35.00**  
**STRUCTURE NO. 028-0047**



DESIGNED	RLM
CHECKED	MEL
DRAWN	AEC
CHECKED	RLM