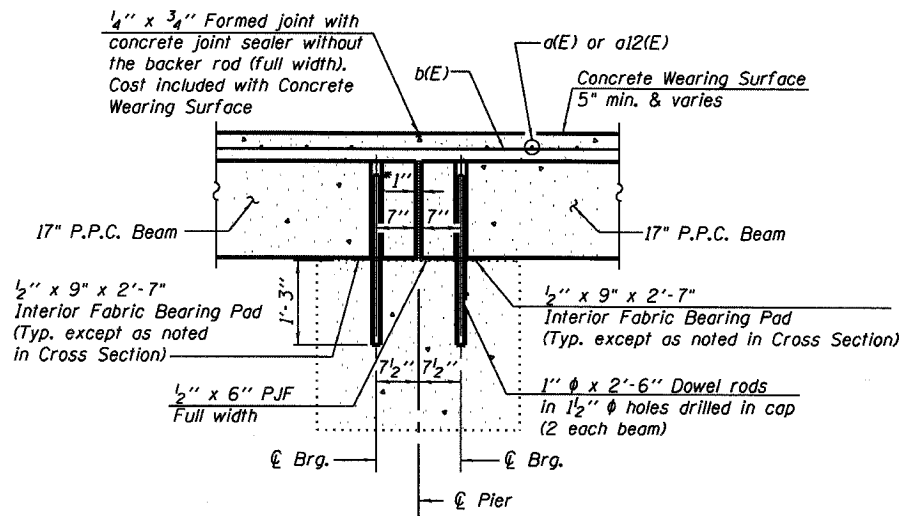


STATE OF ILLINOIS
DEPARTMENT OF TRANSPORTATION

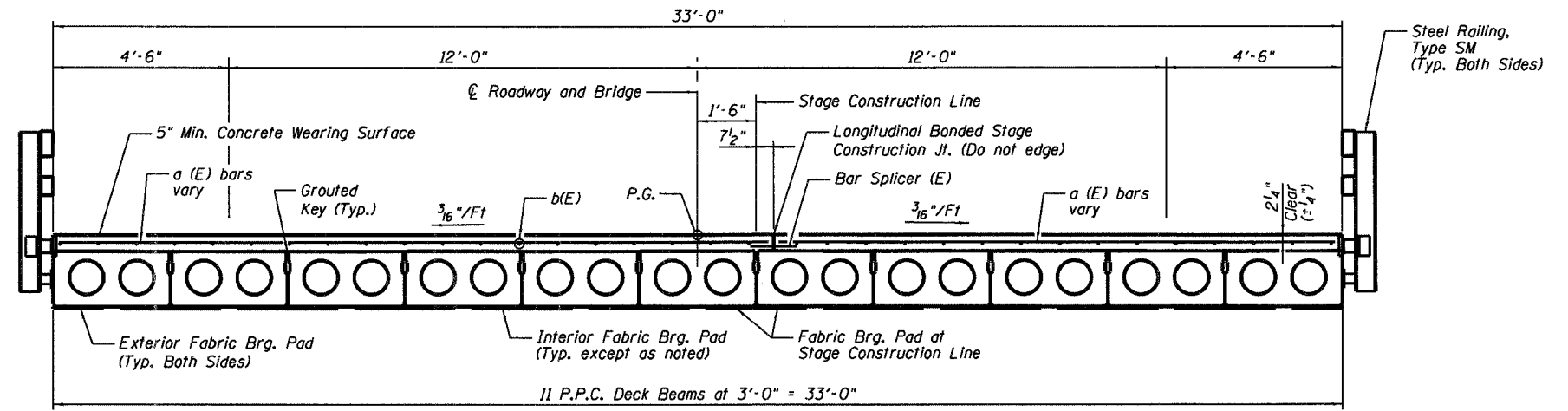
ROUTE NO.	SECTION	COUNTY	TOTAL SHEETS	SHEET NO.
F.A.P. 869	10IBR-1	FRANKLIN	22	9
FED. ROAD DIST. NO. 7	ILLINOIS	FED. AID PROJECT		15 SHEETS

Contract #78024

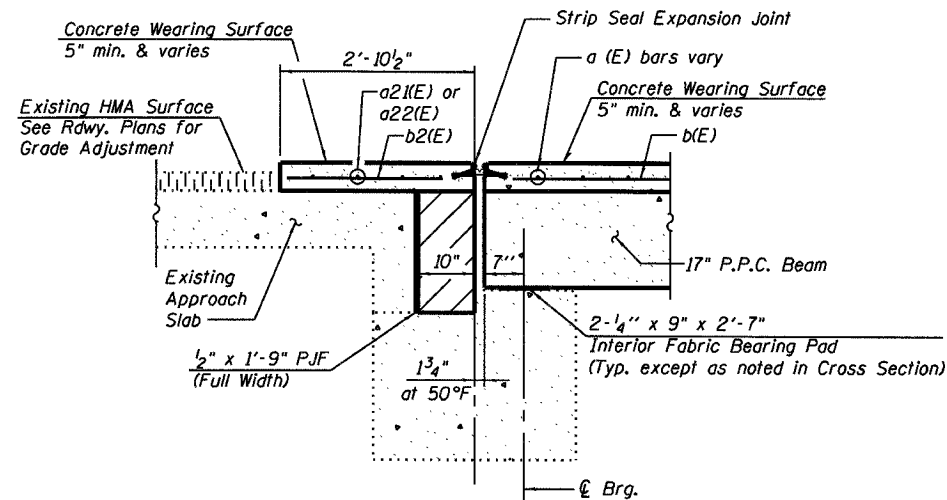


SECTION THRU PIER

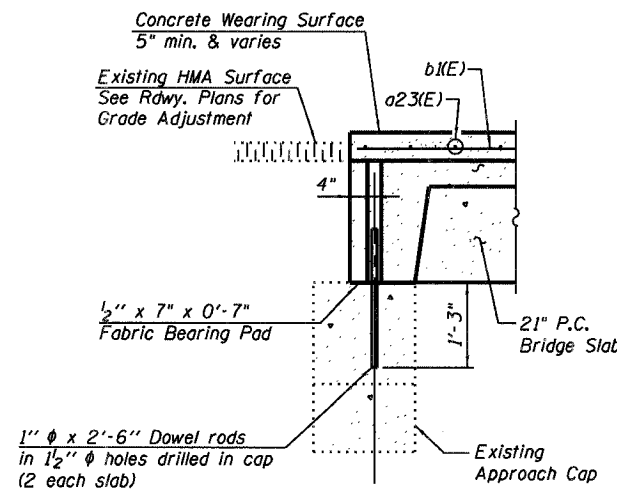
- 1" Jt. shall be filled with non-shrink grout. 1" dimension may vary to accommodate tolerance in beam lengths.



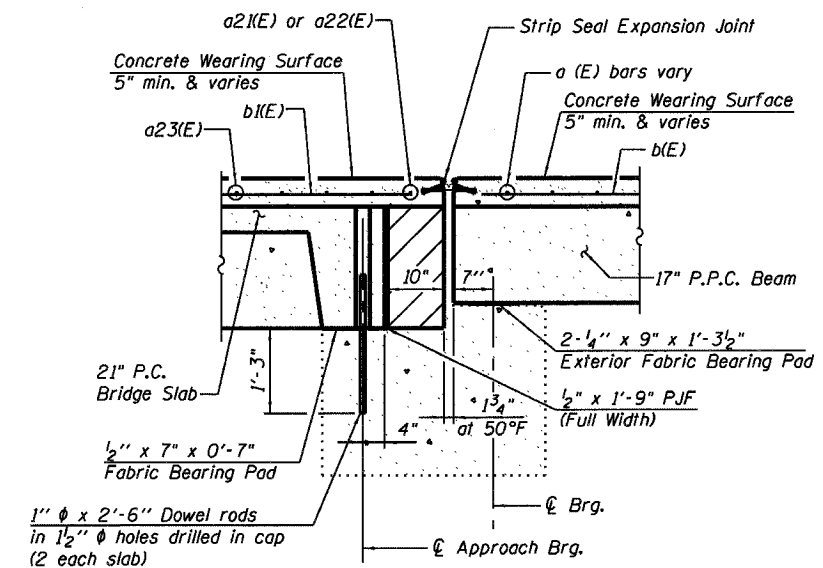
CROSS SECTION
(Looking Upstation)



SECTION THRU ABUTMENT AT APPROACH SLAB



SECTION THRU APPROACH CAP



SECTION THRU ABUTMENT AT SHOULDER



DESIGNED	RLM
CHECKED	MEL
DRAWN	AEC
CHECKED	RLM

Notes:
After beams have been erected, holes shall be drilled into substructure and anchor dowels placed. Dowel holes shall be filled with non-shrink grout to top of beam and allowed to cure min. 24 hrs. prior to grouting the shear keys.
All horizontal dimensions are at right angles to beam ends.
Hatched area to be poured after P.P.C. deck beams and P.C. bridge slab are in place. See Sheet No. 7 of 15 for concrete structures details.
See Sheet Nos. 5 and 6 of 15 for bearing pad details.
See Sheet No. 8 of 15 for concrete wearing surface details.
See Sheet No. 10 of 15 for strip seal expansion joint details.

SUPERSTRUCTURE DETAILS
SECTIONS AND JOINT DETAILS
ILL. ROUTE 34 OVER EWING CREEK
F.A.P. ROUTE 869 SECTION 10IBR-1
FRANKLIN COUNTY
STATION 362+35.00
STRUCTURE NO. 028-0047