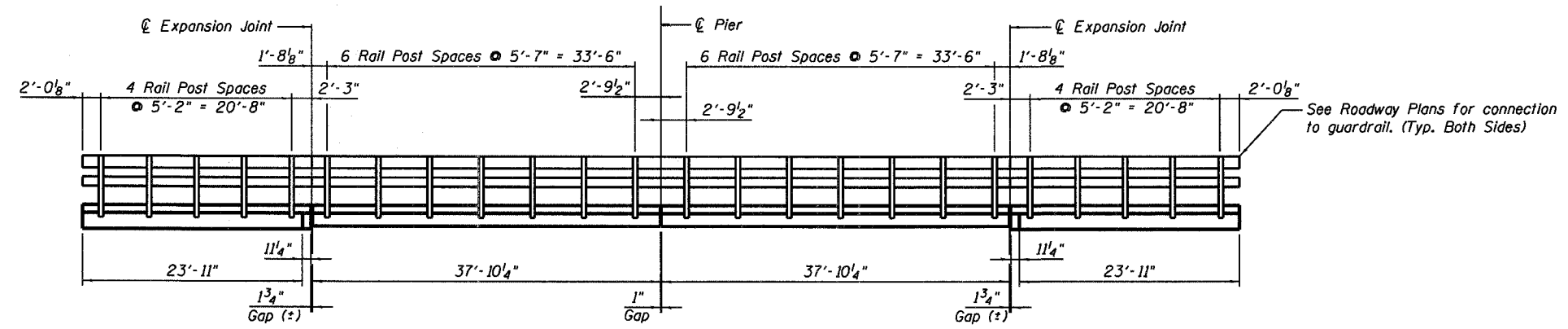


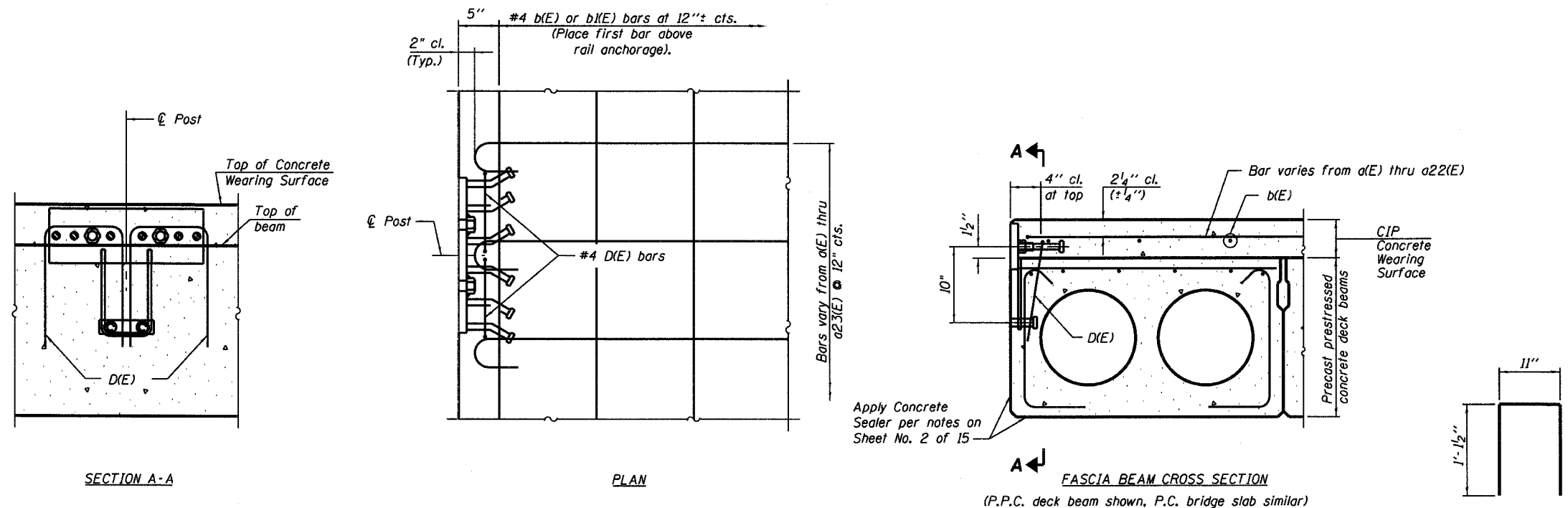
STATE OF ILLINOIS
DEPARTMENT OF TRANSPORTATION

ROUTE NO.	SECTION	COUNTY	LIST SHEETS	SHEET NO.	SHEET NO. 11
F.A.P. 869	10IBR-1	FRANKLIN		24	15 SHEETS
FED. ROAD DIST. NO. 7	ILLINOIS	FED. AID PROJECT			

Contract #78024



RAIL POST SPACING DETAIL



CONCRETE WEARING SURFACE, FASCIA DECK BEAM, AND P.C. BRIDGE SLAB MODIFICATIONS FOR RAIL ANCHORAGE

Notes:
See Sheet No. 12 of 15 for rail anchorage details.
The rail anchorage shall be cast with the deck beam/bridge slab and cast in the field with the wearing surface. Formwork necessary for the wearing surface may be secured utilizing the bottom rail anchorage inserts and/or additional inserts cast into the beam/bridge slab. Drilling into the beam, slab, or CWS will not be permitted.
Concrete wearing surface to be poured after grouting the shear keys.

D(E) BAR
(96 Required)



DESIGNED	RLM
CHECKED	MEL
DRAWN	AEC
CHECKED	RLM

RAIL POST SPACING AND CONNECTION DETAILS
ILL. ROUTE 34 OVER EWING CREEK
F.A.P. ROUTE 869 SECTION 10IBR-1
FRANKLIN COUNTY
STATION 362+35.00
STRUCTURE NO. 028-0047