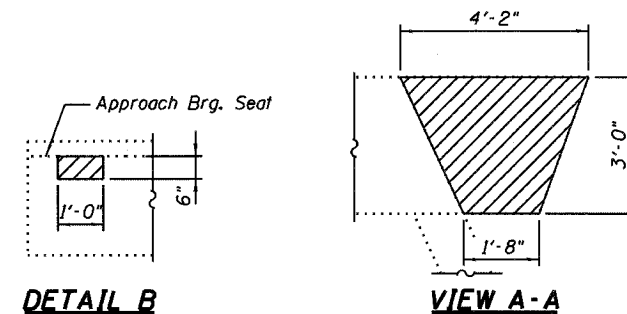
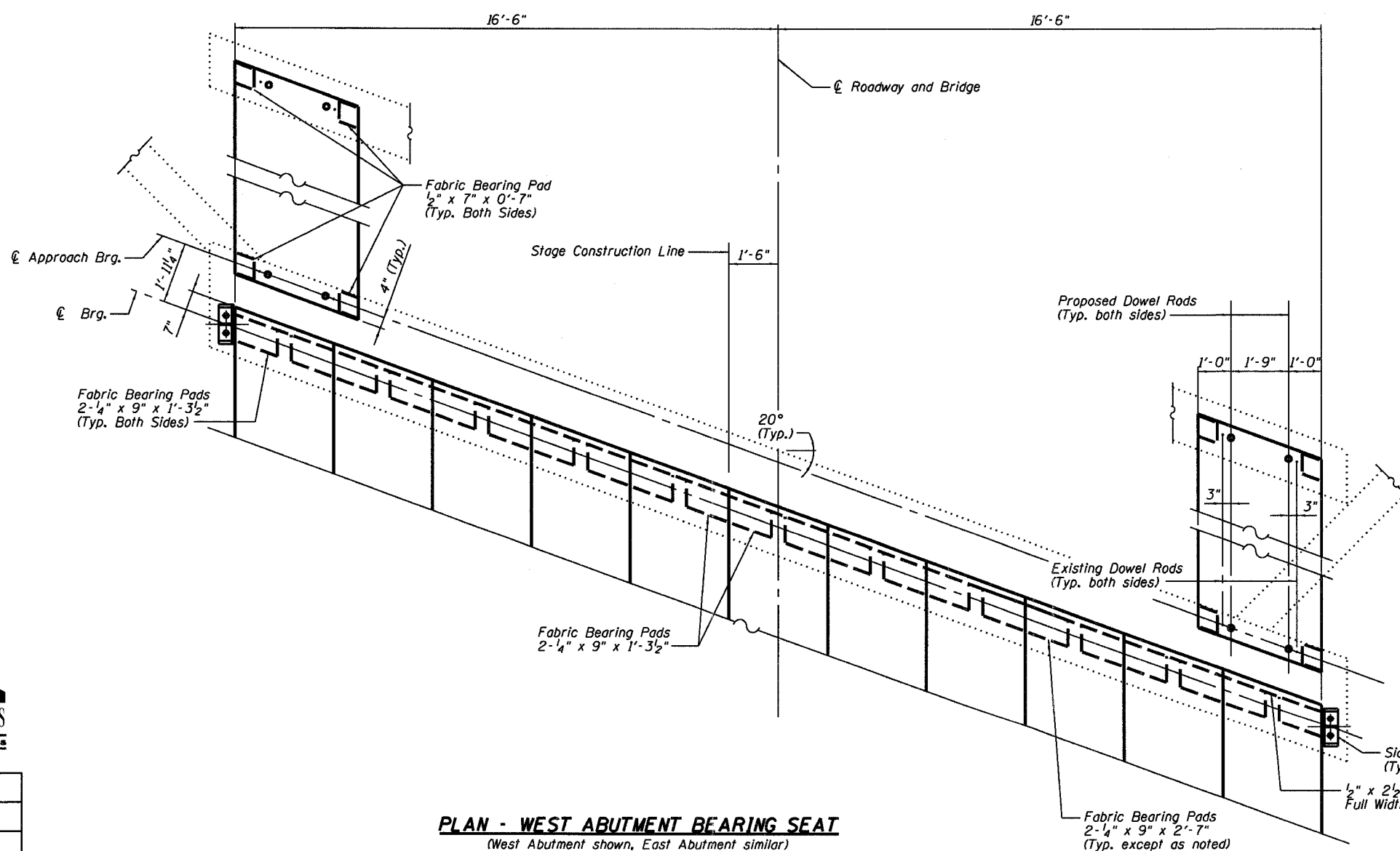
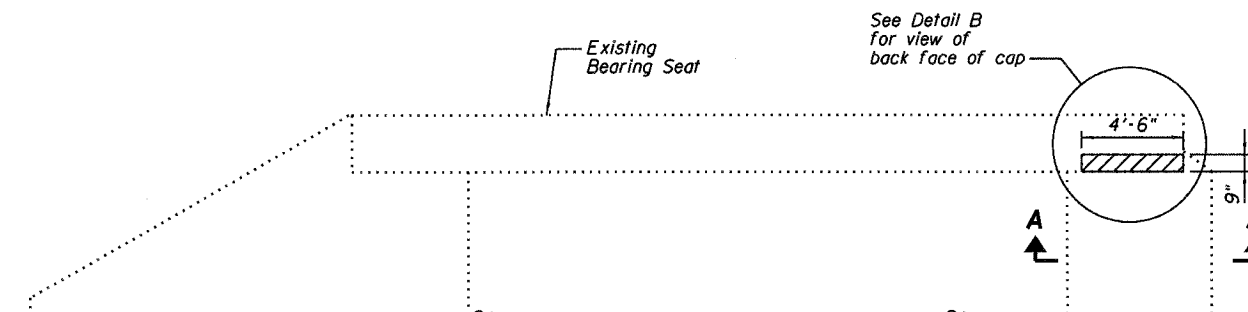
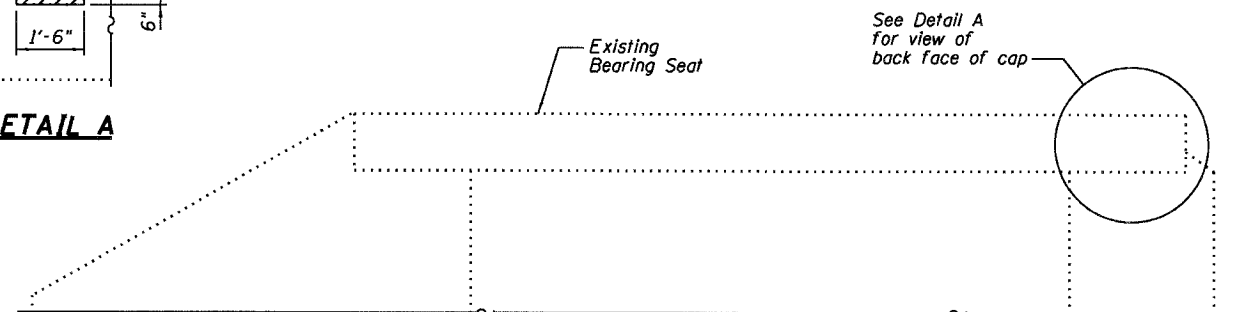
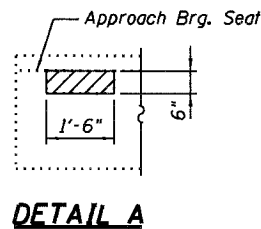


STATE OF ILLINOIS  
DEPARTMENT OF TRANSPORTATION

ROUTE NO.	SECTION	COUNTY	POST MILE	SHEET NO.
F.A.P. 869	10IBR-1	FRANKLIN	26	13
FED. ROAD DIST. NO. 7				ILLINOIS
FED. AID PROJECT				

Contract #78024

15 SHEETS



**LEGEND**

- Structural Repair of Concrete (Depth equal to or less than 5")
- Existing Dowel Rod
- Proposed Dowel Rod

Notes:  
Existing dowel rods shall be burned off flush with the existing concrete face, ground smooth, and sealed with epoxy. Cost is included with Removal of Existing Precast Concrete Units.  
Concrete sealer shall be applied to concrete repair areas.  
See Sheet No. 14 of 15 for Substructure Repair Bill of Material.

**ABUTMENT REPAIRS**  
**ILL. ROUTE 34 OVER EWING CREEK**  
**F.A.P. ROUTE 869 SECTION 10IBR-1**  
**FRANKLIN COUNTY**  
**STATION 362+35.00**  
**STRUCTURE NO. 028-0047**



DESIGNED	RLM
CHECKED	MEL
DRAWN	AEC
CHECKED	RLM

**PLAN - WEST ABUTMENT BEARING SEAT**  
(West Abutment shown, East Abutment similar)

Concrete structure, concrete wearing surface, and existing approach pavement not shown for clarity.