

F.A.U. RTE.	SECTION	COUNTY	TOTAL SHEETS	SHEET NO.
1362	06-00047-00-LS	COOK	59	1
FED. ROAD DIST. NO. 1 ILLINOIS FED. AID PROJECT				

STATE OF ILLINOIS  
DEPARTMENT OF TRANSPORTATION  
DIVISION OF HIGHWAYS

**PLANS FOR PROPOSED  
FEDERAL AID HIGHWAY**

**HARWOOD HEIGHTS**  
**F.A.U. 1362 (LAWRENCE AVENUE)**  
**Section No.: 06-00047-00-LS**  
**Project No.: CMM-M-TE-0001 (695)**  
**Harlem Ave. to Olcott Ave.**  
**ROADWAY RECONSTRUCTION**  
**COOK COUNTY**  
**JOB No.: C-91-005-07**

SHEET NO.	DESCRIPTION
1	COVER SHEET
2	GENERAL NOTES AND LIST OF HIGHWAY STANDARDS
3	ALIGNMENT, TIES AND BENCHMARKS
4	SUMMARY OF QUANTITIES
5	EARTHWORK AND TREE REMOVAL SCHEDULES
6	STRUCTURE SCHEDULE
7	PIPE SCHEDULE
8	TYPICAL SECTIONS
9-10	REMOVAL PLAN
11-14	ROADWAY PLAN AND PROFILE
15-18	DRAINAGE PLAN AND PROFILE
19	PAVEMENT MARKING AND SIGNING PLAN
20	LIGHTING GENERAL NOTES
21-24	LIGHTING PLAN
25-27	LIGHTING DETAILS
28-34	STREETScape AND LANDSCAPING PLAN
35-37	STREETScape DETAILS
38-39	STREETScape PLANTING PLAN
40	CONSTRUCTION DETAILS
41	WATER CONTROL STRUCTURE DETAIL
42	DETAIL OF STORM SEWER CONNECTION TO EXISTING SEWER
43	DETAILS FOR FRAMES AND LIDS ADJUSTMENT WITH MILLING
44	PAVEMENT PATCHING FOR HMA SURFACED PAVEMENT
45	BUTT JOINT AND HMA TAPER
46	TRAFFIC CONTROL AND PROTECTION FOR SIDE ROADS, INTERSECTIONS AND DRIVEWAYS
47	DISTRICT ONE TYPICAL PAVEMENT MARKINGS
48	PAVEMENT MARKING LETTERS AND SYMBOLS FOR TRAFFIC STAGING
49-59	CROSS-SECTIONS LAWRENCE AVENUE



**LIST OF STATE STANDARDS LOCATED ON SHEET NO. 2**

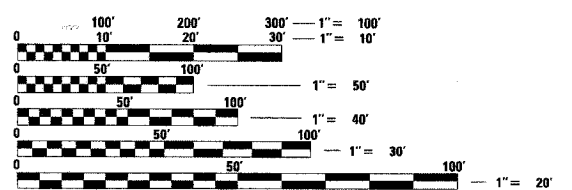
PROJECT LOCATED IN THE VILLAGE OF HARWOOD HEIGHTS

THE CONTRACTOR SHALL BE SOLELY RESPONSIBLE FOR JOB SITE SAFETY AS WELL AS SUPERVISION/DIRECTION AND MEANS/METHODS OF CONSTRUCTION.

CALL JULIE 1-800-892-0123 WITH THE FOLLOWING:

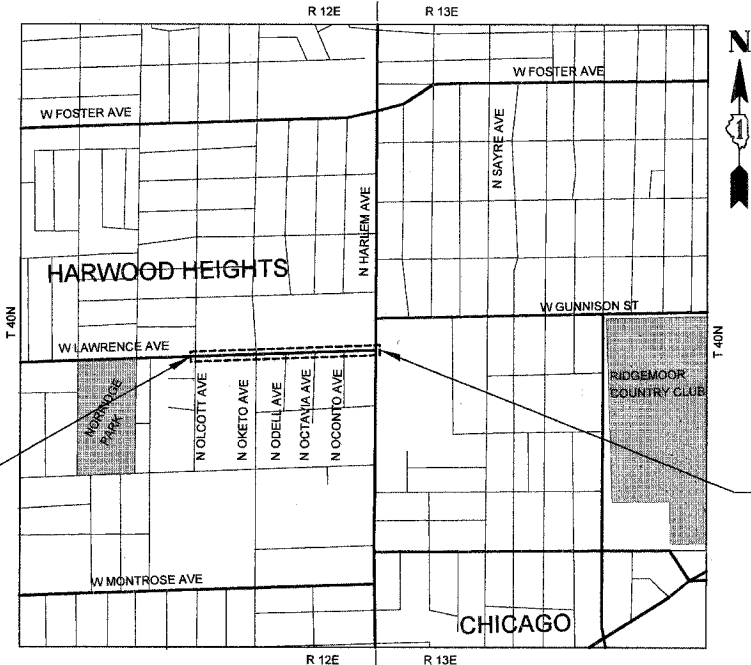
COUNTY COOK  
CITY-TOWNSHIP HARWOOD HEIGHTS  
SEC. & 1/4 SEC. NO. + S.E. 1/4 OF 12, T40N R12E  
N.E. 1/4 OF 13, T40N R12E

**48 HOURS BEFORE YOU DIG.**  
EXCLUDING SAT., SUN., & HOLIDAYS



FULL SIZE PLANS HAVE BEEN PREPARED USING STANDARD ENGINEERING SCALES. REDUCED SIZED PLANS WILL NOT CONFORM TO STANDARD SCALES. IN MAKING MEASUREMENTS ON REDUCED PLANS, THE ABOVE SCALES MAY BE USED.

**CONTRACT NO. 83905**



**DESIGN DESIGNATION: 1630 (08) ARTERIAL**

**TRAFFIC DATA**  
F.A.U. 1362 (LAWRENCE AVENUE) ADT = (2005) = 16,900

**POSTED SPEED LIMIT**  
F.A.U. 1362 (LAWRENCE AVENUE) = 35 MPH

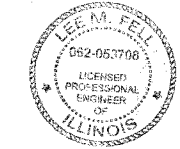
**DESIGN SPEED**  
F.A.U. 1362 (LAWRENCE AVENUE) = 35 MPH

BEGIN IMPROVEMENTS  
STA. 12 + 57.21

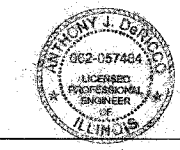
END IMPROVEMENTS  
STA. 31 + 01.54

**LOCATION MAP**  
GROSS LENGTH OF PROJECT = 0.35 MILES (1844 FEET)  
NET LENGTH OF PROJECT = 0.35 MILES (1844 FEET)

ASSOCIATE FIELD ENGINEER: JESSICA FELICIANO  
201 W. CENTER COURT  
SCHALMUR, ILLINOIS 60196-1096  
(847) 705-4487



LEE M. FELL P.E.  
ENGINEER  
DATE: 10-27-07  
ILLINOIS REGISTRATION No. 062-053708  
EXPIRATION DATE: 11/2009



ANTHONY J. DERICCO P.E.  
ENGINEER  
DATE: 10-29-07  
ILLINOIS REGISTRATION No. 062-057484  
EXPIRATION DATE: 11/2009

STATE OF ILLINOIS  
DEPARTMENT OF TRANSPORTATION  
DIVISION OF HIGHWAYS

APPROVED October 25 2007  
VILLAGE OF HARWOOD HEIGHTS Margaret Walker  
MAYOR

PASSED November 6 2007  
DISTRICT 1 ENGINEER OF LOCAL ROADS AND STREETS

RELEASING FOR BID  
BASED ON LIMITED  
REVIEW Nov 7 2007  
DEPUTY DIRECTOR OF HIGHWAYS, REGION 1 ENGINEER

**CHRISTOPHER B. BURKE ENGINEERING, LTD.**  
9575 W. Higgins Road, Suite 600  
Rosemont, Illinois 60018  
(847) 823-0500

PROFESSIONAL DESIGN FIRM NO. 184-001175  
EXPIRATION DATE: 04/30/09