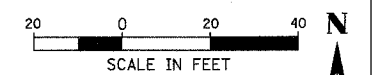
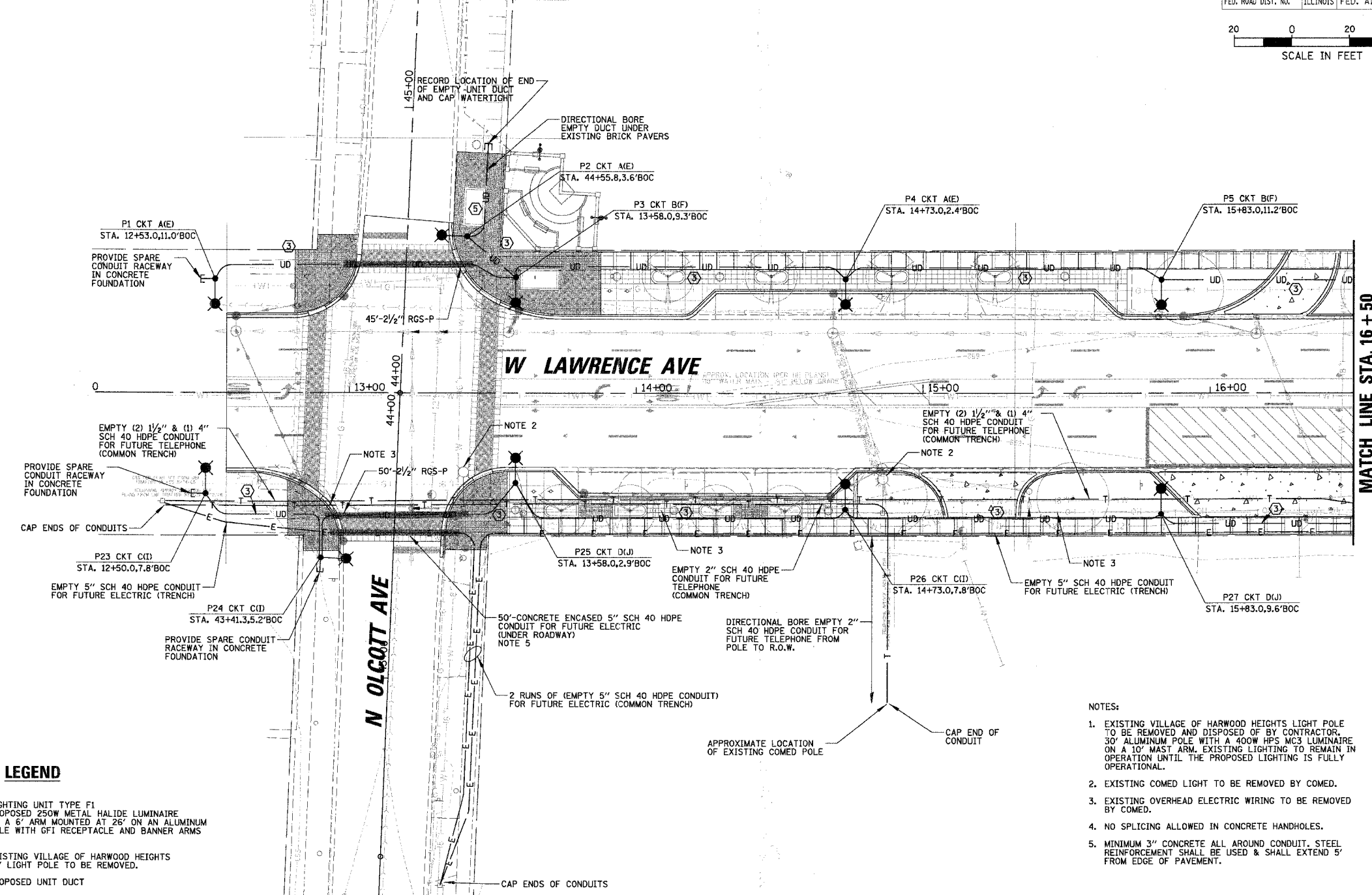


CONTRACT NO. 83905			
F.A. RTE.	SECTION	COUNTY	TOTAL SHEETS
1362	06-00047-00-LS	COOK	59
STA. 12+50	TO STA. 16+50		21
FED. ROAD DIST. NO.	ILLINOIS FED. AID PROJECT		



MATCH LINE THIS SHEET



MATCH LINE STA. 16 + 50

CONDUIT LEGEND

- ① EMPTY 1" SCH 40 UNIT DUCT
- ② 1" SCH 40 UNIT DUCT WITH 1/C #10, 1/C #10 NEUTRAL, & 1/C #10 GROUND
- ③ 1/2" SCH 40 UNIT DUCT WITH 4/C #6 FOR STREET LIGHTS; 2/C #6 & 1/C #6 NEUTRAL FOR POLE RECEPTACLES; & 1/C #6 GROUND
- ④ 1/2" SCH 40 UNIT DUCT WITH 4/C #6 FOR STREET LIGHTS; 2/C #6 & 1/C #6 NEUTRAL FOR POLE RECEPTACLES; 1/C #6 & 1/C #6 NEUTRAL FOR FUTURE SHELTER/SIGN; & 1/C #6 GROUND
- ⑤ EMPTY 1/2" SCH 40 UNIT DUCT

LEGEND

- LIGHTING UNIT TYPE F1 PROPOSED 250W METAL HALIDE LUMINAIRE ON A 6' ARM MOUNTED AT 26' ON AN ALUMINUM POLE WITH GFI RECEPTACLE AND BANNER ARMS
- EXISTING VILLAGE OF HARWOOD HEIGHTS 30' LIGHT POLE TO BE REMOVED.
- PROPOSED UNIT DUCT
- PROPOSED RGS CONDUIT SLEEVE FOR UNIT DUCT UNDER PAVEMENT
- PROPOSED ELECTRICAL CONDUIT
- PROPOSED CONCRETE ENCASED PVC CONDUIT
- PROPOSED LIGHTING CONTROLLER
- PROPOSED COMPOSITE CONCRETE HANDHOLE
- EXISTING COM ED LIGHT
- POLE NUMBER
- CIRCUIT IDENTIFIER
- SETBACK (FROM BACK OF CURB TO FACE OF CONCRETE FOUNDATION, TYP.)
- STATION
- RIGID GALVANIZED STEEL CONDUIT TRENCHED OR PUSHED

NOTES:

1. EXISTING VILLAGE OF HARWOOD HEIGHTS LIGHT POLE TO BE REMOVED AND DISPOSED OF BY CONTRACTOR. 30' ALUMINUM POLE WITH A 400W HPS MC3 LUMINAIRE ON A 10' MAST ARM, EXISTING LIGHTING TO REMAIN IN OPERATION UNTIL THE PROPOSED LIGHTING IS FULLY OPERATIONAL.
2. EXISTING COMED LIGHT TO BE REMOVED BY COMED.
3. EXISTING OVERHEAD ELECTRIC WIRING TO BE REMOVED BY COMED.
4. NO SPLICING ALLOWED IN CONCRETE HANDHOLES.
5. MINIMUM 3" CONCRETE ALL AROUND CONDUIT. STEEL REINFORCEMENT SHALL BE USED & SHALL EXTEND 5' FROM EDGE OF PAVEMENT.

CAUTION
NOTICE TO CONTRACTOR

THE CONTRACTOR IS SPECIFICALLY CAUTIONED THE LOCATION AND/OR ELEVATION OF EXISTING AND PROPOSED UTILITIES AS SHOWN ON THESE PLANS. THE INFORMATION IS NOT TO BE RELIED ON AS BEING EXACT OR COMPLETE. THE CONTRACTOR MUST CALL THE LOCAL UTILITY LOCATION CENTER AT LEAST 72 HOURS BEFORE ANY EXCAVATION TO REQUEST EXACT FIELD LOCATIONS OF THE UTILITIES. IT SHALL BE THE RESPONSIBILITY OF THE CONTRACTOR TO INFORM ENGINEER OF ANY EXISTING UTILITIES WHICH CONFLICT WITH THE PROPOSED IMPROVEMENTS.

REVISIONS	
NAME	DATE

ILLINOIS DEPARTMENT OF TRANSPORTATION

LIGHTING PLAN
LAWRENCE AVENUE
STA. 12 + 50 TO STA. 16 + 50

SCALE: VERT. _____
HORIZ. 20'
DATE 10/29/2007

DRAWN BY AJD
CHECKED BY JPC

PLOT DATE = 10/29/2007
 FILE NAME = N:\HARWOODHEIGHTS\062791\Draw\062791.dwg
 USER = PMSHELL
 PLOTTER = HPGL