

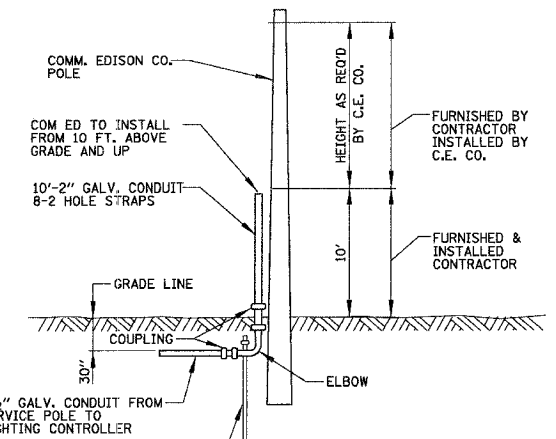
ITEM	SPECIFICATION	MANUFACTURER/MODEL NO. OR EQUAL
1 MAIN CIRCUIT BREAKER	200 AMPERE, 2P, 240 V RATING, 22K AIC	SIEMENS NO. FD62B200
2 LAMPHOLDER CIRCUIT BREAKER	20 AMPERE, 1P, 120 V RATING, 22K AIC	SIEMENS NO. ED41B020
3 PHOTOELECTRIC CONTROL CIRCUIT BREAKER	15 AMPERE, 1P, 120 V RATING, 22K AIC	SIEMENS NO. ED41B015
4 AUXILIARY RELAY	120 V OPERATED SPST 60 HZ COIL 600V NORMALLY OPEN CONTACTS	MAGNECRAFT NO. W389ACX-9
5 CABINET RECEPTACLE AND BOX	COMMERCIAL GRADE GFCI 20A/120V, MOUNTED IN A WEATHERPROOF CAST ALUMINUM SINGLE GANG BOX WITH WEATHERPROOF COVER	RECEPTACLE: LEVITON NO. 8899, BOX: APPLETON NO. WSM150 COVER: APPLETON NO. WH61
6 CABINET LIGHT AND BOX	120V WEATHERPROOF LAMPHOLDER MOUNTED IN A CAST ALUMINUM BOX & EXT. GRADE 100W LAMP	LIGHT & BOX: RAB NO. VX100DG
7 CONTACTOR	200 AMPERE, 2 POLE, 120 V COIL, MECH HELD	SQUARE D NO. 8903 SVO 10 V02
8 BRANCH LINE CIRCUIT BREAKERS	9- 30 AMPERE, 2 P, 240 V RATING, 22K AIC	SIEMENS NO. ED42B030
9 POWER DISTRIBUTION BLOCK	600 VOLT, INSULATED, SIZE AS REQUIRED	MARATHON
10 SERVICE CABLES	3-600V (XLP-TYPE USE) NO. 3/0	N/A
11 LAMPHOLDER WIRE	2-600V XLP NO. 12	N/A
12 CONTROL WIRE	2-600V XLP NO. 12	N/A
13 SURGE ARRESTOR	10 K AMPERE RATING	SQUARE D NO. SDSA 1175
14 PHOTOELECTRIC CONTROL WIRE	3-600V XLP NO. 12	3-600V XLP NO. 12
15 DOOR SWITCH	20A/120V, DOOR MOUNTED SNAP ACTION TYPE PLUNGER SWITCH	OMRON NO. A-20GQ-K
16 HAND-AUTO-OFF CONTROL SWITCH	20 A, 3 POS. MTD IN CAST ALUM. ENCLOSURE	SQUARE D NO. 9001 KYK 111
17 PHOTOCELL	120V, MTD. ON CABINET, DELAY TYPE, SPST-NC	FISHER PIERCE NO. FPFA-105
18 BREAKERS FOR FUTURE SIGNS AND BUS SHELTER	4- 20 AMPERE, 1 P, 120 V RATING, 22K AIC	SIEMENS NO. ED41B020

NOTES:

- ALL ITEMS LISTED IN LIGHTING CONTROLLER COMPONENT SCHEDULE SHALL BE CONSIDERED INCIDENTAL TO THE PRICE BID FOR "STREET LIGHTING CONTROLLER" INCLUDING CABINET AND FOUNDATION.
- THE LIGHTING CONTROLLER TOGETHER WITH ALL OF ITS COMPONENTS SHALL BE UL LISTED AS AN "ENCLOSED INDUSTRIAL CONTROL PANEL" UNDER UL508A.
- LIGHTING & RECEPTACLE CIRCUITS A THRU L OPERATE FROM DUSK TO DAWN, CIRCUITS M, N & O FOR FUTURE SIGNS AND BUS STOP SHELTERS ARE ALWAYS ON.

**LIGHTING CONTROLLER COMPONENT SCHEDULE**

CIRCUIT ID	250W LUMINAIRE		POLE MOUNTED RECEPTACLE		FUTURE SIGN/BUS SHELTER	TOTAL CIRCUIT LOAD (WATTS)
	QUANTITY	LOAD/POLE (WATTS)	QUANTITY	LOAD/POLE (WATTS)		
A	11	291W	-	180W	-	3201 W
B	11	291W	-	180W	-	3201 W
C	11	291W	-	180W	-	3201 W
D	12	291W	-	180W	-	3492 W
E	-	291W	5	180W	-	900 W
F	-	291W	4	180W	-	720 W
G	-	291W	7	180W	-	1260 W
H	-	291W	6	180W	-	1080 W
I	-	291W	5	180W	-	900 W
J	-	291W	4	180W	-	720 W
K	-	291W	6	180W	-	1080 W
L	-	291W	8	180W	-	1440 W
M	-	291W	-	180W	340 W	340 W
N	-	291W	-	180W	340 W	340 W
O	-	291W	-	180W	860 W	860 W
TOTAL	45	N/A	45	N/A	N/A	22.7 KW

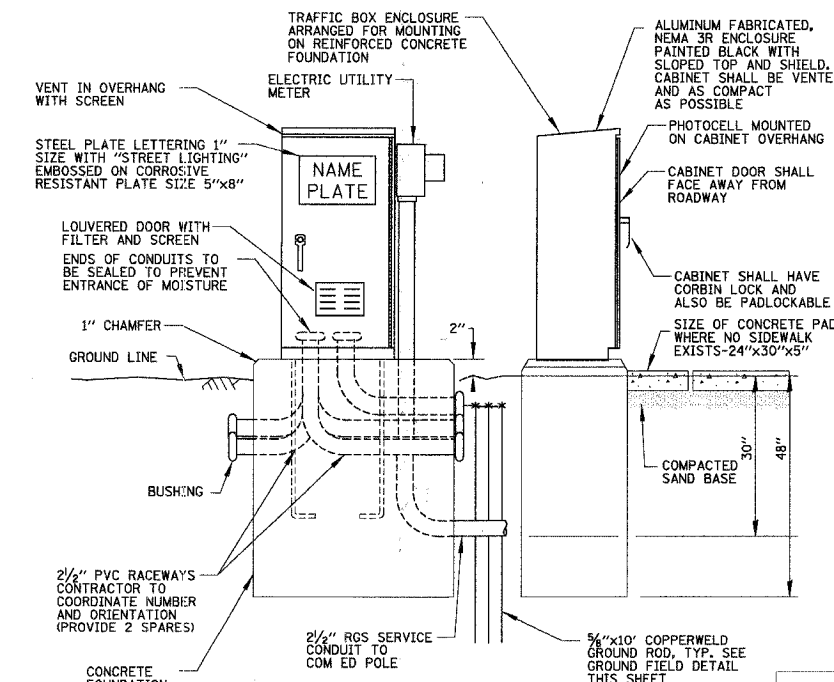


- NOTES:
- SEE COM ED BOOK OF INFORMATION AND REQUIREMENTS FOR THE SUPPLY OF ELECTRIC SERVICE
  - ALL MATERIAL ABOVE EXCEPT FOR POLE SHALL BE INCLUDED IN THE PRICE BID FOR "ELECTRIC SERVICE INSTALLATION" INCLUDING ANY UTILITY CONNECTION FEES.

**COM ED OVERHEAD CONNECTION POLE**

N.T.S.

**LIGHTING CONTROLLER CIRCUIT WATTAGE LOADS**



NOTE: ALL ITEMS SHOWN ABOVE INCLUDING FOUNDATION SHALL BE INCLUDED IN THE PRICE BID FOR "STREET LIGHTING CONTROLLER", EXCEPT FOR THE SERVICE CONDUIT WHICH WILL BE PAID FOR SEPARATELY.

**PROPOSED LIGHTING CONTROLLER CABINET AND FOUNDATION**

N.T.S.

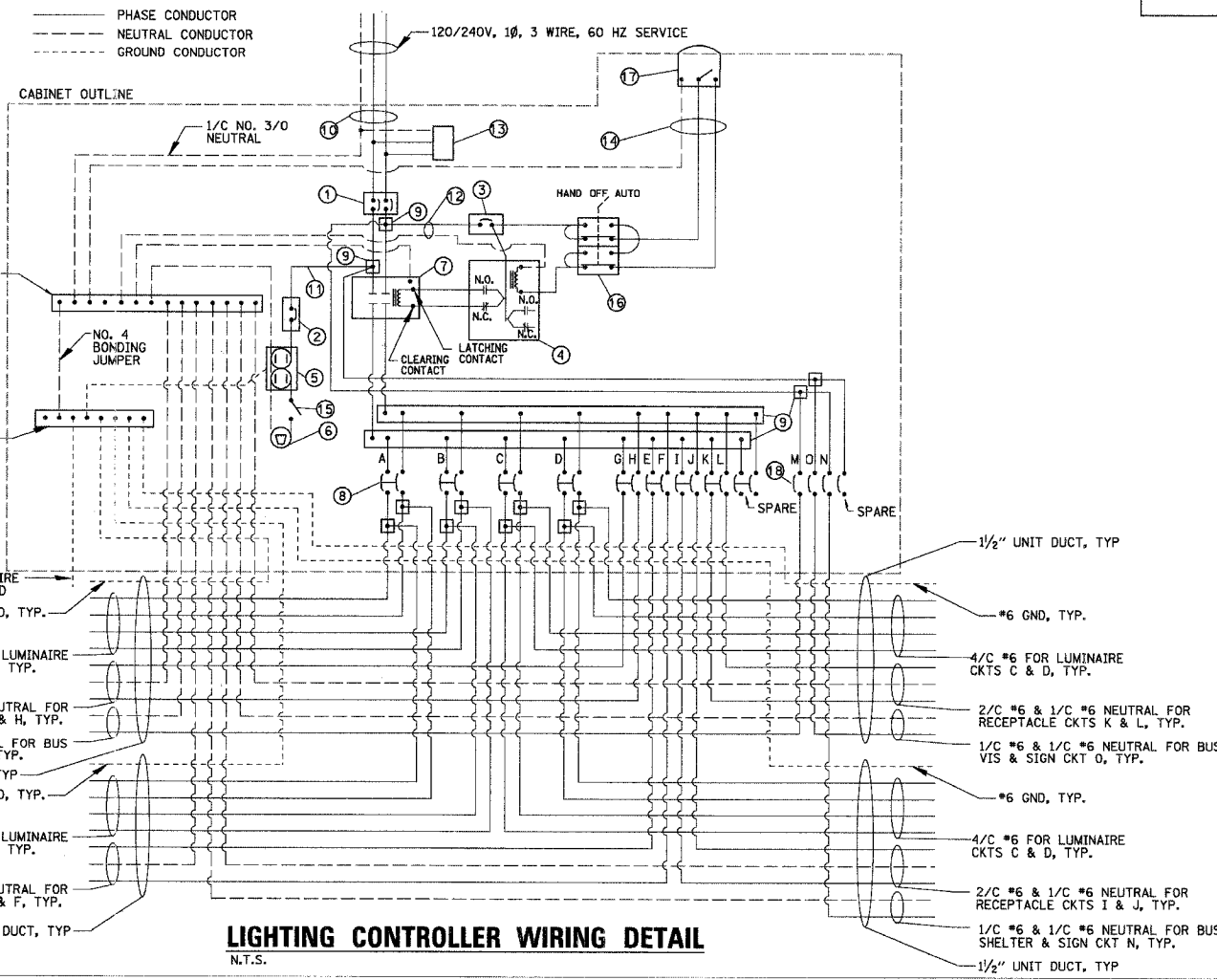
REVISIONS	NAME	DATE

ILLINOIS DEPARTMENT OF TRANSPORTATION

**LIGHTING DETAILS - 1 LAWRENCE AVENUE**

SCALE: VERT. N.T.S. HORIZ. N.T.S.  
 DATE: 10/29/2007  
 DRAWN BY: AJD  
 CHECKED BY: JPC

PLT DATE = 10/29/2007  
 FILE NAME = I:\N\980000\ED\PH\136279\Main\136279LghtDet.dwg  
 USER NAME = PMAKRELLI



**LIGHTING CONTROLLER WIRING DETAIL**

N.T.S.