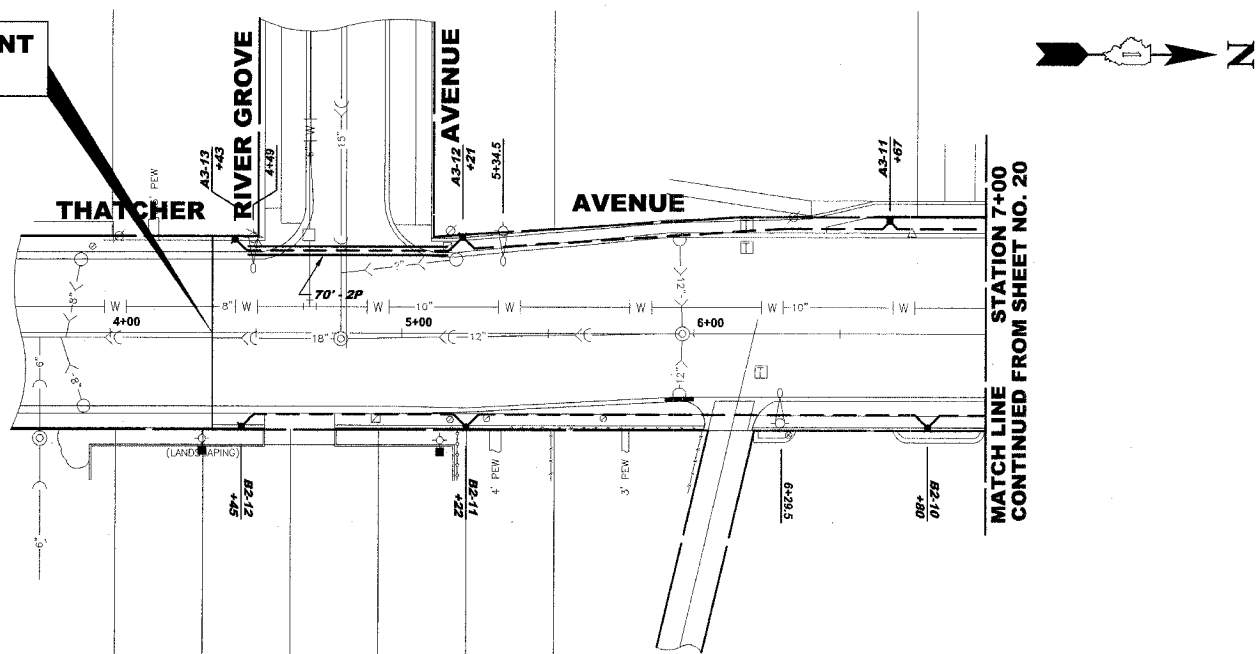


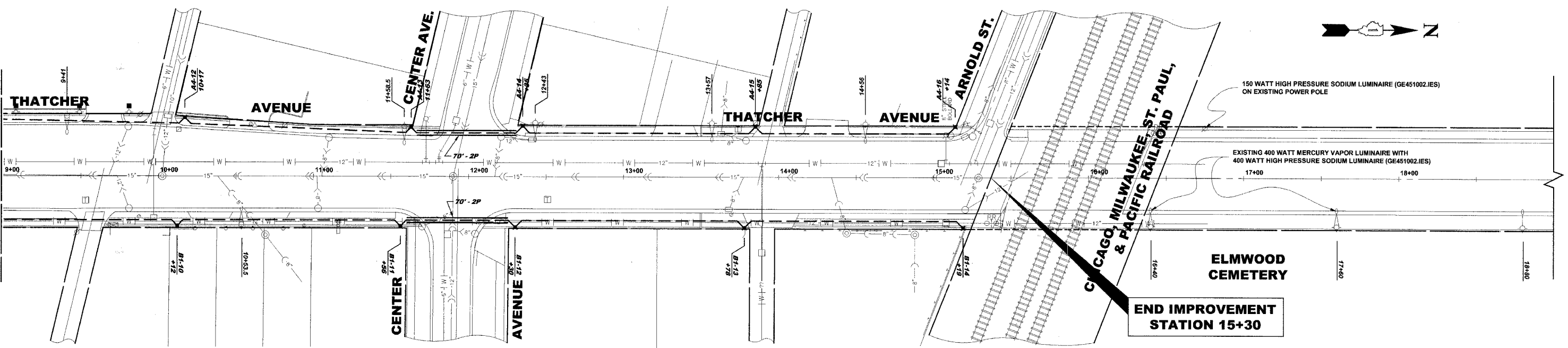
**BEGIN IMPROVEMENT  
STATION 4+35**



**MATCH LINE  
STATION 7+00  
CONTINUED FROM SHEET NO. 20**

LEGEND OF SYMBOLS	
	PROPOSED DECORATIVE LIGHT POLE, ALUMINUM, 12' MOUNTING HEIGHT WITH DECORATIVE ACORN STYLE LUMINAIRE, SODIUM VAPOR, TENON MOUNT, 70 WATT
	EXISTING 35' MOUNTING HEIGHT POLE WITH 8' MAST ARM AND 400 WATT HIGH PRESSURE SODIUM LAMP (GE451002.IES)
	EXISTING 35' MOUNTING HEIGHT POLE WITH 8' MAST ARM AND 400 WATT MERCURY VAPOR LAMP
	PROPOSED CONTROL CENTER
	PROPOSED UNIT DUCT WITH 2-1/2" No. 6 & 1-1/2" No. 8 GROUND, 600V (KLP-TYPE USE), 1" DIAMETER OR AS NOTED, BORED & PULLED OR AS NOTED
	PROPOSED RIGID GALVANIZED STEEL CONDUIT IN TRENCH OR PUSHED AS NOTED
	CONTROLLER IDENTIFICATION (TYP.)
	CIRCUIT NUMBER (TYP.)
	POLE NUMBER (TYP.)
	STATION NUMBER (TYP.)

**CONTINUED FROM SHEET 20  
MATCH LINE  
STATION 11+00**



**END IMPROVEMENT  
STATION 15+30**



◆ Civil Engineers  
◆ Municipal Consultants  
◆ Established 1911

9933 Roosevelt Road  
Westchester, Illinois 60154-2780  
Phone: 708/865-0300  
Fax: 708/865-1212

**GRAND AVENUE STREETScape PROJECT  
VILLAGE OF RIVER GROVE, ILLINOIS**

**THATCHER AVENUE  
LIGHTING PLAN**

SCALE:	1"=30'	SHEET	21
DRAWN BY:	LEV/ECW/MK	OF	35
BOOK NO.:	1441,1443,1516		
DATE:	10-15-07		
REVISION:			
E.H.E. NO.:	760-06-03320		

Drawing file: W:\Projects\76060332 - Grand Ave Streetscape\GRAND-THATCHER\GRAND-THATCHER.dwg Oct 16, 2007 - 2:39pm