

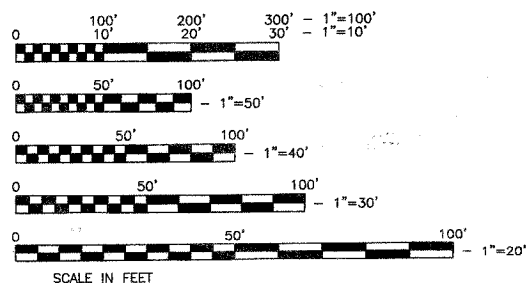
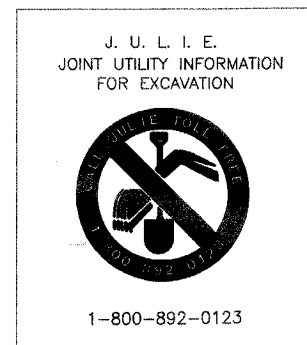
ASSOCIATE FIELD ENGINEER: KEVIN STALLWORTH (847) 705-4169

STATE OF ILLINOIS
DEPARTMENT OF TRANSPORTATION
DIVISION OF HIGHWAYS
PLANS FOR PROPOSED
FEDERAL AID HIGHWAY
F.A.U. ROUTE 1476 (39TH STREET)
MAIN STREET (FAU 2615) TO FAIRVIEW AVENUE (FAU 2637)
ROADWAY RESURFACING (LAPP)
SECTION: 07-00096-00-RS
PROJECT: M-8003(817)
JOB: C-91-308-07
VILLAGE OF DOWNERS GROVE
DU PAGE COUNTY

F. A. U. NO.	SECTION	COUNTY	TOTAL SHEETS	SHEET NO.
1476-07-00096-00-RS	DU PAGE	ILLINOIS	14	1
FED. ROAD DIST. NO. 1				
CONTRACT NO. 83935				

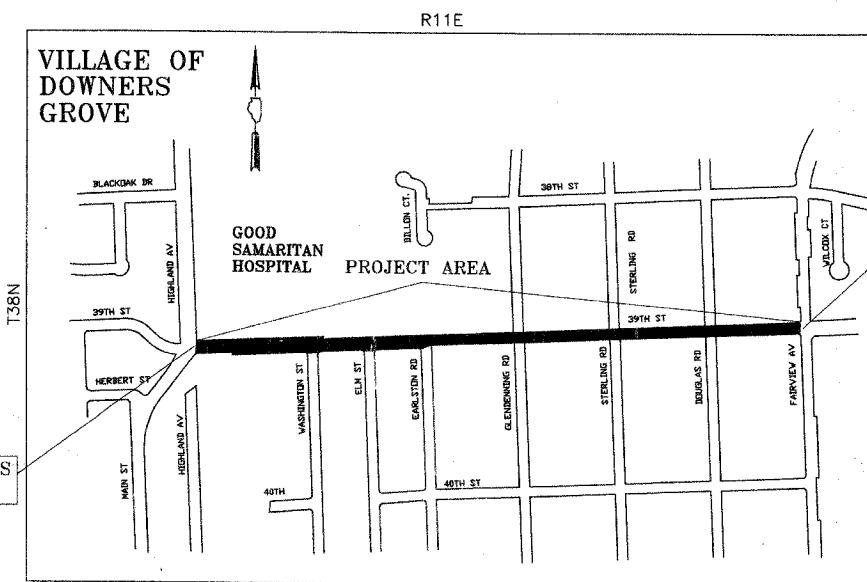
INDEX OF SHEETS

SHEET NO.	DESCRIPTION
1	COVER SHEET & LOCATION MAP
2	SUMMARY OF QUANTITIES
3	GENERAL NOTES & IDOT STANDARDS
4	TYPICAL SECTIONS
5	PLAN SHEET (STA. 68+84 TO STA. 72+50)
6	PLAN SHEET (STA. 72+50 TO STA. 84+50)
7	PLAN SHEET (STA. 84+50 TO STA. 96+50)
8	PLAN SHEET (STA. 96+50 TO STA. 99+39)
9	PAVEMENT MARKINGS (STA. 68+84 TO STA. 72+50)
10	PAVEMENT MARKINGS (STA. 72+50 TO STA. 84+50)
11	PAVEMENT MARKINGS (STA. 84+50 TO STA. 96+50)
12	PAVEMENT MARKINGS (STA. 96+50 TO STA. 99+39)
13	CONSTRUCTION DETAILS
14	IDOT DISTRICT ONE TYPICAL PAVEMENT MARKING DETAIL



FULL SIZE PLANS HAVE BEEN PREPARED USING STANDARD ENGINEERING SCALES. REDUCED SIZE PLANS WILL NOT CONFORM TO STANDARD SCALES. IN MAKING MEASUREMENTS ON REDUCED PLANS, THE ABOVE SCALES CAN BE USED

Contract No. 83935



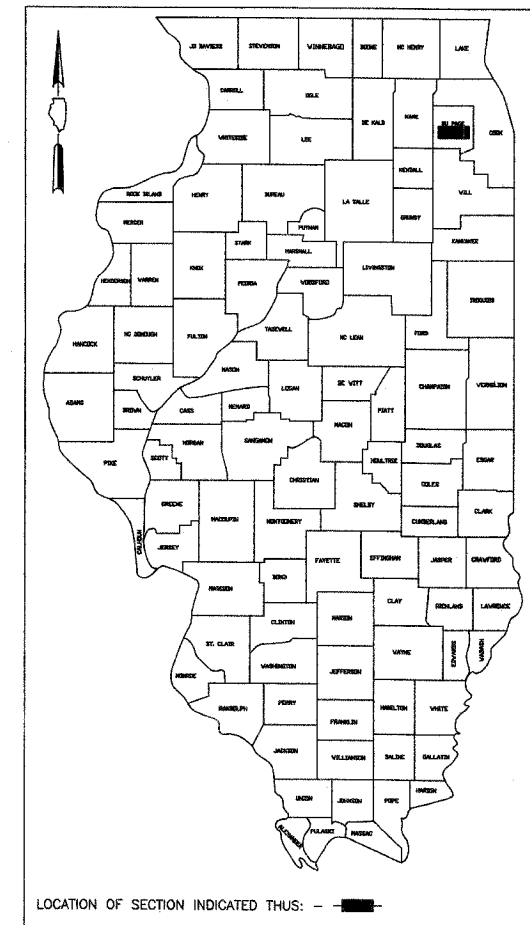
(NOT TO SCALE)

LOCATION MAP

LENGTH OF PROJECT=3,055 FT. (0.579 MILE)

END IMPROVEMENTS
STA. 99+39

39th STREET DESIGN DESIGNATION
MINOR ARTERIAL
DESIGN SPEED: 35 MPH
ADT: 7,500



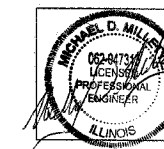
LOCATION OF SECTION INDICATED THIS: — ■ —

STATE OF ILLINOIS
DEPARTMENT OF TRANSPORTATION
DIVISION OF HIGHWAYS

APPROVED November 2, 2007
Michael D. Millette
DIRECTOR OF PUBLIC WORKS, VILLAGE OF DOWNERS GROVE

PASSED November 6, 2007
Christophe Holt
DIVISION ENGINEER OF LOCAL ROADS AND STREETS

RELEASING FOR
BID BASED ON
LIMITED REVIEW Nov. 6, 2007
Diane O'Keefe
DEPUTY DIRECTOR OF HIGHWAYS
REGION ONE ENGINEER



Michael D. Millette, P.E.
#062-047313
My License Expires 11/30/07
As an official act as Assistant Director of Public Works,
I hereby seal these plans.

SUMMARY OF QUANTITIES

F. A. D. NO.	SECTION	COUNTY	TOTAL SHEETS	SHEET NO.
1476	07-00096-00-RS	DU PAGE	14	2
FED. ROAD DIST. NO. 1		ILLINOIS	FED. AID PROJECT	
CONTRACT NO. 83935				

39th STREET					CONSTRUCTION TYPE CODE	
ITEM NO.	PAY ITEM	UNIT	TOTAL BID QUANTITY	1000-2A		
21101615	TOPSOIL FURNISH AND PLACE, 4"	SQ. YD.	1816	1816		
25000400	NITROGEN FERTILIZER NUTRIENT	POUND	23	23		
25000500	PHOSPHOROUS FERTILIZER NUTRIENT	POUND	23	23		
25000600	POTASSIUM FERTILIZER NUTRIENT	POUND	23	23		
25200110	SODDING, SALT TOLERANT	SQ. YD.	1816	1816		
25200200	SUPPLEMENTAL WATERING	UNIT	15	15		
40600100	BITUMINOUS MATERIALS (PRIME COAT)	GAL.	945	945		
40600300	AGGREGATE (PRIME COAT)	TON	19	19		
40600825	POLYMERIZED LEVELING BINDER (MACHINE METHOD), N50,	TON	408	408		
40600982	HOT-MIX ASPHALT SURFACE REMOVAL - BUTT JOINT	SQ. YD.	730	730		
40603335	HOT-MIX ASPHALT SURFACE COURSE, MIX "D", N50	TON	1843	1843		
42001300	PROTECTIVE COAT	SQ. YD.	36	36		
44000158	HOT-MIX ASPHALT SURFACE REMOVAL, 2 1/4"	SQ. YD.	9452	9452		
^ 44001700	COMBINATION CONCRETE CURB AND GUTTER REMOVAL AND REPLACEMENT	FOOT	175	175		
44201713	CLASS D PATCHES, TYPE I, 6 INCH	SQ. YD.	240	240		
44201717	CLASS D PATCHES, TYPE II, 6 INCH	SQ. YD.	240	240		
44201721	CLASS D PATCHES, TYPE III, 6 INCH	SQ. YD.	240	240		
44201723	CLASS D PATCHES, TYPE IV, 6 INCH	SQ. YD.	225	225		
44300100	AREA REFLECTIVE CRACK CONTROL TREATMENT	SQ. YD.	9452	9452		
48101200	AGGREGATE SHOULDERS, TYPE B	TON	250	250		
^ 67100100	MOBILIZATION	L. SUM	1	1		
70101800	TRAFFIC CONTROL AND PROTECTION (SPECIAL)	L. SUM	1	1		
70300100	SHORT - TERM PAVEMENT MARKING	FOOT	6200	6200		
* 78000100	THERMOPLASTIC PAVEMENT MARKING-LETTERS AND SYMBOLS	SQ.FT.	21	21		
* 78000200	THERMOPLASTIC PAVEMENT MARKING-LINE 4"	FOOT	6119	6119		
* 78000400	THERMOPLASTIC PAVEMENT MARKING-LINE 6"	FOOT	126	126		
* 78000600	THERMOPLASTIC PAVEMENT MARKING-LINE 12"	FOOT	48	48		
* 78000650	THERMOPLASTIC PAVEMENT MARKING-LINE 24"	FOOT	25	25		
* 88600600	DETECTOR LOOP REPLACEMENT	FOOT	68	68		
^ XX003435	PORTLAND CONCRETE CEMENT DRIVEWAY REMOVAL AND REPLACEMENT	SQ. YD.	7	7		
^ Z0018400	DRAINAGE STRUCTURES TO BE ADJUSTED	EACH	4	4		
^ XX007171	AGGREGATE SHOULDER REMOVAL	CU. YD.	1210	1210		
^ XX006947	HOT-MIX ASPHALT DRIVEWAY REMOVAL AND REPLACEMENT	SQ. YD.	203	203		

* DENOTES SPECIALTY ITEM
 ^ DENOTES SPECIAL PROVISION

VILLAGE OF DOWNERS GROVE
 PUBLIC WORKS ENGINEERING DIVISION
 5101 WALNUT AVENUE 60515 (630)434-5460

REVISIONS		39th STREET RESURFACING PROJECT SUMMARY OF QUANTITIES	
NAME	DATE		
		DATE: 1/12/07	CHECKED BY: S.A.V.
		SCALE: N.T.S.	DRAWN BY: R.W.B.
FILE NAME: C:\CADFILES\39th St\SUNOFQUANT			

GENERAL NOTES

F.A.U. NO.	SECTION	COUNTY	TOTAL SHEETS	SHEET NO.
1476	07-00096-00-RS	DU PAGE	14	3
FED. ROAD DIST. NO. 1		ILLINOIS	FED. AID PROJECT	

CONTRACT NO. 83935

IDOT STANDARDS

000001-05	STANDARD SYMBOLS, ABBREVIATIONS, AND PATTERNS
280001-04	TEMPORARY EROSION CONTROL SYSTEM
442201-03	CLASS C & D PATCHES
424001-05	CURB RAMPS FOR SIDEWALK
482011-03	HMA SHOULDER STRIPS/SHOULDERS WITH RESURFACING OR WIDENING AND RESURFACING PROJECTS
606001-03	CONCRETE CURB TYPE B & COMBINATION CONCRETE CURB AND GUTTER
701311-02	LANE CLOSURE, 2L, 2W MOVING OPERATIONS - DAY ONLY
701501-04	URBAN LANE CLOSURE, 2L, 2W, UNDIVIDED
701701-05	URBAN LANE CLOSURE, MULTILANE INTERSECTION
701801-03	LANE CLOSURE MULTILANE 1W OR 2W CROSSWALK OR SIDEWALK CLOSURE
701901	TRAFFIC CONTROL DEVICES
780001-01	TYPICAL PAVEMENT MARKINGS
886001	DETECTOR LOOP INSTALLATIONS
886006	TYPICAL LAYOUTS FOR DETECTION LOOPS

1. ALL REFERENCES TO THE "VILLAGE" IN THESE GENERAL NOTES SHALL BE INTERPRETED TO MEAN THE VILLAGE OF DOWNERS GROVE.
2. ALL REFERENCES TO THE "STANDARD SPECIFICATIONS" IN THESE GENERAL NOTES SHALL BE INTERPRETED TO MEAN THE "STANDARD SPECIFICATIONS FOR ROAD AND BRIDGE CONSTRUCTION," ADOPTED BY THE ILLINOIS DEPARTMENT OF TRANSPORTATION (I.D.O.T.) ON JANUARY 1, 2007.
3. THE LOCATIONS OF PUBLIC OR PRIVATE UTILITIES SHOWN ON THE PLANS ARE APPROXIMATE AND THE VILLAGE AND THE ENGINEERS DO NOT GUARANTEE THEIR ACCURACY. THE CONTRACTOR WILL BE REQUIRED TO ASCERTAIN THE EXACT LOCATION OF SUCH UTILITIES AND EXERCISE CARE DURING THE CONSTRUCTION OPERATION SO AS NOT TO DAMAGE THEM, IN ACCORDANCE WITH THE SPECIAL PROVISIONS AND ARTICLE 107.20 OF THE "STANDARD SPECIFICATIONS." THE CONTRACTOR SHALL BE RESPONSIBLE FOR CONTACTING THE OWNERS OF ALL EXISTING UTILITIES SO THAT THEIR FACILITIES MAY BE LOCATED AND ADJUSTED OR MOVED, IF NECESSARY, PRIOR TO THE START OF THE CONSTRUCTION OPERATIONS. THE CONTRACTOR SHALL COOPERATE WITH ALL UTILITY OWNERS AS PROVIDED FOR IN THE "STANDARD SPECIFICATIONS."
4. THOSE EXISTING TRAFFIC SIGNS WHICH ARE SO DESIGNATED BY THE ENGINEER SHALL BE REMOVED, STORED AND SUBSEQUENTLY RELOCATED BY THE CONTRACTOR AT NO ADDITIONAL COST TO THE VILLAGE. IN ADDITION, ANY SIGNS WHICH ARE DAMAGED BEYOND REPAIR BY THE CONTRACTOR AS DETERMINED BY THE ENGINEER SHALL BE REPLACED IN KIND BY THE CONTRACTOR AND TO THE SATISFACTION OF THE ENGINEER AT NO ADDITIONAL COST TO THE VILLAGE.
5. ALL TRAFFIC CONTROL AND OTHER ADVISORY SIGNS NEEDED FOR CONSTRUCTION ARE TO BE FURNISHED BY THE CONTRACTOR IN ACCORDANCE WITH THE PLANS AND THE I.D.O.T. STANDARDS FOR TRAFFIC CONTROL AND PROTECTION.

6. WHERE THE PROPOSED PAVEMENT ABUTS EXISTING PAVEMENT TO REMAIN IN PLACE (BEGIN, END, AND LIMITS OF CONSTRUCTION), THE EXISTING PAVEMENT SHALL BE SAW CUT TO PROVIDE A NEAT VERTICAL FACE BETWEEN THE PROPOSED AND EXISTING SURFACES. THIS SAW CUT WILL BE INCIDENTAL TO THE COST OF THE PAY ITEM "HOT-MIX ASPHALT SURFACE REMOVAL 2 1/4".

7. WHEN REQUESTED BY THE ENGINEER, PROTECTIVE COAT SHALL BE APPLIED TO ALL GUTTER FLAGS, FACE AND TOP OF THE CURBS AND P.C. CONCRETE SIDEWALK AND DRIVEWAYS.
8. DEBRIS REMOVAL- MATERIALS RESULTING FROM THE VARIOUS CONSTRUCTION OPERATIONS SHALL BE REMOVED AT THE END OF EACH WORK DAY TO AN APPROVED SITE. IN THE JUDGEMENT OF THE VILLAGE, SHOULD IT BE NECESSARY TO REMOVE SUCH MATERIALS, THE VILLAGE WILL REMOVE SAME AND THE CONTRACTOR SHALL BE BILLED ACCORDINGLY.
9. THE CONTRACTOR SHALL BE RESPONSIBLE FOR THE PROTECTION OF ALL UNDERGROUND OR SURFACE UTILITIES EVEN THOUGH THEY MAY NOT BE SHOWN ON THE PLANS. ANY UTILITY THAT IS DAMAGED DURING CONSTRUCTION SHALL BE REPAIRED OR REPLACED TO THE SATISFACTION OF THE ENGINEER OR THE VILLAGE. THIS WORK SHALL BE AT THE CONTRACTOR'S EXPENSE. BEFORE STARTING ANY EXCAVATION, THE CONTRACTOR SHALL CALL "J.U.L.I.E." AT 800-892-0123 FOR FIELD LOCATIONS OF BURIED ELECTRIC, TELEPHONE, GAS AND CABLE TELEVISION FACILITIES. (48 HOURS NOTIFICATION IS REQUIRED)

10. WHENEVER, DURING CONSTRUCTION OPERATIONS, ANY LOOSE MATERIAL IS DEPOSITED IN THE FLOW LINE OF DRAINAGE STRUCTURES SUCH THAT THE NATURAL FLOW OF WATER IS OBSTRUCTED, IT SHALL BE REMOVED AT THE CLOSE OF EACH WORKING DAY. AT THE CONCLUSION OF CONSTRUCTION OPERATIONS, ALL UTILITY STRUCTURES SHALL BE FREE FROM DIRT AND DEBRIS. THE WORK SPECIFIED ABOVE WILL NOT BE PAID FOR SEPARATELY BUT SHALL BE INCIDENTAL TO THE CONTRACT.

11. THE CONTRACTOR SHALL NOT OPEN OR SHUT ANY WATER VALVES OR FIRE HYDRANTS WITHOUT PRIOR AUTHORIZATION FROM THE VILLAGE WATER DEPARTMENT. UNAUTHORIZED USE SHALL SUBJECT THE OFFENDER TO ARREST AND PROSECUTION.
12. CLASS D PATCHES WILL BE DETERMINED BY THE ENGINEER IN THE FIELD AND WILL NOT EXCEED THE PLANNED QUANTITY.
13. THE THICKNESS OF HOT-MIX ASPHALT MIXTURES SHOWN IN THE PLANS ARE NORMAL. DEVIATIONS MAY OCCUR DUE TO IRREGULARITIES IN THE SURFACES OR BASE ON WHICH THEY ARE TO BE PLACED. PLAN THICKNESS SHOULD BE CONSIDERED THE MINIMUM THICKNESS PERMITTED.
14. MAILBOXES WHICH ARE IN CONFLICT WITH PROPOSED IMPROVEMENTS SHALL BE REMOVED, TEMPORARILY RELOCATED, AND REPLACED UPON COMPLETION OF THE PROPOSED IMPROVEMENTS AS DIRECTED BY THE ENGINEER. THIS WORK SHALL BE CONSIDERED INCIDENTAL TO THE PAY ITEM TRAFFIC CONTROL AND PROTECTION.
15. PAY ITEMS IN THE SUMMARY OF QUANTITIES HAVE BEEN ESTIMATED. IF, IN THE ENGINEER'S OPINION, THE WORK IS NOT REQUIRED, THE ITEM WILL BE DEDUCTED FROM THE CONTRACT AND NO ADDITIONAL COMPENSATION WILL BE ALLOWED.
16. CONTRACTOR SHALL NOT PLACE SOD UNTIL THE TEMPERATURE IS 80° OR LESS AND THE FORECAST FOR THE NEXT 7 DAYS SHOWS TEMPERATURES OF 80° OR LESS. IF ALL OTHER PAY ITEMS ARE COMPLETED, THE CONTRACTOR WILL NOT BE CHARGED WORKING DAYS FOR DELAYS IN PARKWAY RESTORATION DUE TO TEMPERATURE.

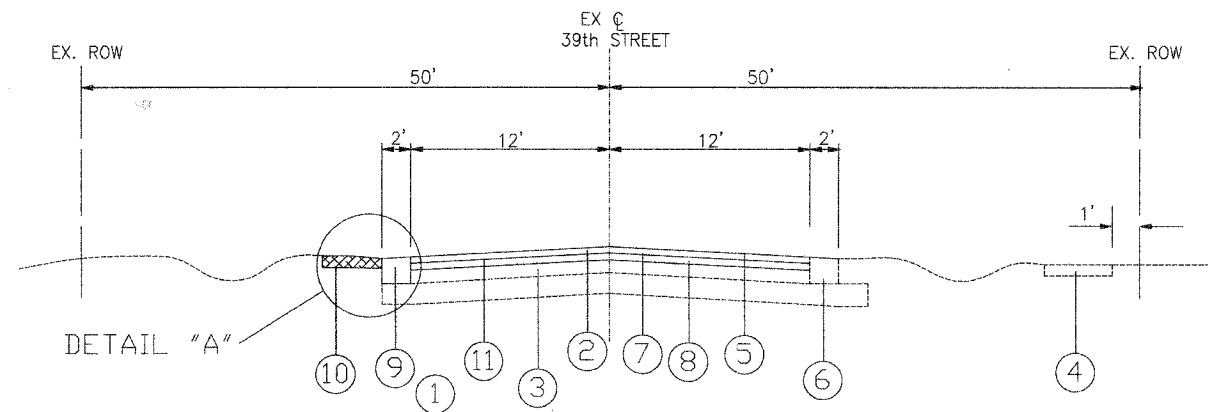
17. THE CONTRACTOR SHALL TAKE EXTRA CARE IN GRADING AND EXCAVATING NEAR TREES WHICH ARE NOT MARKED FOR REMOVAL SO AS NOT TO CAUSE INJURY TO THE ROOT SYSTEM OR TRUNKS. HAND EXCAVATION SHALL BE PERFORMED IF MAJOR ROOTS ARE PRESENT. MAJOR ROOTS OF A TREE THAT ARE TO REMAIN IN PLACE EXTENDING INTO THE EXCAVATION AREAS AT AN ELEVATION THAT WOULD INTERFERE WITH ANY PORTION OF THE PLANNED CONSTRUCTION SHALL BE SEVERED AT A POINT IMMEDIATELY OUTSIDE OF THE EXCAVATION AREA IN A MANNER THAT WILL CAUSE THE LEAST AMOUNT OF SYSTEMIC TO THE REMAINING TREE STRUCTURE. THE EXPENSE OF THE REQUIRED HAND EXCAVATION AND/OR THE CUTTING OF MAJOR TREE ROOTS, AS DESCRIBED ABOVE, SHALL BE CONSIDERED INCIDENTAL TO THE CONTRACT LINE ITEM BEING REMOVED OR INSTALLED AT THAT LOCATION.

18. THE PRIMARY CONCERN OF THE VILLAGE IS TO MAINTAIN A SAFE TRAVEL WAY FOR THE PUBLIC AND A SAFE ENVIRONMENT FOR THE WORK IN THE CONSTRUCTION ZONE. THE CONTRACTOR IS EXPECTED TO COMPLY WITH THE STANDARD SPECIFICATIONS, CONTRACT PLANS, THE SPECIAL PROVISIONS AND DIRECTIONS FROM THE ENGINEER CONCERNING TRAFFIC CONTROL AND PROTECTION. THE CONTRACTOR SHALL PROVIDE A TELEPHONE NUMBER WHERE A RESPONSIBLE INDIVIDUAL CAN BE CONTACTED ON A 24-HOUR-A-DAY BASIS TO RECEIVE NOTIFICATION OF ANY DEFICIENCIES REGARDING TRAFFIC CONTROL AND PROTECTION. THE CONTRACTOR SHALL IMMEDIATELY RESPOND CORRECTING TRAFFIC CONTROL DEFICIENCIES BY DISPATCHING WORKERS, MATERIALS AND EQUIPMENT TO CORRECT SUCH DEFICIENCIES. FAILURE TO COMPLY WITH DIRECTIONS FROM THE ENGINEER FOR CORRECTIONS OR MODIFICATIONS TO THE TRAFFIC CONTROL AND PROTECTION WILL RESULT IN A DEDUCTION OF EITHER \$1,000 OR 0.05 PERCENT OF THE AWARDED SPECIFICATIONS. THIS CHARGE IS SEPERATE FROM THE COST OF ANY CORRECTIVE WORK ORDERED. THE CONTRACT VALUE, WHICHEVER IS GREATER, IN ACCORDANCE WITH ARTICLE 105.03 OF THE STANDARD CONTRACTOR SHALL NOT BE RELIEVED OF ANY CONTRACTURAL RESPONSIBILITIES BY THE VILLAGE'S ACTIONS.
19. MATERIAL INSPECTION
ALL HOT-MIX ASPHALT AND P.C. CONCRETE MATERIALS USED ON THIS PROJECT SHALL BE TESTED AND INSPECTED IN ACCORDANCE WITH THE ILLINOIS DEPARTMENT OF TRANSPORTATION'S QC/QA REQUIREMENTS. THE CONTRACTOR SHALL PROVIDE A REQUEST FOR MATERIAL TESTING TO THE ILLINOIS DEPARTMENT OF TRANSPORTATION BUREAU OF MATERIALS ORDER BOARD (PHONE 847 705-4337 OR FAX 847-705-4529) BY 4 PM, 24-HOURS IN ADVANCE OF CONSTRUCTION FOR INSPECTION OF ALL HOT-MIX ASPHALT AND CONCRETE MATERIALS USED ON THIS PROJECT. THE CONTRACTOR IS TO SUBMIT A QC PLAN FOR HMA AND CONCRETE MATERIALS TO THE QA MANAGER FOR APPROVAL PRIOR TO CONSTRUCTION OPERATIONS COMMENCING. THE QA MANAGER WILL APPROVE THIS PLAN AND COPY THE DISTRICT OF LOCAL ROADS OFFICE ON THE APPROVAL LETTER. QC AND QA REPORTS FOR CONCRETE WILL BE SENT TO THE DISTRICT OF LOCAL ROADS OFFICE AFTER REVIEW AND APPROVAL BY THE QA MANAGER. QC REPORTS FOR BITUMINOUS MIXTURES WILL BE TRANSMITTED DIRECTLY BY THE CONTRACTOR DAILY DURING PRODUCTION. THE DISTRICT WILL PREPARE AND RETAIN THE QA PLANT REPORTS. THE QA FIELD REPORTS WILL BE SUBMITTED BY THE QA MANAGER TO THE DISTRICT VIA THE DISTRICT OF LOCAL ROADS OFFICE.

*VILLAGE OF DOWNERS GROVE
PUBLIC WORKS ENGINEERING DIVISION*
5101 WALNUT AVENUE 60515 (630)434-5460

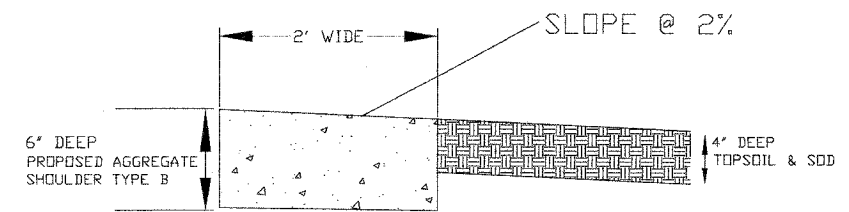
REVISIONS		39th STREET RESURFACING PROJECT GENERAL NOTES	
NAME	DATE		
		DATE: 1/12/07	CHECKED BY: S.A.V.
		SCALE: N.T.S.	DRAWN BY: R.W.B.
		FILE NAME: C:\CADFILES\39th SW\GEN-NOTES	

CONTRACT NO. 83935



EXISTING & PROPOSED TYPICAL SECTION

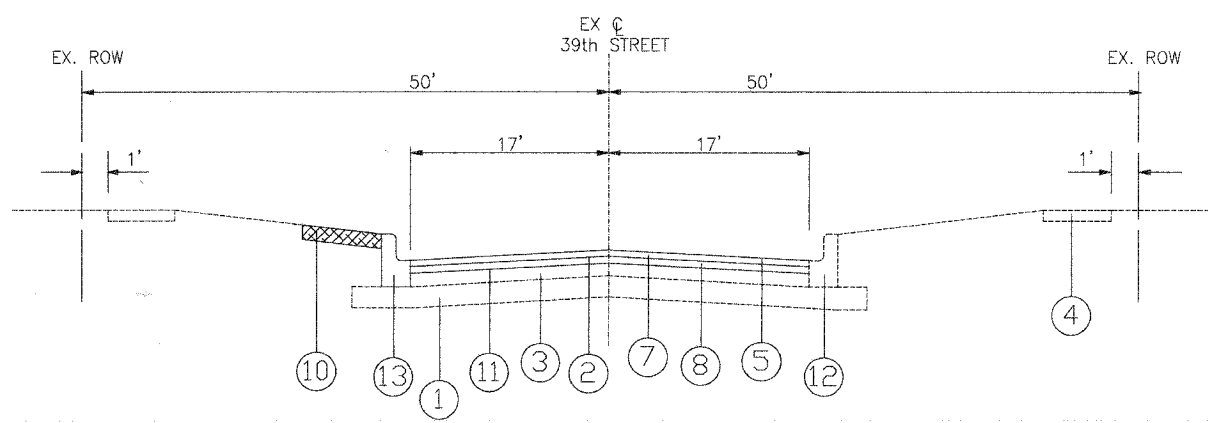
39th STREET
(STA. 68+84 TO STA. 97+50)



DETAIL "A"
SHOULDER DETAIL

LEGEND

- ① EXISTING SUBGRADE
- ② EXISTING BITUMINOUS PAVEMENT, 3.5' AND VARIES
- ③ EXISTING AGGREGATE BASE, 8" AND VARIES
- ④ EXISTING PORTLAND CEMENT CONCRETE SIDEWALK
- ⑤ PROPOSED HMA SURFACE REMOVAL, 2 1/4"
- ⑥ EXISTING AGGREGATE SHOULDER
- ⑦ PROPOSED HMA SURFACE COURSE, MIX "D", N50, 1 1/2"
- ⑧ PROPOSED POLYMERIZED LEVELING BINDER (MACHINE METHOD), IL-4.75, N50, 3/4"
- ⑨ PROPOSED AGGREGATE SHOULDER
- ⑩ PROPOSED SODDING, SALT TOLERANT & TOP SOIL FURNISH AND PLACE, 4"
- ⑪ PROPOSED AREA REFLECTIVE CRACK CONTROL TREATMENT
- ⑫ EXISTING COMBINATION CONCRETE CURB & GUTTER, TYPE M4-12 REMOVAL WHERE SHOWN ON PLANS
- ⑬ PROPOSED COMBINATION CONCRETE CURB & GUTTER, TYPE M4-12 REPLACEMENT WHERE SHOWN ON PLANS



EXISTING & PROPOSED TYPICAL SECTION

39th STREET
(STA. 97+50 TO STA. 99+39)

HOT-MIX ASPHALT MIXTURE REQUIREMENTS		
MIXTURE TYPE	AC TYPE	AIR VOIDS
HOT MIX ASPHALT SURFACE COURSE, MIX "D", N50 (IL 9.5 mm)	PG 64-22	4% @ 50 GYR
POLYMERIZED LEVELING BINDER (MACHINE METHOD), IL-4.75, N50	SBS/SBR PG 76-28/-22	4% @ 50 GYR
HOT MIX ASPHALT DRIVEWAY REMOVAL AND REPLACEMENT		
HOT MIX ASPHALT SURFACE COURSE, MIX C, N50 (IL 9.5 MM); 2"	PG 64-22	4% @ 50 GYR
HOT MIX ASPHALT BASE COURSE (HMA BINDER IL-19 mm); PE-6", CE-8"	PG*64-22	4% @ 70 GYR
CLASS D PATCHES, 6" (SPECIAL)	PG 64-22	4% @ 50 GYR

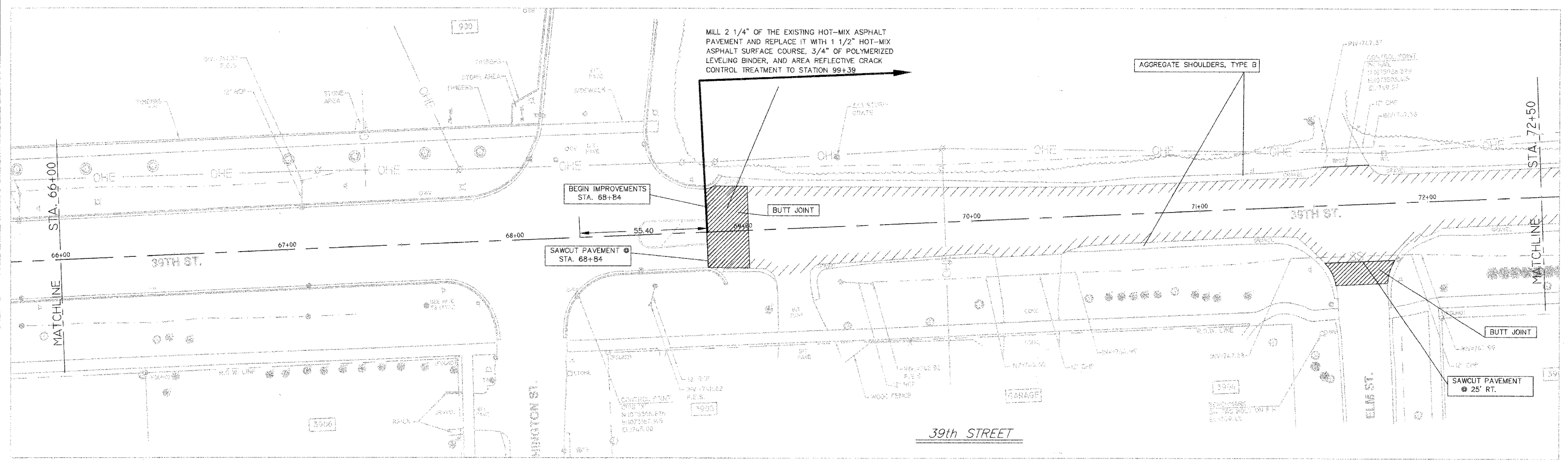
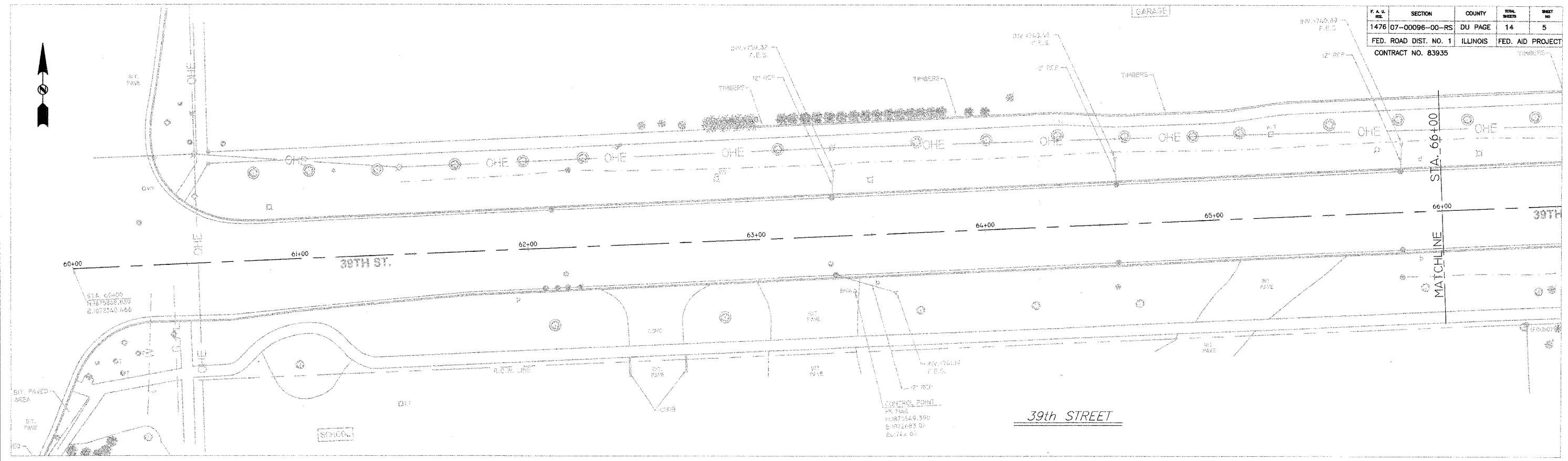
-THE UNIT WEIGHT USED TO CALCULATE ALL HMA SURFACE MIXTURE QUANTITIES IS 112 LBS/SQYD/IN.

*-WHEN RAP EXCEEDS 20%, THE NEW ASPHALT BINDER IN THE MIX SHALL BE PG 58-22.

REVISIONS		39th STREET RESURFACING PROJECT TYPICAL SECTIONS	
NAME	DATE		
		DATE: 1/12/07	CHECKED BY: S.A.V.
		SCALE: N.T.S.	DRAWN BY: R.W.B.
		FILE NAME: C:\CADFILES\39th St\39th TYP SEC	

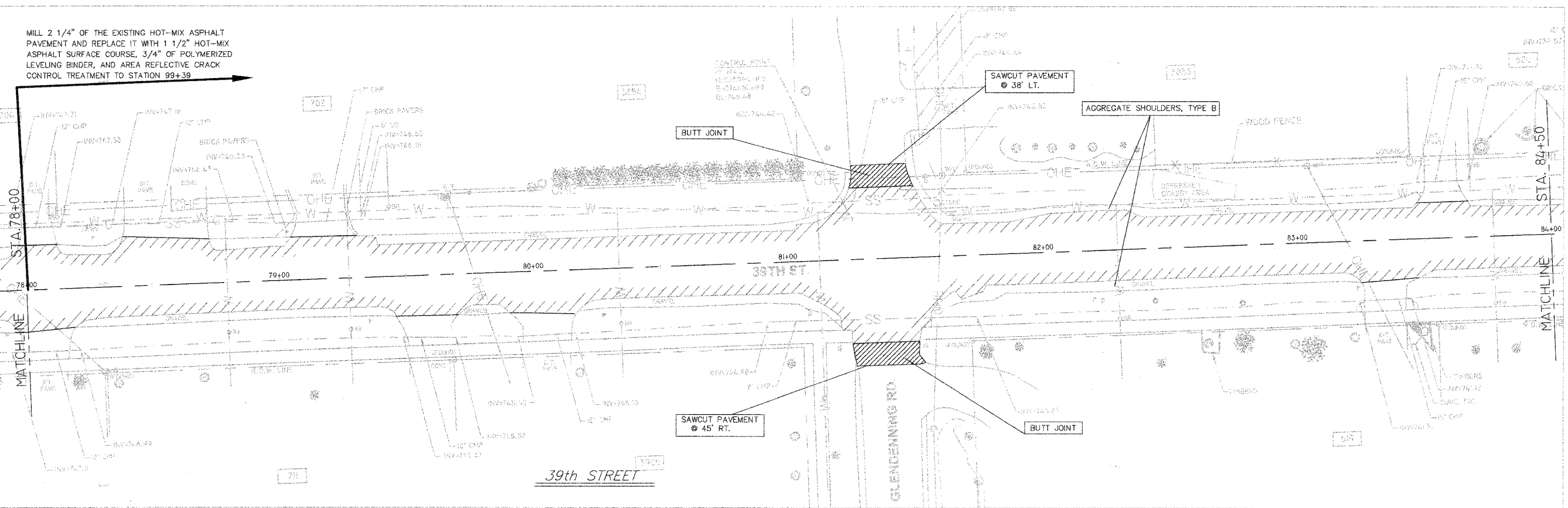
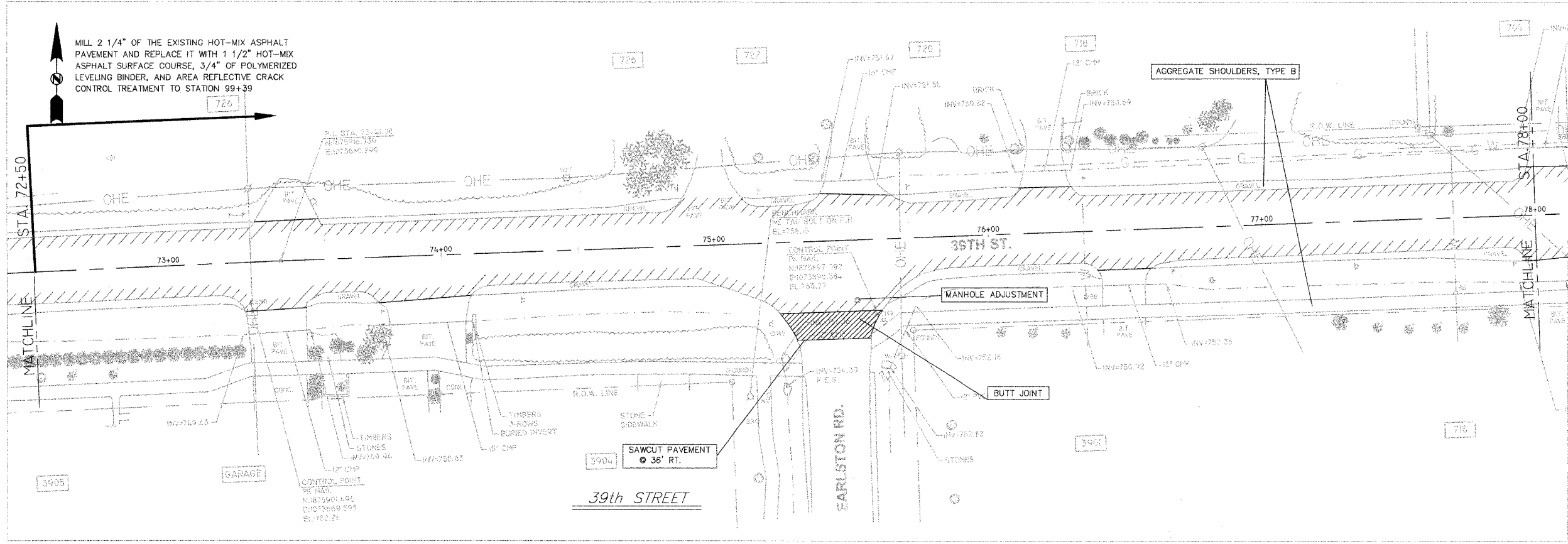
VILLAGE OF DOWNERS GROVE
PUBLIC WORKS ENGINEERING DIVISION
5101 WALNUT AVENUE 60515 (630)434-5460

F.A.D. NO.	SECTION	COUNTY	TOTAL SHEETS	SHEET NO.
1476	07-00096-00-RS	DU PAGE	14	5
FED. ROAD DIST. NO. 1		ILLINOIS	FED. AID PROJECT	
CONTRACT NO. 83935				



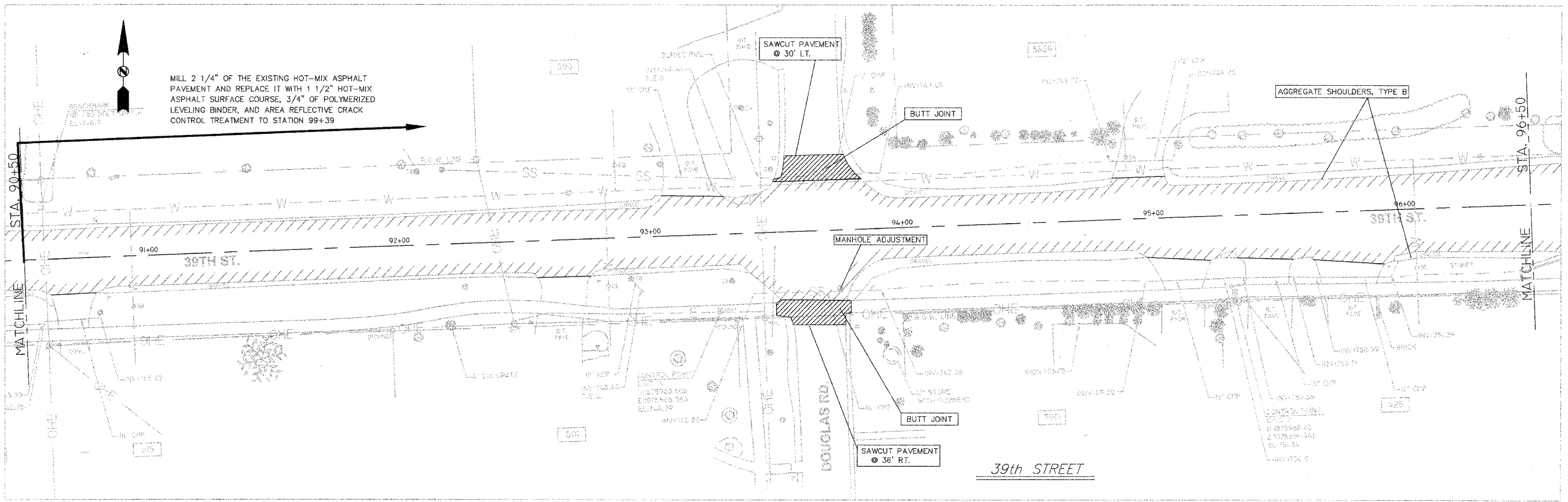
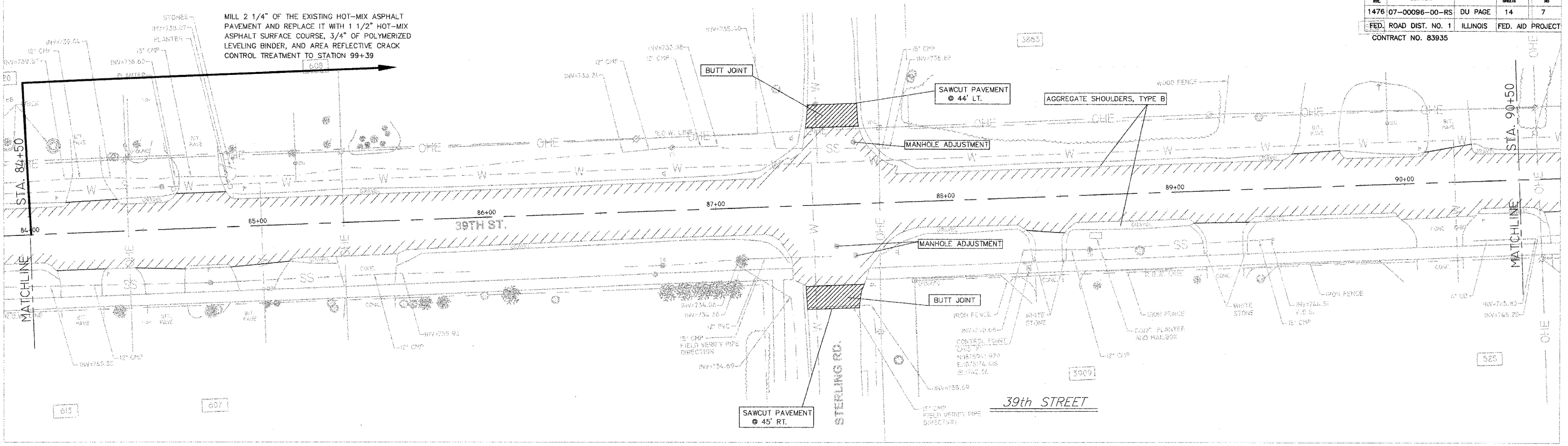
VILLAGE OF DOWNERS GROVE
PUBLIC WORKS ENGINEERING DIVISION
5101 WALNUT AVENUE 60515 (630)434-5460

REVISIONS		39th STREET RESURFACING PROJECT	
NAME	DATE		
		PLAN SHEET (STA. 68+84 TO STA. 72+50)	
		DATE: 1/12/07	CHECKED BY: S.A.V.
		SCALE: 1" = 20'	DRAWN BY: R.W.B.
		FILE NAME: C:\CADFILES\39th 84\39th-1	



VILLAGE OF DOWNERS GROVE
PUBLIC WORKS ENGINEERING DIVISION
5101 WALNUT AVENUE 60515 (630)434-5460

REVISIONS		39th STREET RESURFACING PROJECT	
NAME	DATE		
		PLAN SHEET (STA. 72+50 TO STA. 84+50)	
		DATE: 1/12/07	CHECKED BY: S.A.V.
		SCALE: 1" = 20'	DRAWN BY: R.W.B.
		FILE NAME: C:\CADFILES\8914 84 8914-2	

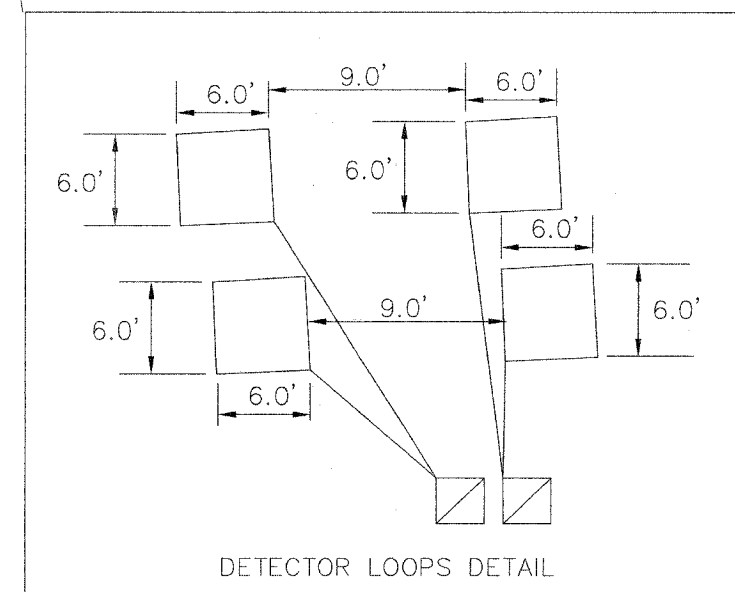
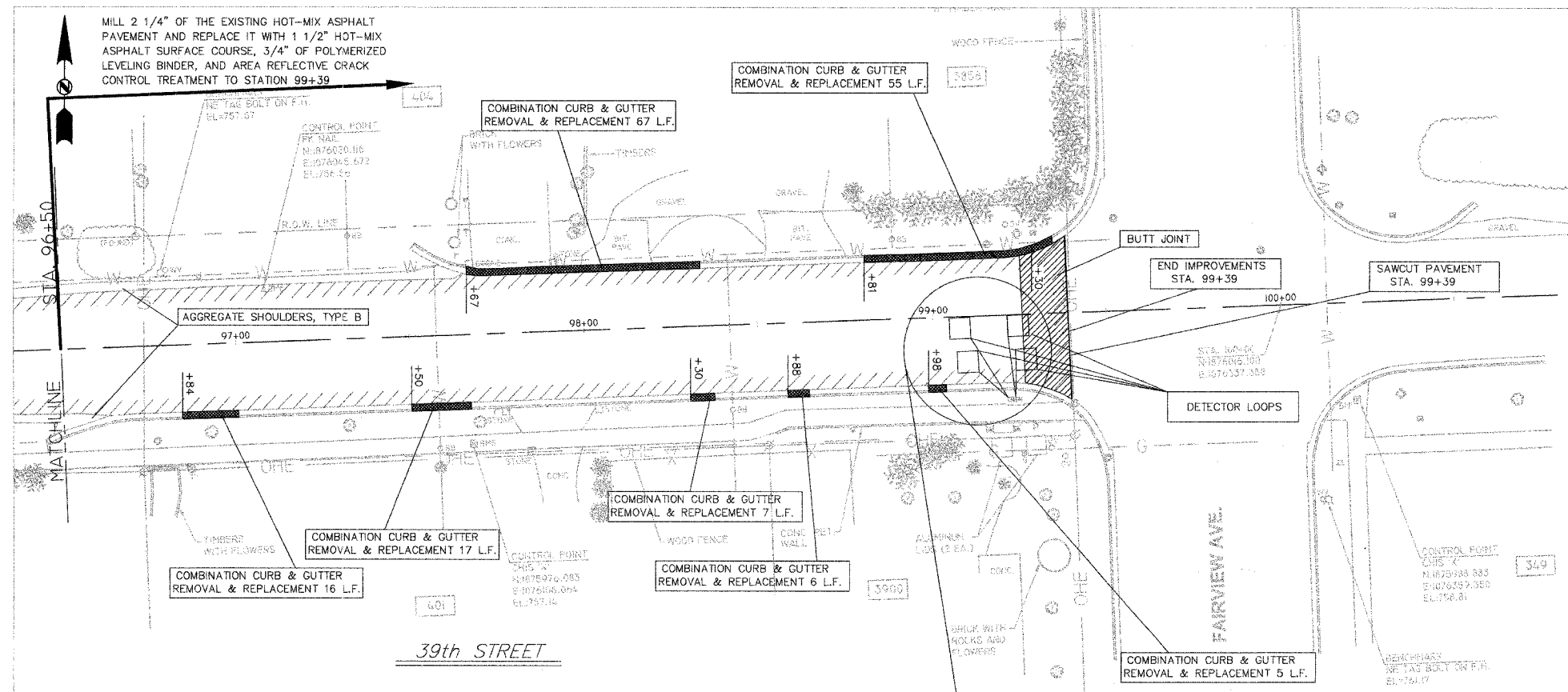


VILLAGE OF DOWNERS GROVE
PUBLIC WORKS ENGINEERING DIVISION
5101 WALNUT AVENUE 60515 (630)434-5460

REVISIONS		39th STREET RESURFACING PROJECT	
NAME	DATE		
		PLAN SHEET (STA. 84+50 TO STA. 96+50)	
		DATE: 1/12/07	CHECKED BY: S.A.V.
		SCALE: 1" = 20'	DRAWN BY: R.W.B.
		FILE NAME: C:\CADFILES\39th ST\39th-3	

F.A.R. NO.	SECTION	COUNTY	TOTAL SHEETS	SHEET NO.
1476	07-00096-00-RS	DU PAGE	14	8
FED. ROAD DIST. NO. 1		ILLINOIS	FED. AID PROJECT	

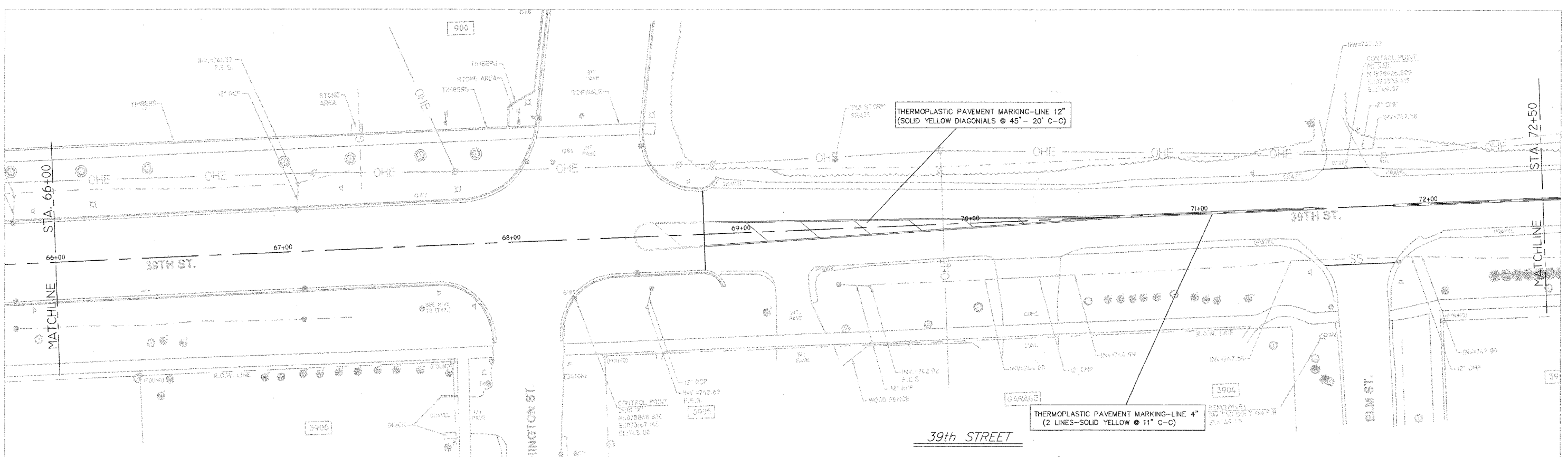
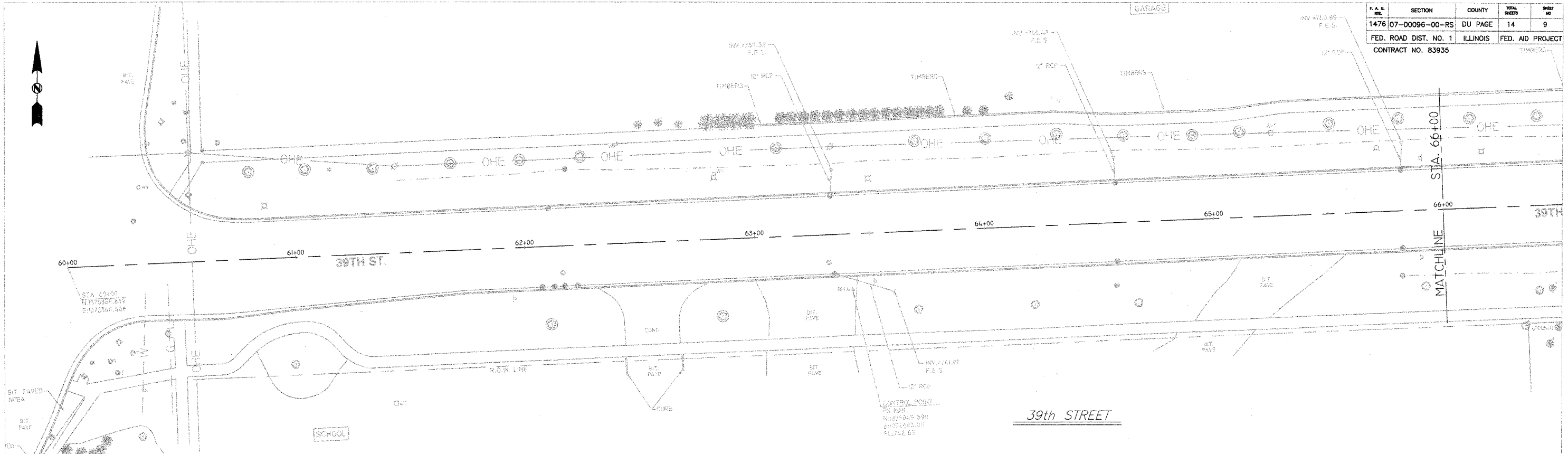
CONTRACT NO. 83935



VILLAGE OF DOWNERS GROVE
PUBLIC WORKS ENGINEERING DIVISION
5101 WALNUT AVENUE 60515 (630)434-5460

REVISIONS		39th STREET RESURFACING PROJECT	
NAME	DATE		
		PLAN SHEET (STA. 96+50 TO STA. 99+39)	
		DATE: 1/12/07	CHECKED BY: S.A.V.
		SCALE: 1" = 20'	DRAWN BY: R.W.B.
		FILE NAME: C:\CADFILES\39th SR\39th-4	

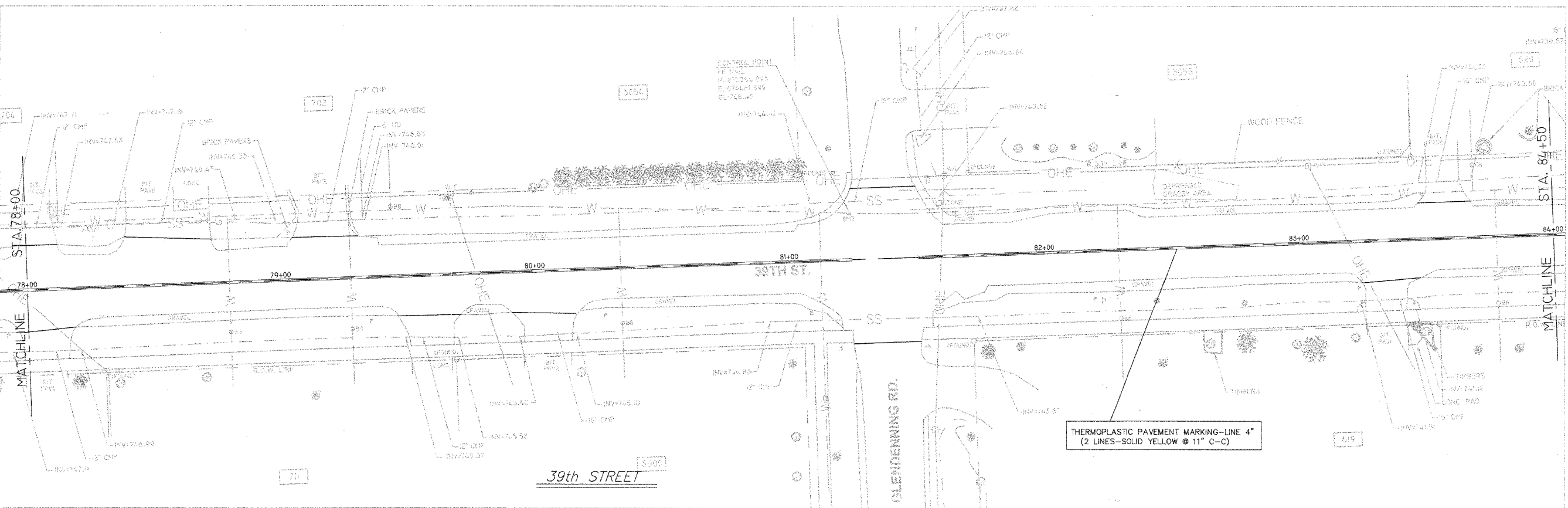
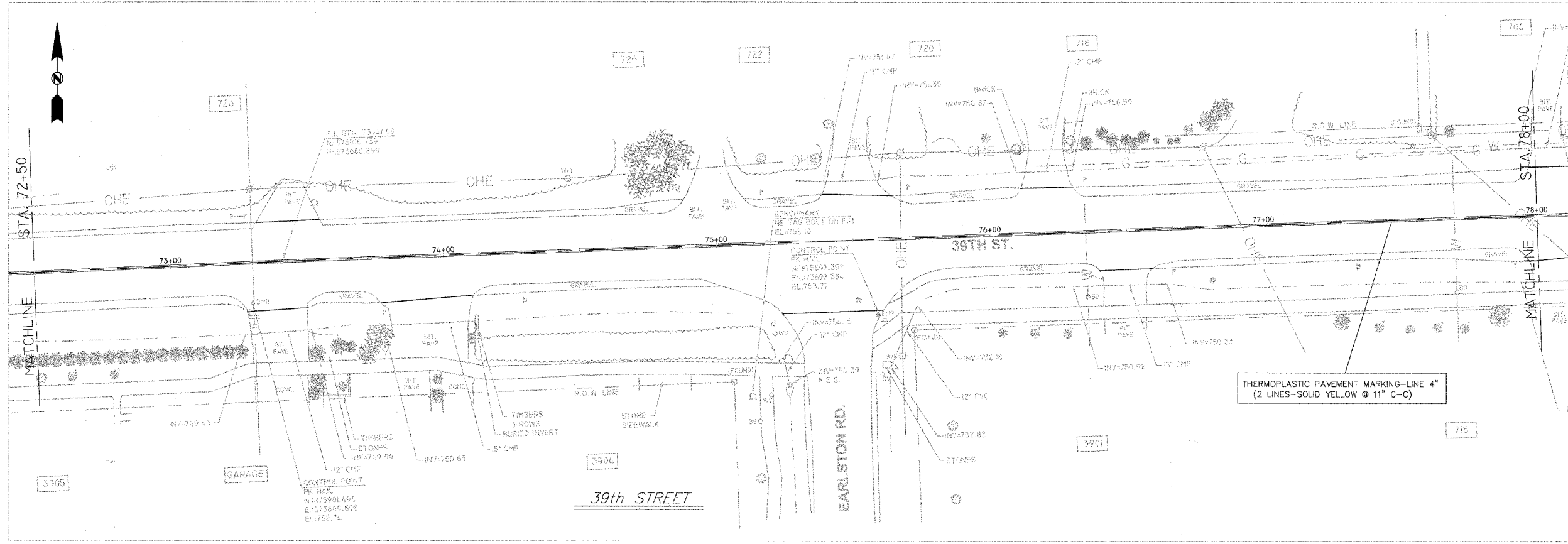
F.A.R. NO.	SECTION	COUNTY	TOTAL SHEETS	SHEET NO.
1476	07-00096-00-RS	DU PAGE	14	9
FED. ROAD DIST. NO. 1		ILLINOIS	FED. AID PROJECT	
CONTRACT NO. 83935		TIMBERG		



VILLAGE OF DOWNERS GROVE
PUBLIC WORKS ENGINEERING DIVISION
5101 WALNUT AVENUE 60515 (630)434-5460

REVISIONS		39th STREET RESURFACING PROJECT	
NAME	DATE	PLAN SHEET (STA. 68+84 TO STA. 72+50)	
		DATE: 1/12/07	CHECKED BY: S.A.V.
		SCALE: 1" = 20'	DRAWN BY: R.W.B.
		FILE NAME: C:\CADFILES\39th ST\39th-1	

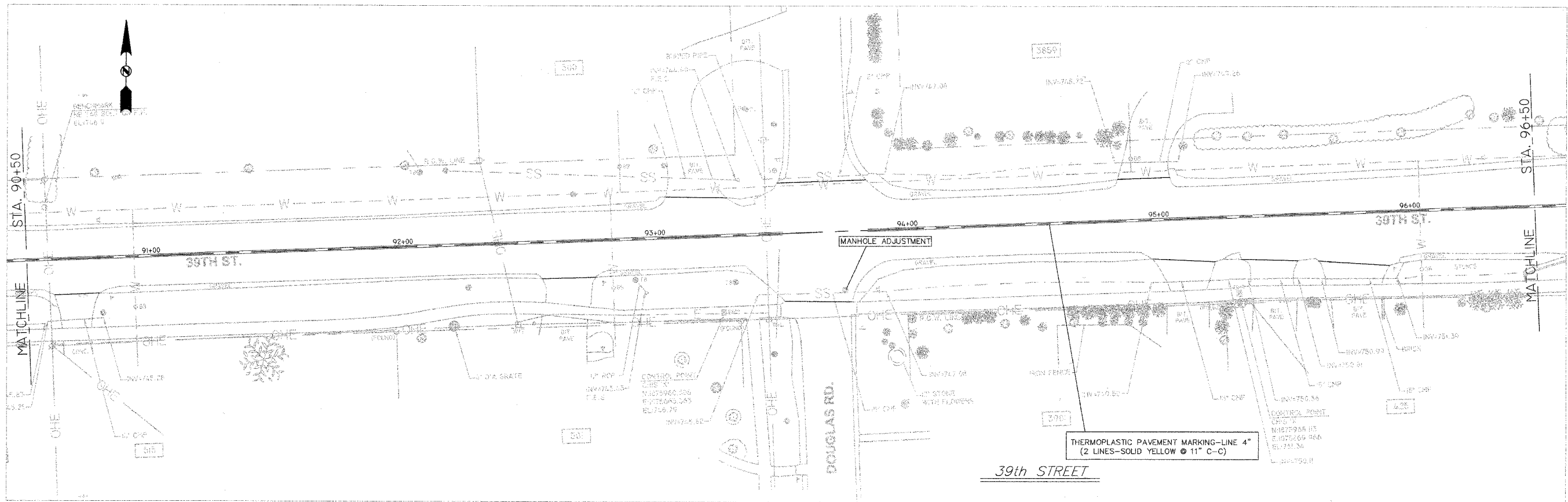
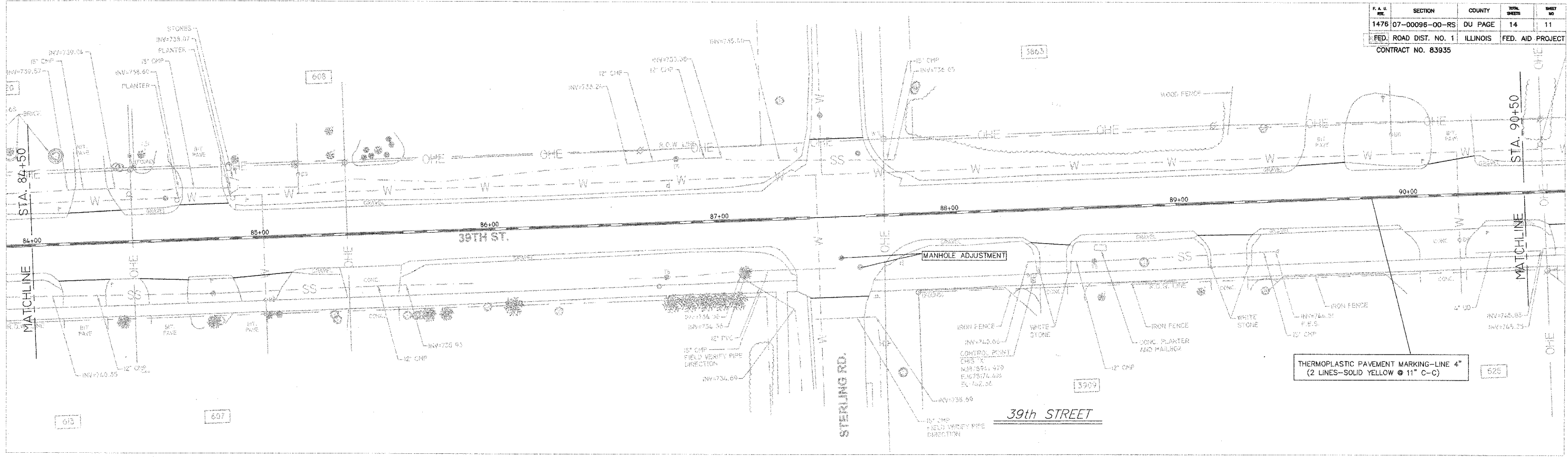
F. & M. NO.	SECTION	COUNTY	SHEET NO.	SHEET OF
1476	07-00096-00-RS	DU PAGE	14	10
FED. ROAD DIST. NO. 1		ILLINOIS	FED. AID PROJECT	
CONTRACT NO. 83935				



VILLAGE OF DOWNERS GROVE
PUBLIC WORKS ENGINEERING DIVISION
5101 WALNUT AVENUE 60515 (630)434-5460

REVISIONS		39th STREET RESURFACING PROJECT	
NAME	DATE	DATE	CHECKED BY
		1/12/07	S.A.V.
		SCALE: 1" = 20'	DRAWN BY: R.W.B.
FILE NAME: C:\CADFILES\9016 S\9016-2			

F.A. #	SECTION	COUNTY	TOTAL SHEETS	SHEET NO.
1476	07-00096-00-RS	DU PAGE	14	11
FED. ROAD DIST. NO. 1		ILLINOIS	FED. AID PROJECT	
CONTRACT NO. 83935				

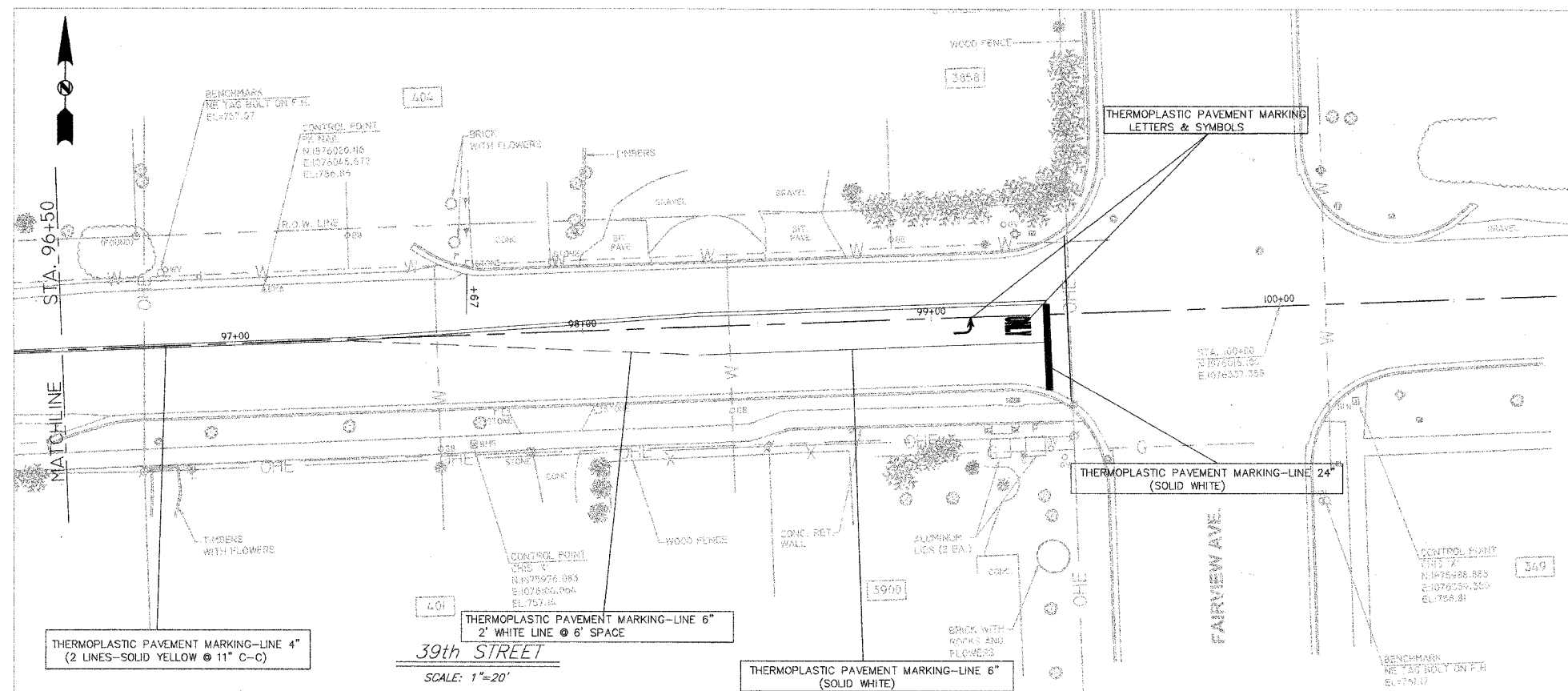


VILLAGE OF DOWNERS GROVE
PUBLIC WORKS ENGINEERING DIVISION
5101 WALNUT AVENUE 60515 (630)434-5460

REVISIONS		39th STREET RESURFACING PROJECT	
NAME	DATE		
		PLAN SHEET (STA. 84+50 TO STA. 96+50)	
		DATE: 1/12/07	CHECKED BY: S.A.V.
		SCALE: 1" = 20'	DRAWN BY: R.W.B.
		FILE NAME: C:\CADFILES\2005\07\0902-0	

P. A. U. NO.	SECTION	COUNTY	TOTAL SHEETS	SHEET NO.
1476	07-00096-00-RS	DU PAGE	14	12
FED. ROAD DIST. NO. 1		ILLINOIS	FED. AID PROJECT	

CONTRACT NO. 83935

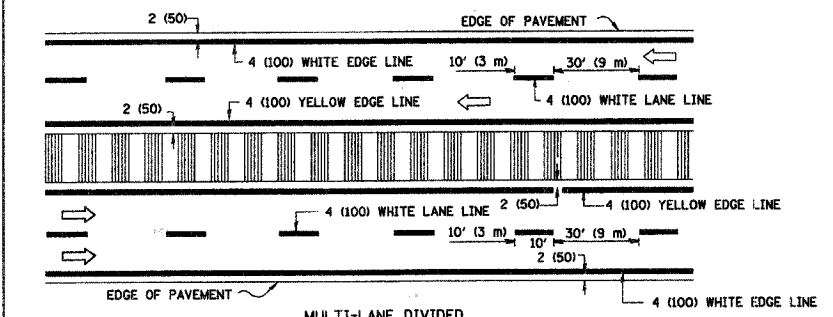
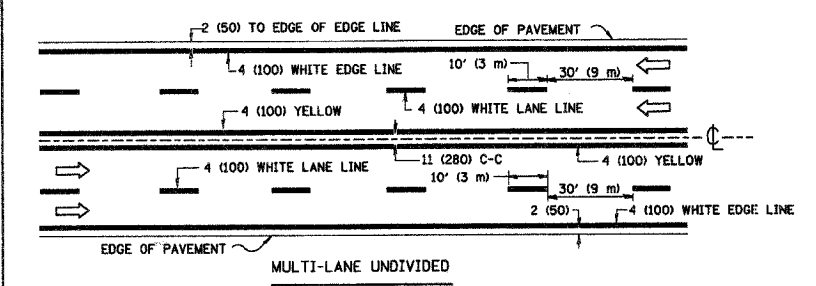
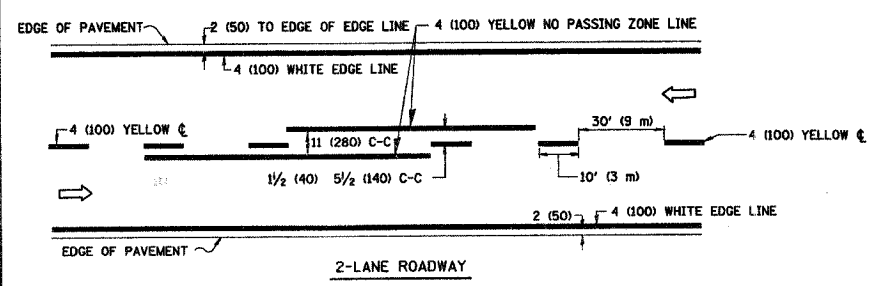


VILLAGE OF DOWNERS GROVE
PUBLIC WORKS ENGINEERING DIVISION

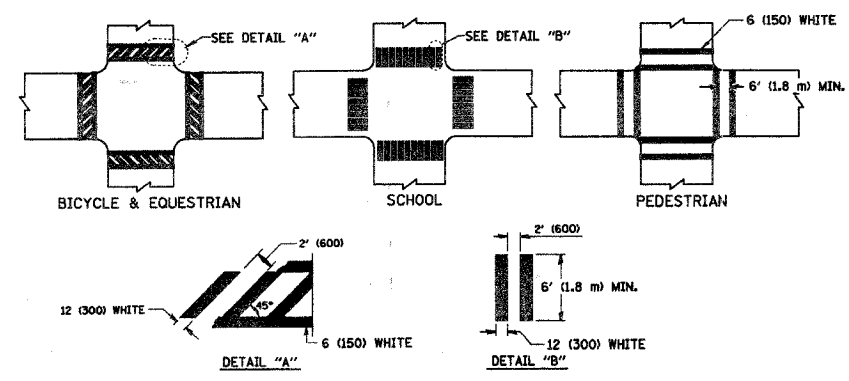
5101 WALNUT AVENUE 60515 (630)434-5460

REVISIONS		39th STREET RESURFACING PROJECT	
NAME	DATE		
		PLAN SHEET (STA. 96+50 TO STA. 99+39)	
		DATE: 1/12/07	CHECKED BY: S.A.V.
		SCALE: 1" = 20'	DRAWN BY: R.W.B.
		FILE NAME: C:\CADFILES\39th SW\39th-4	

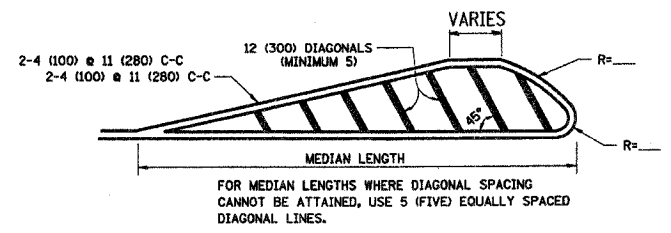
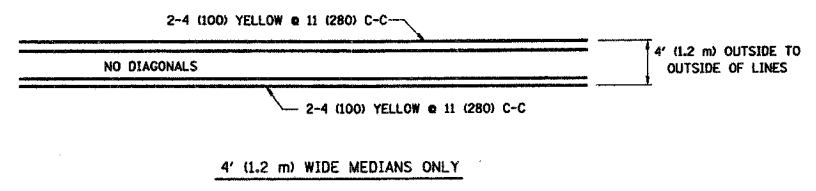
F.A. RTE.	SECTION	COUNTY	TOTAL SHEETS	SHEET NO.
176	07-0076-00-13	DU PAGE	14	13
STA. TO STA.				
FED. ROAD DIST. NO. 1 ILLINOIS FED. AID PROJECT				



TYPICAL LANE AND EDGE LINE MARKING

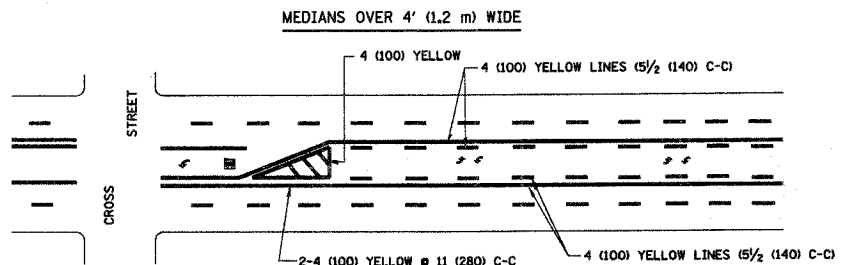


TYPICAL CROSSWALK MARKING

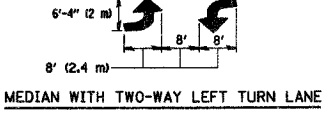


FOR MEDIAN LENGTHS WHERE DIAGONAL SPACING CANNOT BE ATTAINED, USE 5 (FIVE) EQUALLY SPACED DIAGONAL LINES.

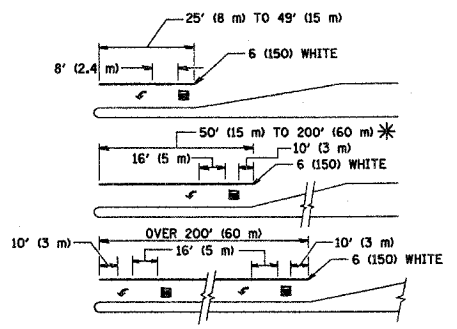
DIAGONAL LINE SPACING: 50' (15 m) C-C (LESS THAN 30MPH (50 km/h))
 75' (25 m) C-C 30MPH (50 km/h) TO 45MPH (70 km/h)
 150' (45 m) C-C (MORE THAN 45MPH (70 km/h))



A MINIMUM OF TWO PAIRS OF TURN ARROWS SHALL BE USED, WHITE IN COLOR. ADDITIONAL PAIRS SHALL BE PLACED AT 200' (60 m) TO 300' (90 m) INTERVALS.



TYPICAL PAINTED MEDIAN MARKING

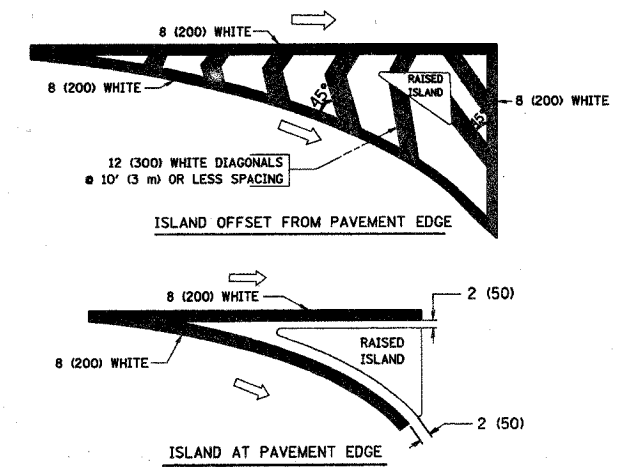


FULL SIZE LETTERS 8" (2.4 m) AND ARROWS SHALL BE USED.
 AREA = 15.6 SQ. FT. (1.5 m²) AREA = 20.8 SQ. FT. (1.9 m²)

* TURN LANES IN EXCESS OF 400' (120 m) IN LENGTH MAY HAVE AN ADDITIONAL SET OF ARROW - "ONLY" INSTALLED MIDWAY BETWEEN THE OTHER TWO SETS OF ARROW - "ONLY".

TYPICAL LEFT (OR RIGHT) TURN LANE

TYPICAL TURN LANE MARKING



TYPICAL ISLAND MARKING

TYPE OF MARKING	WIDTH OF LINE	PATTERN	COLOR	SPACING / REMARKS
CENTERLINE ON 2 LANE PAVEMENT	4 (100)	SKIP-DASH	YELLOW	10' (3 m) LINE WITH 30' (9 m) SPACE
CENTERLINE ON MULTI-LANE UNDIVIDED PAVEMENT	2 @ 4 (100)	SOLID	YELLOW	11 (280) C-C
NO PASSING ZONE LINES FOR ONE DIRECTION FOR BOTH DIRECTIONS	4 (100) 2 @ 4 (100)	SOLID SOLID	YELLOW YELLOW	5/2 (140) C-C FROM SKIP-DASH CENTERLINE 11 (280) C-C OMIT SKIP-DASH CENTERLINE BETWEEN
LANE LINES	4 (100) 5 (125) ON FREEWAYS	SKIP-DASH SKIP-DASH	WHITE WHITE	10' (3 m) LINE WITH 30' (9 m) SPACE
DOTTED LINES (EXTENSIONS OF CENTER, LANE OR TURN LANE MARKINGS)	SAME AS LINE BEING EXTENDED	SKIP-DASH	SAME AS LINE BEING EXTENDED	2' (600) LINE WITH 6' (1.8 m) SPACE
EDGE LINES	4 (100)	SOLID	YELLOW-LEFT WHITE-RIGHT	OUTLINE MOUNTABLE MEDIANS IN YELLOW. EDGE LINES ARE NOT USED NEXT TO BARRIER CURB
TURN LANE MARKINGS	6 (150) LINE; FULL SIZE LETTERS & SYMBOLS (8" (2.4m))	SOLID	WHITE	SEE TYPICAL TURN LANE MARKING DETAIL
TWO WAY LEFT TURN MARKING	2 @ 4 (100) EACH DIRECTION	SKIP-DASH AND SOLID	YELLOW	10' (3 m) LINE WITH 30' (9 m) SPACE FOR SKIP-DASH; 5/2 (140) C-C BETWEEN SOLID LINE AND SKIP-DASH LINE
	8' (2.4m) LEFT ARROW	IN PAIRS	WHITE	SEE TYPICAL TWO-WAY LEFT TURN MARKING DETAIL
CROSSWALK LINES (PEDESTRIAN) A. DIAGONALS (BIKE & EQUESTRIAN) B. LONGITUDINAL BARS (SCHOOL)	2 @ 6 (150) 2 (600) @ 45° 2 (600) @ 90°	SOLID SOLID SOLID	WHITE WHITE WHITE	NOT LESS THAN 6' (1.8 m) APART 2' (600) APART 2' (600) APART SEE TYPICAL CROSSWALK MARKING DETAILS.
STOP LINES	24 (600)	SOLID	WHITE	PLACE 4' (1.2 m) IN ADVANCE OF AND PARALLEL TO CROSSWALK, IF PRESENT. OTHERWISE, PLACE AT DESIRED STOPPING POINT, PARALLEL TO CROSSROAD CENTERLINE, WHERE POSSIBLE
PAINTED MEDIANS	2 @ 4 (100) WITH 12 (300) DIAGONALS @ 45° NO DIAGONALS USED FOR 4' (1.2 m) WIDE MEDIANS	SOLID	YELLOW; TWO WAY TRAFFIC WHITE; ONE WAY TRAFFIC	11 (280) C-C FOR THE DOUBLE LINE SEE TYPICAL PAINTED MEDIAN MARKING.
GORE MARKING AND CHANNELIZING LINES	8 (200) WITH 12 (300) DIAGONALS @ 45°	SOLID	WHITE	DIAGONALS: 15' (4.5 m) C-C (LESS THAN 30MPH (50 km/h)) 20' (6 m) C-C 30MPH (50 km/h) TO 45MPH (70 km/h) 30' (9 m) C-C (OVER 45MPH (70 km/h))
RAILROAD CROSSING	24 (600) TRANSVERSE LINES; "RR" IS 6' (1.8 m) LETTERS; 16 (400) LINE FOR "X"	SOLID	WHITE	SEE STATE STANDARD 780001 AREA OF: "R"=3.6 SQ. FT. (0.33 m ²) EACH "X"=54.0 SQ. FT. (5.0 m ²)
SHOULDER DIAGONALS	12 (300) @ 45°	SOLID	WHITE - RIGHT YELLOW - LEFT	50' (15 m) C-C (LESS THAN 30MPH (50 km/h)) 75' (25 m) C-C (30 MPH (50 km/h) TO 45MPH (70 km/h)) 150' (45 m) C-C (OVER 45MPH (70 km/h))

FOR FURTHER DETAILS ON PAVEMENT MARKING REFER TO STANDARD SPECIFICATIONS FOR ROAD AND BRIDGE CONSTRUCTION AND STATE STANDARD 78000L

All dimensions are in inches (millimeters) unless otherwise shown.

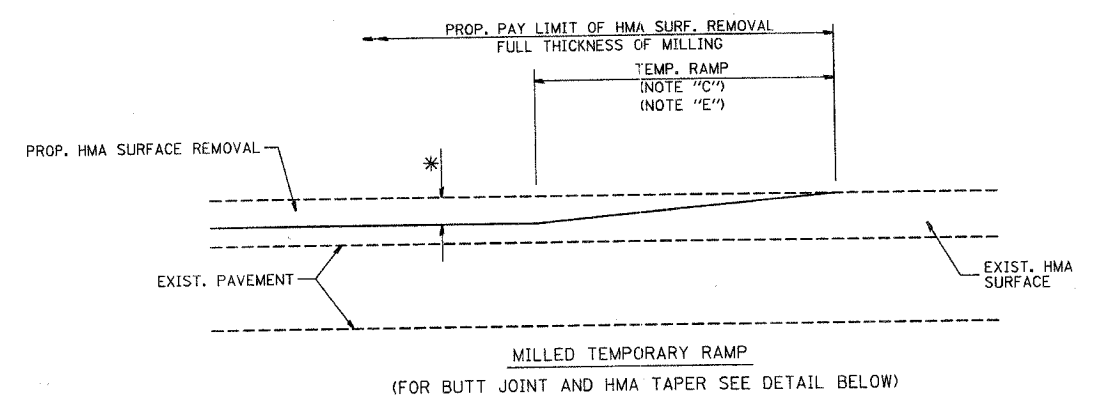
REVISIONS	
NAME	DATE
EVERS	03-19-90
T. RAMMACHER	10-27-94
ALEX HOUSEH	10-09-96
ALEX HOUSEH	10-17-96
T. RAMMACHER	01-06-00

ILLINOIS DEPARTMENT OF TRANSPORTATION
 DISTRICT ONE
 TYPICAL PAVEMENT MARKINGS

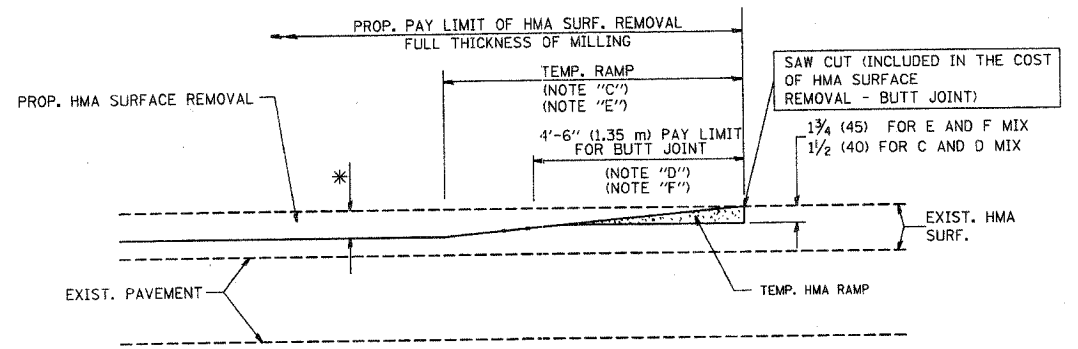
SCALE: NONE
 DRAWN BY CADD
 CHECKED BY
 TC-13

PLOT DATE = 8/12/2007
 PLOT SCALE = 1/8" = 1'-0"
 PLOT SCALE = 1/8" = 1'-0"
 USER NAME = bswan-d

F.A. RTE.	SECTION	COUNTY	TOTAL SHEETS	SHEET NO.
147	07	COOK	14	14
STA. TO STA.				
FED. ROAD DIST. NO. 1 ILLINOIS FED. AID PROJECT				

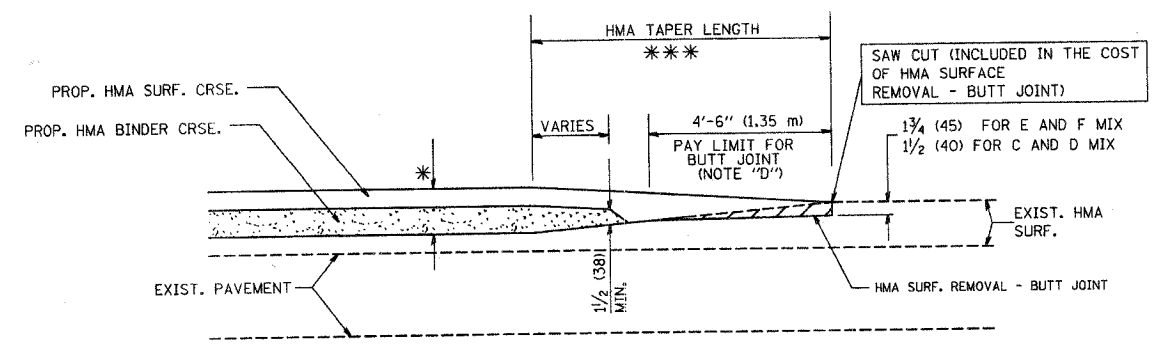


OPTION 1

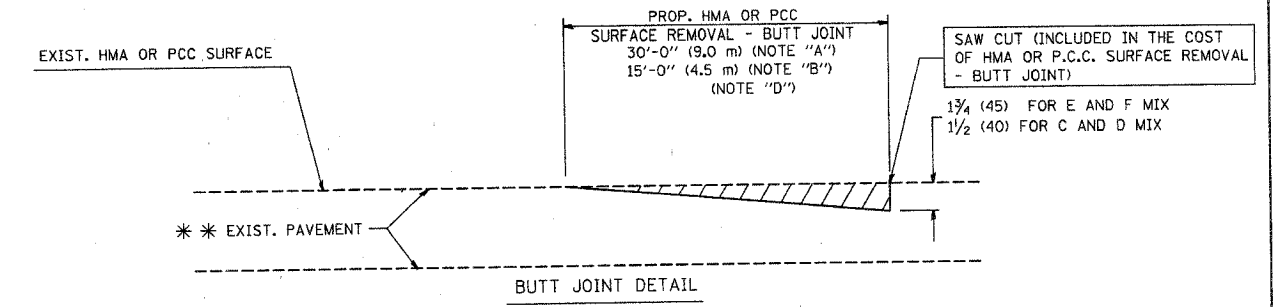


OPTION 2

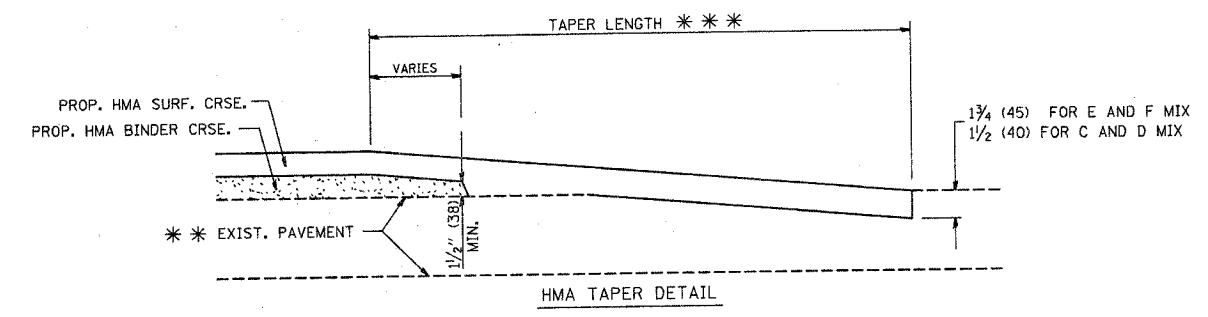
TYPICAL TEMPORARY RAMP



TYPICAL BUTT JOINT AND HMA TAPER FOR MILLING AND RESURFACING



BUTT JOINT DETAIL



HMA TAPER DETAIL

TYPICAL BUTT JOINT AND HMA TAPER FOR RESURFACING ONLY

*** PC CONCRETE, HMA OR HMA RESURFACED PAVEMENT.

NOTES

- A: MAINLINE ROADWAYS AND MAJOR SIDE ROADS.
- B: MINOR SIDE ROADS.
- C: THE TEMP. RAMP SHALL BE CONSTRUCTED IMMEDIATELY UPON REMOVAL OF THE EXISTING HMA SURFACE.
- D: THE BUTT JOINT SHALL BE CONSTRUCTED IMMEDIATELY PRIOR TO PLACING THE PROPOSED HMA COURSES.
- E: TAPER THE TEMP. RAMP AT A RATE OF 3'-0" (900 mm) PER 1 INCH (25 mm) OF MILLING THICKNESS.
- F: INSTALLATION AND REMOVAL OF THE 4'-6" (1.35 m) TEMP. RAMP IS INCLUDED IN COST OF HMA SURFACE REMOVAL - BUTT JOINT
- G: SEE ARTICLE 406.08 AND 406.14 OF THE STANDARD SPECIFICATIONS FOR "HMA AND/OR PCC SURFACE REMOVAL, BUTT JOINT".
- * SEE TYPICAL SECTIONS FOR MILLING THICKNESS.
- *** 20'-0" (6.1 m) PER 1 (25) RESURFACING (NOTE "A")
10'-0" (3.0 m) PER 1 (25) RESURFACING (NOTE "B")

ALL DIMENSIONS ARE IN INCHES (MILLIMETERS) UNLESS OTHERWISE SHOWN.

BASIS OF PAYMENT:

THE BUTT JOINT WILL BE PAID FOR AT THE CONTRACT UNIT PRICE PER SQUARE YARD (SQUARE METER) FOR "HOT-MIX ASPHALT SURFACE REMOVAL - BUTT JOINT" OR FOR "PORTLAND CEMENT CONCRETE SURFACE REMOVAL - BUTT JOINT".

REVISIONS	
NAME	DATE
M. DE YONG	6-13-90
M. DE YONG	7-3-90
M. DE YONG	3-27-92
R. SHAH	09/09/94
R. SHAH	10/25/94
A. ABBAS	03/21/97
M. GOMEZ	04/06/01
R. BORO	01/01/07

ILLINOIS DEPARTMENT OF TRANSPORTATION

BUTT JOINT AND HMA TAPER DETAILS

SCALE: VERT. NONE
HORIZ. 1" = 20'
PLOT DATE: 10/31/2006

DRAWN BY
CHECKED BY
BD400-05 (VI-BD32)
REVISION DATE: 01/01/07

DATE = 10/31/2006
DRAWN BY = M. De Yong
PLOT SCALE = 1" = 20'
USER NAME = jing