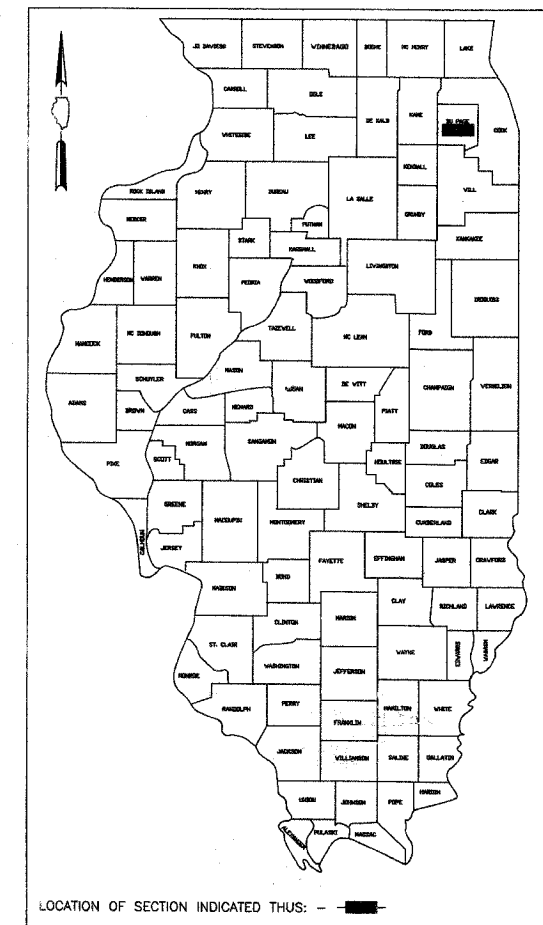


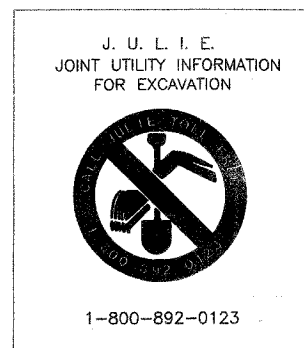
F. A. U. NO.	SECTION	COUNTY	TOTAL SHEETS	SHEET NO.
2593	02-00092-00-WR	DU PAGE	49	1
FED. ROAD DIST. NO. 1		ILLINOIS	FED. AID PROJECT	
CONTRACT NO. 83936				

STATE OF ILLINOIS
DEPARTMENT OF TRANSPORTATION
DIVISION OF HIGHWAYS
PLANS FOR PROPOSED
F.A.U. ROUTE 2593 (WOODWARD AVEVUE)
63rd STREET (FAU 1518) TO SOUTH VILLAGE LIMITS
ROADWAY WIDENING AND RESURFACING
SECTION: 02-00092-00-WR
PROJECT: M-8003(814)
JOB: C-91-288-07
VILLAGE OF DOWNERS GROVE
DU PAGE COUNTY

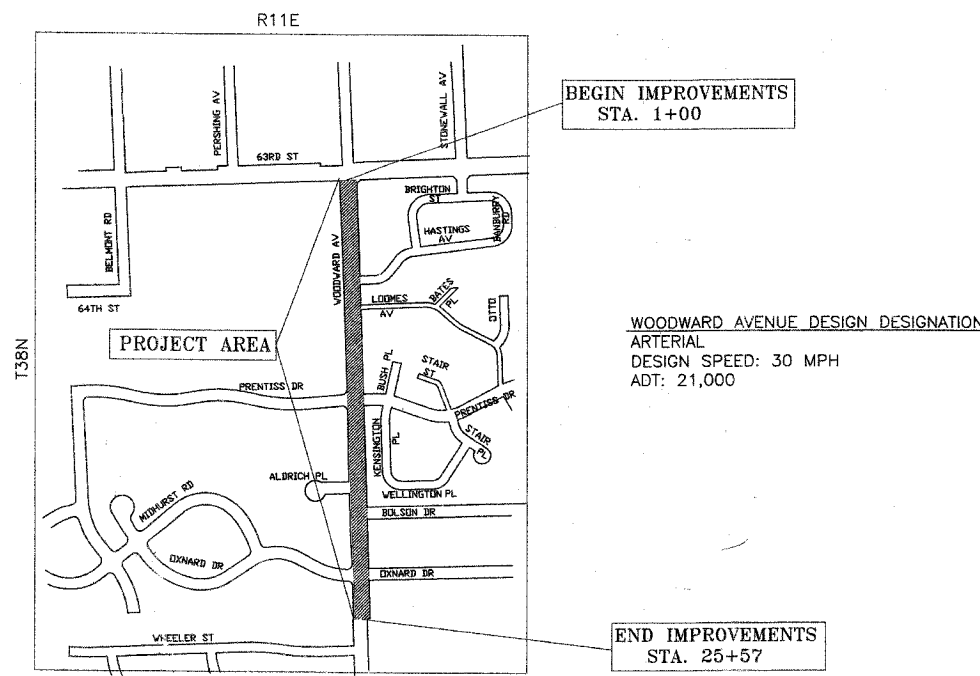


INDEX OF SHEETS
SHEET NO. DESCRIPTION

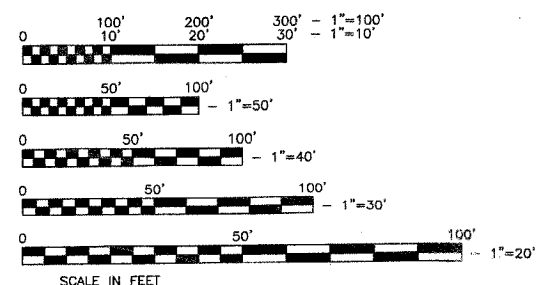
- 1 COVER SHEET & LOCATION MAP
- 2-3 SUMMARY OF QUANTITIES
- 4 GENERAL NOTES & IDOT STANDARDS
- 5 TYPICAL SECTIONS
- 6 WOODWARD AVE. EXISTING & PROPOSED (STA. 1+00 TO STA. 5+00)
- 7 WOODWARD AVE. EXISTING & PROPOSED (STA. 5+00 TO STA. 10+00)
- 8 WOODWARD AVE. EXISTING & PROPOSED (STA. 10+00 TO STA. 15+50)
- 9 WOODWARD AVE. EXISTING & PROPOSED (STA. 15+50 TO STA. 20+50)
- 10 WOODWARD AVE. EXISTING & PROPOSED (STA. 20+50 TO STA. 25+57)
- 11 WOODWARD AVENUE PROFILES (STA. 1+00 TO STA. 10+50)
- 12 WOODWARD AVENUE PROFILES (STA. 10+50 TO STA. 20+30)
- 13 WOODWARD AVENUE PROFILES (STA. 20+30 TO STA. 25+57)
- 14 WOODWARD AVE. STRIPING (STA. 1+00 TO STA. 5+00)
- 15 WOODWARD AVE. STRIPING (STA. 5+00 TO STA. 10+00)
- 16 WOODWARD AVE. STRIPING (STA. 10+00 TO STA. 15+50)
- 17 WOODWARD AVE. STRIPING (STA. 15+50 TO STA. 20+50)
- 18 WOODWARD AVE. STRIPING (STA. 20+50 TO STA. 25+57)
- 19 TEMPORARY TRAFFIC SIGNAL PLAN
- 20 PROPOSED TRAFFIC SIGNAL PLAN
- 21 PROPOSED CABLE PLAN, SERVICES, & SCHEDULE OF QUANTITIES
- 22 MAST ARM MOUNTED STREET SIGNS
- 23-26 STANDARD TRAFFIC SIGNAL DETAILS
- 27-42 LIGHTING
- 43 CONSTRUCTION DETAILS
- 44-45 CROSS SECTIONS
- 46 IDOT DISTRICT ONE TYPICAL PAVEMENT MARKING DETAIL
- 47 BUTT JOINT AND BITUMINOUS TAPER DETAILS
- 48 IDOT DRIVEWAY DETAILS DISTANCE BETWEEN ROW AND FACE OF CURB
- 49 TRAFFIC CONTROL AND PROTECTION AT TURN BAYS (TO REMAIN OPEN TO TRAFFIC)



ASSOCIATE FIELD ENGINEER: KEVIN STALLWORTH (847) 705-4169



LOCATION MAP
 LENGTH OF PROJECT=2,457 FT. (0.467 MILE)



FULL SIZE PLANS HAVE BEEN PREPARED USING STANDARD ENGINEERING SCALES. REDUCED SIZE PLANS WILL NOT CONFORM TO STANDARD SCALES. IN MAKING MEASUREMENTS ON REDUCED PLANS, THE ABOVE SCALES CAN BR USED

Contract No. 83936

STATE OF ILLINOIS
 DEPARTMENT OF TRANSPORTATION
 DIVISION OF HIGHWAYS
 APPROVED November 2, 2007
Michael D. Milette
 Asst. DIRECTOR OF PUBLIC WORKS, VILLAGE OF DOWNERS GROVE
 PASSED NOVEMBER 9, 2007
Christophe H. Hoot
 DIVISION ENGINEER OF LOCAL ROADS AND STREETS
 RELEASING FOR BID BASED ON LIMITED REVIEW Nov. 6, 2007
Diane O'Keefe
 DEPUTY DIRECTOR OF HIGHWAYS
 REGION ONE ENGINEER



Michael D. Milette, P.E.
 #002-047313
 My License Expires 11/30/07
 As an official act as Assistant Director of Public Works, I hereby seal these plans.