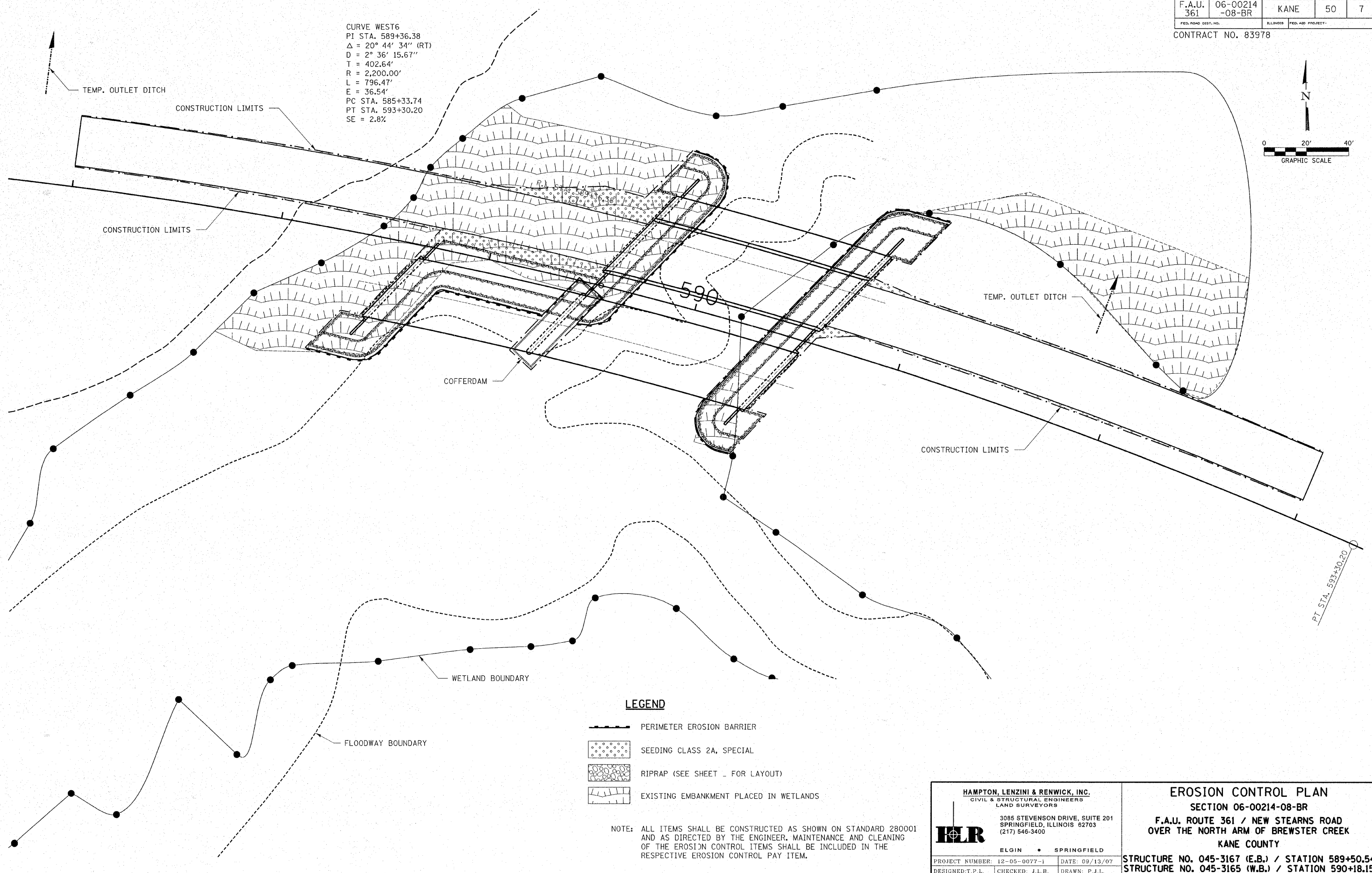
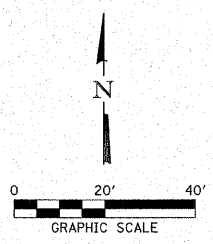



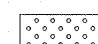

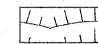
ROUTE NO. F.A.U. 361	SECTION 06-00214 -08-BR	COUNTY KANE	SHEET 50	TOTAL SHEETS 7
FED. ROAD DIST. NO.		ILLINOIS	FED. AID PROJECT	

CONTRACT NO. 83978

CURVE WEST6
 PI STA. 589+36.38
 $\Delta = 20^\circ 44' 34''$ (RT)
 $D = 2^\circ 36' 15.67''$
 $T = 402.64'$
 $R = 2,200.00'$
 $L = 796.47'$
 $E = 36.54'$
 PC STA. 585+33.74
 PT STA. 593+30.20
 SE = 2.8%



LEGEND

-  PERIMETER EROSION BARRIER
-  SEEDING CLASS 2A, SPECIAL
-  RIPRAP (SEE SHEET - FOR LAYOUT)
-  EXISTING EMBANKMENT PLACED IN WETLANDS

NOTE: ALL ITEMS SHALL BE CONSTRUCTED AS SHOWN ON STANDARD 280001 AND AS DIRECTED BY THE ENGINEER. MAINTENANCE AND CLEANING OF THE EROSION CONTROL ITEMS SHALL BE INCLUDED IN THE RESPECTIVE EROSION CONTROL PAY ITEM.

HAMPTON, LENZINI & RENWICK, INC.
 CIVIL & STRUCTURAL ENGINEERS
 LAND SURVEYORS

3085 STEVENSON DRIVE, SUITE 201
 SPRINGFIELD, ILLINOIS 62703
 (217) 546-3400

HLR

ELGIN • SPRINGFIELD

PROJECT NUMBER: 12-05-0077-1 DATE: 09/13/07
 DESIGNED: T.P.L. CHECKED: J.L.B. DRAWN: P.J.L.

EROSION CONTROL PLAN
 SECTION 06-00214-08-BR
 F.A.U. ROUTE 361 / NEW STEARNS ROAD
 OVER THE NORTH ARM OF BREWSTER CREEK
 KANE COUNTY

STRUCTURE NO. 045-3167 (E.B.) / STATION 589+50.54
 STRUCTURE NO. 045-3165 (W.B.) / STATION 590+18.15