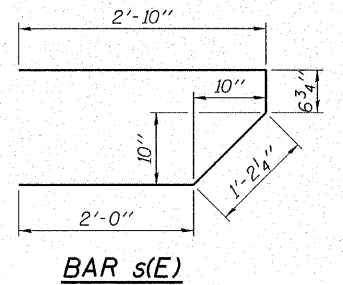


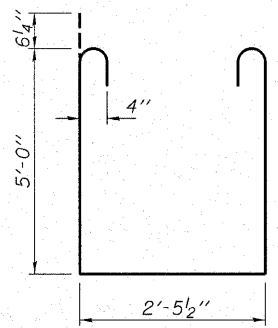
**DIAPHRAGM ELEVATION AT EAST ABUTMENT**  
East Abutment Shown - West Abutment Opposite Hand except as noted

**MIN. BAR LAP**  
#6 bars = 2'-7"

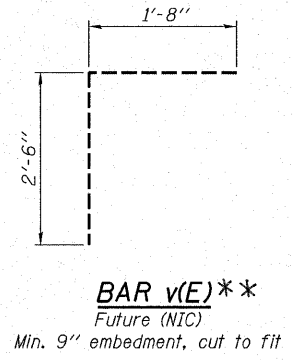
Notes: See Sheet 7 of 18 W.B. for Superstructure Bill of Material.  
Concrete in diaphragms is included with "Concrete Superstructure" on Sheet 7 of 18 W.B.



**BAR s(E)**

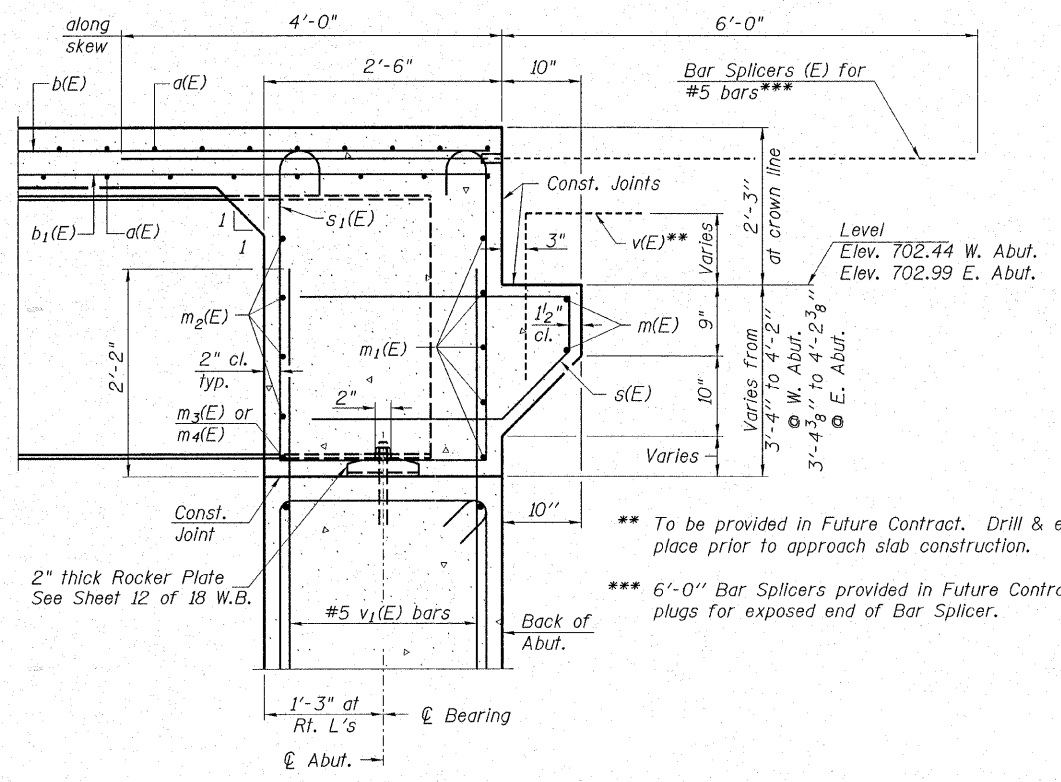


**BAR s1(E)**



**BAR v(E)\*\***

Future (NIC)  
Min. 9" embedment, cut to fit



**SECTION A-A**  
@ Rt. L's

\*\* To be provided in Future Contract. Drill & epoxy grout in place prior to approach slab construction.  
\*\*\* 6'-0" Bar Splicers provided in Future Contract. Provide plastic plugs for exposed end of Bar Splicer.

**HAMPTON, LENZINI & RENWICK, INC.**  
CIVIL & STRUCTURAL ENGINEERS  
LAND SURVEYORS  
3085 STEVENSON DRIVE, SUITE 201  
SPRINGFIELD, ILLINOIS 62703  
(217) 546-3400

**ELGIN • SPRINGFIELD**

PROJECT NUMBER: 12-05-0077-1    DATE: 09/20/07  
DESIGNED: T.P.L.    CHECKED: J.L.B.    DRAWN: P.J.L.

**SUPERSTRUCTURE DETAILS**  
SECTION 06-00214-08-BR  
F.A.U. ROUTE 361 / NEW STEARNS ROAD  
OVER THE NORTH ARM OF BREWSTER CREEK  
KANE COUNTY

**STRUCTURE NO. 045-3165 (W.B.) / STATION 590+18.15**