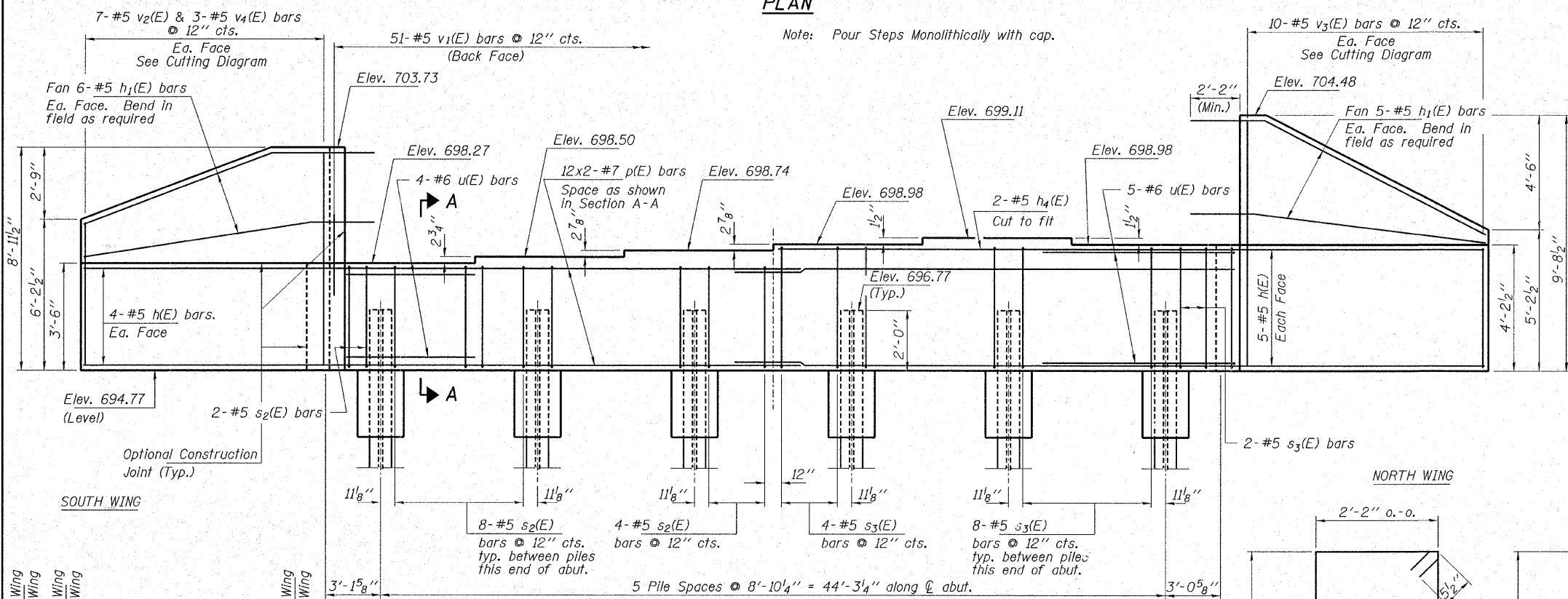


PLAN

Note: Pour Steps Monolithically with cap.



ELEVATION

(West Abutment looking West)

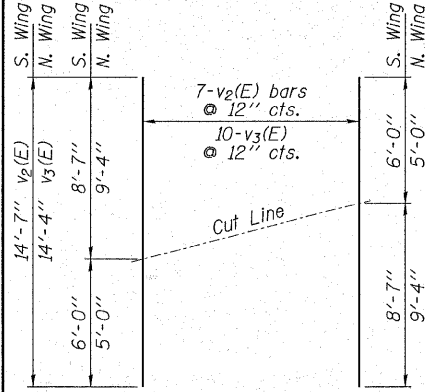
PILE DATA

Type and Size.....Steel HP12x74
 Nominal Req'd Bearing.....589 Kips/Pile
 Allowable Resistance Available.....196 Kips/Pile
 Est. Length.....60 Ft/Pile
 No. of Production Piles.....5
 No. of Test Piles.....1

Notes: The Steel H-Piles shall be according to AASHTO M270 Grade 50.

The test pile shall be driven to 110 percent of the Nominal Required Bearing indicated in the pile data information.

See Sheet 16 of 18 W.B. for Pile Details.

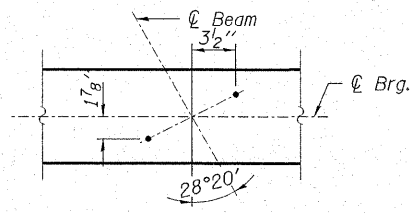


FIELD CUTTING DIAGRAM

Order v2(E) & v3(E) full length. Cut as shown and use remainder of bars in opposite face.

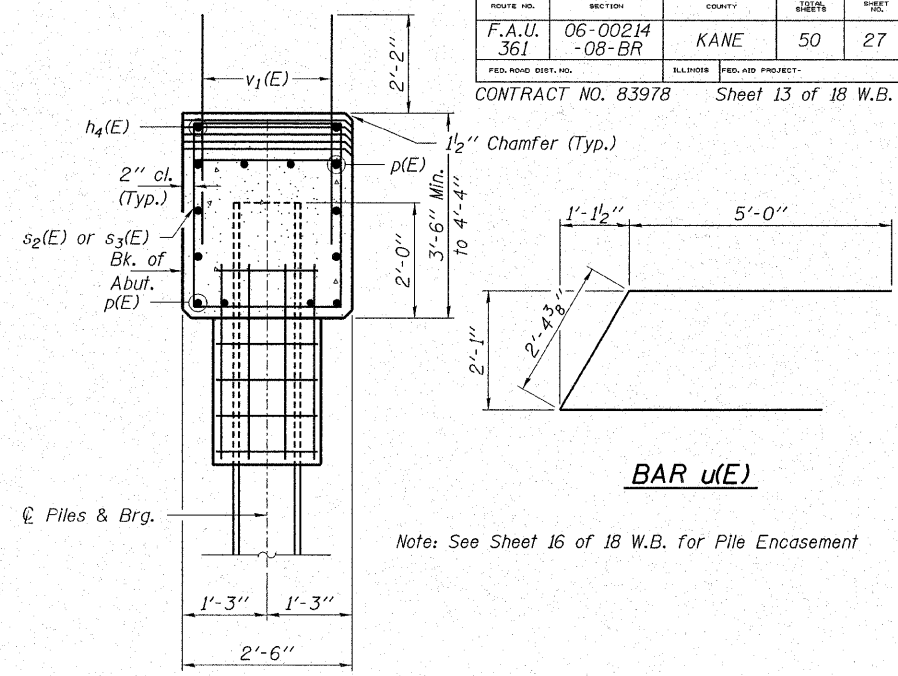
MIN. BAR LAPS

#5 = 2'-2"
 #7 = 4'-10"



TYP. ANCHOR BOLT LOCATIONS

Note: Space reinforcement in the cap to miss anchor bolts.



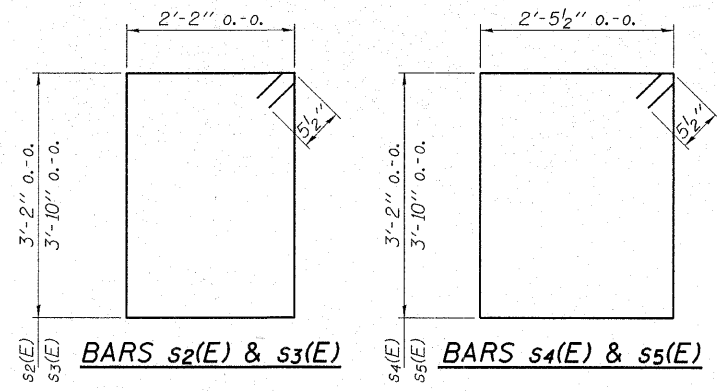
SECTION A-A

Note: See Sheet 16 of 18 W.B. for Pile Encasement

BILL OF MATERIAL WEST ABUT.

BAR	NO.	SIZE	LENGTH	SHAPE
h(E)	18	#5	12'-0"	—
h1(E)	22	#5	13'-1"	—
h4(E)	2	#5	24'-10"	—
p(E)	24	#7	27'-5"	—
s2(E)	22	#5	11'-7"	□
s3(E)	22	#5	12'-11"	□
s4(E)	1	#5	12'-2"	□
s5(E)	1	#5	13'-6"	□
u(E)	9	#6	12'-5"	—
v1(E)	97	#5	4'-4"	—
v2(E)	7	#5	14'-7"	—
v3(E)	10	#5	14'-4"	—
v4(E)	6	#5	8'-9"	—
Concrete Structures			Cu. Yd.	24.3
Reinforcement Bars, Epoxy Coated			Pound	3,430
Furnishing Steel Piles HP 12x74			Foot	300
Driving Piles			Foot	300
Test Pile Steel HP 12x74			Each	1
Concrete Encasement			Cu. Yd.	2.1

Bars indicated thus 12x2-#7 etc. indicates 12 lines of bars with 2 lengths per line.



HAMPTON, LENZINI & RENWICK, INC.
 CIVIL & STRUCTURAL ENGINEERS
 LAND SURVEYORS
 3085 STEVENSON DRIVE, SUITE 201
 SPRINGFIELD, ILLINOIS 62703
 (217) 646-3400
 ELGIN • SPRINGFIELD
 PROJECT NUMBER: 12-05-0077-1 DATE: 09/20/07
 DESIGNED: T.P.L. CHECKED: J.L.B. DRAWN: P.J.L.

WEST ABUTMENT
 SECTION 06-00214-08-BR
 F.A.U. ROUTE 361 / NEW STEARNS ROAD
 OVER THE NORTH ARM OF BREWSTER CREEK
 KANE COUNTY
 STRUCTURE NO. 045-3165 (W.B.) / STATION 590+18.15