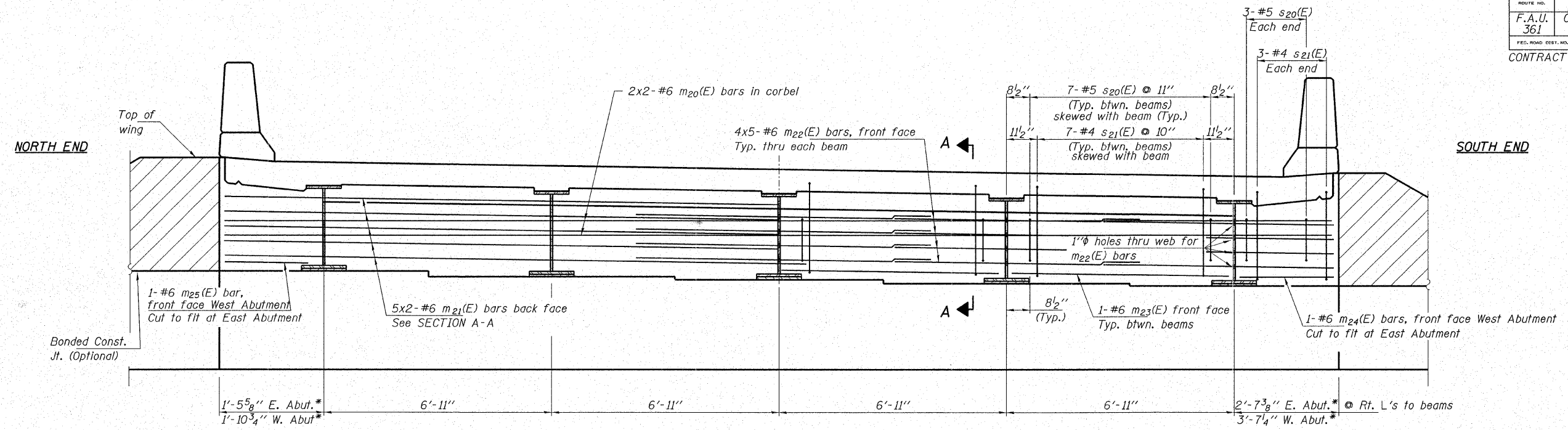


ROUTE NO. F.A.U. 361	SECTION 06-00214 -08-BR	COUNTY KANE	SHEET 50	SHEET 40
FED. ROAD DIST. NO.		ILLINOIS	FED. AID PROJECT-	
CONTRACT NO. 83978			Sheet 8 of 18 E.B.	



DIAPHRAGM AT ABUTMENT

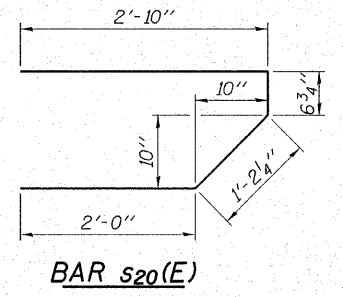
East Abutment shown - West Abutment Opposite Hand except as noted

Notes: Reinforcement bars in diaphragms are billed with superstructure on Sheet 6 of 18 E.B.
Concrete in diaphragms is included with "Concrete Superstructure" on Sheet 6 of 18 E.B.

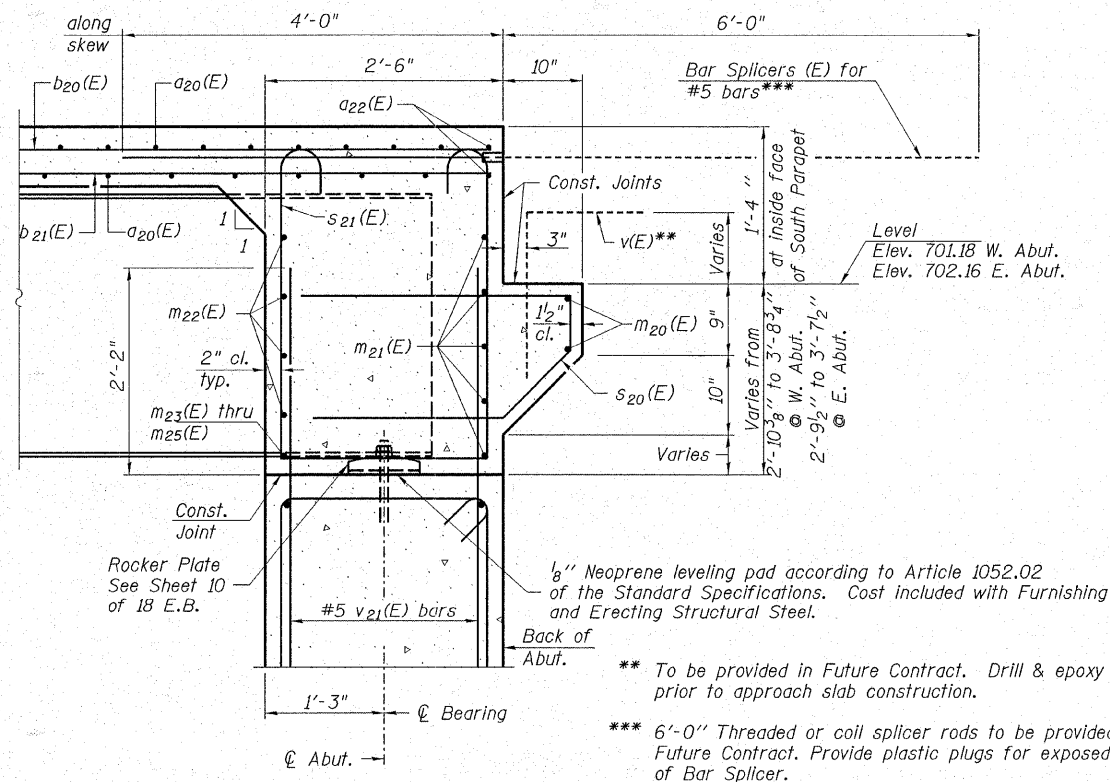
* At face of Abutment

MIN. BAR LAPS

#6 bars = 2'-7"



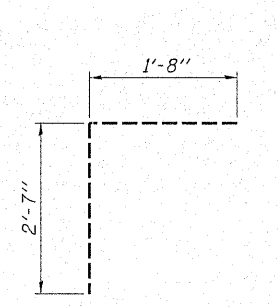
BAR s20(E)



SECTION A-A
© Rf. L's

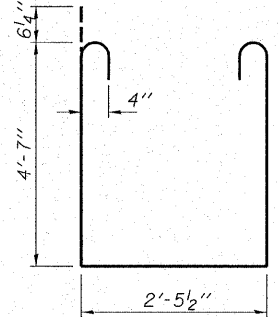
** To be provided in Future Contract. Drill & epoxy in place prior to approach slab construction.

*** 6'-0" Threaded or coil splicer rods to be provided in Future Contract. Provide plastic plugs for exposed end of Bar Splicer.



BAR v(E)**

Future (NIC)
Min. 9" embedment, cut to fit



BAR s21(E)

Note:
For Superstructure Bill of Material See Sheet 6 of 18 E.B.

HAMPTON, LENZINI & RENWICK, INC.
CIVIL & STRUCTURAL ENGINEERS
LAND SURVEYORS
3085 STEVENSON DRIVE, SUITE 201
SPRINGFIELD, ILLINOIS 62703
(217) 546-3400

ELGIN • SPRINGFIELD

PROJECT NUMBER: 12-05-0077-1 DATE: 09/20/07
DESIGNED: T.P.L. CHECKED: J.L.B. DRAWN: P.J.L.

SUPERSTRUCTURE DETAILS
SECTION 06-00214-08-BR
F.A.U. ROUTE 361 / NEW STEARNS ROAD
OVER THE NORTH ARM OF BREWSTER CREEK
KANE COUNTY

STRUCTURE NO. 045-3167 (E.B.) / STATION 590+50.50