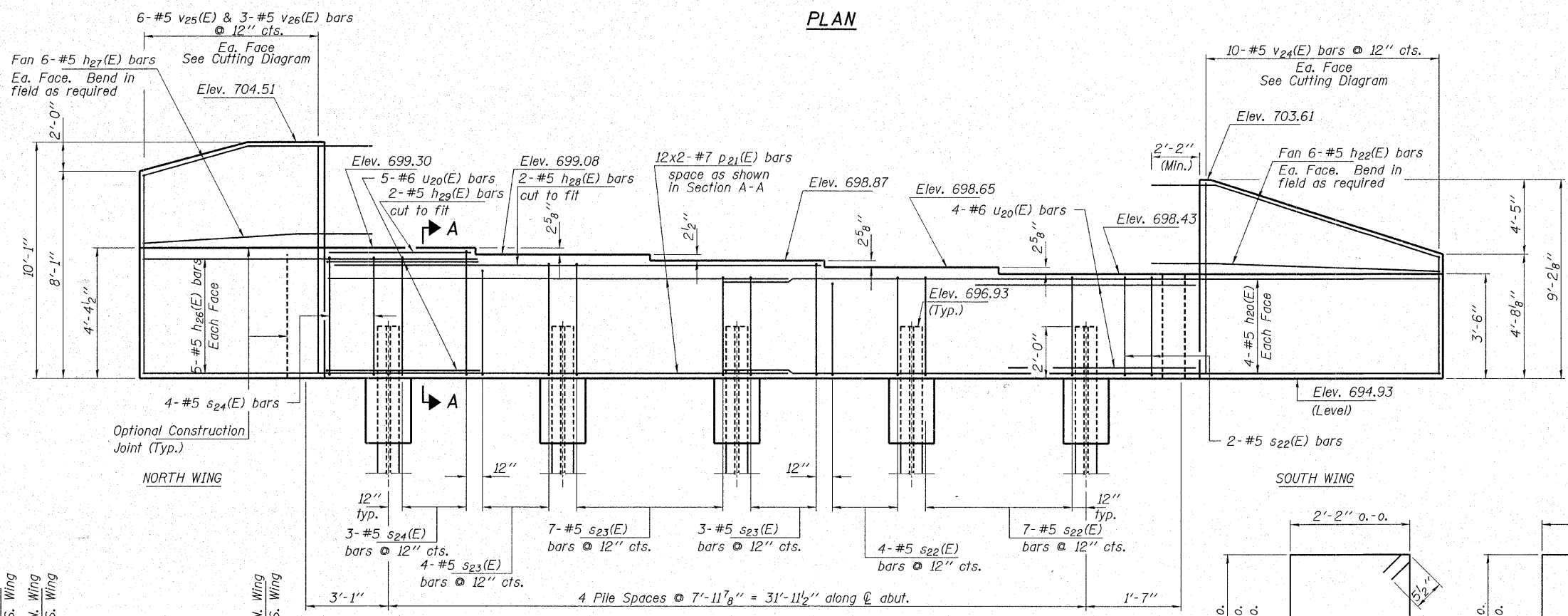


Notes:
See Sheet 15 of 18 E.B. for Pile Encasement.
Four Steps Monolithically with cap.
Space reinforcement in cap to miss anchor bolts.

PLAN

SECTION A-A



BILL OF MATERIAL EAST ABUT.

BAR	NO.	SIZE	LENGTH	SHAPE
h20(E)	8	#5	12'-0"	—
h22(E)	12	#5	13'-1"	—
h26(E)	10	#5	8'-7"	—
h27(E)	12	#5	9'-1"	—
h28(E)	2	#5	23'-4"	—
h29(E)	2	#5	7'-4"	—
p21(E)	24	#7	20'-7"	—
s22(E)	13	#5	11'-7"	□
s23(E)	14	#5	12'-3"	□
s24(E)	7	#5	13'-3"	□
s25(E)	1	#5	12'-2"	□
s26(E)	1	#5	13'-10"	□
u20(E)	9	#6	12'-6"	—
v21(E)	75	#5	4'-4"	—
v24(E)	10	#5	13'-3"	—
v25(E)	6	#5	17'-6"	—
v26(E)	6	#5	9'-9"	—
Concrete Structures			Cu. Yd.	18.3
Reinforcement Bars, Epoxy Coated			Pound	2,820
Furnishing Steel Piles HP 12x63			Foot	176
Driving Piles			Foot	176
Test Pile Steel HP 12x63			Each	1
Concrete Encasement			Cu. Yd.	1.7

Bars indicated thus 12x2-#7 etc. indicates 12 lines of bars with 2 lengths per line.

ELEVATION
(East Abutment looking East)

PILE DATA

Type and Size.....Steel HP12x63
Nominal Req'd Bearing.....497 Kips/Pile
Allowable Resistance Available.....166 Kips/Pile
Est. Length.....44 Ft/Pile
No. of Production Piles.....4
No. of Test Piles.....1

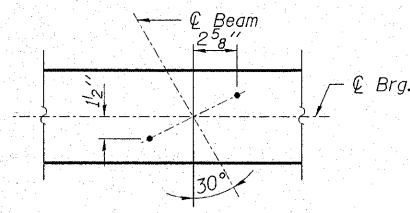
Notes: The Steel H-Piles shall be according to AASHTO M270 Grade 50.

The test pile shall be driven to 110 percent of the Nominal Required Bearing indicated in the pile data information.

See Sheet 15 of 18 E.B. for Pile Details.

MIN. BAR LAPS

#5 = 2'-2"
#7 = 4'-10"



TYP. ANCHOR BOLT LOCATIONS

FIELD CUTTING DIAGRAM

Order v24(E) & v25(E) full length. Cut as shown and use remainder of bars in opposite face.

HAMPTON, LENZINI & RENWICK, INC.
CIVIL & STRUCTURAL ENGINEERS
LAND SURVEYORS
3085 STEVENSON DRIVE, SUITE 201
SPRINGFIELD, ILLINOIS 62703
(217) 546-3400

ELGIN • SPRINGFIELD

PROJECT NUMBER: 12-05-0077-1 DATE: 09/20/07
DESIGNED: T.P.L. CHECKED: J.L.B. DRAWN: P.J.L.

EAST ABUTMENT
SECTION 06-00214-08-BR
F.A.U. ROUTE 361 / NEW STEARNS ROAD
OVER THE NORTH ARM OF BREWSTER CREEK
KANE COUNTY
STRUCTURE NO. 045-3167 (E.B.) / STATION 590+50.50