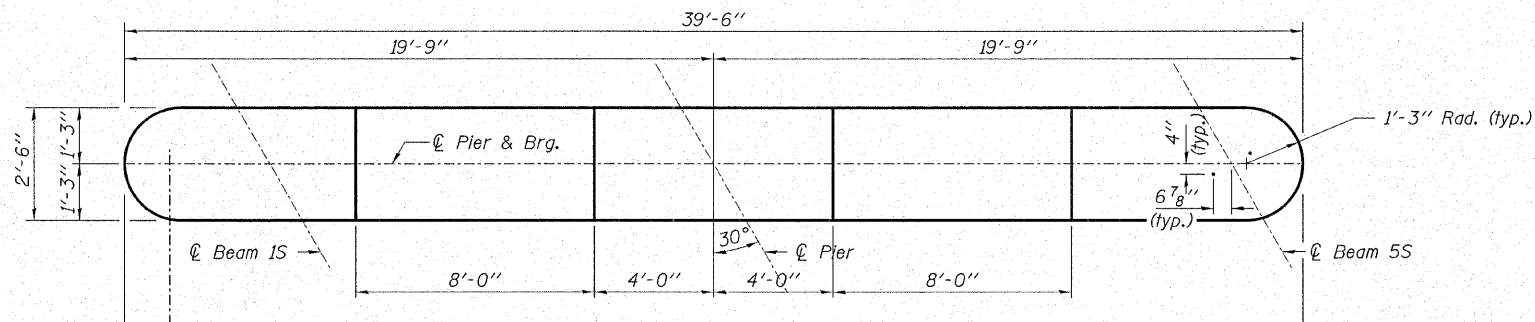
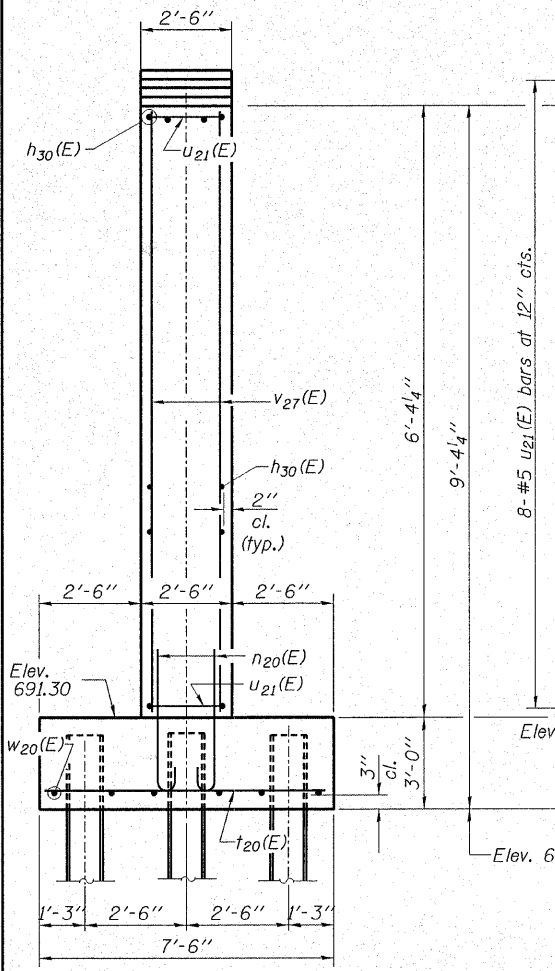


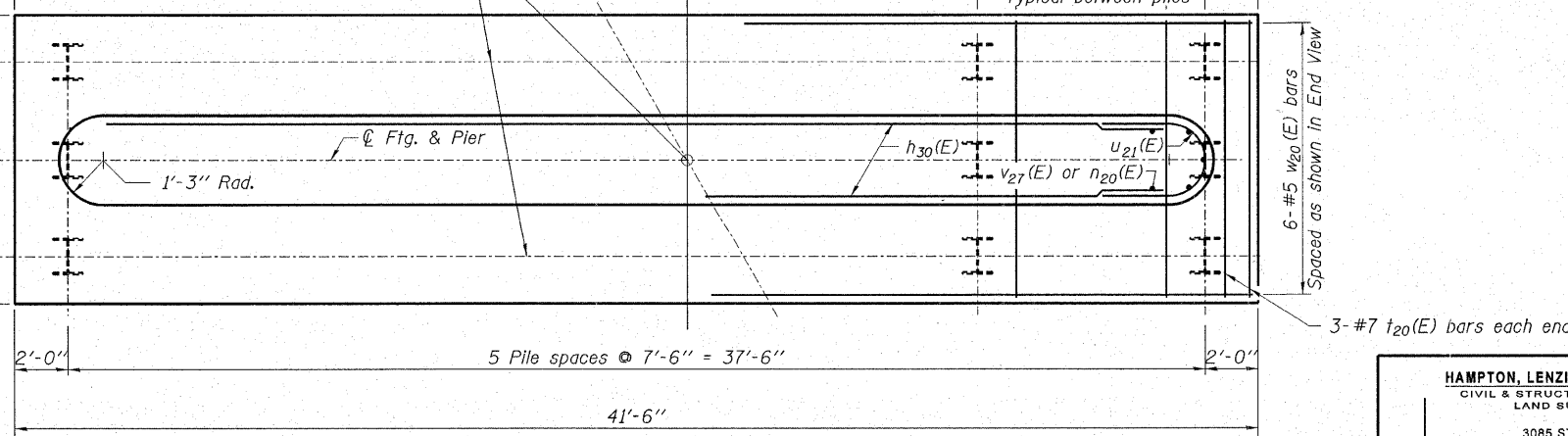
Notes:
 Space reinforcement in top of wall to miss anchor bolts.
 Pour steps monolithically with cap.



TOP PLAN



END VIEW

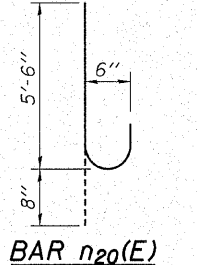


FOOTING PLAN

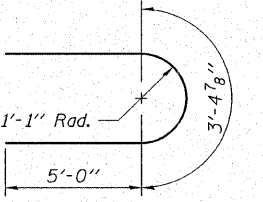
PILE DATA

Type.....Steel HP12x63
 Nominal Required Bearing.....270 kips
 Allowable Resistance Available...88 kips/pile
 Estimated Length.....42 Ft/Pile
 No. Production Piles.....17
 No. Test Piles.....1

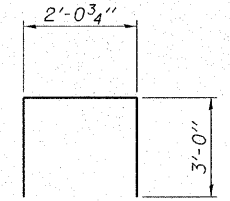
The Steel H-piles shall be according to AASHTO M270 Grade 50.
 The test pile shall be driven to 110 percent of the Nominal Required Bearing indicated in the pile data information.
 See Sheet 15 of 18 E.B. for details.



BAR n20(E)



BAR u21(E)



BAR u22(E)

MIN. BAR LAPS
 #5 = 2'-2"
 #6 = 2'-7"

BILL OF MATERIAL

Bar	No.	Size	Length	Shape
h30(E)	16	#5	37'-0"	—
h31(E)	2	#5	22'-3"	—
h32(E)	2	#5	6'-3"	—
n20(E)	82	#6	6'-2"	U
t20(E)	41	#7	7'-2"	—
u21(E)	15	#5	13'-5"	U
u22(E)	24	#5	8'-1"	U
v27(E)	82	#6	6'-0"	—
w20(E)	6	#5	41'-2"	—
Structure Excavation			Cu. Yd.	2.6
Cofferdam Excavation			Cu. Yd.	155.0
Cofferdams			Each	1
Concrete Structures			Cu. Yd.	58.9
Seal Coat Concrete			Cu. Yd.	58.1
Reinforcement Bars, Epoxy Coated			Pound	3,450
Furnishing Steel Piles, HP 12X63			Foot	714
Driving Piles			Foot	714
Test Pile, Steel, HP12X63			Each	1

HAMPTON, LENZINI & RENWICK, INC.
 CIVIL & STRUCTURAL ENGINEERS
 LAND SURVEYORS

3085 STEVENSON DRIVE, SUITE 201
 SPRINGFIELD, ILLINOIS 62703
 (217) 546-3400

ELGIN • SPRINGFIELD

PROJECT NUMBER: 12-05-0077-1 DATE: 09/20/07
 DESIGNED T.P.L. CHECKED: J.L.B. DRAWN: P.J.L.

PIER
SECTION 06-00214-08-BR
F.A.U. ROUTE 361 / NEW STEARNS ROAD
OVER THE NORTH ARM OF BREWSTER CREEK
KANE COUNTY

STRUCTURE NO. 045-3167 (E.B.) / STATION 590+50.50