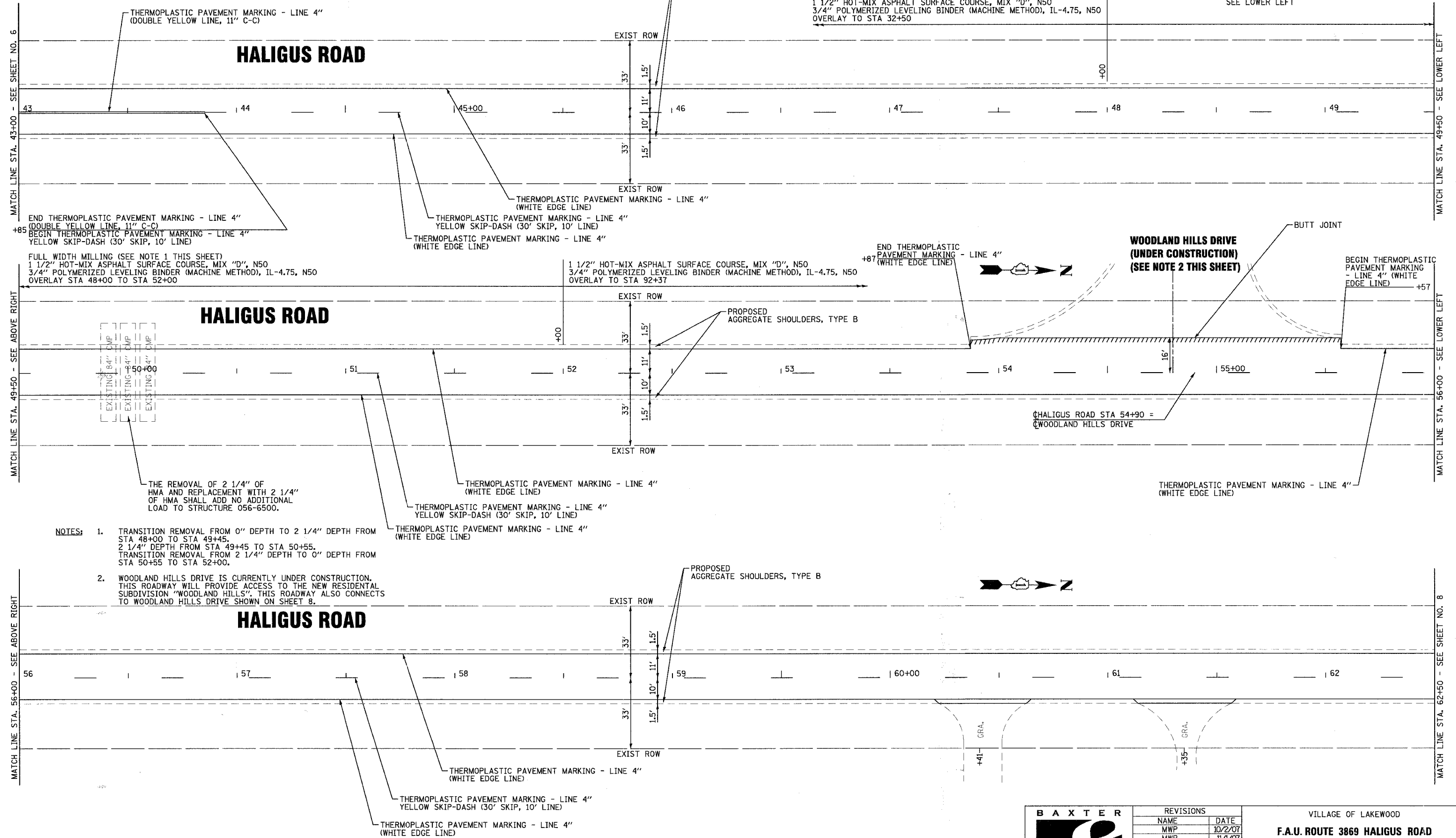
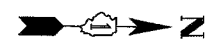


F.A.U. RTE.	SECTION	COUNTY	TOTAL SHEETS	SHEET NO.
3869	07-00009-00-RS	McHENRY	14	7
STA. 43+00		TO STA. 62+50		
FED. ROAD DIST. NO.	ILLINOIS	FED AID PROJECT		
C-91-340-07		M-8003 (840)		

CONTRACT: 83979



SEE LOWER LEFT

**WOODLAND HILLS DRIVE
(UNDER CONSTRUCTION)
(SEE NOTE 2 THIS SHEET)**

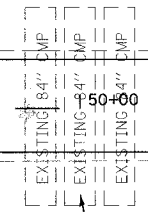
END THERMOPLASTIC PAVEMENT MARKING - LINE 4"
(DOUBLE YELLOW LINE, 11" C-C)
+85
BEGIN THERMOPLASTIC PAVEMENT MARKING - LINE 4"
YELLOW SKIP-DASH (30' SKIP, 10' LINE)

FULL WIDTH MILLING (SEE NOTE 1 THIS SHEET)
1 1/2" HOT-MIX ASPHALT SURFACE COURSE, MIX "D", N50
3/4" POLYMERIZED LEVELING BINDER (MACHINE METHOD), IL-4.75, N50
OVERLAY STA 48+00 TO STA 52+00

1 1/2" HOT-MIX ASPHALT SURFACE COURSE, MIX "D", N50
3/4" POLYMERIZED LEVELING BINDER (MACHINE METHOD), IL-4.75, N50
OVERLAY TO STA 92+37

END THERMOPLASTIC PAVEMENT MARKING - LINE 4"
(WHITE EDGE LINE)

BEGIN THERMOPLASTIC PAVEMENT MARKING - LINE 4" (WHITE EDGE LINE)



THE REMOVAL OF 2 1/4" OF HMA AND REPLACEMENT WITH 2 1/4" OF HMA SHALL ADD NO ADDITIONAL LOAD TO STRUCTURE 056-6500.

- NOTES:**
- TRANSITION REMOVAL FROM 0" DEPTH TO 2 1/4" DEPTH FROM STA 48+00 TO STA 49+45.
2 1/4" DEPTH FROM STA 49+45 TO STA 50+55.
TRANSITION REMOVAL FROM 2 1/4" DEPTH TO 0" DEPTH FROM STA 50+55 TO STA 52+00.
 - WOODLAND HILLS DRIVE IS CURRENTLY UNDER CONSTRUCTION. THIS ROADWAY WILL PROVIDE ACCESS TO THE NEW RESIDENTIAL SUBDIVISION "WOODLAND HILLS". THIS ROADWAY ALSO CONNECTS TO WOODLAND HILLS DRIVE SHOWN ON SHEET 8.



COPYRIGHT © 2007 BY BAXTER & WOODMAN, INC.
 LICENSE NO. 84-0021 - EXPIRES 4/30/2009
 ILLINOIS PROFESSIONAL ENGINEERING LICENSE NO. 052276
 11/27/2007



REVISIONS	
NAME	DATE
MWP	10/2/07
MWP	11/1/07

VILLAGE OF LAKEWOOD
F.A.U. ROUTE 3869 HALIGUS ROAD
STA 43+00 TO STA 62+50

PROJECT NO.: 070489
 SCALE: 1" = 20'
 DATE: 08/07/07

DESIGNED BY: (DJS)
 DRAWN BY: (RKM)
 CHECKED BY: (MWP)