

FOR INDEX OF SHEETS, SEE SHEET NO. 2

FOR INDEX OF HIGHWAY STANDARDS, SEE SHEET NO. 2

PROJECT LOCATED IN THE VILLAGE OF LAKEWOOD

PROJECT NUMBER: M-8003(840)  
F.A.U. ROUTE 3869 HALIGUS ROAD  
END RESURFACING  
STA. 92 + 37

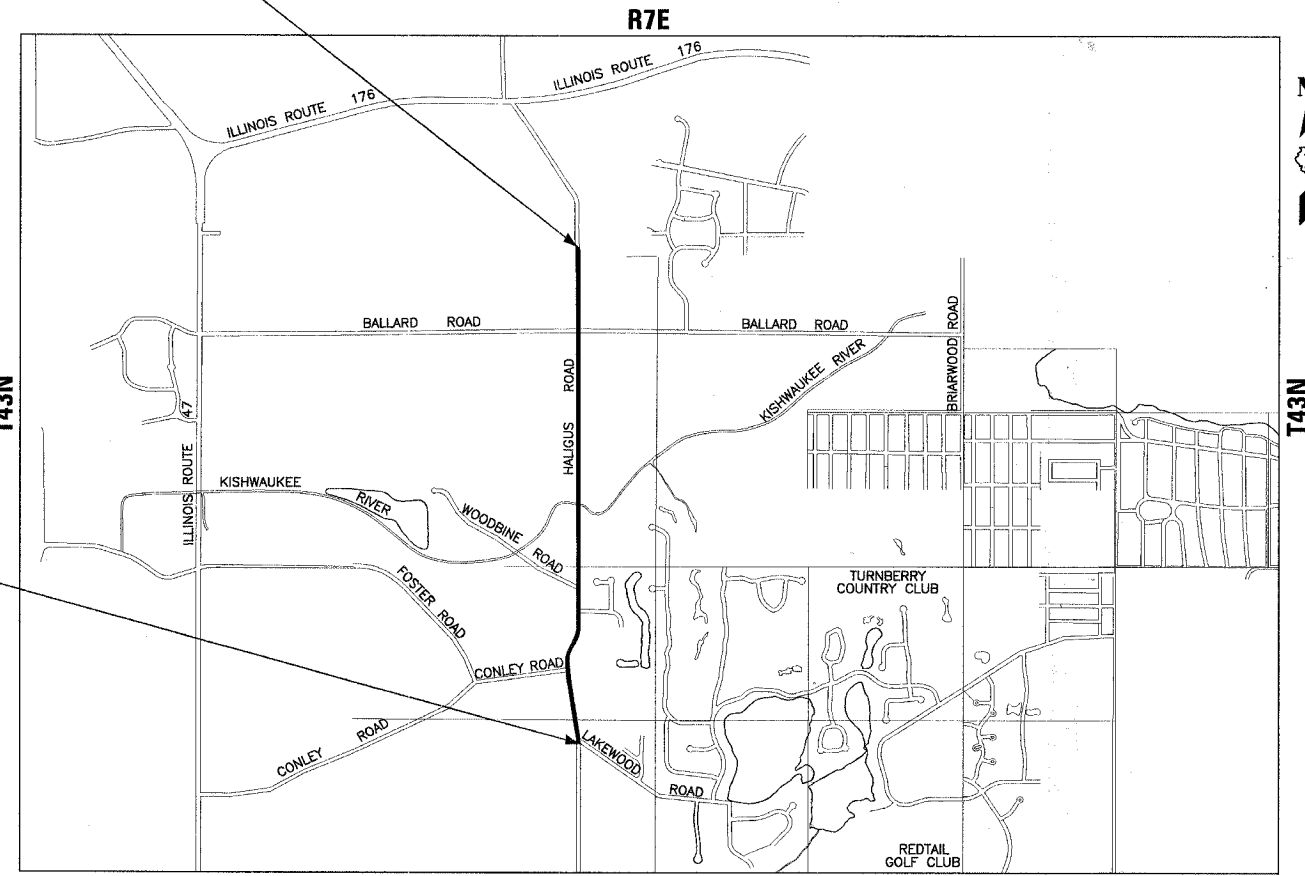
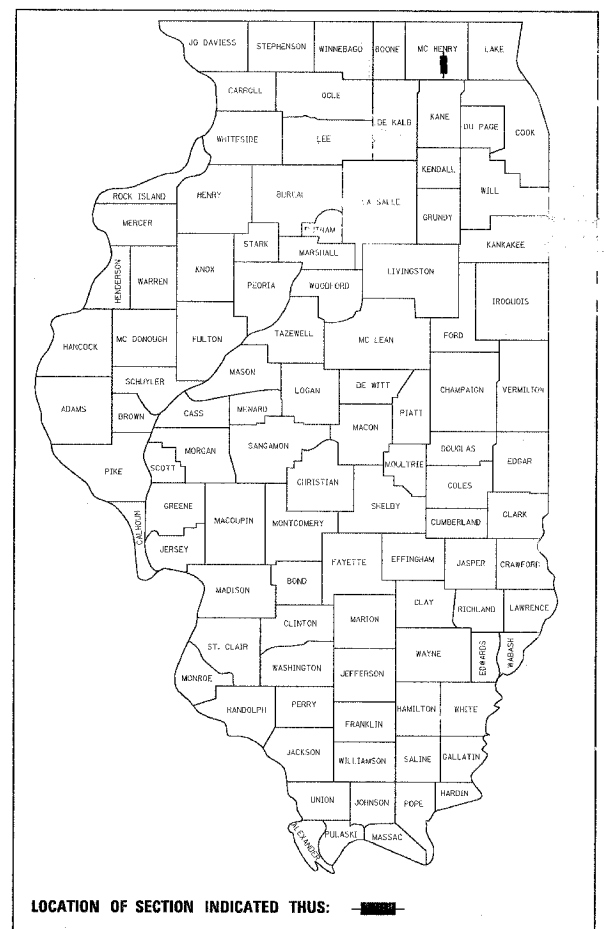
PROJECT NUMBER: M-8003(840)  
F.A.U. ROUTE 3869 HALIGUS ROAD  
BEGIN RESURFACING  
STA. 9 + 20

STATE OF ILLINOIS  
DEPARTMENT OF TRANSPORTATION  
DIVISION OF HIGHWAYS

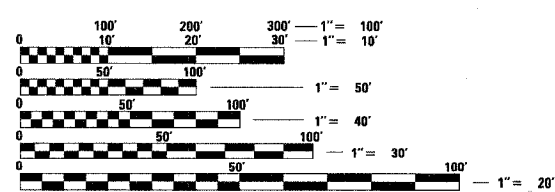
PLANS FOR PROPOSED  
FEDERAL AID PROJECT  
F.A.U. ROUTE 3869 HALIGUS ROAD  
FROM LAKEWOOD ROAD TO NORTH VILLAGE LIMITS  
RESURFACING

PROJECT NO.: M-8003 (840)  
SECTION 07-00009-00-RS  
JOB NO: C-91-340-07  
VILLAGE OF LAKEWOOD  
MCHENRY COUNTY

LOCATION MAP



R7E  
GRAFTON TOWNSHIP  
SCALE 1" = 1500'  
GROSS LENGTH OF IMPROVEMENT = 8,317 LF OR 1.575 MILES  
NET LENGTH OF IMPROVEMENT = 8,317 LF OR 1.575 MILES



FULL SIZE PLANS HAVE BEEN PREPARED USING STANDARD ENGINEERING SCALES. REDUCED SIZED PLANS WILL NOT CONFORM TO STANDARD SCALES. IN MAKING MEASUREMENTS ON REDUCED PLANS, THE ABOVE SCALES MAY BE USED.

J.U.L.I.E.  
JOINT UTILITY LOCATION INFORMATION FOR EXCAVATION  
1-800-892-0123

TRAFFIC DATA  
POSTED & DESIGN SPEED LIMIT = 45 MPH  
2007 ADT = 5,000  
DESIGN DESIGNATION - 5,000(07) COLLECTOR 0.31 (B-10)

MICHAEL W. PLANT  
62-056311  
REGISTERED  
PROFESSIONAL  
ENGINEER  
OF  
STATE OF ILLINOIS  
PROJECT MANAGER  
"LICENSE EXPIRES 11-30-07"

PROJECT ENGINEER

STATE OF ILLINOIS  
DEPARTMENT OF TRANSPORTATION  
DIVISION OF HIGHWAYS  
APPROVED October 25, 2007  
Catherine Peterson  
VILLAGE OF LAKEWOOD VILLAGE ADMINISTRATOR  
PASSED NOVEMBER 5, 2007  
C. H. C. HERSHBERGER  
REGION ONE ENGINEER OF LOCAL ROADS & STREETS  
RELEASING FOR BID  
BASED ON LIMITED  
REVIEW Nov. 6, 2007  
Diane O'Keefe  
DEPUTY DIRECTOR OF  
HIGHWAYS, REGION 1 ENGINEER

PRINTED BY THE AUTHORITY  
OF THE STATE OF ILLINOIS

847-705-4169 SCHAUMBURG, IL 847-705-4169 BUREAU OF LOCAL ROADS AND STREETS: ALEX HOUSER, P.E./KEVIN STALLWORTH

CONTRACT NO: 83979  
COUNTY: MCHENRY SECTION NUMBER: 07-00009-00-RS

Burlington, Wisconsin (Crystal Lake, Illinois) DeKalb, Illinois Itasca, Illinois Mokena, Illinois Grayslake, Illinois Plainfield, Illinois Rockford, Illinois Madison, Wisconsin  
262.763.7834 815.459.1260 815.787.3111 630.773.1870 708.560.7070 847.223.5088 815.609.7425 815.489.1551 608.347.1542  
(OFFICE WHICH PREPARED PLANS)

NOT FOR BIDDING  
B&W PROJECT NO.: 070489 DATE: 08-07-2007

**GENERAL NOTES**

- ALL CONSTRUCTION SHALL BE DONE IN ACCORDANCE WITH THE DETAILS IN THE PLANS, THE SPECIAL PROVISIONS INCLUDED IN THE CONTRACT DOCUMENTS, AND THE LATEST EDITION OF THE FOLLOWING STATE OF ILLINOIS SPECIFICATIONS: "THE STANDARD SPECIFICATIONS FOR ROAD AND BRIDGE CONSTRUCTION" (REFERRED TO AS THE "STANDARD SPECIFICATIONS"), THE "SUPPLEMENTAL SPECIFICATIONS AND RECURRING SPECIAL PROVISIONS", THE "STANDARD SPECIFICATIONS FOR TRAFFIC CONTROL ITEMS", THE "MANUAL ON UNIFORM TRAFFIC CONTROL DEVICES FOR STREETS AND HIGHWAYS", THE "MANUAL OF TEST PROCEDURES FOR MATERIALS" AND THE "STANDARD SPECIFICATIONS FOR WATER AND SEWER MAIN CONSTRUCTION IN ILLINOIS".
- UTILITY LOCATIONS HAVE NOT BEEN SHOWN ON THESE PLANS. THE CONTRACTOR SHALL HAVE THE RESPECTIVE UTILITY COMPANIES FIELD LOCATE ALL THEIR FACILITIES PRIOR TO BEGINNING CONSTRUCTION. THE CONTRACTOR SHALL ALSO VERIFY THE DEPTHS OF THE EXISTING UTILITIES IF NECESSARY. ANY RELOCATION OR LOWERING OF UTILITIES SHALL BE COORDINATED BY THE CONTRACTOR
- THE CONTRACTOR SHALL BE RESPONSIBLE FOR THE PROTECTION OF ALL UNDERGROUND OR SURFACE UTILITIES EVEN THOUGH THEY MAY NOT BE SHOWN ON THE PLANS. ANY UTILITY THAT IS DAMAGED DURING CONSTRUCTION SHALL BE REPAIRED OR REPLACED AT THE CONTRACTOR'S EXPENSE TO THE SATISFACTION OF THE ENGINEER OR VILLAGE.
- THE CONTRACTOR SHALL NOTIFY THE VILLAGE PUBLIC WORKS ADMINISTRATOR AT LEAST 48 HOURS IN ADVANCE OF BEGINNING WORK TO OBTAIN VILLAGE UTILITY LOCATIONS AND SHALL COORDINATE ALL CONSTRUCTION OPERATIONS WITH THE ENGINEER.
- MATERIALS RESULTING FROM THE REMOVAL OF PAVEMENT, DRIVEWAYS, HOT-MIX ASPHALT SURFACES, ETC. SHALL BE REMOVED AT THE END OF EACH DAY TO AN APPROVED SITE. IN THE JUDGMENT OF THE VILLAGE, SHOULD IT BE NECESSARY TO REMOVE SUCH MATERIALS, THE VILLAGE WILL HAVE THE MATERIAL REMOVED AND THE CONTRACTOR WILL BE BILLED (CHARGED) ACCORDINGLY.
- THE CONTRACTOR MAY OBTAIN MUNICIPAL WATER IN BULK, AT NO CHARGE, AS LONG AS THERE IS NOT A "WATERING BAN" IN EFFECT. THE INDISCRIMINATE USE OF FIRE HYDRANTS IS STRICTLY PROHIBITED. WATER FOR CONSTRUCTION SHALL BE METERED OR OTHERWISE ACCOUNTED FOR AND A DAILY LOG MAINTAINED. THE CONTRACTOR SHALL PROVIDE THE WATER TRUCK AND DRIVER REQUIRED TO OBTAIN AND TRANSPORT THIS WATER. THE VILLAGE RESERVES THE RIGHT TO RESTRICT OR REFUSE THE USE OF VILLAGE WATER IF DEEMED NECESSARY.
- IT WILL BE THE CONTRACTOR'S RESPONSIBILITY TO NOTIFY RESIDENTS AND THE VILLAGE WHEN ACCESS TO THEIR DRIVEWAYS WILL BE TEMPORARILY CLOSED DUE DRIVEWAY REPLACEMENT. THE CONTRACTOR SHALL DISTRIBUTE NOTICES PROVIDED BY THE VILLAGE TO RESIDENTS. EVERY EFFORT SHALL BE MADE TO ACCOMMODATE ACCESS TO THESE PROPERTIES INCLUDING KNOCKING ON DOORS WHEN DRIVEWAYS ARE ABOUT TO BE CLOSED.
- THE CONTRACTOR SHALL PROTECT AND CAREFULLY PRESERVE ALL SECTION OR SUBSECTION MONUMENTS OR PROPERTY OR REFERENCE MARKERS UNTIL THE OWNERS, HIS AGENT OR AN AUTHORIZED SURVEYOR HAS WITNESSED OR OTHERWISE REFERENCED THEIR LOCATIONS.

- THE CONTRACTOR SHALL NOTIFY IDOT BUREAU OF MATERIALS (PHONE 847-705-4337) AT LEAST 24 HOURS PRIOR TO THE PLACEMENT OF HMA OR CONCRETE.
- ANY SIGNS OR MAILBOXES THAT ARE IN CONFLICT WITH THE PROPOSED CONSTRUCTION SHALL BE REMOVED AND REPLACED IN ACCORDANCE WITH VILLAGE STANDARDS AND INCLUDED IN THE COST OF THE CONTRACT. MAIL SERVICE SHALL BE MAINTAINED AT ALL TIMES.
- EXISTING PAVEMENT AND DRIVEWAY PAVEMENT TO REMAIN IN PLACE SHALL BE SAW CUT FULL DEPTH TO PROVIDE A NEAT VERTICAL FACE BETWEEN THE PROPOSED AND EXISTING AND SHALL BE INCLUDED IN THE COST OF THE CONTRACT.
- IN AREAS WHERE THE EXISTING DRIVEWAY IS TO BE REMOVED AND REPLACED, THE REMOVAL AND DISPOSAL OF ANY ADDITIONAL MATERIAL REQUIRED TO ESTABLISH THE PROPOSED DRIVEWAY SUBGRADE ELEVATION SHALL BE INCLUDED IN THE PAY ITEM HMA SURFACE REMOVAL - BUTT JOINT.
- THE CONTRACTOR SHALL PROVIDE AND INSTALL TWO (2) WEIGHTED SANDBAGS ON EACH TYPE I OR TYPE II BARRICADE USED. ONE (1) WEIGHTED SANDBAG SHALL BE PLACED ACROSS EACH BOTTOM RAIL.
- ALL CRACKS AND JOINTS SHALL BE CLEANED PRIOR TO FILLING THEM. THIS WORK SHALL BE INCLUDED IN THE ITEM "MIXTURE FOR CRACKS, JOINTS AND FLANGWAYS."
- THE PRIME COAT APPLICATION RATE SHALL BE 0.1 GAL/SY. THE MC-30 PRIME COAT APPLICATION RATE SHALL BE 0.3 GAL/SY.
- THE LOCATIONS OF THE CLASS D PATCHES SHALL BE DETERMINED BY THE ENGINEER IN THE FIELD.
- ALL AGGREGATE USED ON THIS PROJECT SHALL BE CRUSHED MATERIAL.
- THE QUANTITIES FOR PATCHING WILL NOT EXCEED THE AMOUNT LISTED IN THE SUMMARY OF QUANTITIES.
- THE DAYS PAVING OPERATION SHALL RESULT IN A SINGLE TRANSVERSE JOINT. ANY COLD LONGITUDINAL JOINTS WILL NOT BE ACCEPTED. PROVIDING A SINGLE TRANSVERSE JOINT SHALL BE ACCOMPLISHED BY PAVING ONE LANE OF SUFFICIENT LENGTH THAT WILL ALLOW FOR THE PAVING OF THE ADJACENT LANE IN THE SAME DAY.

F.A.U. RTE.	SECTION	COUNTY	TOTAL SHEETS	SHEET NO.
3869	07-00009-00-RS	McHENRY	14	2
STA.	TO STA.			
FED. ROAD DIST. NO. C-91-340-07	ILLINOIS	FED AID PROJECT M-8003 (840)		

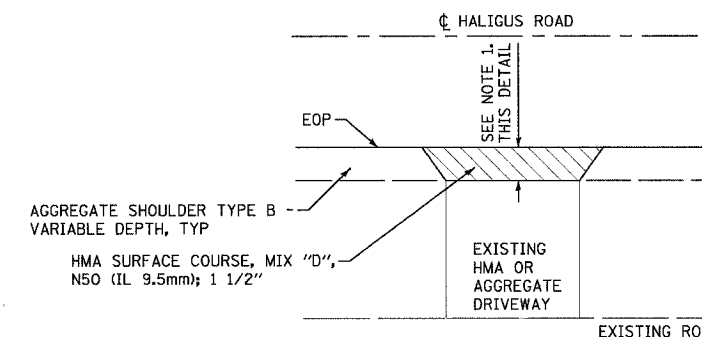
CONTRACT: 83979

**INDEX OF SHEETS**

SHEET NO.	TITLE
1	COVER SHEET
2	INDEX OF SHEETS, HIGHWAY STANDARDS, GENERAL NOTES AND DETAIL
3	SUMMARY OF QUANTITIES AND SCHEDULE OF MATERIALS
4	TYPICAL SECTIONS, HMA MIXTURE REQUIREMENTS AND DETAIL
5-9	PLAN - HALIGUS ROAD
10	BD-32 BUTT JOINTS AND HMA TAPER DETAILS
11	BM-14 METHOD OF FLAGGING
12	TC-10 TRAFFIC CONTROL AND PROTECTION FOR SIDE ROADS, INTERSECTIONS, AND DRIVEWAYS
13	TC-13 DISTRICT ONE TYPICAL PAVEMENT MARKINGS
14	TC-18 SIGNING FOR FLAGGING OPERATIONS AT WORK ZONE OPENINGS

**HIGHWAY STANDARDS**

000001-05	STANDARD SYMBOLS, ABBREVIATIONS, AND PATTERNS
406201-01	MAILBOX TURNOUT
442201-03	CLASS C AND D PATCHES
482011-03	HMA SHLD. STRIPS/SHLDS. WITH RESURFACING OR WIDENING AND RESURFACING PROJECTS
701011-01	OFF-RD MOVING OPERATIONS, 2L, 2W DAY ONLY
701201-02	LANE CLOSURE, 2L 2W, DAY ONLY, FOR SPEEDS >= 45 MPH
701206-01	LANE CLOSURE, 2L 2W, NIGHT ONLY, FOR SPEEDS >= 45 MPH
701301-02	LANE CLOSURE, 2L 2W, SHORT TIME OPERATIONS
701306-01	LANE CLOSURE, 2L 2W, SLOW MOVING OPERATIONS DAY ONLY, FOR SPEEDS >= 45 MPH
701311-02	LANE CLOSURE, 2L 2W, MOVING OPERATIONS-DAY ONLY
701901	TRAFFIC CONTROL DEVICES
780001-01	TYPICAL PAVEMENT MARKINGS



- NOTES: 1. 5' MIN WHEN MATCHING EXISTING HMA DRIVEWAY  
2' MIN. WHEN MATCHING EXISTING AGGREGATE DRIVEWAY

**HMA DRIVEWAY DETAIL**

NO SCALE

COPYRIGHT © 2007 BY BAXTER & WOODMAN, INC. REGISTERED PROFESSIONAL ENGINEERS & ARCHITECTS  
 STATE OF ILLINOIS LICENSE NO. 021-00000000-0000-0000-0000-000000000000  
 1/12/2007 9:50:48 AM P:\METV\070489-Haligus STP\00-Design\ADONS\070489-RE\KURT

	REVISIONS		VILLAGE OF LAKEWOOD	
	NAME	DATE	<b>INDEX OF SHEETS, HIGHWAY STANDARDS, GENERAL NOTES AND DETAILS</b>	
	MWP	10/2/07		
	MWP	11/1/07		
	PROJECT NO.: 070489		DESIGNED BY: (DJS)	
SCALE: NONE		DRAWN BY: (RKM)		
DATE: 08/07/07		CHECKED BY: (MWP)		

F.A.J. RTE.	SECTION	COUNTY	TOTAL SHEETS	SHEET NO.
3869	07-00009-00-RS	McHENRY	14	3
STA.		TO STA.		
FED. ROAD DIST. NO.	ILLINOIS	FED AID PROJECT		
C-91-340-07		M-8003 (840)		

CONTRACT: 83979

**SUMMARY OF QUANTITIES**

ITEM NO.	PAY ITEM	UNIT	I000-2A TOTAL
40600100	BITUMINOUS MATERIALS (PRIME COAT)	GAL	3643
40600300	AGGREGATE (PRIME COAT)	TON	73
40600400	MIXTURE FOR CRACKS JOINTS AND FLANGEWAYS	TON	15
40600982	HOT-MIX ASPHALT SURFACE REMOVAL - BUTT JOINT	SQ YD	1447
40603080	HOT-MIX ASPHALT BINDER COURSE, IL-19.0, N50	TON	159
40603335	HOT-MIX ASPHALT SURFACE COURSE, MIX "D" N50	TON	1861
44000158	HOT-MIX ASPHALT SURFACE REMOVAL 2 1/4"	SQ YD	257
44000161	HOT-MIX ASPHALT SURFACE REMOVAL 3"	SQ YD	918
44000198	HOT-MIX ASPHALT SURFACE REMOVAL, VARIABLE DEPTH	SQ YD	678
44201713	CLASS D PATCHES, TYPE I, 6-INCH	SQ YD	52
44201717	CLASS D PATCHES, TYPE II, 6-INCH	SQ YD	481
44201721	CLASS D PATCHES, TYPE III, 6-INCH	SQ YD	507
44201723	CLASS D PATCHES, TYPE IV, 6-INCH	SQ YD	1856
48101200	AGGREGATE SHOULDERS, TYPE B	TON	700
67100100	MOBILIZATION	LSUM	1
70100450	TRAFFIC CONTROL AND PROTECTION, STANDARD 701201	LSUM	1
70100455	TRAFFIC CONTROL AND PROTECTION, STANDARD 701206	LSUM	1
70100460	TRAFFIC CONTROL AND PROTECTION, STANDARD 701306	LSUM	1
78000200	THERMOPLASTIC PAVEMENT MARKING - LINE 4"	FOOT	25000
78000650	THERMOPLASTIC PAVEMENT MARKING - LINE 24"	FOOT	48
X4067107	POLYMERIZED LEVELING BINDER (MACHINE METHOD), IL-4.75, N50	TON	660

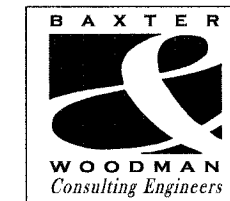
• INDICATES SPECIALTY ITEM

**SCHEDULE OF MATERIALS**

**HOT-MIX ASPHALT SURFACE REMOVAL - BUTT JOINT**

LOCATION	AREA (SQ YD)
HALIGUS ROAD - SOUTH PROJECT LIMITS	120
LAKEWOOD ROAD	165
CONLEY ROAD	125
BONNIE DRIVE	50
WOODLAND HILLS DRIVE (STA 54+90)	290
WOODLAND HILLS DRIVE (STA 74+04)	290
BALLARD ROAD (EAST OF HALIGUS)	50
BALLARD ROAD (WEST OF HALIGUS)	50
HALIGUS ROAD - NORTH PROJECT LIMITS	80
DRIVEWAYS	227
<b>TOTAL</b>	<b>1,447</b>

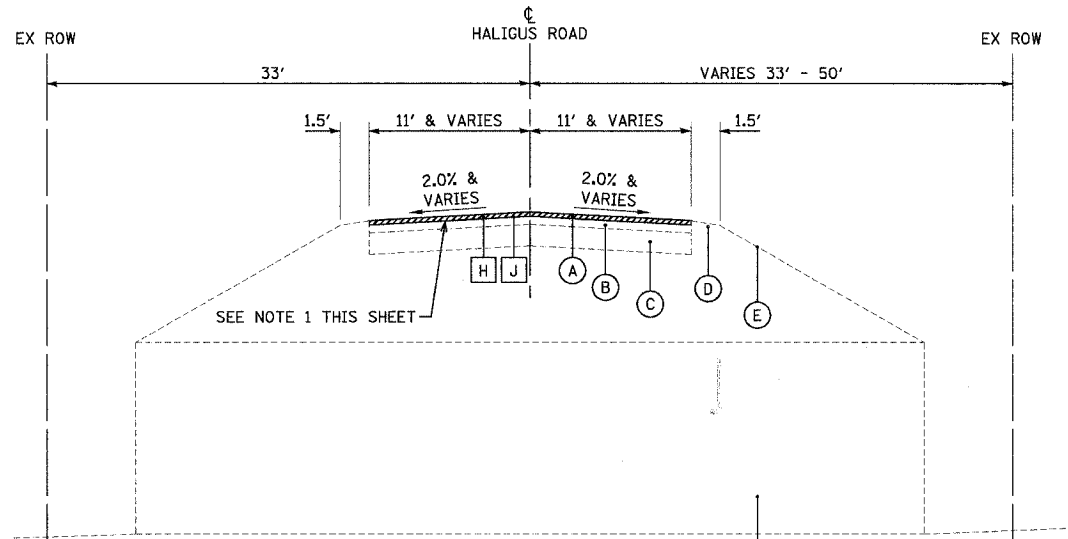
DRAWN BY: BAXTER, WOODMAN, INC. #PENTRBLAS  
 STATE OF ILLINOIS - PROFESSIONAL DESIGN FIRM #PLTD01V44  
 LICENSE NO. 194-00081 - EXPIRES 12/31/2009  
 5/27/07 9:50:52 AM I:\PROJECTS\070489-HALIGUS STP-40-Design\070489-500.dwg



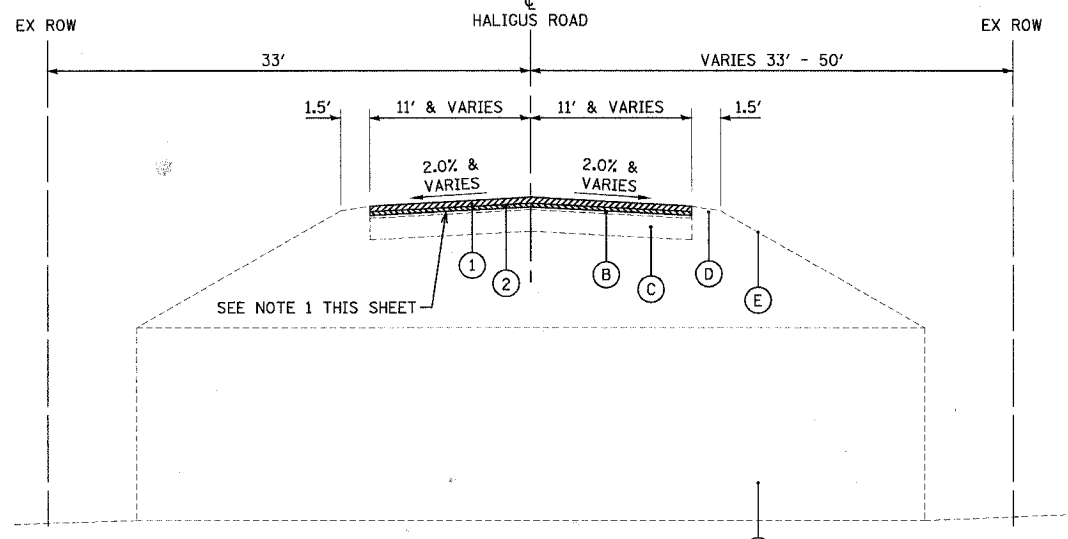
REVISIONS	
NAME	DATE
MWP	10/2/07
MWP	11/1/07

VILLAGE OF LAKEWOOD  
**SUMMARY OF QUANTITIES AND SCHEDULE OF MATERIALS**  
 PROJECT NO.: 070489      DESIGNED BY: (DJS)  
 SCALE: NONE              DRAWN BY: (RKM)  
 DATE: 08/07/07          CHECKED BY: (MWP)

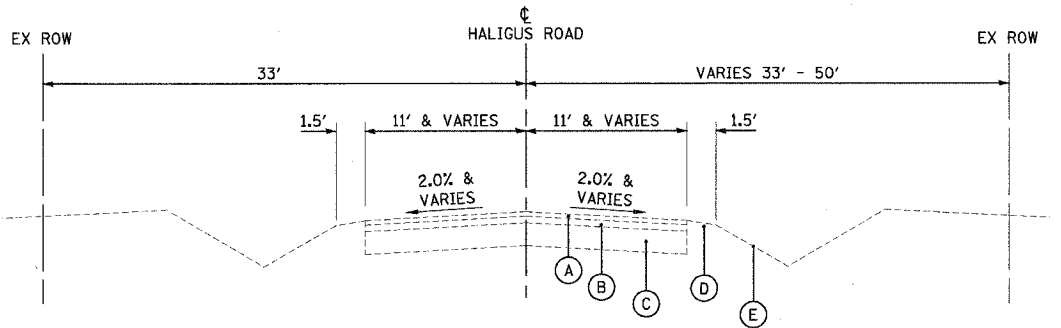
CONTRACT: 83979



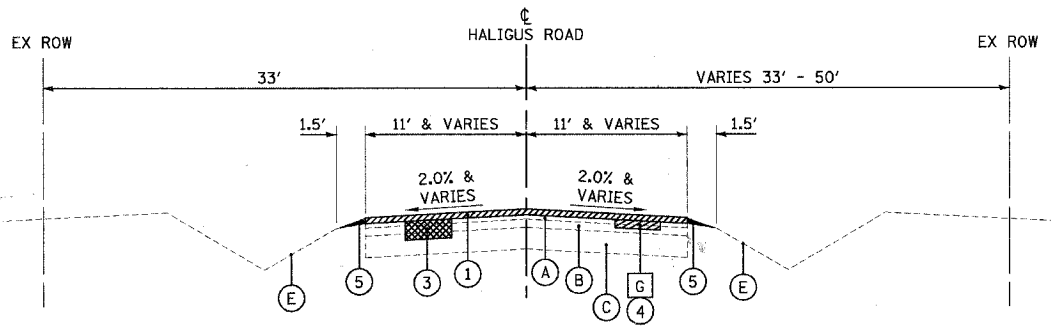
**EXISTING TYPICAL SECTION  
HALIGUS ROAD  
STA. 48+00 TO STA. 52+00**



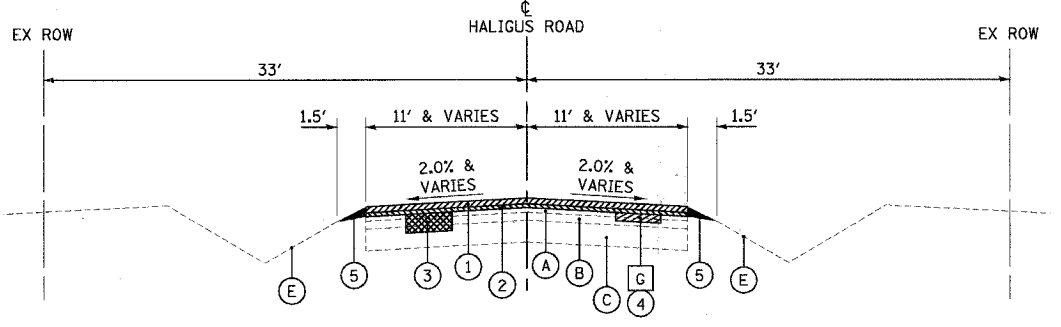
**PROPOSED TYPICAL SECTION  
HALIGUS ROAD  
STA. 48+00 TO STA. 52+00**



**EXISTING TYPICAL SECTION  
HALIGUS ROAD  
STA. 9+20 TO STA. 48+00  
STA. 52+00 TO STA. 92+37**



**PROPOSED TYPICAL SECTION  
HALIGUS ROAD  
STA. 9+20 TO STA. 32+50**



**PROPOSED TYPICAL SECTION  
HALIGUS ROAD  
STA. 32+50 TO STA. 48+00  
STA. 52+00 TO STA. 92+37**

**EXISTING LEGEND**

- (A) HMA SURFACE COURSE, 1 1/2" & VARIES
- (B) HMA BINDER COURSE, 2 1/2" & VARIES
- (C) AGGREGATE BASE COURSE, 10" & VARIES
- (D) AGGREGATE SHOULDER
- (E) GROUND SURFACE
- (F) EXISTING 84" DIA. CMP (3 IN SERIES)
- (G) HMA SURFACE REMOVAL, 3"
- (H) HMA SURFACE REMOVAL, VARIABLE DEPTH, STA 48+00 TO STA 49+45 AND STA 50+55 TO STA 52+00 SEE DETAIL THIS SHEET AND PLANS FOR SPECIFIC DEPTH
- (J) HMA SURFACE REMOVAL, 2 1/4", STA 49+45 TO STA 50+55 SEE DETAIL THIS SHEET

**PROPOSED LEGEND**

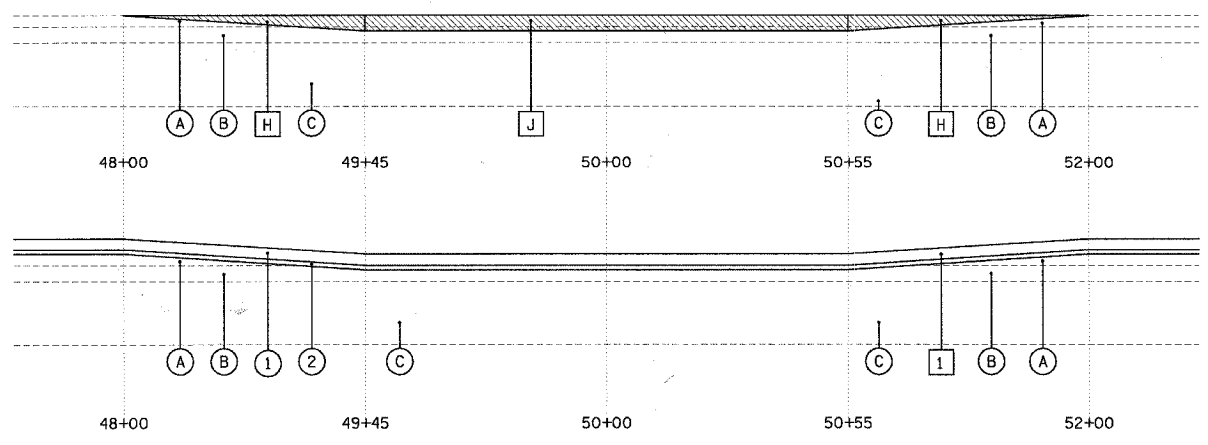
- (1) HMA SURFACE COURSE, MIX "D", N50 (IL 9.5mm) - 1 1/2"
- (2) POLYMERIZED LEVELING BINDER (MACHINE METHOD), IL-4.75, N50 - 3/4" AVG
- (3) CLASS D PATCHES, TYPE I-IV, 6-INCH
- (4) HMA BINDER COURSE, IL-19.0, N50 - 3"
- (5) AGGREGATE SHOULDER TYPE B - VARIABLE DEPTH

NOTES:  
1. NO PATCHING IS ALLOWED WITHIN THESE LIMITS.

**HOT-MIX ASPHALT MIXTURE REQUIREMENTS**

MIXTURE TYPE	AC TYPE	VOIDS
<b>RESURFACING</b>		
HOT-MIX ASPHALT SURFACE COURSE, MIX "D", N50 (IL 9.5 mm); 1 1/2"	PG 64-22	4% @ 50 GYR
POLYMERIZED LEVELING BINDER (MACHINE METHOD), IL-4.75, N50	SBS/SBR PG 76-28/-22	4% @ 50 GYR
<b>PATCHING</b>		
HMA BINDER COURSE, IL-19.0, N50 - 3"	PG 64-22*	4% @ 50 GYR
CLASS D PATCHES (HMA BINDER COURSE, IL-19, N50)	PG 64-22*	4% @ 50 GYR

THE UNIT WEIGHT USED TO CALCULATE ALL HMA SURFACE MIXTURE QUANTITIES IS 112 LB/SQ YD/IN.  
\* WHEN RAP EXCEEDS 20%, THE NEW ASPHALT BINDER IN THE MIX SHALL BE PG 58-22.



**HOT-MIX ASPHALT SURFACE REMOVAL AND RESURFACING**



REVISIONS	
NAME	DATE
MWP	10/2/07
MWP	11/1/07

VILLAGE OF LAKEWOOD  
**TYPICAL SECTIONS,  
HMA MIXTURE REQUIREMENTS  
AND DETAIL**

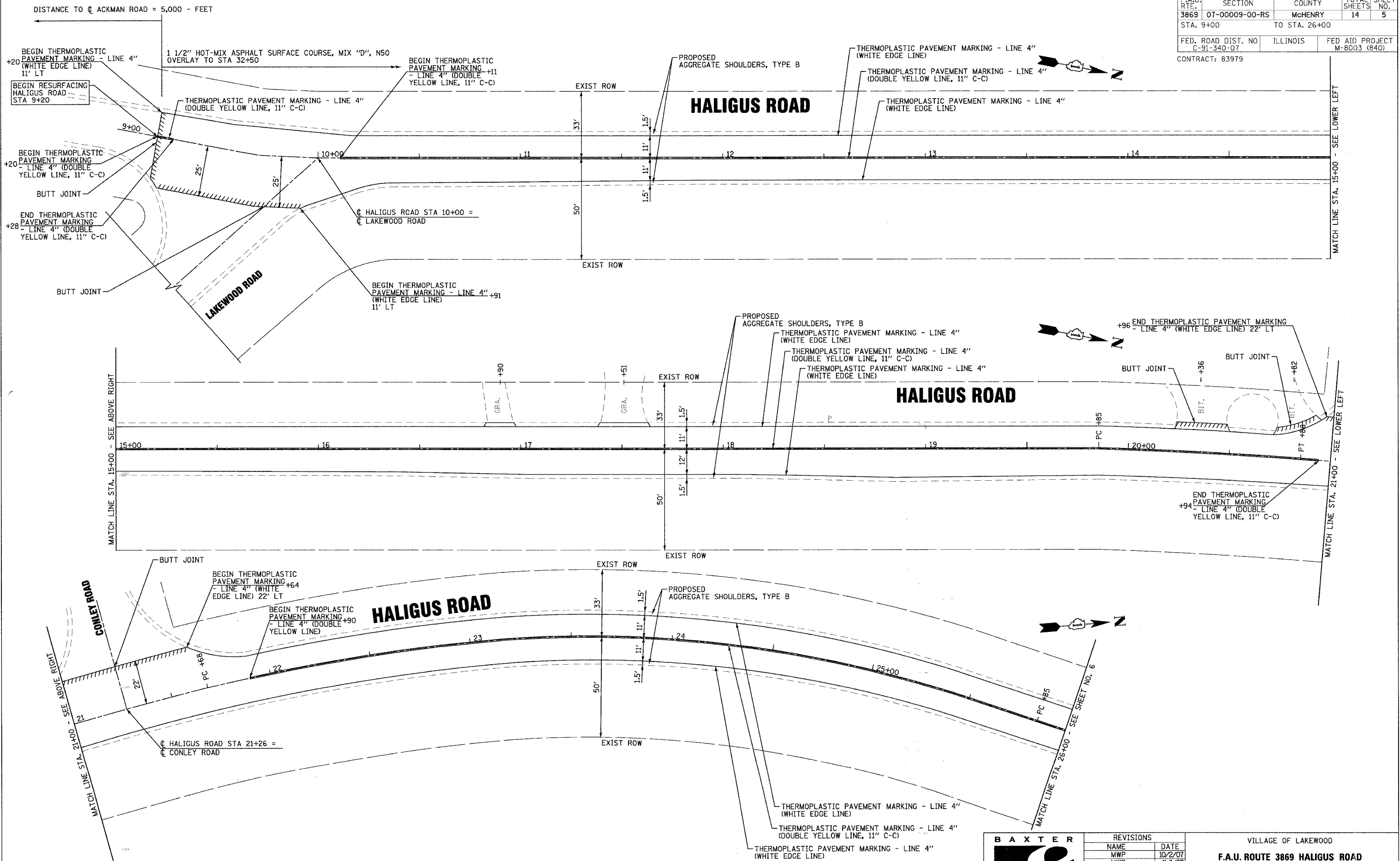
PROJECT NO.: 070489  
SCALE: NONE  
DATE: 08/07/07

DESIGNED BY: (DJS)  
DRAWN BY: (RKM)  
CHECKED BY: (MWP)

PREPARED BY: BAXTER & WOODMAN, INC.  
 1125 W. WASHINGTON ST., SUITE 200, DEERFIELD, IL 60015  
 LICENSE NO. 001-000001-EXPRESSES 4/30/2009  
 11/25/2007

F.A.U. RTE.	SECTION	COUNTY	TOTAL SHEETS	SHEET NO.
3869	07-00009-00-RS	McHENRY	14	5
STA. 9+00		TO STA. 26+00		
FED. ROAD DIST. NO.	ILLINOIS	FED AID PROJECT		
C-91-340-07		M-8003 (840)		

CONTRACT: 83979



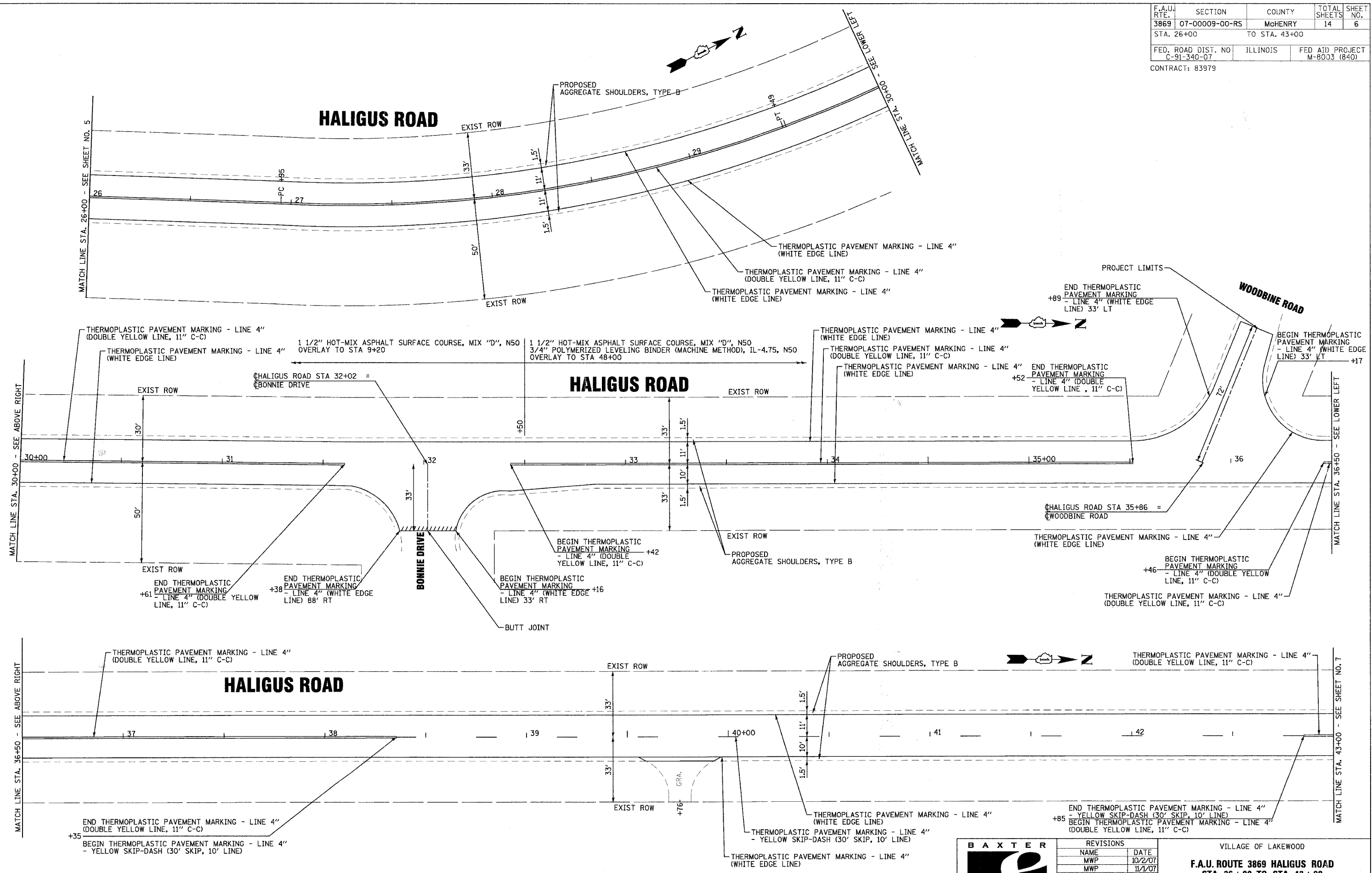
COPYRIGHT © 2007 BY BAXTER & WOODMAN, INC.  
 LICENSE NO. 184-00121 - EXPIRES 4/30/2009  
 5/22/07 11/5/2007 8:50:53 AM



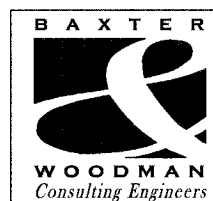
REVISIONS	
NAME	DATE
MWP	10/2/07
MWP	11/1/07

VILLAGE OF LAKEWOOD  
**F.A.U. ROUTE 3869 HALIGUS ROAD**  
**STA 9+00 TO STA 26+00**  
 PROJECT NO.: 070489  
 SCALE: 1" = 20'  
 DATE: 08/07/07  
 DESIGNED BY: (DJS)  
 DRAWN BY: (RKM)  
 CHECKED BY: (MWP)

F.A.U. RTE.	SECTION	COUNTY	TOTAL SHEETS	SHEET NO.
3869	07-00009-00-RS	McHENRY	14	6
STA. 26+00		TO STA. 43+00		
FED. ROAD DIST. NO.	ILLINOIS	FED AID PROJECT		
C-91-340-07		M-8003 (840)		
CONTRACT: 83979				



COPYRIGHT © 2007 BY BAXTER & WOODMAN, INC.  
 LICENSE NO. 07-00009-00-RS EXPIRES 4/30/2009 #P/LDRVA8  
 ILLINOIS PROFESSIONAL ENGINEERING BOARD REGISTRATION NO. 07-00009-00-RS-2-014  
 11/2/2007

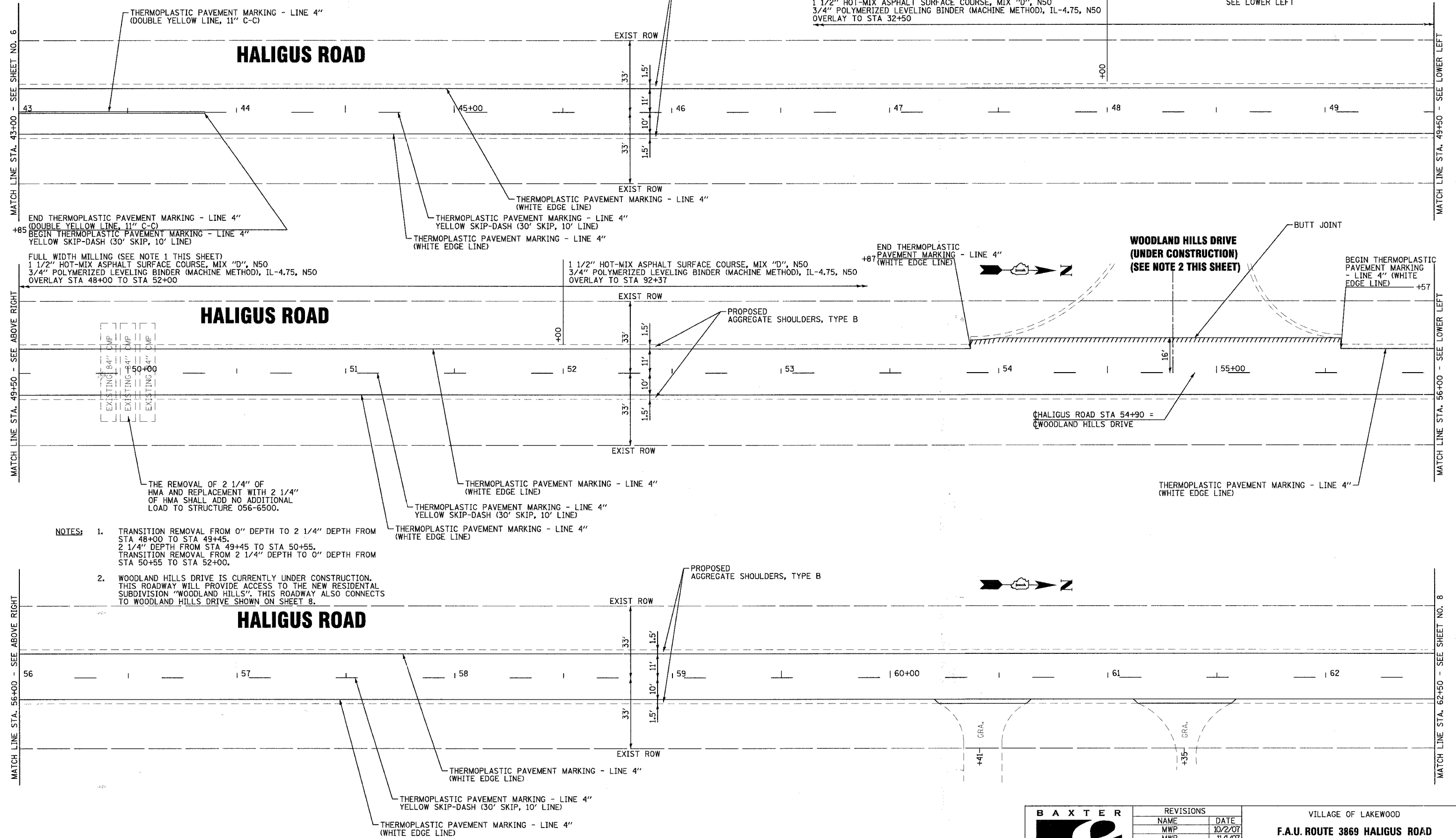
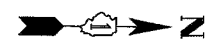


REVISIONS	
NAME	DATE
MWP	10/2/07
MWP	11/1/07

VILLAGE OF LAKEWOOD  
**F.A.U. ROUTE 3869 HALIGUS ROAD**  
**STA 26+00 TO STA 43+00**  
 PROJECT NO.: 070489      DESIGNED BY: (DJS)  
 SCALE: 1" = 20'      DRAWN BY: (RKM)  
 DATE: 08/07/07      CHECKED BY: (MWP)

F.A.U. RTE.	SECTION	COUNTY	TOTAL SHEETS	SHEET NO.
3869	07-00009-00-RS	McHENRY	14	7
STA. 43+00		TO STA. 62+50		
FED. ROAD DIST. NO.	ILLINOIS	FED AID PROJECT		
C-91-340-07		M-8003 (840)		

CONTRACT: 83979



MATCH LINE STA. 43+00 - SEE SHEET NO. 6

MATCH LINE STA. 49+50 - SEE LOWER LEFT

MATCH LINE STA. 49+50 - SEE ABOVE RIGHT

MATCH LINE STA. 56+00 - SEE LOWER LEFT

MATCH LINE STA. 56+00 - SEE ABOVE RIGHT

MATCH LINE STA. 62+50 - SEE SHEET NO. 8

END THERMOPLASTIC PAVEMENT MARKING - LINE 4" (DOUBLE YELLOW LINE, 11" C-C)  
 BEGIN THERMOPLASTIC PAVEMENT MARKING - LINE 4" YELLOW SKIP-DASH (30' SKIP, 10' LINE)

FULL WIDTH MILLING (SEE NOTE 1 THIS SHEET)  
 1 1/2" HOT-MIX ASPHALT SURFACE COURSE, MIX "D", N50  
 3/4" POLYMERIZED LEVELING BINDER (MACHINE METHOD), IL-4.75, N50  
 OVERLAY STA 48+00 TO STA 52+00

1 1/2" HOT-MIX ASPHALT SURFACE COURSE, MIX "D", N50  
 3/4" POLYMERIZED LEVELING BINDER (MACHINE METHOD), IL-4.75, N50  
 OVERLAY TO STA 92+37

1 1/2" HOT-MIX ASPHALT SURFACE COURSE, MIX "D", N50  
 3/4" POLYMERIZED LEVELING BINDER (MACHINE METHOD), IL-4.75, N50  
 OVERLAY TO STA 32+50

SEE LOWER LEFT

WOODLAND HILLS DRIVE (UNDER CONSTRUCTION) (SEE NOTE 2 THIS SHEET)

CHALIGUS ROAD STA 54+90 = WOODLAND HILLS DRIVE

- NOTES:
- TRANSITION REMOVAL FROM 0" DEPTH TO 2 1/4" DEPTH FROM STA 48+00 TO STA 49+45.  
 2 1/4" DEPTH FROM STA 49+45 TO STA 50+55.  
 TRANSITION REMOVAL FROM 2 1/4" DEPTH TO 0" DEPTH FROM STA 50+55 TO STA 52+00.
  - WOODLAND HILLS DRIVE IS CURRENTLY UNDER CONSTRUCTION. THIS ROADWAY WILL PROVIDE ACCESS TO THE NEW RESIDENTIAL SUBDIVISION "WOODLAND HILLS". THIS ROADWAY ALSO CONNECTS TO WOODLAND HILLS DRIVE SHOWN ON SHEET 8.



THE REMOVAL OF 2 1/4" OF HMA AND REPLACEMENT WITH 2 1/4" OF HMA SHALL ADD NO ADDITIONAL LOAD TO STRUCTURE 056-6500.



REVISIONS	
NAME	DATE
MWP	10/2/07
MWP	11/1/07

VILLAGE OF LAKEWOOD  
**F.A.U. ROUTE 3869 HALIGUS ROAD**  
**STA 43+00 TO STA 62+50**

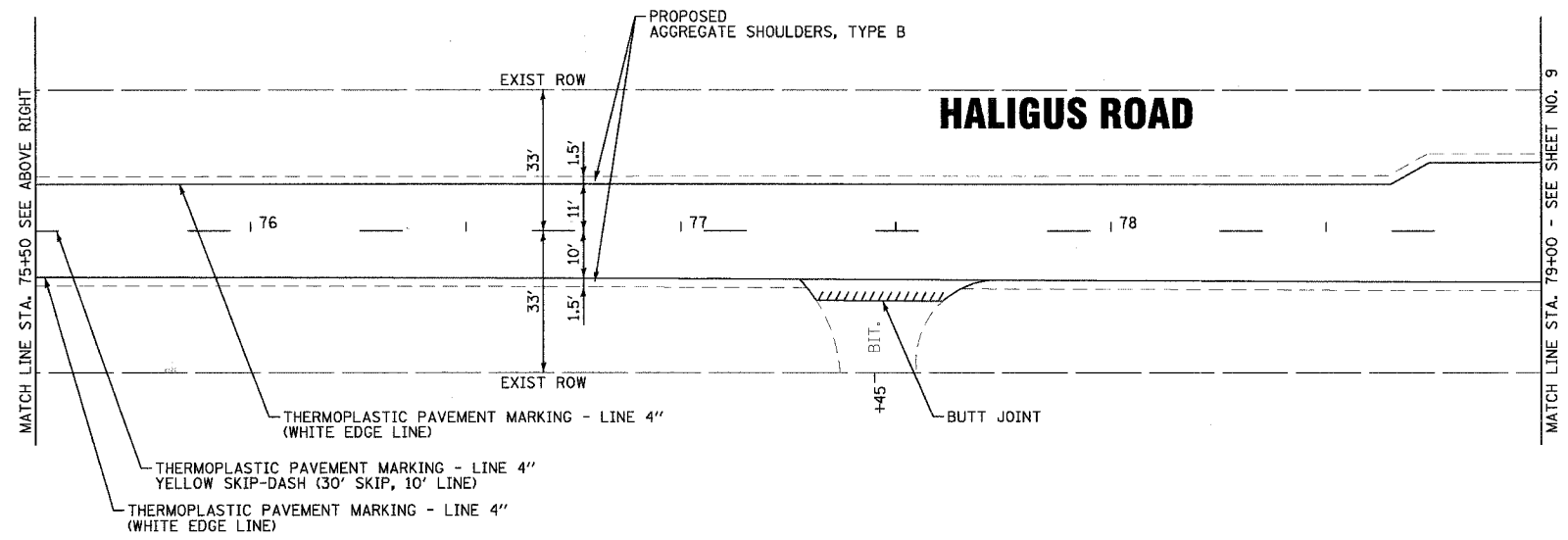
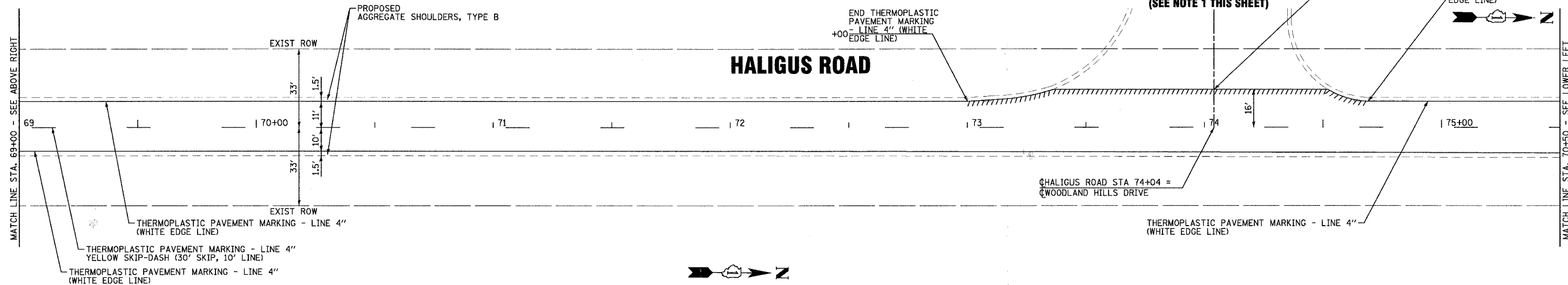
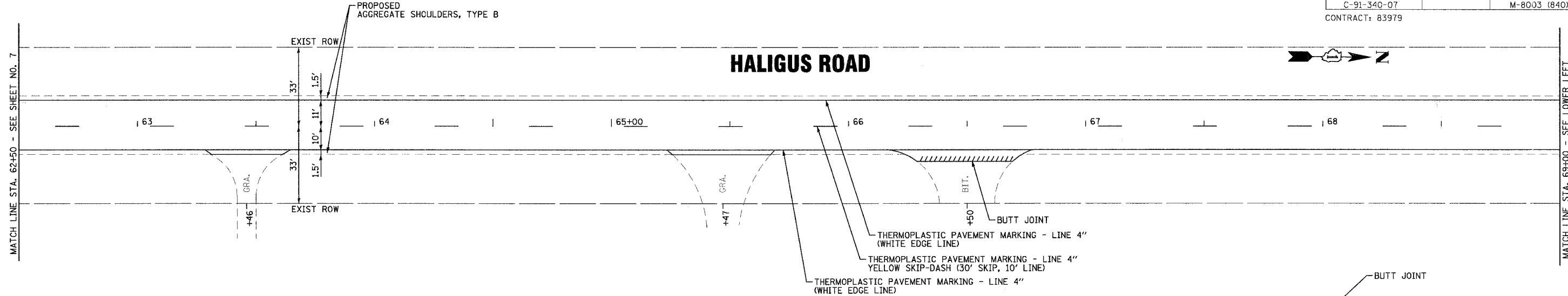
PROJECT NO.: 070489  
 SCALE: 1" = 20'  
 DATE: 08/07/07

DESIGNED BY: (DJS)  
 DRAWN BY: (RKM)  
 CHECKED BY: (MWP)

COPYRIGHT © 2007 BY BAXTER & WOODMAN, INC.  
 LICENSE NO. 84-0021 - EXPIRES 4/30/2009  
 ILLINOIS PROFESSIONAL ENGINEERING LICENSE NO. 056-6500  
 11/2/2007

F.A.U. RTE.	SECTION	COUNTY	TOTAL SHEETS	SHEET NO.
3869	07-00009-00-RS	McHENRY	14	8
STA. 62+50		TO STA. 80+50		
FED. ROAD DIST. NO.	ILLINOIS	FED AID PROJECT		
C-91-340-07		M-8003 (840)		

CONTRACT: 83979



NOTES: 1. WOODLAND HILLS DRIVE IS CURRENTLY UNDER CONSTRUCTION. THIS ROADWAY WILL PROVIDE ACCESS TO THE NEW RESIDENTIAL SUBDIVISION "WOODLAND HILLS". THIS ROADWAY ALSO CONNECTS TO WOODLAND HILLS DRIVE SHOWN ON SHEET 7.

COPYRIGHT © 2007 BY BAXTER & WOODMAN, INC.  
 LICENSE NO. - B4-00121 - EXPIRES 4/30/2008  
 11/5/2007 9:50:58 AM I:\LKMD\070489-Haligus STA 62+50 to 79+00\DWG\070489-PLAN-4.BIT



REVISIONS	
NAME	DATE
MWP	10/2/07
MWP	11/1/07

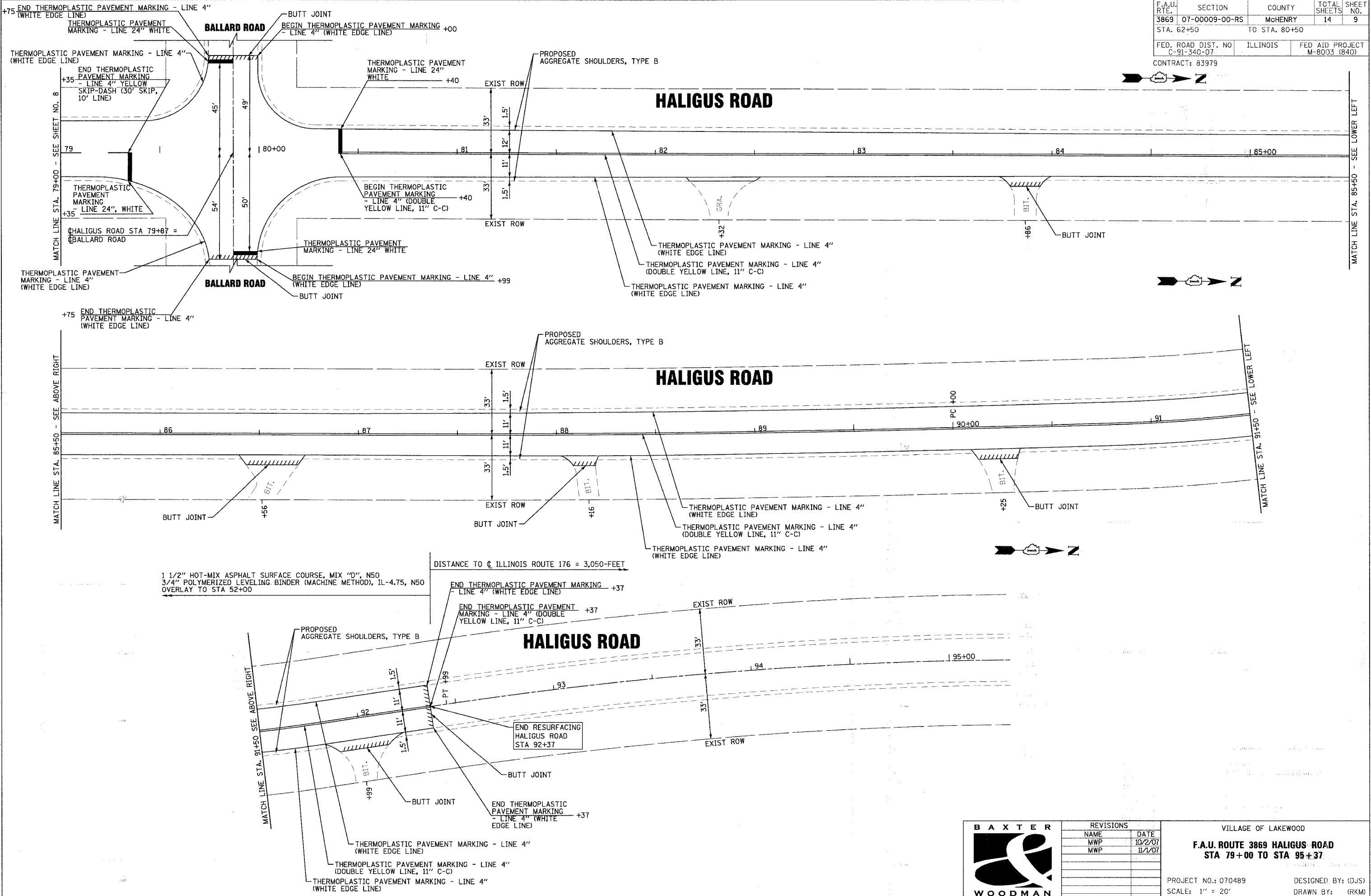
VILLAGE OF LAKEWOOD  
**F.A.U. ROUTE 3869 HALIGUS ROAD**  
**STA 62+50 TO STA 79+00**

PROJECT NO.: 070489      DESIGNED BY: (DJS)  
 SCALE: 1" = 20'      DRAWN BY: (RKM)  
 DATE: 08/07/07      CHECKED BY: (MWP)



F.A.U. RTE.	SECTION	COUNTY	TOTAL SHEETS	SHEET NO.
3869	07-00009-00-RS	McHENRY	14	9
STA. 62+50		TO STA. 80+50		
FED. ROAD DIST. NO.	ILLINOIS	FED AID PROJECT		
C-91-340-07		M-8003 (840)		

CONTRACT: 83979



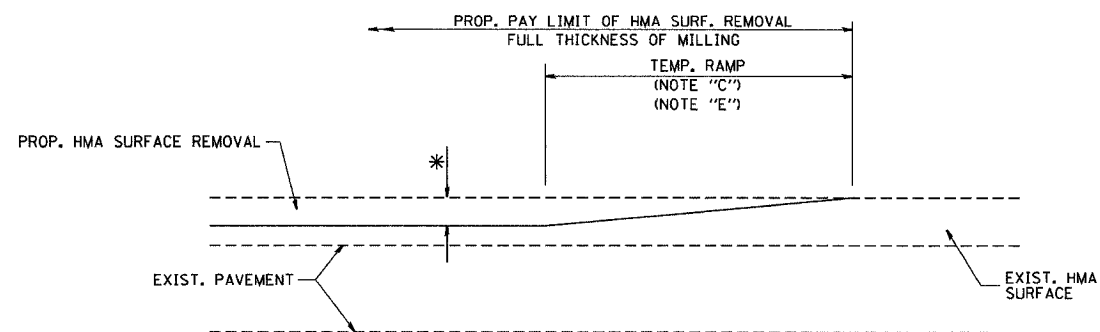
COPYRIGHT © 2007 BY BAXTER & WOODMAN, INC.  
 LICENSE NO. 07-00009-00-RS EXPIRES 4/30/2009  
 11/2/2007 8:50:53 AM



REVISIONS	
NAME	DATE
MWP	10/2/07
MWP	11/1/07

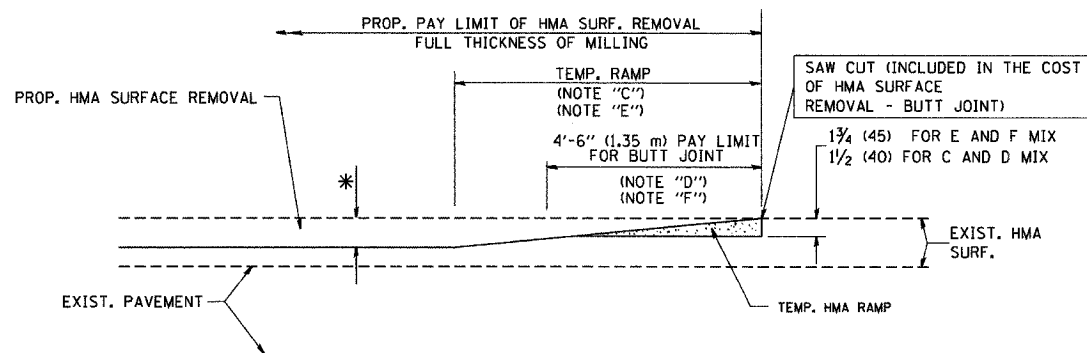
VILLAGE OF LAKEWOOD  
**F.A.U. ROUTE 3869 HALIGUS ROAD**  
**STA 79+00 TO STA 95+37**  
 PROJECT NO.: 070489  
 SCALE: 1" = 20'  
 DATE: 08/07/07  
 DESIGNED BY: (DJS)  
 DRAWN BY: (RKM)  
 CHECKED BY: (MWP)

CONTRACT NO.				
F.A. RTE.	SECTION	COUNTY	TOTAL SHEETS	SHEET NO.
3869	07-00009-00-RS	McHENRY	14	10
STA.	TO STA.			
FED. ROAD DIST. NO. 1	ILLINOIS	FED. AID PROJECT		
C-91-340-07		M-8003 (840)		
CONTRACT No: 83979				



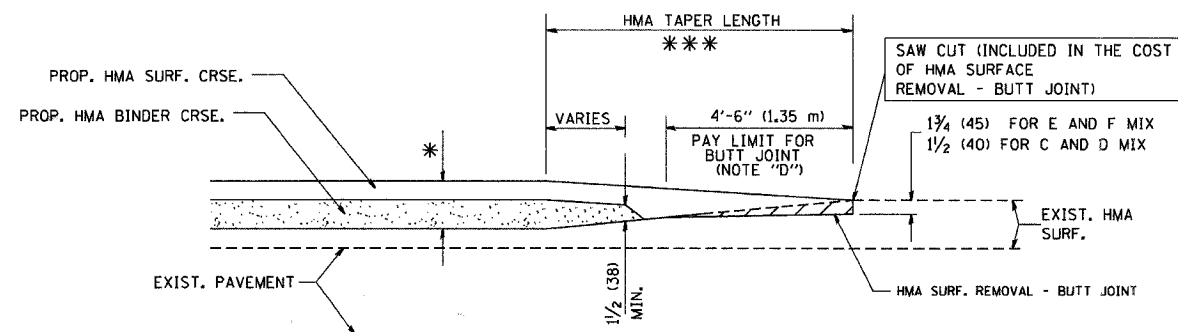
MILLED TEMPORARY RAMP  
(FOR BUTT JOINT AND HMA TAPER SEE DETAIL BELOW)

OPTION 1

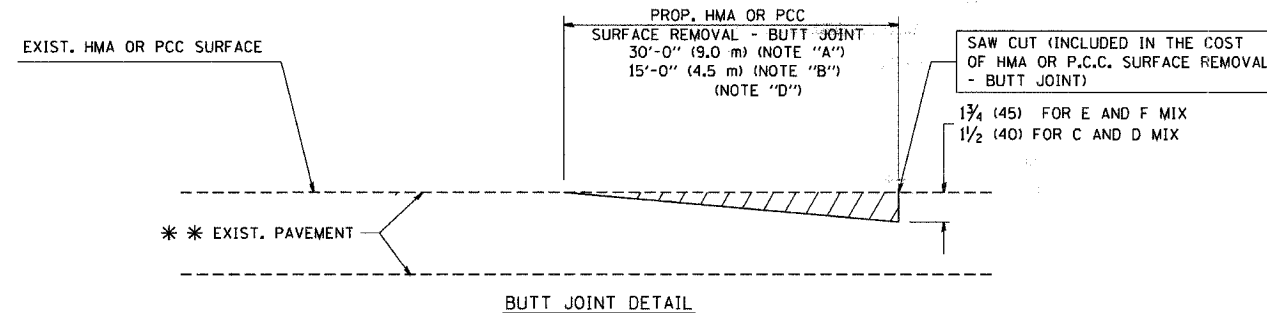


HMA CONSTRUCTED TEMPORARY RAMP  
(FOR BUTT JOINT AND HMA TAPER SEE DETAIL BELOW)

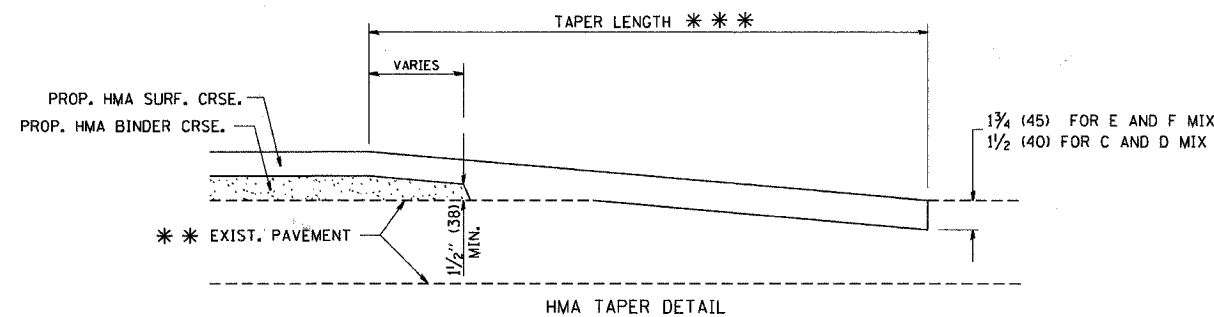
OPTION 2  
TYPICAL TEMPORARY RAMP



BUTT JOINT AND HMA TAPER  
TYPICAL BUTT JOINT AND HMA TAPER  
FOR MILLING AND RESURFACING



BUTT JOINT DETAIL



HMA TAPER DETAIL

TYPICAL BUTT JOINT AND HMA TAPER  
FOR RESURFACING ONLY

\*\* PC CONCRETE, HMA OR HMA RESURFACED PAVEMENT.

NOTES

- A: MAINLINE ROADWAYS AND MAJOR SIDE ROADS.
  - B: MINOR SIDE ROADS.
  - C: THE TEMP. RAMP SHALL BE CONSTRUCTED IMMEDIATELY UPON REMOVAL OF THE EXISTING HMA SURFACE.
  - D: THE BUTT JOINT SHALL BE CONSTRUCTED IMMEDIATELY PRIOR TO PLACING THE PROPOSED HMA COURSES.
  - E: TAPER THE TEMP. RAMP AT A RATE OF 3'-0" (900 mm) PER 1 INCH (25 mm) OF MILLING THICKNESS.
  - F: INSTALLATION AND REMOVAL OF THE 4'-6" (1.35 m) TEMP. RAMP IS INCLUDED IN COST OF HMA SURFACE REMOVAL - BUTT JOINT
  - G: SEE ARTICLE 406.08 AND 406.14 OF THE STANDARD SPECIFICATIONS FOR "HMA AND/OR PCC SURFACE REMOVAL, BUTT JOINT".
- \* SEE TYPICAL SECTIONS FOR MILLING THICKNESS.

\*\*\* 20'-0" (6.1 m) PER 1 (25) RESURFACING (NOTE "A")  
10'-0" (3.0 m) PER 1 (25) RESURFACING (NOTE "B")

ALL DIMENSIONS ARE IN INCHES (MILLIMETERS) UNLESS OTHERWISE SHOWN.

BASIS OF PAYMENT:

THE BUTT JOINT WILL BE PAID FOR AT THE CONTRACT UNIT PRICE PER SQUARE YARD (SQUARE METER) FOR "HOT-MIX ASPHALT SURFACE REMOVAL - BUTT JOINT" OR FOR "PORTLAND CEMENT CONCRETE SURFACE REMOVAL - BUTT JOINT".

REVISIONS	
NAME	DATE
M. DE YONG	6-13-90
M. DE YONG	7-3-90
M. DE YONG	3-27-92
R. SHAH	09/09/94
R. SHAH	10/25/94
A. ABBAS	03/21/97
M. GOMEZ	04/06/01
R. BORO	01/01/07

ILLINOIS DEPARTMENT OF TRANSPORTATION

BUTT JOINT AND HMA TAPER DETAILS

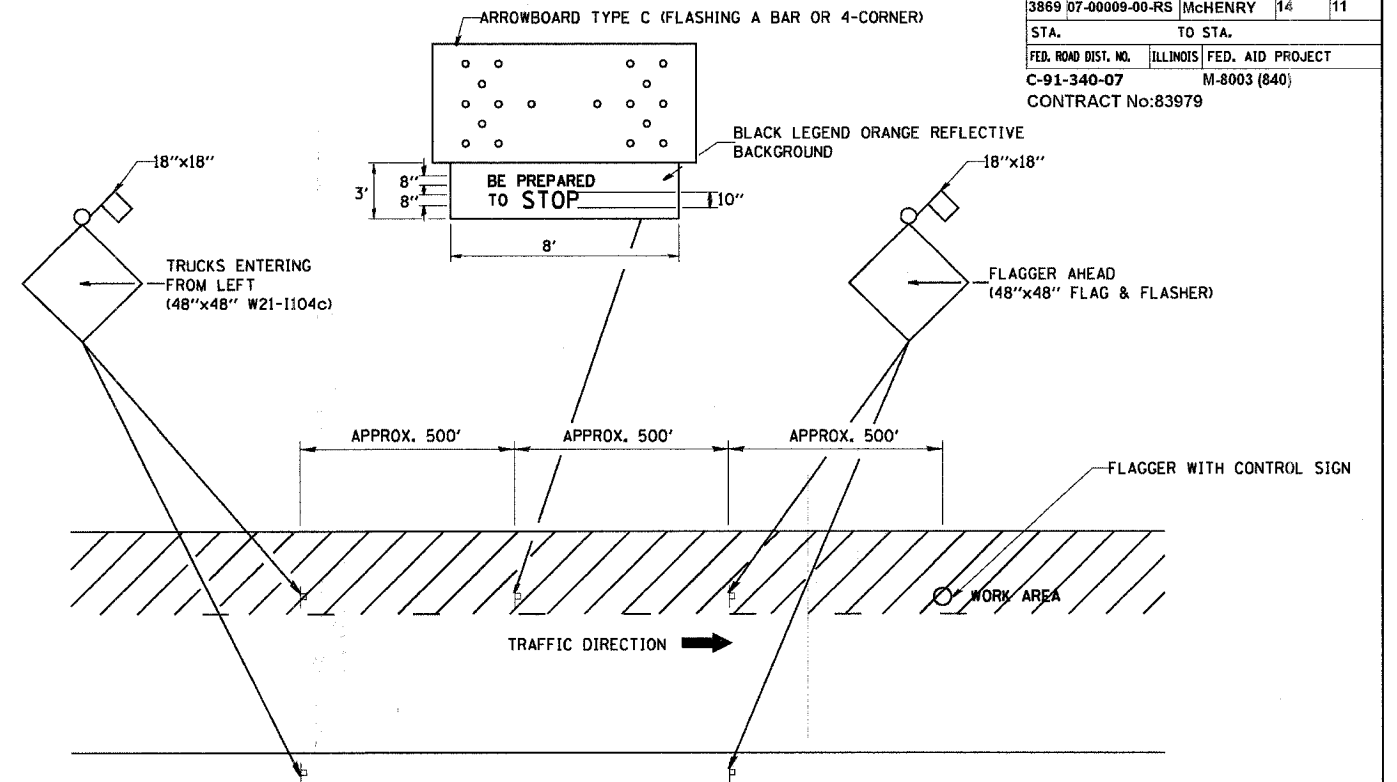
SCALE: VERT. NONE  
HORIZ.

DRAWN BY

CHECKED BY

BD400-05 (V1=BD32)

F.A. RTE.	SECTION	COUNTY	TOTAL SHEETS	SHEET NO.
3869 07-00009-00-RS	McHENRY	14	11	
STA.		TO STA.		
FED. ROAD DIST. NO.	ILLINOIS	FED. AID PROJECT		
C-91-340-07		M-8003 (840)		
CONTRACT No: 83979				



**METHOD OF FLAGGING**

**NOTE:**

1. SIGNS SHALL BE MOUNTED AT A MINIMUM CLEARANCE HEIGHT OF 5 FEET
2. ALL SIGNS SHALL BE REMOVED WHEN THE FLAGGING OPERATION CEASES.
3. THIS CASE ALSO APPLIES WHEN THE WORK ZONE IS ON THE RIGHT. UNDER THESE CONDITIONS "TRUCKS ENTERING FROM RIGHT" SIGNS SHALL BE SUBSTITUTED FOR "TRUCKS ENTERING FROM LEFT" SIGNS. ALSO THE ARROWBOARD AND "BE PREPARED TO STOP" SIGNS SHALL BE RELOCATED TO THE RIGHT SIDE OF THE ROAD.
4. WORK ZONE ACCESS POINTS SHOULD BE A MINIMUM OF ONE HALF MILE APART. MEDIAN WORK ZONE ACCESS POINTS SHOULD NOT BE LOCATED OPPOSITE OF EACH OTHER.
5. NIGHTTIME FLAGGING OPERATIONS: THE FLAG STATION SHALL BE LIGHTED WITH ADDITIONAL LIGHTS OTHER THAN STREET LIGHTS. THE FLAGGER CONTROL SIGN AND THE FLAGGER'S VEST SHALL BE REFLECTORIZED. IN ADDITION, THE FLAGGER SHALL HAVE A FLASHLIGHT OR LIGHTED WAND.

REVISIONS	
NAME	DATE
RAY RITCHIE	5/10/00

ILLINOIS DEPARTMENT OF TRANSPORTATION

**METHOD OF FLAGGING**

SCALE: NOT TO SCALE

DATE: 2/15/2006

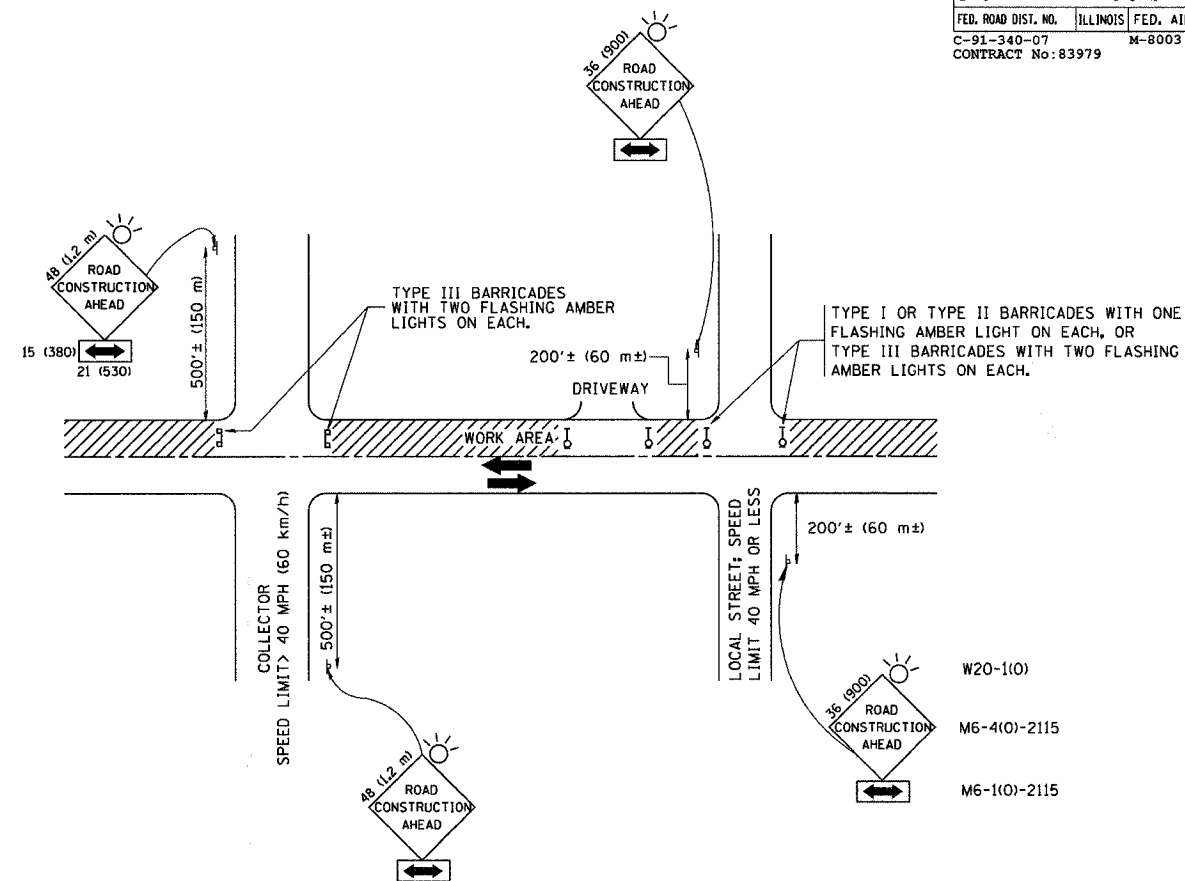
DRAWN BY C.A.D.

CHECKED BY

BM-14

REVISION DATE: 05/10/00

CONTRACT NO.				
F.A. RTE.	SECTION	COUNTY	TOTAL SHEETS	SHEET NO.
3869	07-00009-00-RS	McHENRY	14	12
STA.		TO STA.		
FED. ROAD DIST. NO.		ILLINOIS	FED. AID PROJECT	
C-91-340-07		M-8003 (840)		
CONTRACT No: 83979				



### TRAFFIC CONTROL AND PROTECTION FOR SIDE ROADS, INTERSECTIONS, AND DRIVEWAYS

#### NOTES:

- A. FOR NO LANE RESTRICTION ON THE SIDE ROAD OR DRIVEWAYS**
- SIDE ROAD WITH A SPEED LIMIT OF 40 MPH (60 km/h) OR LESS AS SHOWN ON THE DRAWING AND AS DIRECTED BY THE ENGINEER:
    - ONE ROAD CONSTRUCTION AHEAD SIGN 36 x 36 (900x900) WITH A FLASHER AND FLAG MOUNTED ON IT APPROXIMATELY 200' (60 m) IN ADVANCE OF THE MAIN ROUTE.
    - THE CLOSED PORTION OF THE MAIN ROUTE SHALL BE PROTECTED BY BLOCKING WITH TYPE I, TYPE II OR TYPE III BARRICADES, 1/3 OF THE CROSS SECTION OF THE CLOSED PORTION.
  - SIDE ROAD WITH A SPEED LIMIT GREATER THAN 40 MPH (60 km/h) AS SHOWN ON THE DRAWING AND AS DIRECTED BY THE ENGINEER:
    - ONE ROAD CONSTRUCTION AHEAD SIGN 48 x 48 (1.2 m x 1.2 m) WITH A FLASHER MOUNTED ON IT APPROXIMATELY 500' (150 m) IN ADVANCE OF THE MAIN ROUTE.
    - THE CLOSED PORTION OF THE MAIN ROUTE SHALL BE PROTECTED BY BLOCKING WITH TYPE III BARRICADES, 1/2 OF THE CROSS SECTION OF THE CLOSED PORTION.
- 3. WHEN THE SIDE ROAD LIES BETWEEN THE BEGINNING OF THE MAINLINE SIGNING AND THE WORK ZONE, A SINGLE HEADED ARROW (M6-1) SHALL BE USED IN LIEU OF THE DOUBLE HEADED ARROW (M6-4).**
- B. FOR A LANE CLOSURE ON A SIDE ROAD OR DRIVEWAY:**
- USE APPLICABLE PORTIONS OF THE TYPICAL APPLICATION OF TRAFFIC CONTROL DEVICES (STD. 701501, STD. 701606 OR THE APPROPRIATE STANDARD). THE SPACING OF SIGNS AND BARRICADES SHALL BE ADJUSTED FOR FIELD CONDITIONS AS DIRECTED BY THE ENGINEER. THE DIRECTIONAL ARROW SHALL BE COVERED OR REMOVED WHEN NO LONGER CONSISTENT WITH THE SIDE ROAD LANE CLOSURE.
- C. ADVANCE WARNING SIGNS ARE TO BE OMITTED ON DRIVEWAY UNLESS OTHERWISE NOTED.**
- D. THE TRAFFIC CONTROL AND PROTECTION FOR SIDE ROADS, INTERSECTIONS, AND DRIVEWAYS SHALL BE INCIDENTAL TO THE COST OF SPECIFIED TRAFFIC CONTROL STANDARDS OR ITEMS.**

All dimensions are in millimeters (inches) unless otherwise shown.

REVISIONS	
NAME	DATE
LHA	6/789
T. RAMMACHER	09/08/94
J. OBERLE	10/18/95
A. HOUSEH	03/06/96
A. HOUSEH	10/15/96
T. RAMMACHER	01/06/00

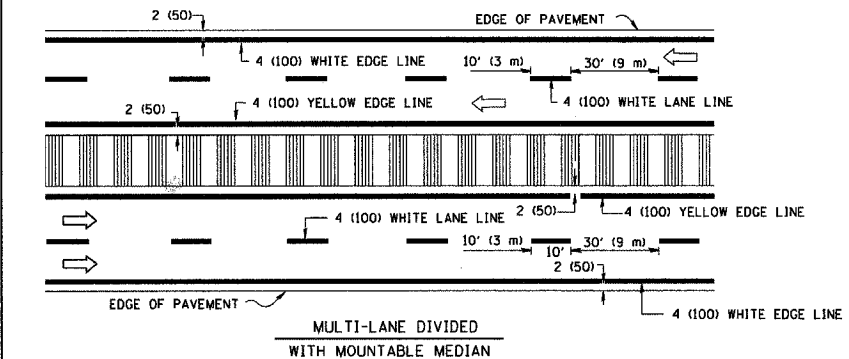
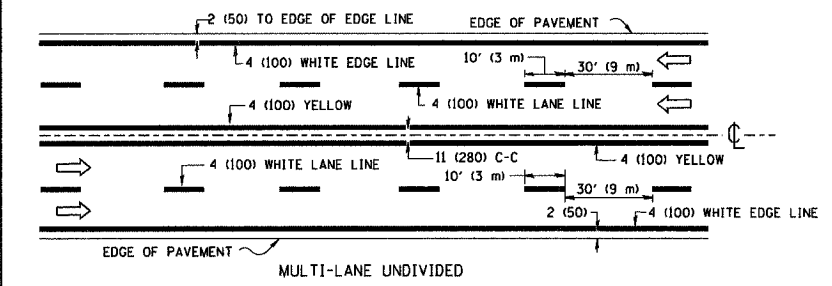
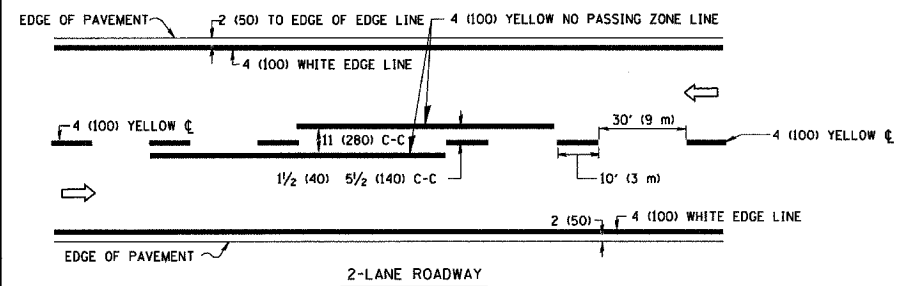
ILLINOIS DEPARTMENT OF TRANSPORTATION  
 TRAFFIC CONTROL AND PROTECTION  
 FOR  
 SIDE ROADS, INTERSECTIONS, AND  
 DRIVEWAYS

SCALE: NONE

DRAWN BY  
 CHECKED BY  
 TC-10

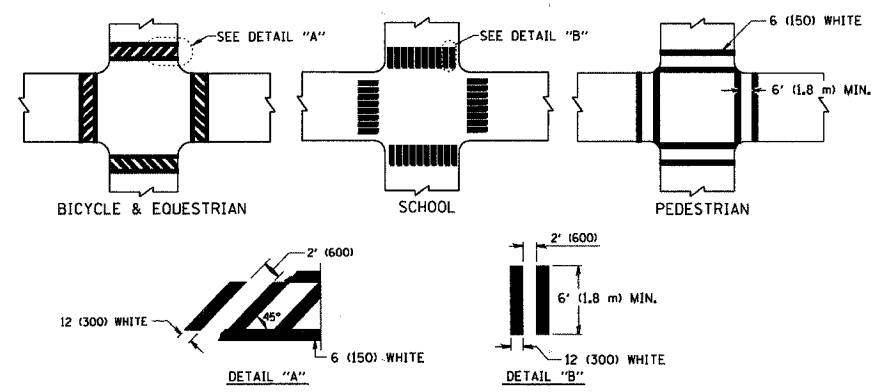
PLOT DATE = 3/16/2007  
 FILE NAME = K:\data\std\std\std.dgn  
 PLOT SCALE = 0.0000 / IN.  
 USER NAME = baureid

F.A. SECTION COUNTY TOTAL SHEETS	3869 07-00009-00-RB McHENRY 14 13
STA. TO STA.	FED. ROAD DIST. NO. ILLINOIS FED. AID PROJECT
	C-91-340-07 M-8003 (840)
	CONTRACT No: 83979

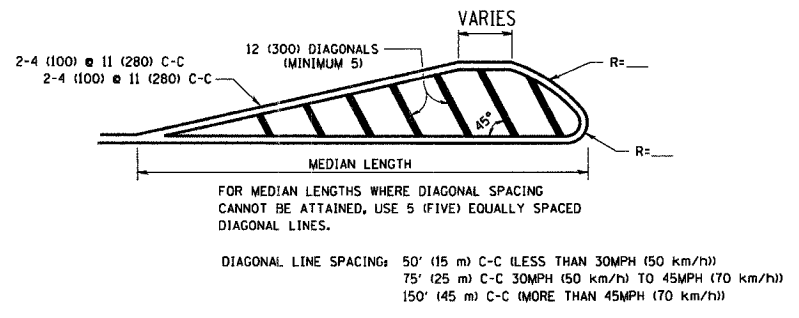
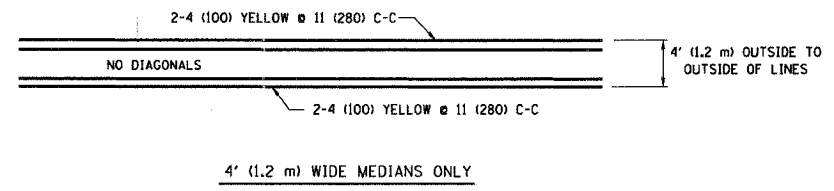


NOTE: MEDIANS WITH BARRIER CURB DO NOT REQUIRE AN EDGE LINE

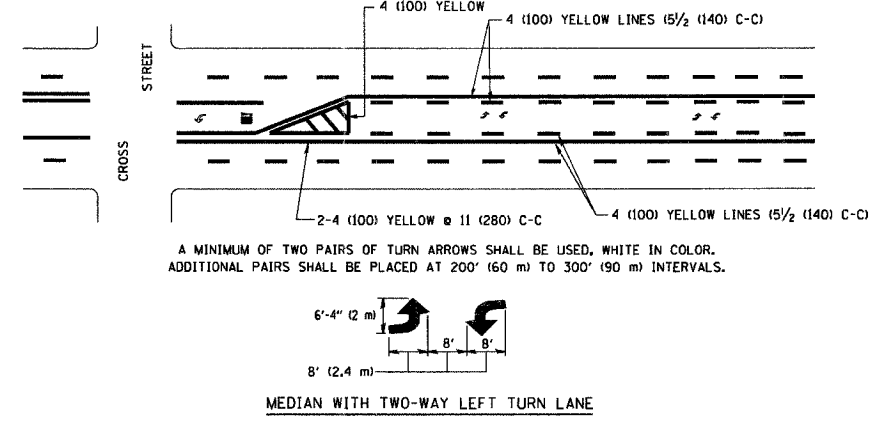
TYPICAL LANE AND EDGE LINE MARKING



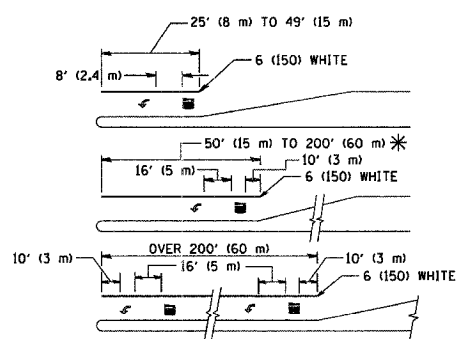
TYPICAL CROSSWALK MARKING



MEDIANS OVER 4' (1.2 m) WIDE



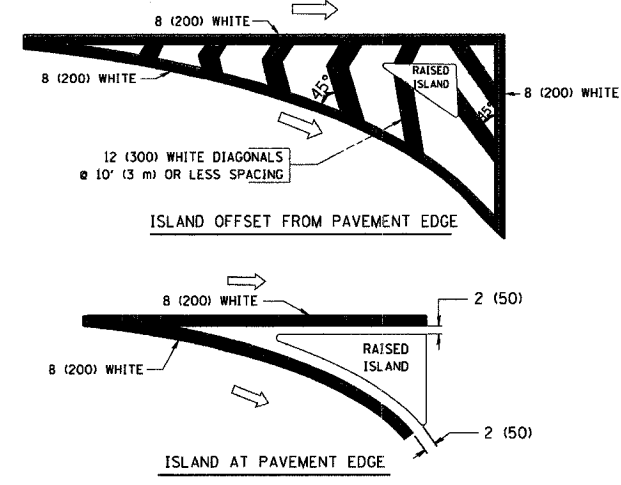
TYPICAL PAINTED MEDIAN MARKING



FULL SIZE LETTERS 8" (2.4 m) AND ARROWS SHALL BE USED. AREA = 15.6 SQ. FT. (1.5 m<sup>2</sup>) ONLY AREA = 20.8 SQ. FT. (1.9 m<sup>2</sup>) \* TURN LANES IN EXCESS OF 400' (120 m) IN LENGTH MAY HAVE AN ADDITIONAL SET OF ARROW - "ONLY" INSTALLED MIDWAY BETWEEN THE OTHER TWO SETS OF ARROW - "ONLY".

TYPICAL LEFT (OR RIGHT) TURN LANE

TYPICAL TURN LANE MARKING



TYPICAL ISLAND MARKING

TYPE OF MARKING	WIDTH OF LINE	PATTERN	COLOR	SPACING / REMARKS
CENTERLINE ON 2 LANE PAVEMENT	4 (100)	SKIP-DASH	YELLOW	10' (3 m) LINE WITH 30' (9 m) SPACE
CENTERLINE ON MULTI-LANE UNDIVIDED PAVEMENT	2 @ 4 (100)	SOLID	YELLOW	11 (280) C-C
NO PASSING ZONE LINES: FOR ONE DIRECTION	4 (100)	SOLID	YELLOW	5/2 (140) C-C FROM SKIP-DASH CENTERLINE
FOR BOTH DIRECTIONS	2 @ 4 (100)	SOLID	YELLOW	11 (280) C-C OMIT SKIP-DASH CENTERLINE BETWEEN
LANE LINES	4 (100)	SKIP-DASH	WHITE	10' (3 m) LINE WITH 30' (9 m) SPACE
ON FREEWAYS	5 (125)	SKIP-DASH	WHITE	
DOTTED LINES (EXTENSIONS OF CENTER, LANE OR TURN LANE MARKINGS)	SAME AS LINE BEING EXTENDED	SKIP-DASH	SAME AS LINE BEING EXTENDED	2' (600) LINE WITH 6' (1.8 m) SPACE
EDGE LINES	4 (100)	SOLID	YELLOW-LEFT WHITE-RIGHT	OUTLINE MOUNTABLE MEDIANS IN YELLOW; EDGE LINES ARE NOT USED NEXT TO BARRIER CURB
TURN LANE MARKINGS	6 (150) LINE; FULL SIZE LETTERS & SYMBOLS (8" (2.4m))	SOLID	WHITE	SEE TYPICAL TURN LANE MARKING DETAIL
TWO WAY LEFT TURN MARKING	2 @ 4 (100) EACH DIRECTION	SKIP-DASH AND SOLID	YELLOW	10' (3 m) LINE WITH 30' (9 m) SPACE FOR SKIP-DASH; 5/2 (140) C-C BETWEEN SOLID LINE AND SKIP-DASH LINE
	8" (2.4m) LEFT ARROW	IN PAIRS	WHITE	SEE TYPICAL TWO-WAY LEFT TURN MARKING DETAIL
CROSSWALK LINES (PEDESTRIAN) A. DIAGONALS (BIKE & EQUESTRIAN) B. LONGITUDINAL BARS (SCHOOL)	2 @ 6 (150) 12 (300) @ 45° 12 (300) @ 90°	SOLID SOLID SOLID	WHITE WHITE WHITE	NOT LESS THAN 6' (1.8 m) APART 2' (600) APART 2' (600) APART SEE TYPICAL CROSSWALK MARKING DETAILS.
STOP LINES	24 (600)	SOLID	WHITE	PLACE 4' (1.2 m) IN ADVANCE OF AND PARALLEL TO CROSSWALK, IF PRESENT. OTHERWISE, PLACE AT DESIRED STOPPING POINT. PARALLEL TO CROSSROAD CENTERLINE, WHERE POSSIBLE
PAINTED MEDIANS	2 @ 4 (100) WITH 12 (300) DIAGONALS @ 45° NO DIAGONALS USED FOR 4' (1.2 m) WIDE MEDIANS	SOLID	YELLOW; TWO WAY TRAFFIC WHITE; ONE WAY TRAFFIC	11 (280) C-C FOR THE DOUBLE LINE SEE TYPICAL PAINTED MEDIAN MARKING.
GORE MARKING AND CHANNELIZING LINES	8 (200) WITH 12 (300) DIAGONALS @ 45°	SOLID	WHITE	DIAGONALS: 15' (4.5 m) C-C (LESS THAN 30MPH (50 km/h)) 20' (6 m) C-C 30MPH (50 km/h) TO 45MPH (70 km/h) 30' (9 m) C-C (OVER 45MPH (70 km/h))
RAILROAD CROSSING	24 (600) TRANSVERSE LINES; "RR" IS 6" (1.8 m) LETTERS; 16 (400) LINE FOR "X"	SOLID	WHITE	SEE STATE STANDARD 780001 AREA OF: "R"=3.6 SQ. FT. (0.33 m <sup>2</sup> ) EACH "X"=54.0 SQ. FT. (5.0 m <sup>2</sup> )
SHOULDER DIAGONALS	12 (300) @ 45°	SOLID	WHITE - RIGHT YELLOW - LEFT	50' (15 m) C-C (LESS THAN 30MPH (50 km/h)) 75' (25 m) C-C (30 MPH (50 km/h) TO 45MPH (70 km/h)) 150' (45 m) C-C (OVER 45MPH (70 km/h))

FOR FURTHER DETAILS ON PAVEMENT MARKING REFER TO STANDARD SPECIFICATIONS FOR ROAD AND BRIDGE CONSTRUCTION AND STATE STANDARD 780001.

All dimensions are in inches (millimeters) unless otherwise shown.

REVISIONS	
NAME	DATE
EVERS	03-19-90
T. RAMMACHER	10-27-94
ALEX HOUSEH	10-09-96
ALEX HOUSEH	10-17-96
T. RAMMACHER	01-06-00

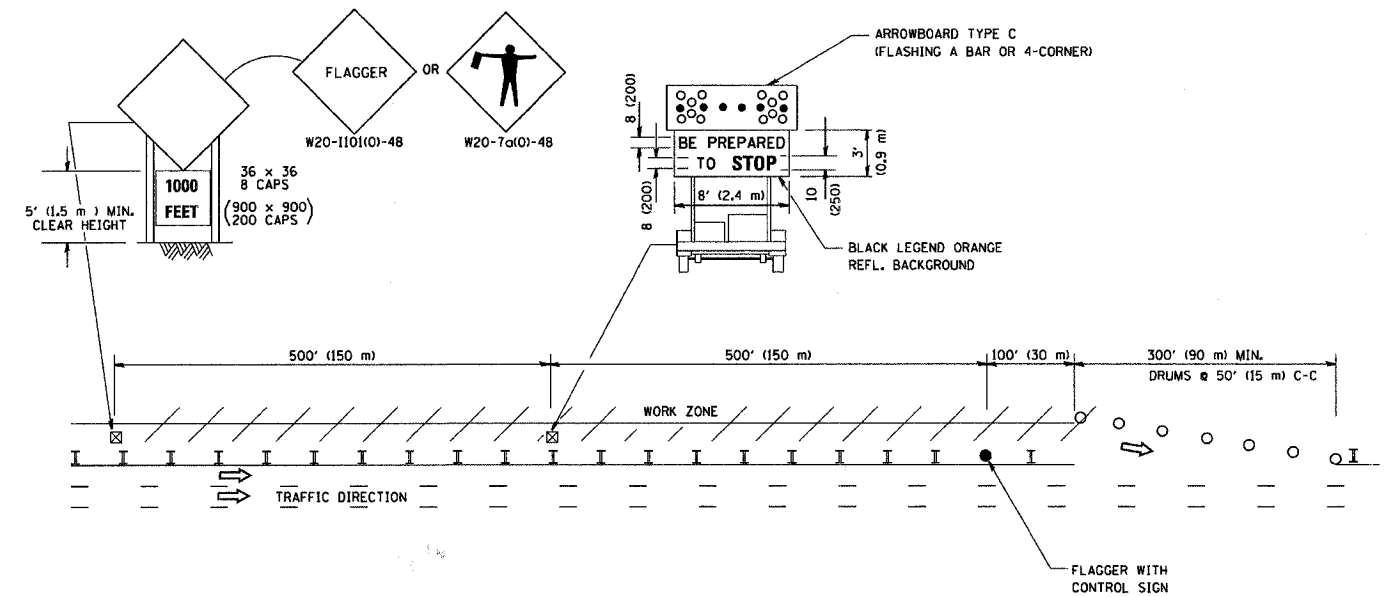
ILLINOIS DEPARTMENT OF TRANSPORTATION  
DISTRICT ONE  
TYPICAL PAVEMENT MARKINGS  
SCALE: NONE  
DRAWN BY CADD  
CHECKED BY  
TC-13

PLOT DATE = 3/6/2007  
FILE NAME = K:\data\std\std3.dgn  
PLOT SCALE = 80.000  
USER NAME = bauerd

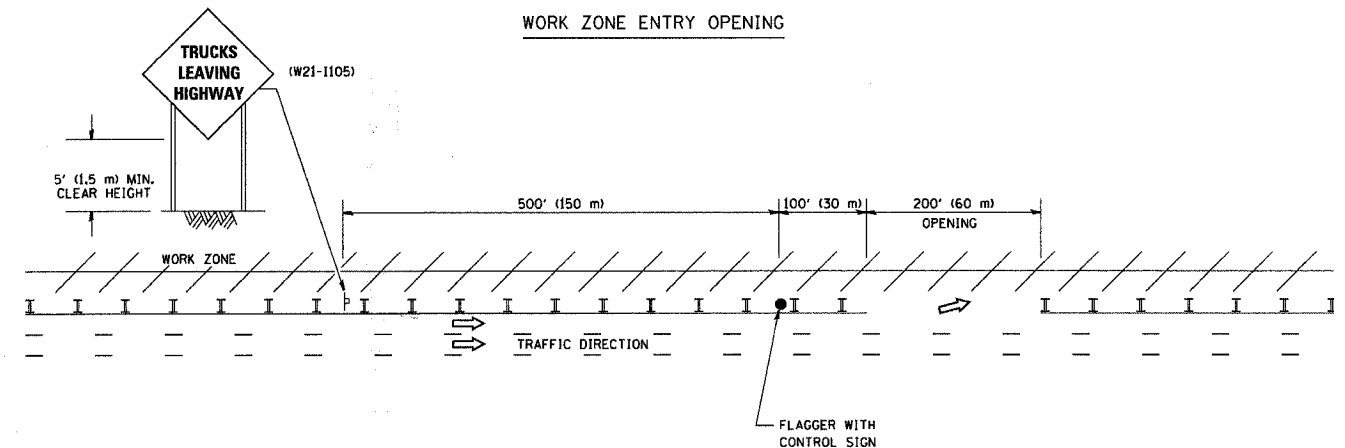
F.A. RTE.	SECTION	COUNTY	TOTAL SHEETS	SHEET NO.
3869	07-00009-00-RS	McHENRY	14	14
STA.		TO STA.		
FED. ROAD DIST. NO.	ILLINOIS	FED. AID PROJECT		
C-91-340-07		M-8003 (840)		
CONTRACT No: 83979				

SIGNING FOR FLAGGING OPERATIONS AT WORK ZONE OPENINGS

WORK ZONE EXIT OPENING



WORK ZONE ENTRY OPENING



NOTES:

1. The Arrowboard, the Flagger Ahead trailer mounted sign, and the Trucks Leaving Highway sign shall be removed or turned away from traffic and the exit and entry openings shall be closed when the flagging operation ceases.
2. Work Zone Exit Openings should be a minimum of one half mile apart.
3. Exiting the work zone at any place other than at a Work Zone Exit Opening will be prohibited.
4. All vehicles shall enter the work zone at entry openings, using their turn signals to warn motorists

ALL DIMENSIONS ARE IN INCHES (MILLIMETERS) UNLESS OTHERWISE SHOWN

REVISIONS	
NAME	DATE
DWS	8/98
JAF	4/03
JAF	2/06
SPB	1/07

ILLINOIS DEPARTMENT OF TRANSPORTATION  
SIGNING FOR FLAGGING OPERATIONS  
AT WORK ZONE OPENINGS

SCALE: NONE

DRAWN BY CADD

CHECKED BY

TC-18