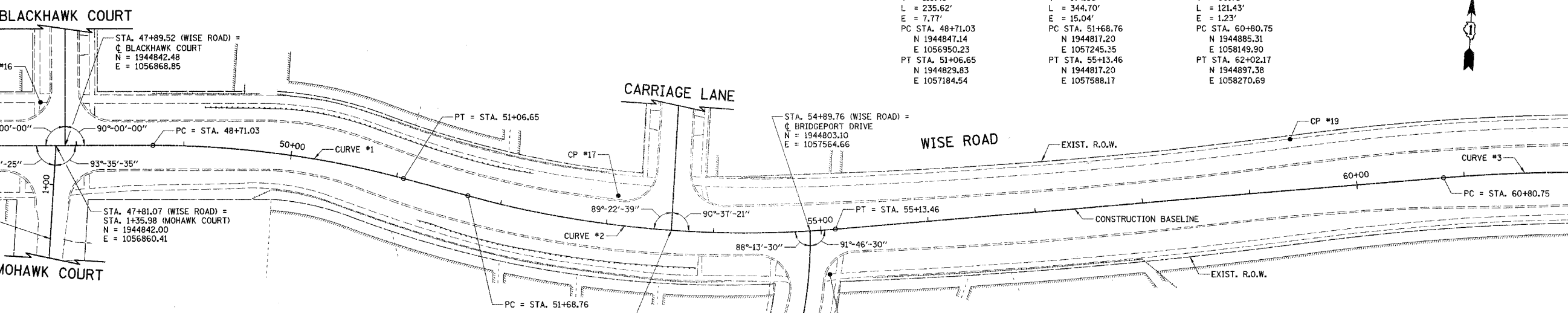
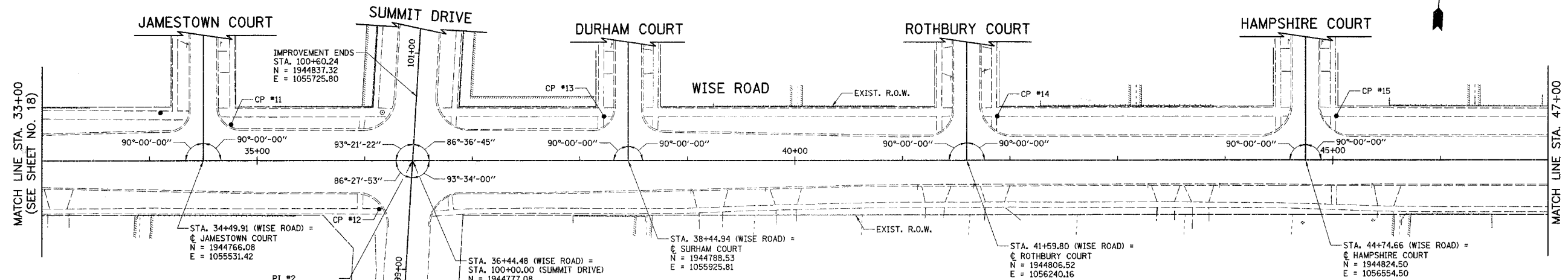


F.A.U. RTE.	SECTION	COUNTY	TOTAL SHEETS	SHEET NO.
1338	05-00083-00-FF	COOK	167	19
ALIGNMENT, TIES & BENCHMARKS				
FED. ROAD DIST. NO. 7 ILLINOIS		FED. AID PROJECT M-8003(512)		



CURVE #1	CURVE #2	CURVE #3
PI STA. 49+89.52 N 1944853.91 E 1057068.52 Δ = 15°-00'-00.00" D = 6°-21'-58.31" R = 900.00' T = 118.49' L = 235.62' E = 7.77'	PI STA. 53+42.84 N 1944781.83 E 1057415.80 Δ = 19°-45'-00.00" D = 5°-43'-46.48" R = 1000.00' T = 174.08' L = 344.70' E = 15.04'	PI STA. 61+41.49 N 1944893.79 E 1058210.05 Δ = 4°-38'-17.33" D = 3°-49'-10.99" R = 1500.00' T = 60.75' L = 121.43' E = 1.23'
PC STA. 48+71.03 N 1944847.14 E 1056950.23 PT STA. 51+06.65 N 1944829.83 E 1057184.54	PC STA. 51+68.76 N 1944817.20 E 1057245.35 PT STA. 55+13.46 N 1944817.20 E 1057588.17	PC STA. 60+80.75 N 1944885.31 E 1058149.90 PT STA. 62+02.17 N 1944897.38 E 1058270.69



BENCHMARKS/CONTROL POINTS

CP #11 IRON ROD SET w/RED CAP EL = 768.19 STA. 34+75.58, 33.87' LT N = 1944801.34 E = 1055555.14	CP #14 CROSS NOTCH SET EL = 768.19 STA. 41+88.07, 41.00' RT N = 1944849.07 E = 1056266.04	CP #17 IRON ROD SET w/RED CAP EL = 742.38 STA. 53+07.86, 26.73' LT N = 1944825.16 E = 1057384.83
CP #12 CROSS NOTCH SET EL = 765.18 STA. 36+13.43, 44.27' RT N = 1944731.13 E = 1055697.19	CP #15 CROSS NOTCH SET EL = 763.63 STA. 45+03.15, 41.01' LT N = 1944867.07 E = 1056580.61	CP #18 CROSS NOTCH SET EL = 743.02 STA. 55+05.23, 41.21' RT N = 1944764.16 E = 1057585.43
CP #13 CROSS NOTCH SET EL = 763.97 STA. 38+22.31, 41.29' LT N = 1944828.47 E = 1055900.86	CP #16 CROSS NOTCH SET EL = 759.15 STA. 47+66.62, 40.48' LT N = 1944881.59 E = 1056843.68	CP #19 CROSS NOTCH SET EL = 743.02 STA. 59+41.48, 47.03' LT N = 1944912.45 E = 1058005.44

ILLINOIS DEPARTMENT OF TRANSPORTATION

ALIGNMENT, TIES & BENCHMARKS

WISE ROAD

SCALE IN FEET

DATE: 9/28/07
DESIGNED BY: DJK
CHECKED BY: JRV