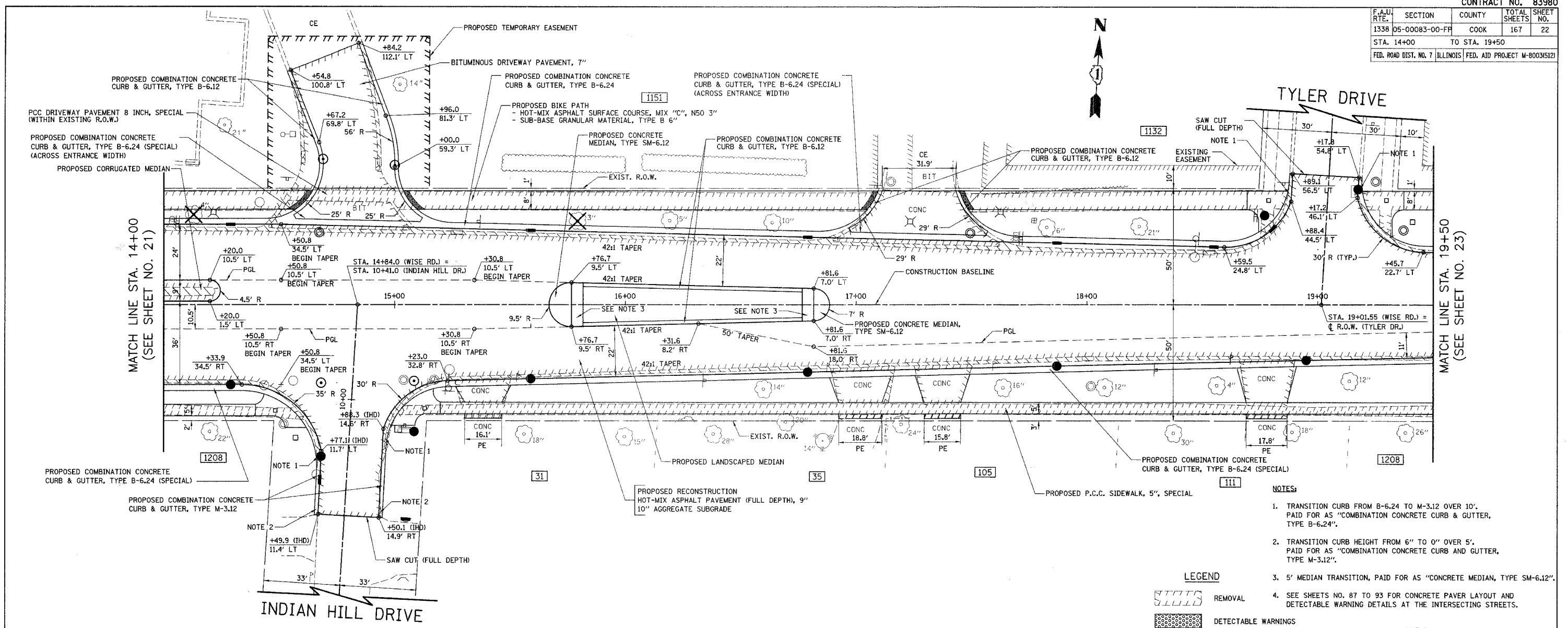


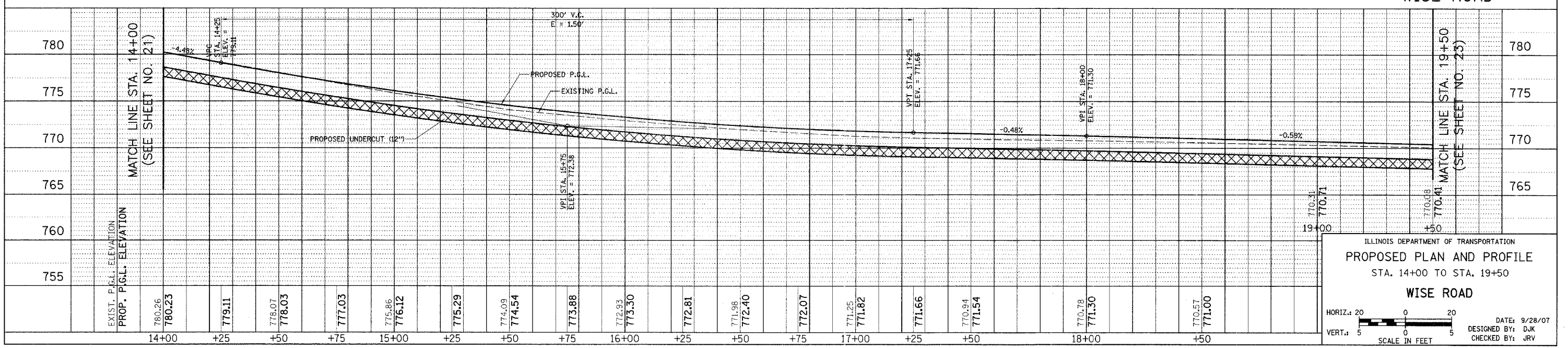
F.A.U. RTE.	SECTION	COUNTY	TOTAL SHEETS	SHEET NO.
1338	05-00083-00-FF	COOK	167	22
STA. 14+00		TO STA. 19+50		
FED. ROAD DIST. NO. 7 ILLINOIS FED. AID PROJECT W-800345121				



- NOTES:**
1. TRANSITION CURB FROM B-6.24 TO M-3.12 OVER 10'. PAID FOR AS "COMBINATION CONCRETE CURB & GUTTER, TYPE B-6.24".
 2. TRANSITION CURB HEIGHT FROM 6" TO 0" OVER 5'. PAID FOR AS "COMBINATION CONCRETE CURB AND GUTTER, TYPE M-3.12".
 3. 5' MEDIAN TRANSITION, PAID FOR AS "CONCRETE MEDIAN, TYPE SM-6.12".
 4. SEE SHEETS NO. 87 TO 93 FOR CONCRETE PAVEMENT LAYOUT AND DETECTABLE WARNING DETAILS AT THE INTERSECTING STREETS.

LEGEND

	REMOVAL
	DETECTABLE WARNINGS



ILLINOIS DEPARTMENT OF TRANSPORTATION
PROPOSED PLAN AND PROFILE
 STA. 14+00 TO STA. 19+50
WISE ROAD

HORIZ. 1" = 20'
 VERT. 1" = 5'
 SCALE IN FEET

DATE: 9/28/07
 DESIGNED BY: DJK
 CHECKED BY: JRV