

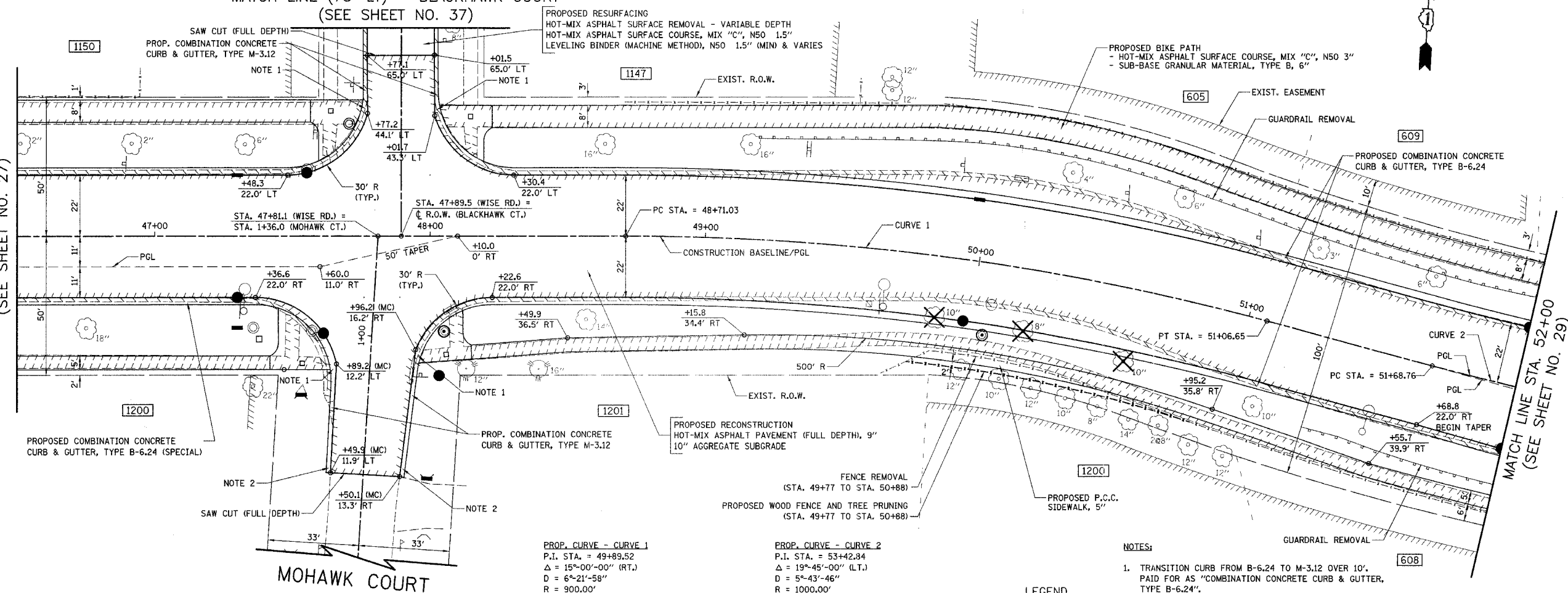
F.A.U. RTE.	SECTION	COUNTY	TOTAL SHEETS NO.
1338	05-00083-00-FF	COOK	167
STA. 46+50		TO STA. 52+00	
FED. ROAD DIST. NO. 7		ILLINOIS	FED. AID PROJECT M-8003(5)22



MATCH LINE (75' LT) - BLACKHAWK COURT  
(SEE SHEET NO. 37)

MATCH LINE STA. 46+50  
(SEE SHEET NO. 27)

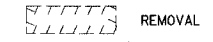
MATCH LINE STA. 52+00  
(SEE SHEET NO. 29)



**PROP. CURVE - CURVE 1**  
 P.I. STA. = 49+89.52  
 $\Delta = 15^\circ-00'-00"$  (RT.)  
 $D = 6^\circ-21'-58"$   
 $R = 900.00'$   
 $T = 118.49'$   
 $L = 235.62'$   
 $E = 7.77'$   
 P.C. STA. = 48+71.03  
 P.T. STA. = 51+06.65

**PROP. CURVE - CURVE 2**  
 P.I. STA. = 53+42.84  
 $\Delta = 19^\circ-45'-00"$  (LT.)  
 $D = 5^\circ-43'-46"$   
 $R = 1000.00'$   
 $T = 174.08'$   
 $L = 344.70'$   
 $E = 15.04'$   
 P.C. STA. = 51+68.76  
 P.T. STA. = 55+13.46

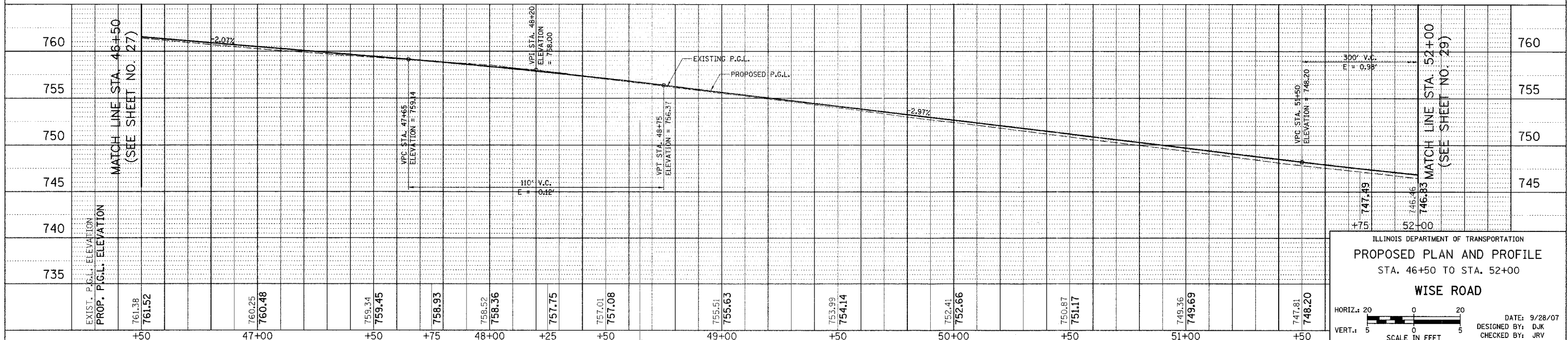
**LEGEND**



REMOVAL

- NOTES:**
- TRANSITION CURB FROM B-6.24 TO M-3.12 OVER 10'. PAID FOR AS "COMBINATION CONCRETE CURB & GUTTER, TYPE B-6.24".
  - TRANSITION CURB HEIGHT FROM 6" TO 0" OVER 5'. PAID FOR AS "COMBINATION CONCRETE CURB AND GUTTER, TYPE M-3.12".
  - SEE SHEETS NO. 87 TO 93 FOR CONCRETE PAVER LAYOUT AND DETECTABLE WARNING DETAILS AT THE INTERSECTING STREETS.

WISE ROAD



ILLINOIS DEPARTMENT OF TRANSPORTATION  
**PROPOSED PLAN AND PROFILE**  
 STA. 46+50 TO STA. 52+00  
**WISE ROAD**

HORIZ.: 20  
 VERT.: 5  
 SCALE IN FEET

DATE: 9/28/07  
 DESIGNED BY: DJK  
 CHECKED BY: JRV