

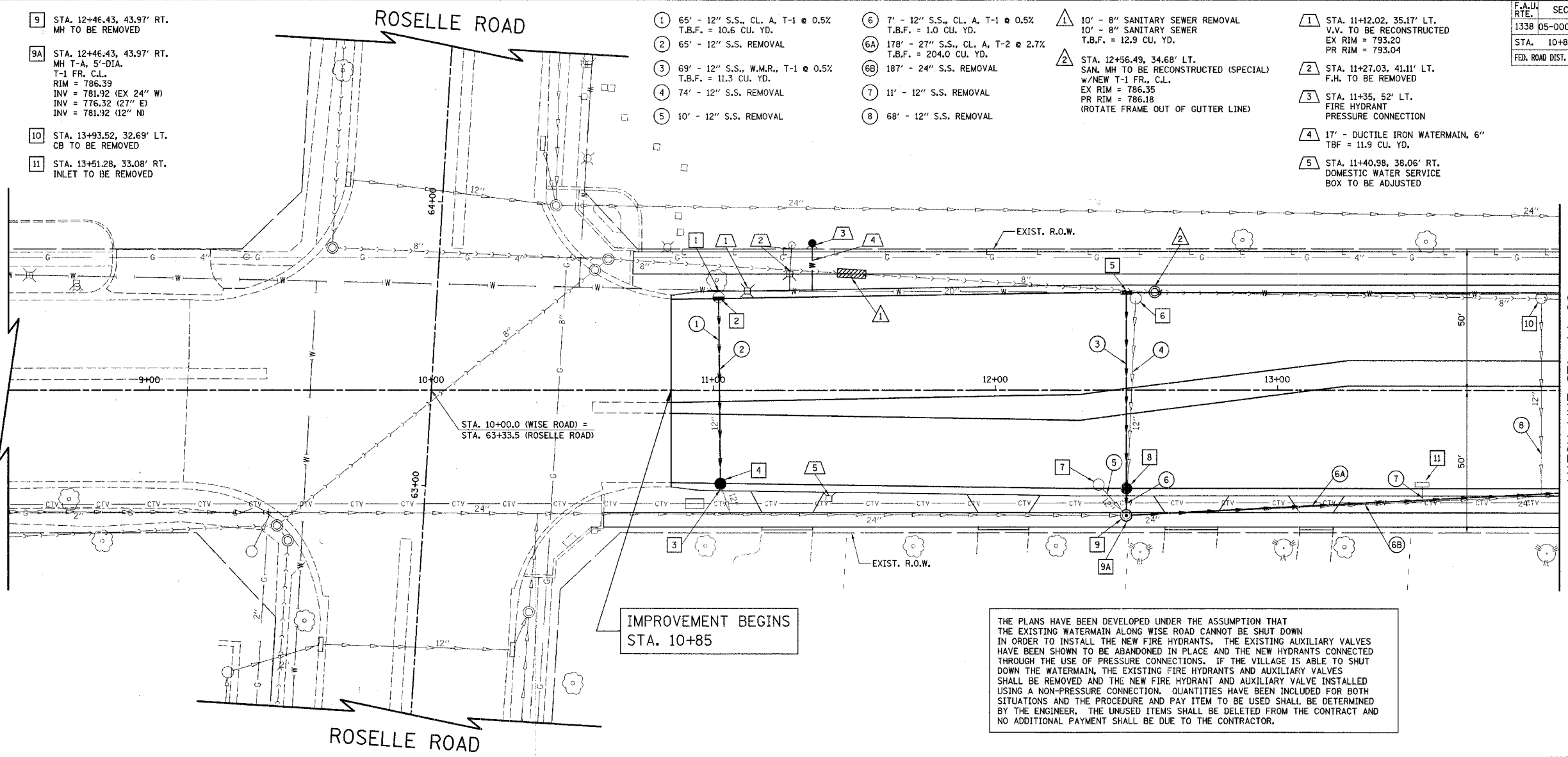
F.A.U. RTE.	SECTION	COUNTY	TOTAL SHEETS	SHEET NO.
1338	05-00083-00-FP	COOK	167	52
STA. 10+85		TO STA. 14+00		
FED. ROAD DIST. NO. 7 ILLINOIS FED. AID PROJECT M-800315121				

- 1 STA. 11+01.85, 32.92' LT. CB TO BE REMOVED
- 2 STA. 11+01.85, 32.47' LT. INLET T-A SPECIAL F & G RIM = 793.11 INV = 789.36 (12" S)
- 3 STA. 11+02.49, 32.85' RT. CB TO BE REMOVED
- 4 STA. 11+02.48, 32.64' RT. CB T-A, 4' DIA. SPECIAL F & G RIM = 793.08 INV = 787.70 (EX 12" SE) INV = 789.04 (12" N)
- 5 STA. 12+46.43, 34.50' LT. INLET T-A SPECIAL F & G RIM = 786.63 INV = 782.88 (12" S)
- 6 STA. 12+49.74, 32.45' LT. CB TO BE REMOVED
- 7 STA. 12+36.62, 33.09' RT. CB TO BE REMOVED
- 8 STA. 12+46.43, 34.5' RT. CB T-A 4' DIA. SPECIAL F & G RIM = 786.63 INV = 781.96 (12" S) INV = 782.54 (12" N)

- 9 STA. 12+46.43, 43.97' RT. MH TO BE REMOVED
- 9A STA. 12+46.43, 43.97' RT. MH T-A, 5'-DIA. T-1 FR. C.L. RIM = 786.39 INV = 781.92 (EX 24" W) INV = 776.32 (27" E) INV = 781.92 (12" N)
- 10 STA. 13+93.52, 32.69' LT. CB TO BE REMOVED
- 11 STA. 13+51.28, 33.08' RT. INLET TO BE REMOVED

- 1 65' - 12" S.S., CL. A, T-1 @ 0.5% T.B.F. = 10.6 CU. YD.
- 2 65' - 12" S.S. REMOVAL
- 3 69' - 12" S.S., W.M.R., T-1 @ 0.5% T.B.F. = 11.3 CU. YD.
- 4 74' - 12" S.S. REMOVAL
- 5 10' - 12" S.S. REMOVAL
- 6 7' - 12" S.S., CL. A, T-1 @ 0.5% T.B.F. = 1.0 CU. YD.
- 6A 178' - 27" S.S., CL. A, T-2 @ 2.7% T.B.F. = 204.0 CU. YD.
- 6B 187' - 24" S.S. REMOVAL
- 7 11' - 12" S.S. REMOVAL
- 8 68' - 12" S.S. REMOVAL
- 1 10' - 8" SANITARY SEWER REMOVAL 10' - 8" SANITARY SEWER T.B.F. = 12.9 CU. YD.
- 2 STA. 12+56.49, 34.68' LT. SAN. MH TO BE RECONSTRUCTED (SPECIAL) w/NEW T-1 FR., C.L. EX RIM = 786.35 PR RIM = 786.18 (ROTATE FRAME OUT OF GUTTER LINE)

- 1 STA. 11+12.02, 35.17' LT. V.V. TO BE RECONSTRUCTED EX RIM = 793.20 PR RIM = 793.04
- 2 STA. 11+27.03, 41.11' LT. F.H. TO BE REMOVED
- 3 STA. 11+35, 52' LT. FIRE HYDRANT PRESSURE CONNECTION
- 4 17' - DUCTILE IRON WATERMAIN, 6" TBF = 11.9 CU. YD.
- 5 STA. 11+40.98, 38.06' RT. DOMESTIC WATER SERVICE BOX TO BE ADJUSTED

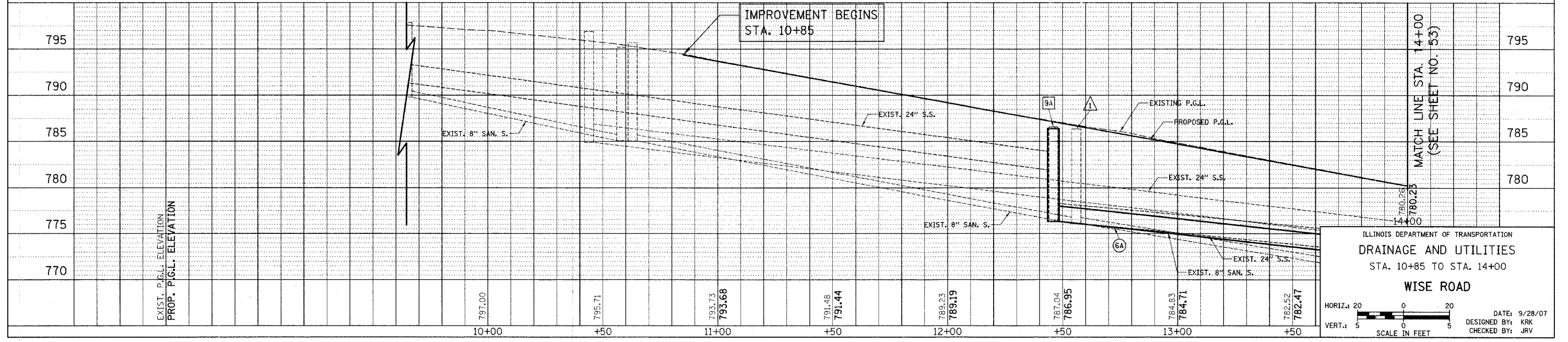


IMPROVEMENT BEGINS STA. 10+85

THE PLANS HAVE BEEN DEVELOPED UNDER THE ASSUMPTION THAT THE EXISTING WATERMAIN ALONG WISE ROAD CANNOT BE SHUT DOWN IN ORDER TO INSTALL THE NEW FIRE HYDRANTS. THE EXISTING AUXILIARY VALVES HAVE BEEN SHOWN TO BE ABANDONED IN PLACE AND THE NEW HYDRANTS CONNECTED THROUGH THE USE OF PRESSURE CONNECTIONS. IF THE VILLAGE IS ABLE TO SHUT DOWN THE WATERMAIN, THE EXISTING FIRE HYDRANTS AND AUXILIARY VALVES SHALL BE REMOVED AND THE NEW FIRE HYDRANT AND AUXILIARY VALVE INSTALLED USING A NON-PRESSURE CONNECTION. QUANTITIES HAVE BEEN INCLUDED FOR BOTH SITUATIONS AND THE PROCEDURE AND PAY ITEM TO BE USED SHALL BE DETERMINED BY THE ENGINEER. THE UNUSED ITEMS SHALL BE DELETED FROM THE CONTRACT AND NO ADDITIONAL PAYMENT SHALL BE DUE TO THE CONTRACTOR.

MATCH LINE STA. 14+00 (SEE SHEET NO. 53)

WISE ROAD



MATCH LINE STA. 14+00 (SEE SHEET NO. 53)

ILLINOIS DEPARTMENT OF TRANSPORTATION
 DRAINAGE AND UTILITIES
 STA. 10+85 TO STA. 14+00
 WISE ROAD

HORIZ. 20
 VERT. 5
 SCALE IN FEET

DATE: 9/28/07
 DESIGNED BY: KRK
 CHECKED BY: JRJ