

F.A.U. RTE.	SECTION	COUNTY	TOTAL SHEETS	SHEET NO.
1338	05-00083-00-FP	COOK	167	58
STA. 41+00		TO STA. 46+50		
FED. ROAD DIST. NO. 7 ILLINOIS FED. AID PROJECT M-80035121				



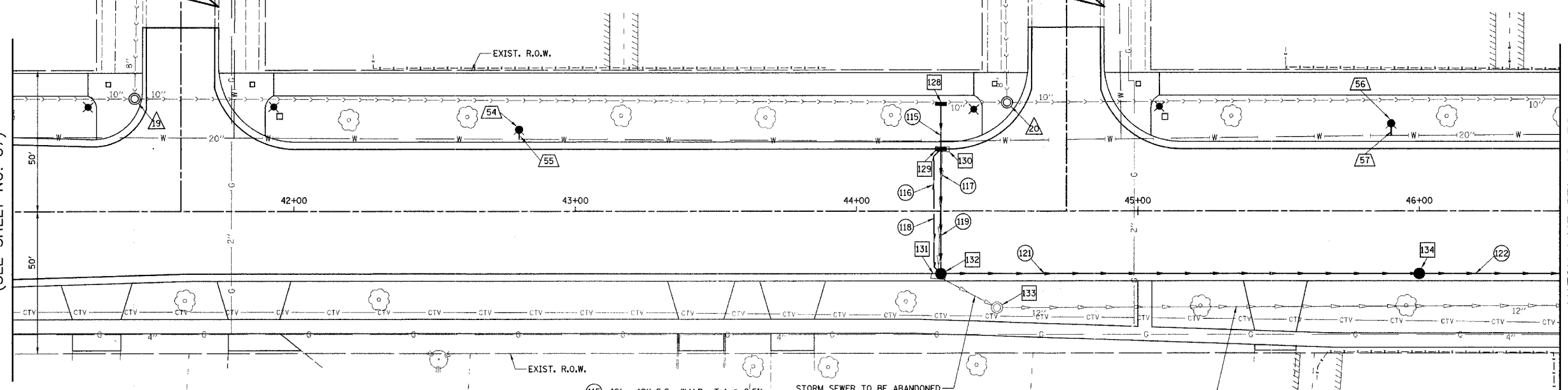
- 128 STA. 44+30, 38' LT. INLET T-A T-B GRATE RIM = 764.48 INV = 762.27 (12" S)
- 129 STA. 44+30, 22' LT. INLET T-B SPECIAL F & G RIM = 765.76 INV = 762.21 (12" N) INV = 762.01 (12" S) INV = 762.26 (4" SW)
- 130 STA. 44+30.55, 21.96' LT. INLET TO BE REMOVED
- 131 STA. 44+29.02, 23.00' RT. INLET TO BE REMOVED
- 132 STA. 44+30, 22' RT. CB T-A, 4' DIA. SPECIAL F & G RIM = 766.20 INV = 761.79 (12" N) INV = 761.07 (12" E) INV = 762.70 (4" NW)
- 133 STA. 44+49.94, 33.98' RT. MH TO BE REMOVED
- 134 STA. 46+00, 22' RT. CB T-A, 4' DIA. SPECIAL F & G RIM = 762.33 INV = 758.58 (12" W) INV = 758.41 (12" E)
- 135 NOT USED

ROTHBURY COURT

HAMPSHIRE COURT

MATCH LINE STA. 41+00
(SEE SHEET NO. 57)

MATCH LINE STA. 46+50
(SEE SHEET NO. 59)

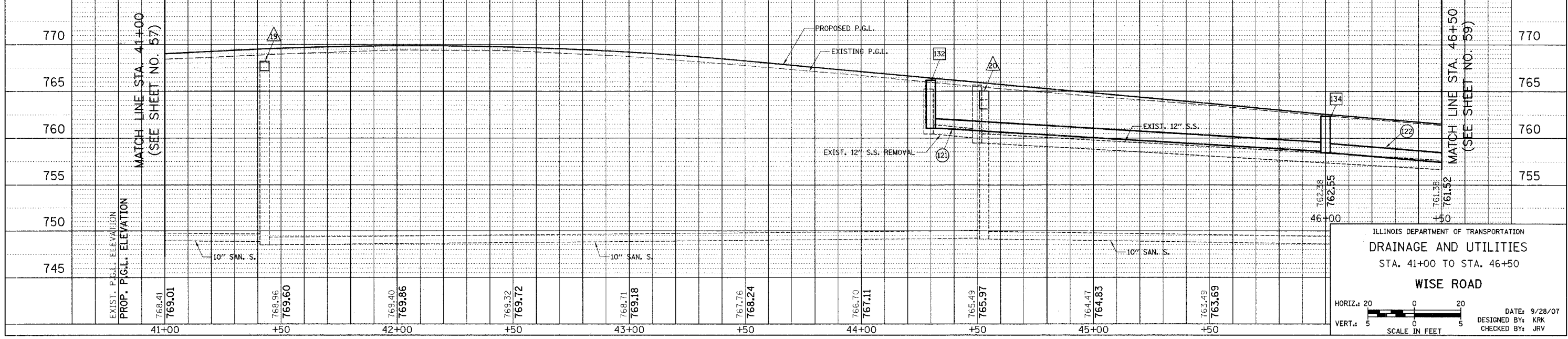


- 54 STA. 42+80, 29' LT. FIRE HYDRANT PRESSURE CONNECTION
- 55 4'-DUCTILE IRON WATERMAIN 6" T.B.F. = 0.7 CU. YD.
- 56 STA. 45+90, 31' LT. FIRE HYDRANT PRESSURE CONNECTION
- 57 5'-DUCTILE IRON WATERMAIN 6" T.B.F. = 0 CU. YD.

- 115 12' - 12" S.S., W.M.R., T-1 @ 0.5% T.B.F. = 1.6 CU. YD.
- 116 22' - PIPE UNDERDRAIN, 4"
- 117 42' - 12" S.S. REMOVAL
- 118 22' - PIPE UNDERDRAIN, 4"
- 119 44' - 12" S.S., CL. A, T-1 @ 0.5% T.B.F. = 8.1 CU. YD.
- 120 NOT USED
- 121 166' - 12" S.S., CL. A, T-2 @ 1.5% T.B.F. = 37.6 CU. YD.
- 122 126' - 12" S.S., CL. A, T-1 @ 2.0% T.B.F. = 20.6 CU. YD.
- 123 NOT USED

- 19 STA. 41+43.37, 39.97' LT. SAN. MH TO BE RECONSTRUCTED (SPECIAL) EXIST. RIM = 768.03 PROP. RIM = 767.70 (ROTATE LID OUT OF DETECTABLE WARNINGS - AS DIRECTED BY ENGINEER)
- 20 STA. 44+53.49, 38.46' LT. SAN. MH TO BE ADJUSTED EXIST. RIM = 764.11 PROP. RIM = 764.80

WISE ROAD



ILLINOIS DEPARTMENT OF TRANSPORTATION
DRAINAGE AND UTILITIES
 STA. 41+00 TO STA. 46+50
WISE ROAD

HORIZ. 20
 VERT. 5

SCALE IN FEET

DATE: 9/28/07
 DESIGNED BY: KRK
 CHECKED BY: JRV