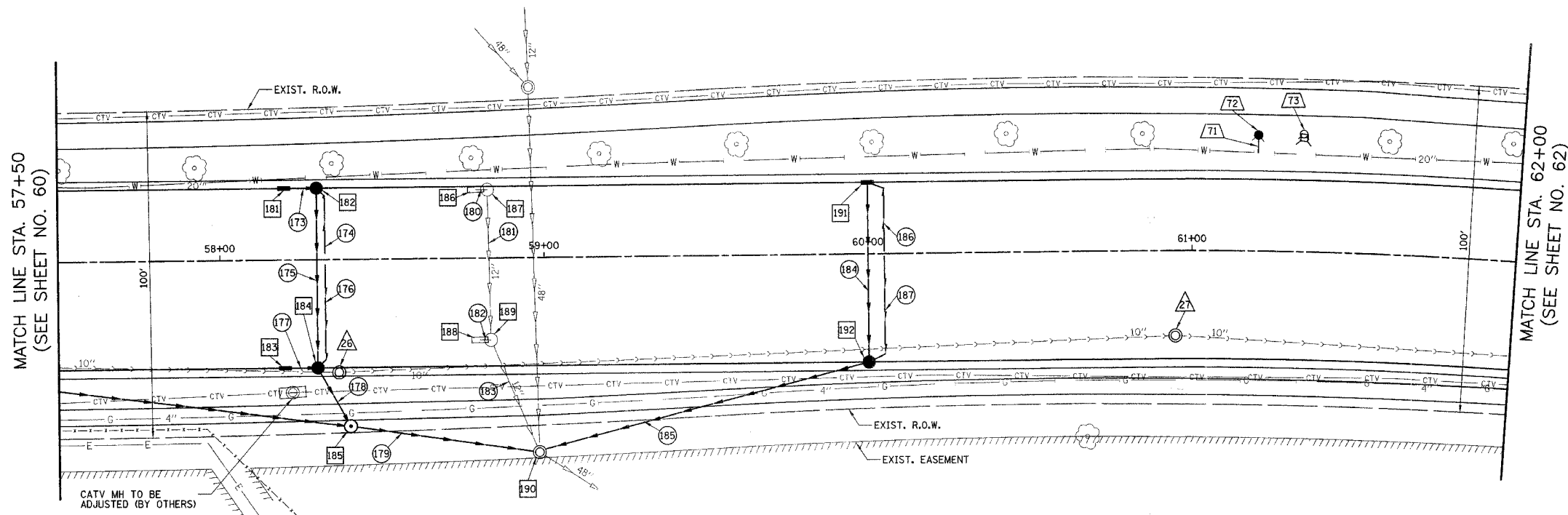


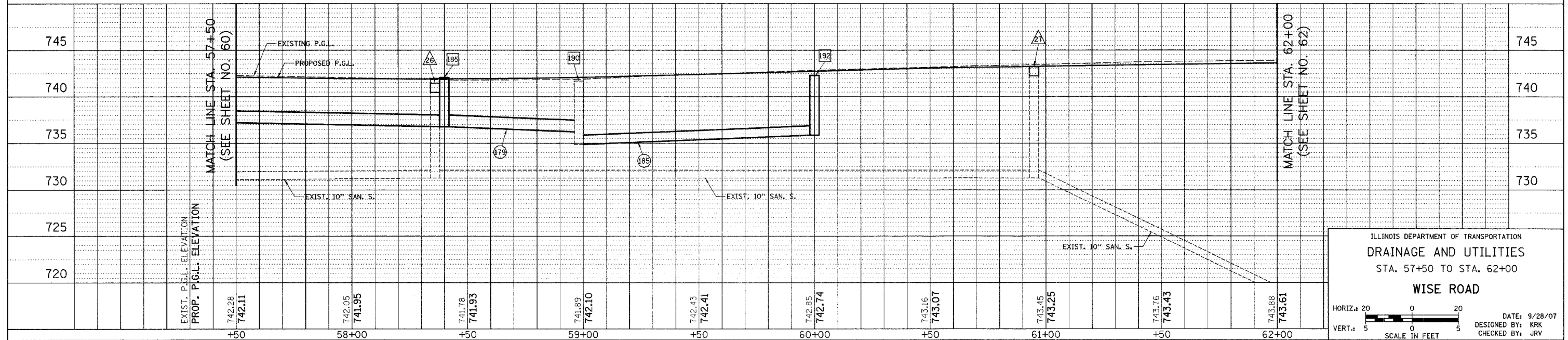
F.A.U. RTE.	SECTION	COUNTY	TOTAL SHEETS	SHEET NO.
1338	05-00083-00-FF	COOK	167	61
STA. 57+50		TO STA. 62+00		
FED. ROAD DIST. NO. 7		ILLINOIS FED. AID PROJECT M-8003(512)		

- 181 STA. 58+20, 22' LT. INLET T-A SPECIAL F & G RIM = 741.48 INV = 737.73 (12" E)
- 182 STA. 58+29.72, 22' LT. CB T-A, 4' DIA. SPECIAL F & G RIM = 741.46 INV = 737.70 (12" W) INV = 737.70 (12" S) INV = 737.96 (4" SE)
- 183 STA. 58+20, 33' RT. INLET T-A SPECIAL F & G RIM = 741.48 INV = 737.73 (12" E)
- 184 STA. 58+29.72, 33' RT. CB T-A, 4' DIA. SPECIAL F & G RIM = 741.46 INV = 737.43 (12" N) INV = 737.70 (12" W) INV = 737.23 (12" SE) INV = 737.74 (4" NE)
- 185 STA. 58+39.93, 51.12' RT. MH T-A, 4' DIA. T-1 FR., C.L. RIM = 742.06 INV = 737.15 (12" NW) INV = 736.80 (15" SE) INV = 736.80 (15" W)
- 186 STA. 58+79.17, 21.02' LT. INLET TO BE REMOVED
- 187 STA. 58+82.66, 21.00' LT. CB TO BE REMOVED
- 188 STA. 58+80.06, 25.01' RT. INLET TO BE REMOVED
- 189 STA. 58+83.44, 25.02' RT. CB TO BE REMOVED
- 190 STA. 58+98.11, 59.67' RT. MH TO BE ADJUSTED EX RIM = 741.68 PR RIM = 741.68 INV = 734.98 (EX. 48" N) INV = 734.88 (EX. 48" SE) INV = 734.88 (12" NE) INV = 736.25 (15" NW)
- 191 STA. 60+00, 22' LT. INLET T-A SPECIAL F & G RIM = 742.30 INV = 736.55 (12" S) INV = 738.80 (4" SE)
- 192 STA. 60+00, 33' RT. CB T-A, 4' DIA. SPECIAL F & G RIM = 742.30 INV = 737.88 (12" N) INV = 735.88 (12" SW) INV = 738.80 (4" NE)



- 71 6' - DUCTILE IRON WATERMAIN 6" T.B.F. = 0 CU. YD.
- 72 STA. 61+20, 35.5' LT. FIRE HYDRANT PRESSURE CONNECTION
- 73 STA. 61+33.66, 36.13' LT. F.H. TO BE REMOVED
- 173 7' - 12" S.S., W.M.R., T-1 @ 0.5% T.B.F. = 1.1 CU. YD.
- 174 22' - PIPE UNDERDRAIN, 4"
- 175 55' - 12" S.S., CL. A, T-1 @ 0.5% T.B.F. = 8.4 CU. YD.
- 176 33' - PIPE UNDERDRAIN, 4"
- 177 7' - 12" S.S., CL. A, T-1 @ 0.5% T.B.F. = 1.0 CU. YD.
- 178 15' - 12" S.S., CL. A, T-1 @ 0.5% T.B.F. = 1.0 CU. YD.
- 179 55' - 15" S.S., CL. A, T-2 @ 1.0% T.B.F. = 0 CU. YD.
- 180 1' - 12" S.S. REMOVAL
- 181 42' - 12" S.S. REMOVAL
- 182 1' - 12" S.S. REMOVAL
- 183 34' - 12" S.S. REMOVAL
- 184 55' - 12" S.S., CL. A, T-1 @ 1.2% T.B.F. = 10.2 CU. YD.
- 185 100' - 12" S.S., CL. A, T-2 @ 1.0% T.B.F. = 46.2 CU. YD.
- 186 24' - PIPE UNDERDRAIN, 4"
- 187 35' - PIPE UNDERDRAIN, 4"

- 26 STA. 58+36.48, 34.44' RT. SAN. MH TO BE RECONSTRUCTED EXIST. RIM = 741.99 PROP. RIM = 741.46
- 27 STA. 60+94.87, 26.00' RT. SAN. MH TO BE ADJUSTED EXIST. RIM = 743.08 PROP. RIM = 743.24



ILLINOIS DEPARTMENT OF TRANSPORTATION
DRAINAGE AND UTILITIES
STA. 57+50 TO STA. 62+00
WISE ROAD

HORIZ. 20
VERT. 5
SCALE IN FEET

DATE: 9/28/07
DESIGNED BY: KRK
CHECKED BY: JRJ