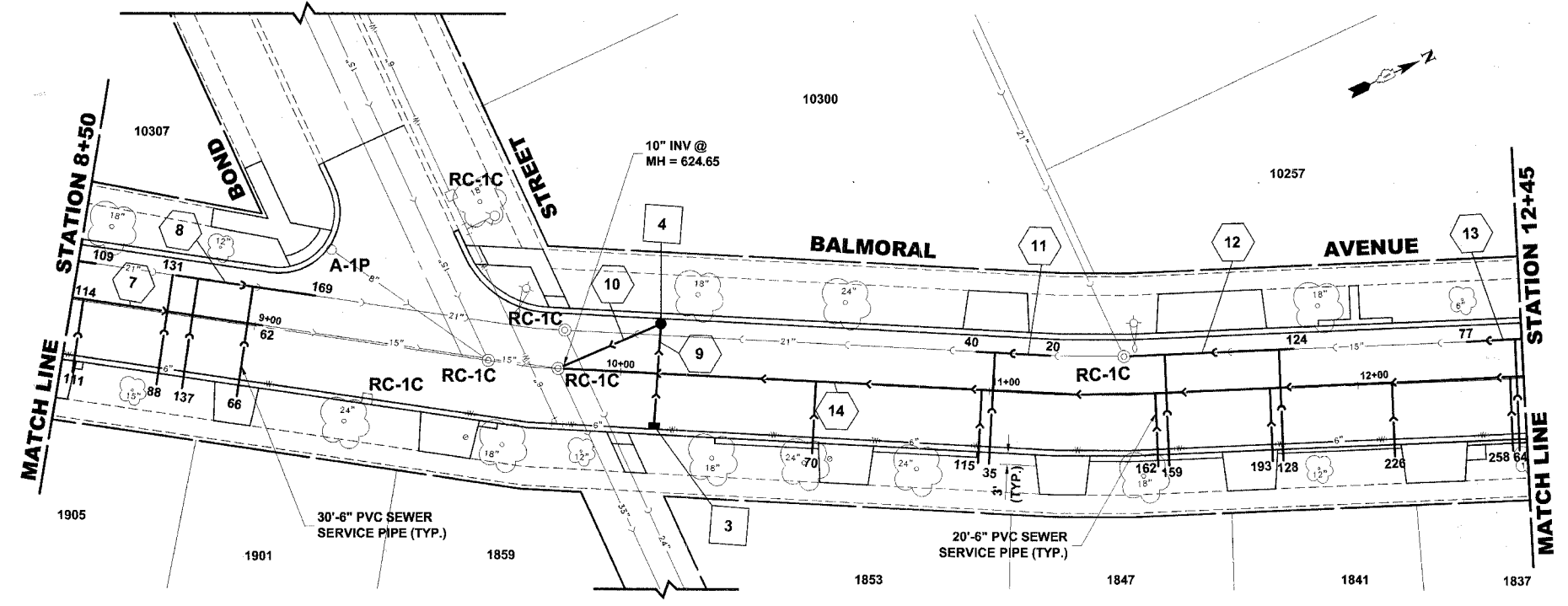


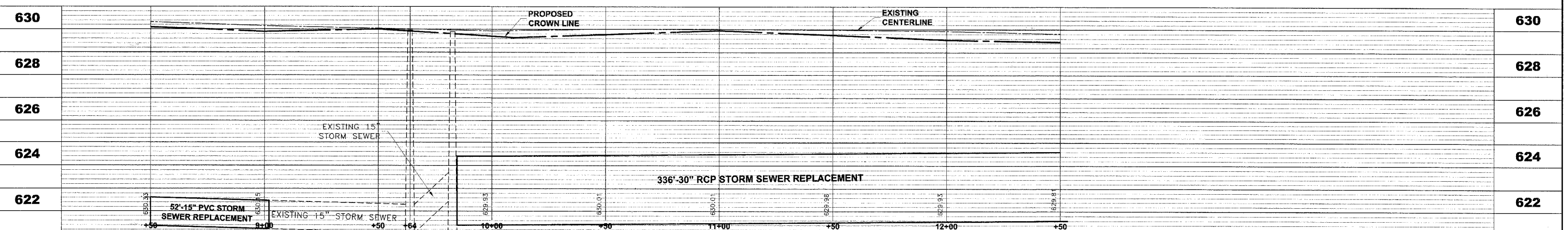
STRUC. NO.	STA.	OFFSET	TYPE	RIM ELEV.	INV. ELEV.
3	10+10	15' RT.	INLET, TYPE A, TYPE 1 FRAME, OPEN LID	628.85	625.35 NW
4	10+10	15' LT.	R.D. CATCH BASIN, 4' DIA. TYPE 1 FRAME, OPEN LID	629.05	625.05 SE 624.95 S

**EXISTING TOPOGRAPHY**



PIPE NO.	LENGTH	DIA.	TYPE	SLOPE	C.Y.T.B.
7	52'	15"	SS, PVC, SDR 26	0.21%	42.5
8	38'	21"	SAN. SEWER, PVC	0.26%	47.0
9	30'	10"	SS, PVC, SDR 26	1.00%	0.9
10	30'	10"	SS, PVC, SDR 26	1.00%	3.2
11	20'	21"	SAN. SEWER, PVC	0.13%	24.2
12	42'	15"	SAN. SEWER, PVC	0.12%	48.7
13	24'	15"	SAN. SEWER, PVC	0.12%	28.0
14	336'	30"	SS, TY-2, RCCP, CL-III	0.30%	374.2

**PROPOSED IMPROVEMENTS**



Drawing File: W:\Projects\133601\06 - Balmoral Avenue Phase 1\BAMORAL\_Balmo.dwg Oct 04, 2007 - 8:57am

**HANCOCK ENGINEERING**  
 Civil Engineers  
 Municipal Consultants  
 Established 1911

9933 Roosevelt Road  
 Westchester, Illinois 60154-2780  
 Phone: 708/865-0300  
 Fax: 708/865-1212

**BALMORAL AVENUE IMPROVEMENTS  
 VILLAGE OF WESTCHESTER, ILLINOIS**

**EXISTING AND PROPOSED  
 DRAINAGE AND UTILITIES  
 PLAN AND PROFILE**

SCALE: 1"=20'H; 1"=2'V  
 DRAWN BY: NAW/LEV/MK  
 BOOK NO.: 1394/1427/LS  
 DATE: 10-3-07  
 E.H.E. NO.: 838-06-16601

REVISION:

SHEET **19** OF **36**