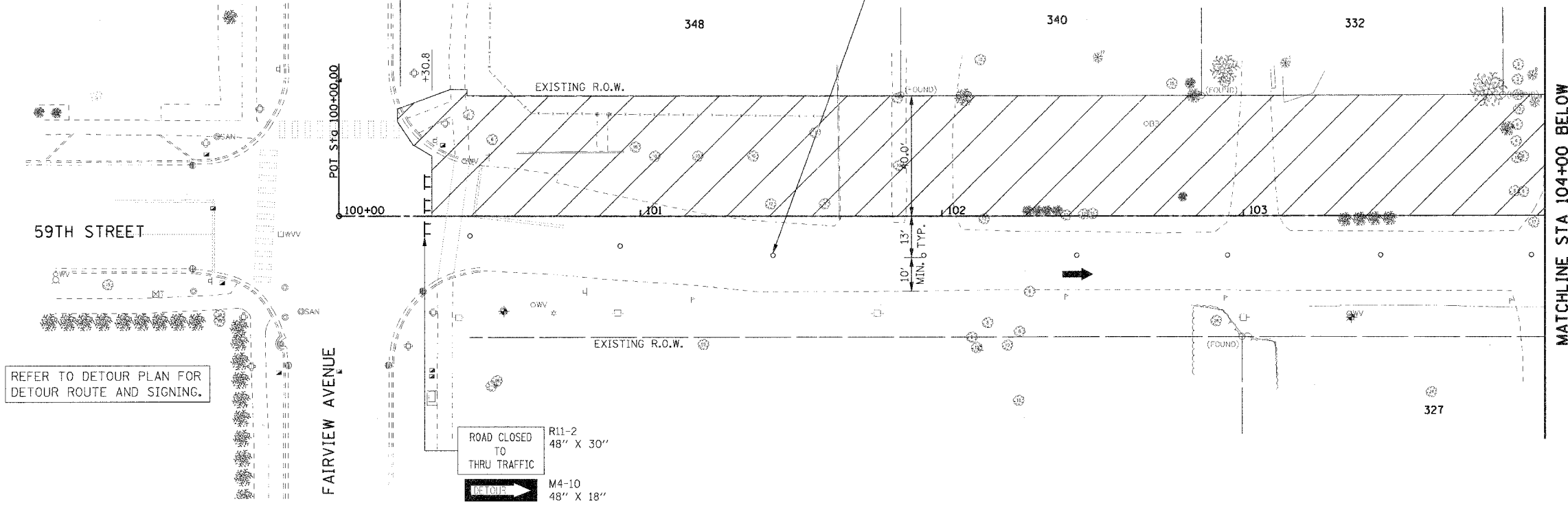


F.A.U. RTE.	SECTION	COUNTY	TOTAL SHEETS	SHEET NO.
1512	05-00093-00-WR	DUPAGE	72	12
STA. 100+00		TO STA. 109+00		
FED. ROAD DIST. NO. 1 ILLINOIS FED. AID PROJECT				
PROJECT NO.: M-8003 (699)				

PLAN	SURVEYED	BY	DATE
NOTE BOOK	ALIGNED		
NO.	CHECKED		
	BY		
	DATE		

ADVANCE SIGNING FOR ROAD CLOSURE AND
DETOUR ROUTE PER IDOT DISTRICT 1 STD TC21

TYPE II BARRICADE (50' C-C) WITH STEADY
BURN BIDIRECTIONAL LIGHT (TYP)

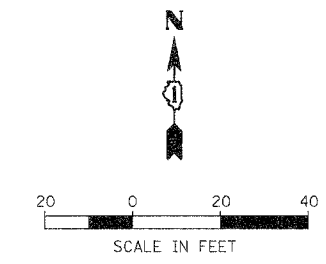


REFER TO DETOUR PLAN FOR
DETOUR ROUTE AND SIGNING.

ROAD CLOSED
TO
THRU TRAFFIC

R11-2
48" X 30"

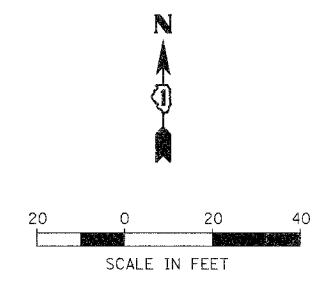
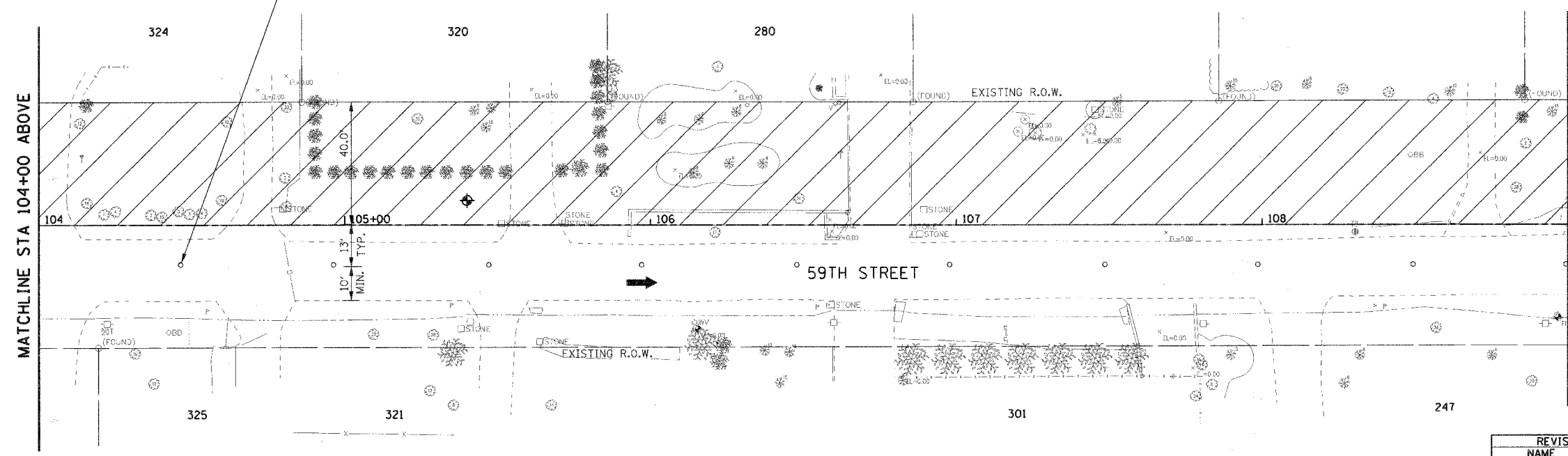
M4-10
48" X 18"



- LEGEND:
- CONSTRUCTION ZONE
 - DIRECTION OF TRAFFIC
 - TYPE II BARRICADE
 - TYPE III BARRICADE
 - MAINTENANCE OF TRAFFIC SIGNS

PROFILE	SURVEYED	BY	DATE
NOTE BOOK	ALIGNED		
NO.	CHECKED		
	BY		
	DATE		

TYPE II BARRICADE (50' C-C)
WITH STEADY BURN BIDIRECTIONAL
LIGHT (TYP)



REVISIONS		ILLINOIS DEPARTMENT OF TRANSPORTATION
NAME	DATE	
		VILLAGE OF WESTMONT 59TH STREET RECONSTRUCTION MAINTENANCE OF TRAFFIC, STAGE 1 SHEET 1 OF 2 SCALE: 1"=20' DATE: 09/21/07 DRAWN BY: JMT CHECKED BY: MAP

PLOT DATE: # DATE
FILE NAME: # FILE#
PLOT SCALE: # SCALE#
USER NAME: # USER#