

F.A.U. RTE.	SECTION	COUNTY	TOTAL SHEETS	SHEET NO.
1512	05-00093-00-WR	DUPAGE	72	20
STA. 100+00		TO STA. 104+00		
FED. ROAD DIST. NO. 1 ILLINOIS FED. AID PROJECT				
PROJECT NO.: M-8003 (699)				

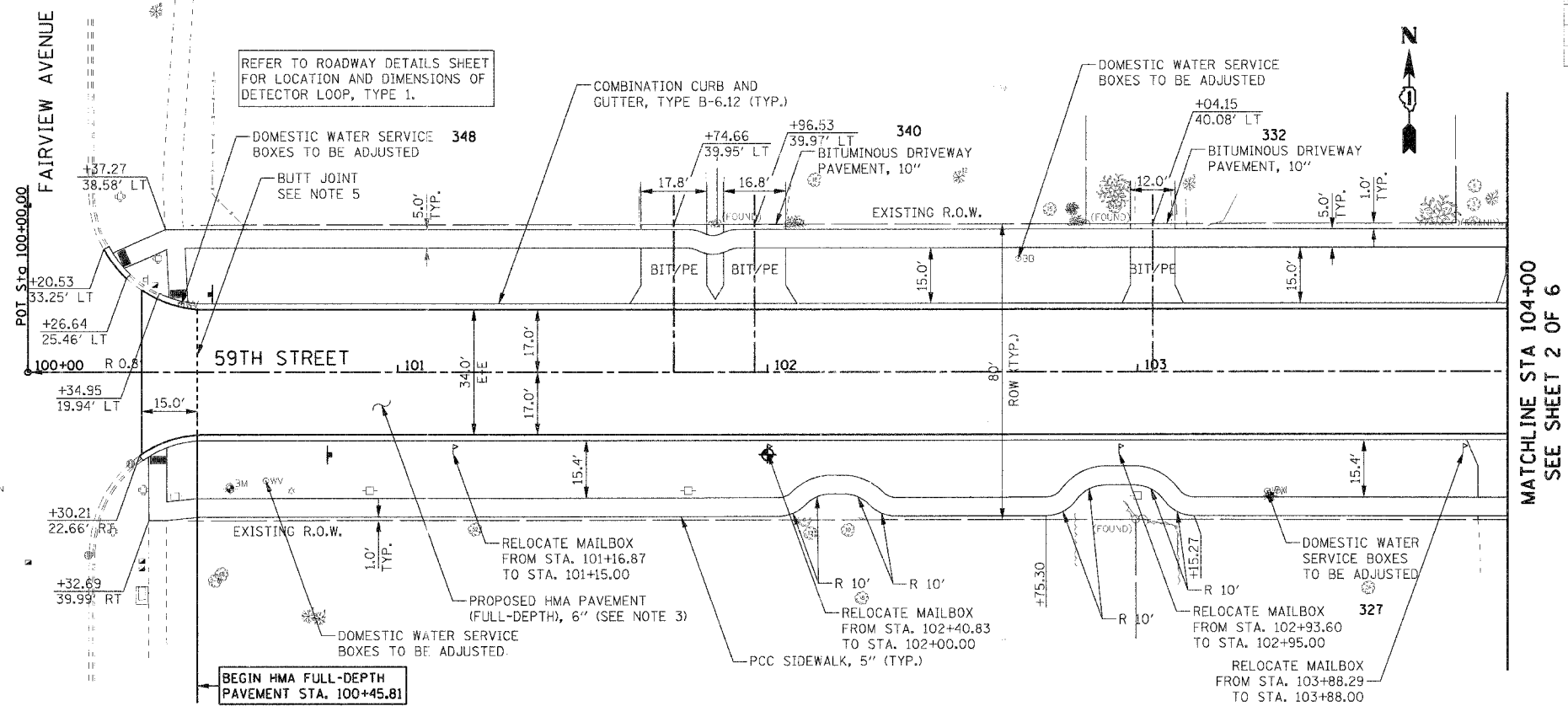
PROPOSED LEGEND:

- DETECTABLE WARNING (FOR ADA RAMPS)
- ▨ BIT/PE EXISTING DRIVEWAY PAVEMENT / DRIVEWAY TYPE

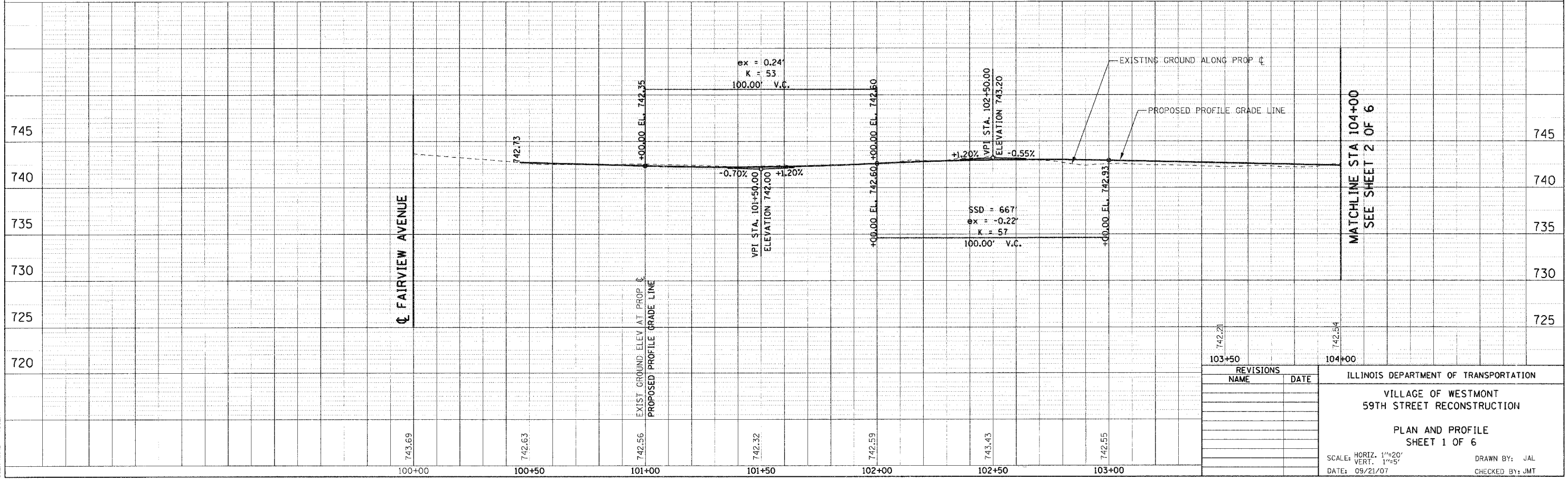
PLAN	DATE	BY
SURVEYED		
PLOTTED		
REVISIONS		
NOTE BOOK NO.		
FILE NAME		
SCALE		
USER NAME		

NOTES:

- CONTRACTOR SHALL REFER TO VILLAGE OF WESTMONT DETAIL DRAWING R-16-1 FOR PROPER PLACEMENT OF RELOCATED MAILBOXES AND DETAIL DRAWING R-7-2 FOR DRIVEWAY DESIGN STANDARDS.
- REFER TO PAVEMENT MARKING AND SIGNING PLAN SHEETS FOR RELOCATED SIGN PANELS AND POSTS.
- REFER TO TYPICAL SECTIONS FOR FULL-DEPTH HMA PAVEMENT COMPOSITION.
- THE PROPOSED SIDEWALK MUST EXTEND THROUGH ALL RESIDENTIAL DRIVEWAYS.
- REFER TO ROADWAY DETAILS FOR PROPOSED BUTT JOINT PAVEMENT.



PROFILE	DATE	BY
SURVEYED		
PLOTTED		
REVISIONS		
NOTE BOOK NO.		
FILE NAME		
SCALE		
USER NAME		



REVISIONS	
NAME	DATE

ILLINOIS DEPARTMENT OF TRANSPORTATION
 VILLAGE OF WESTMONT
 59TH STREET RECONSTRUCTION
 PLAN AND PROFILE
 SHEET 1 OF 6
 SCALE: HORIZ. 1"=20'
 VERT. 1"=5'
 DATE: 09/21/07
 DRAWN BY: JAL
 CHECKED BY: JMT