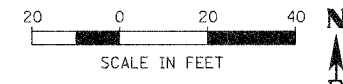


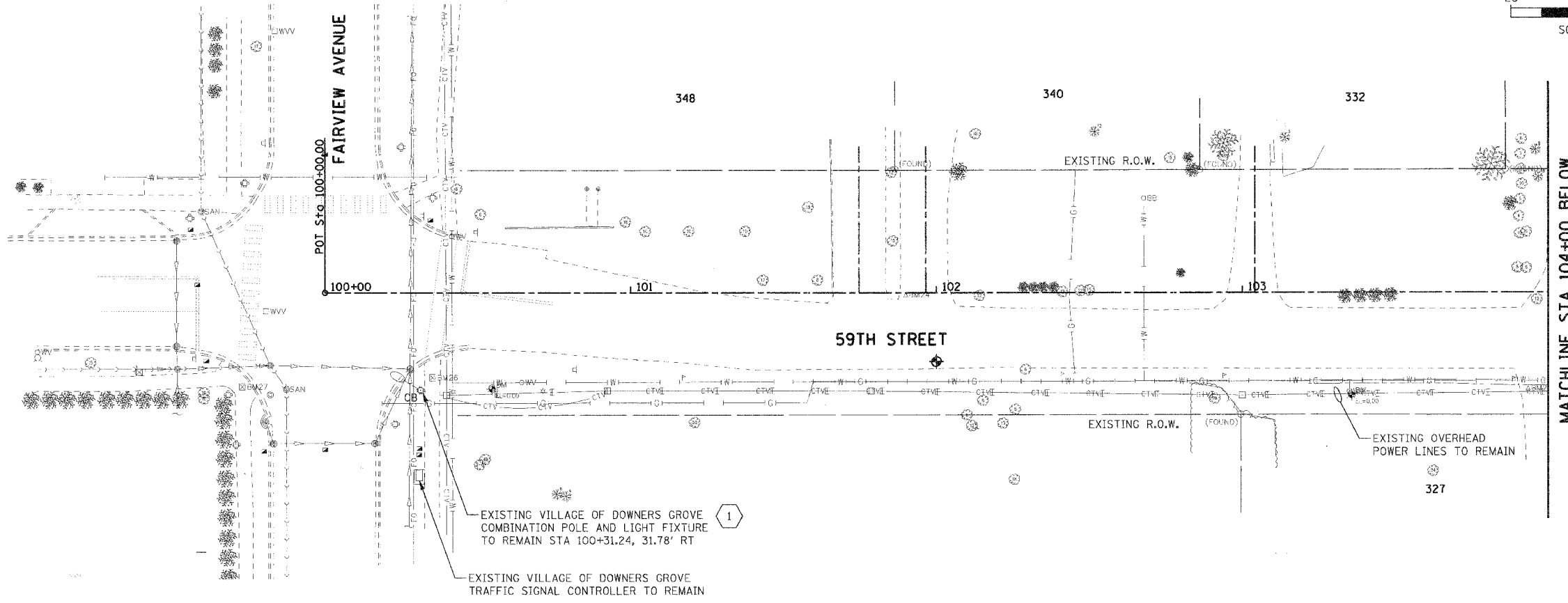
F.A.U. RTE.	SECTION	COUNTY	TOTAL SHEETS	SHEET NO.
1512	05-00093-00-WR	DUPAGE	72	43
STA. 100+00		TO STA. 109+00		
FED. ROAD DIST. NO. 1 ILLINOIS FED. AID PROJECT				
PROJECT NO.: M-8003 (699)				



PLAN	SURVEYED	DATE
	PLOTTED	
	CHECKED	
	BY	
	NO. OF PAGES CHECKED	
	DATE FILE NAME	

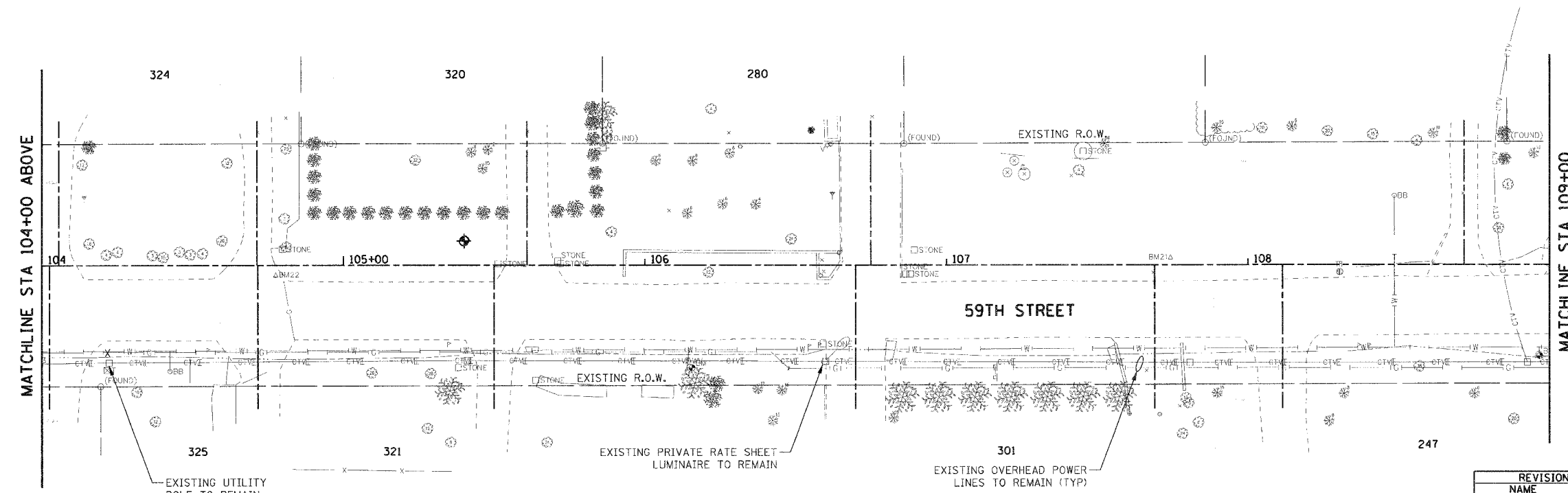
PROFILE	SURVEYED	DATE
	PLOTTED	
	CHECKED	
	BY	
	NO. OF PAGES CHECKED	
	DATE FILE NAME	

PLOT DATE = #DATE#
 FILE NAME = #FILE#
 PLOT SCALE = #SCALE#
 USER NAME = #USER#



- GENERAL NOTES**
- REFER TO DRAWING E-01 FOR GENERAL NOTES, LEGEND AND ABBREVIATIONS.
 - EXISTING LIGHT POLE AND ASSOCIATED CIRCUIT, CABLE, FOUNDATION, FIXTURE, ETC. TO REMAIN.
 - LOCATION OF EXISTING LIGHT POLES ARE APPROXIMATE. FIELD VERIFY EXACT LOCATION.

- KEY NOTES**
- 1 EXISTING COMBINATION POLE AND LIGHT FIXTURE TO REMAIN.



REVISIONS	
NAME	DATE

E-02 2 OF 12

ILLINOIS DEPARTMENT OF TRANSPORTATION

VILLAGE OF WESTMONT
 59TH STREET RECONSTRUCTION

LIGHTING DEMOLITION PLAN
 SHEET 1 OF 3

SCALE: 1"=20'
 DATE: 09/21/07

DRAWN BY: FO
 CHECKED BY: DEM