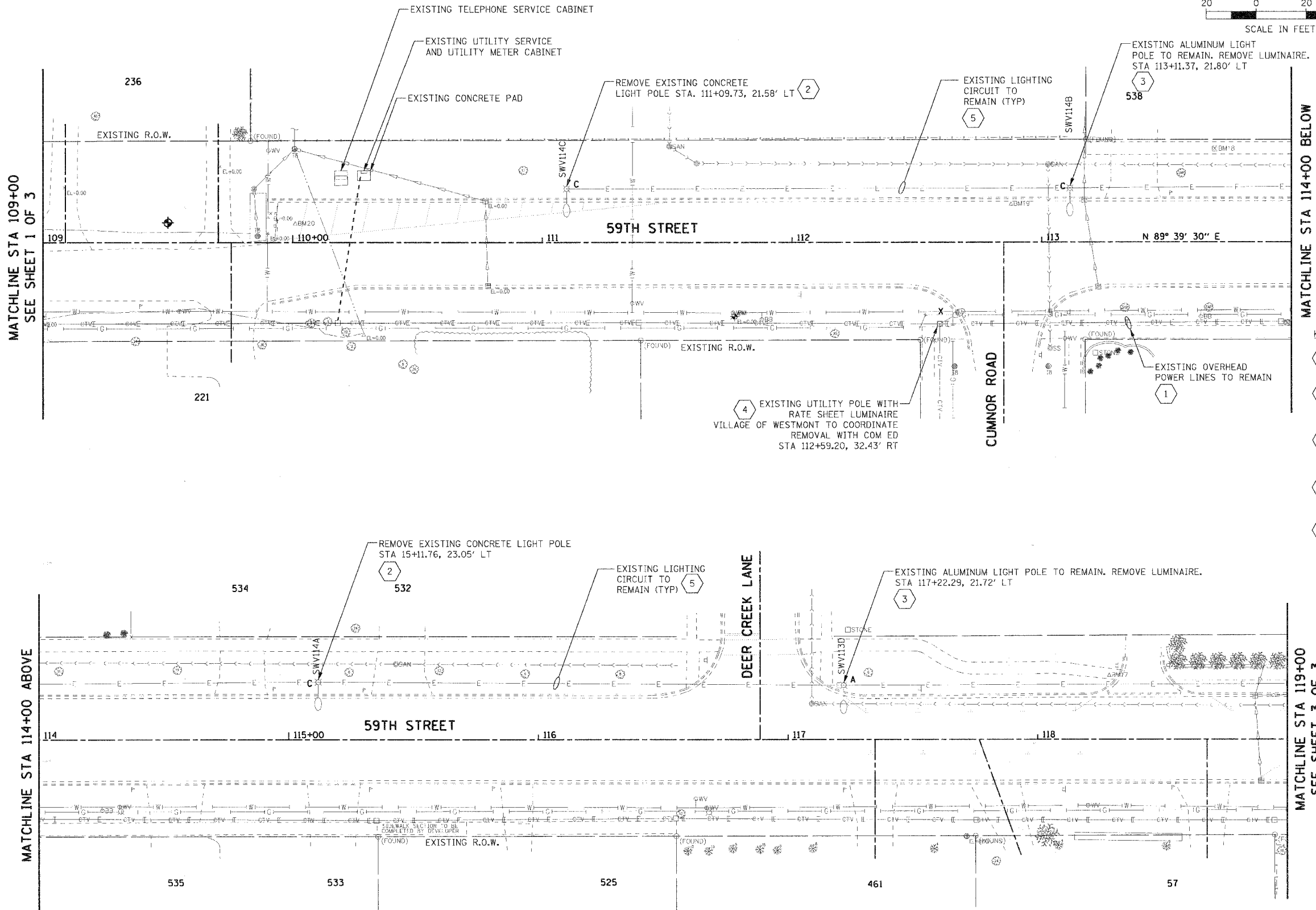
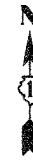
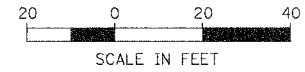


| F.A.U. RTE. | SECTION | COUNTY | TOTAL SHEETS | SHEET NO. |
|---|----------------|----------------|--------------|-----------|
| 1512 | 05-00093-00-WR | DUPAGE | 72 | 44 |
| STA. 109+00 | | TO STA. 119+00 | | |
| FED. ROAD DIST. NO. 1 ILLINOIS FED. AID PROJECT | | | | |
| PROJECT NO.: M-8003 (699) | | | | |



- GENERAL NOTES**
- REFER TO DRAWING E-01 FOR GENERAL NOTES, LEGEND AND ABBREVIATIONS.
 - EXISTING LIGHT POLE AND ASSOCIATED CIRCUIT, CABLE, FOUNDATION, FIXTURE, ETC. TO REMAIN.
 - LOCATION OF EXISTING LIGHT POLES ARE APPROXIMATE. FIELD VERIFY EXACT LOCATION.

- KEY NOTES**
- EXISTING OVERHEAD POWER LINES TO REMAIN.
 - EXISTING 35 FOOT HIGH CONCRETE LIGHT POLE WITH 8 FOOT MAST ARM AND 150W HPS LIGHT FIXTURE TO BE REMOVED.
 - EXISTING 35 FOOT HIGH ALUMINUM LIGHT POLE WITH 8 FOOT MAST ARM. REMOVE AND SALVAGE EXISTING HPS LIGHT FIXTURE.
 - EXISTING POWER POLE AND RATE SHEET LIGHT FIXTURE.
 - EXISTING LIGHTING CIRCUIT TO REMAIN. FIELD VERIFY EXISTING WIRE SIZE FOR AS-BUILT DRAWINGS.

PLAN

| NO. | DATE | BY |
|-----|------|----|
| | | |

REVISIONS

| NO. | DATE | BY | DESCRIPTION |
|-----|------|----|-------------|
| | | | |

PROFILE

| NO. | DATE | BY |
|-----|------|----|
| | | |

REVISIONS

| NO. | DATE | BY | DESCRIPTION |
|-----|------|----|-------------|
| | | | |

PLT DATE = #DATE#
 FILE NAME = #FILE#
 PLOT SCALE = #SCALE#
 USER NAME = #USER#

| REVISIONS | | ILLINOIS DEPARTMENT OF TRANSPORTATION | |
|-----------|------|---------------------------------------|-----------------|
| NAME | DATE | | |
| | | VILLAGE OF WESTMONT | |
| | | 59TH STREET RECONSTRUCTION | |
| | | LIGHTING DEMOLITION PLAN | |
| | | SHEET 2 OF 3 | |
| | | SCALE: 1"=20' | DRAWN BY: FO |
| | | DATE: 09/21/07 | CHECKED BY: DEM |