

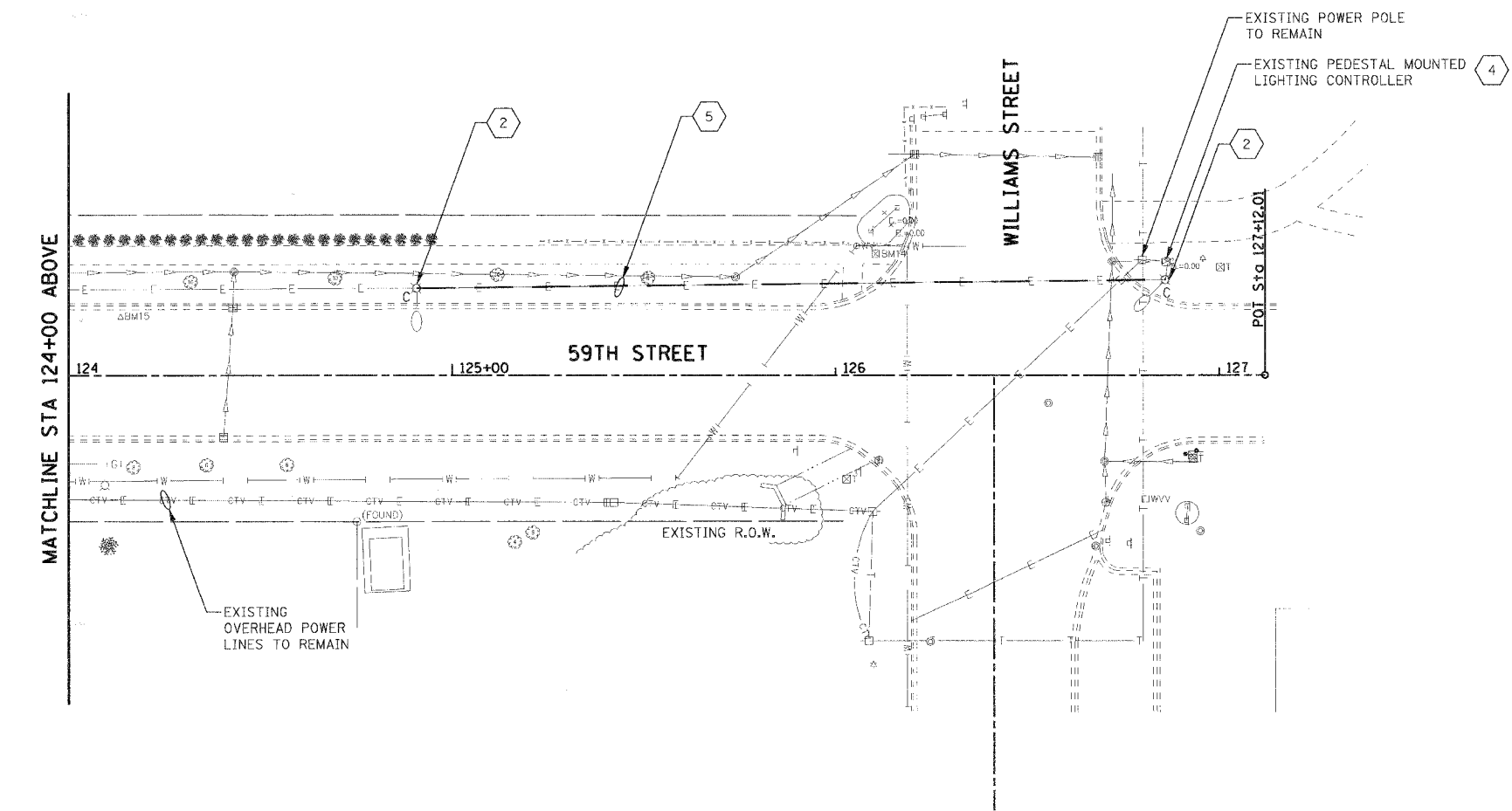
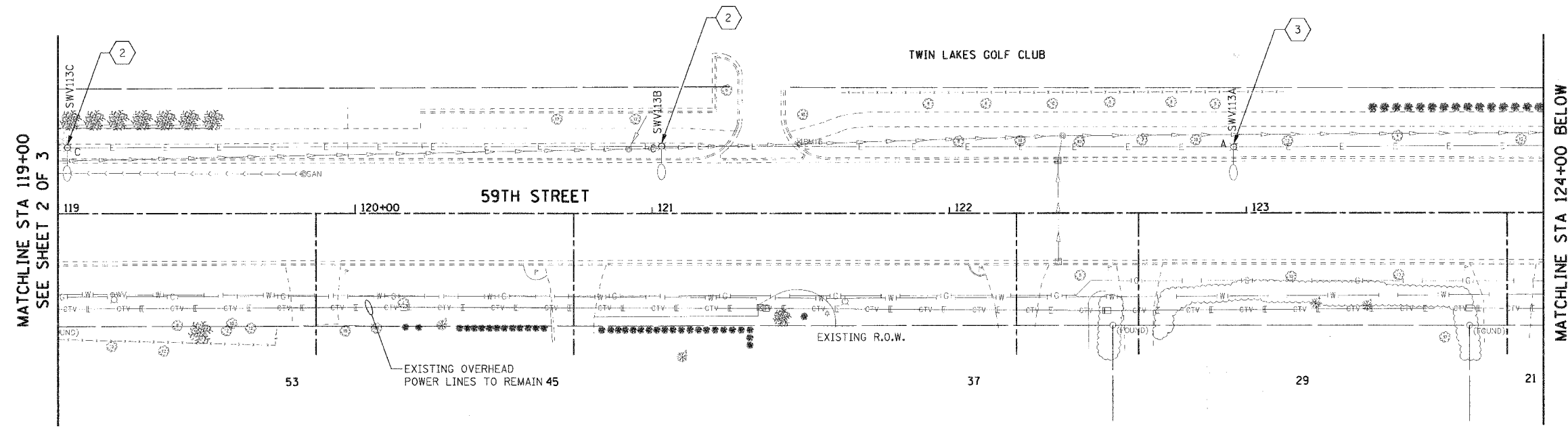
F.A.U. RTE.	SECTION	COUNTY	TOTAL SHEETS	SHEET NO.
1512	05-00093-00-WR	DUPAGE	72	45
STA. 119+00		TO STA. 127+00		
FED. ROAD DIST. NO. 1 ILLINOIS FED. AID PROJECT				
PROJECT NO.: M-8003 (699)				

GENERAL NOTES

- REFER TO DRAWING E-01 FOR GENERAL NOTES, LEGEND AND ABBREVIATIONS.
- EXISTING LIGHT POLE AND ASSOCIATED CIRCUIT, CABLE, FOUNDATION, FIXTURE, ETC. TO REMAIN.
- LOCATION OF EXISTING LIGHT POLES ARE APPROXIMATE. FIELD VERIFY EXACT LOCATION.

KEY NOTES:

- EXISTING OVERHEAD POWER LINES TO REMAIN.
- EXISTING 35 FOOT HIGH CONCRETE LIGHT POLE WITH ASSOCIATED 8 FOOT MAST ARM AND 150W HPS LIGHT FIXTURE TO BE REMOVED.
- EXISTING 35 FOOT HIGH ALUMINUM LIGHT POLE WITH 8 FOOT MAST ARM. REMOVE AND SALVAGE EXISTING HPS LIGHT FIXTURE.
- EXISTING PEDESTAL MOUNTED LIGHTING CONTROLLER TO REMAIN.
- DISCONNECT EXISTING CIRCUIT AS INDICATED IN THE DRAWING. DO NOT DISCONNECT EXISTING CIRCUIT PRIOR TO ACCEPTANCE OF NEW CONSTRUCTION BY THE VILLAGE OF WESTMONT. REMOVE EXISTING CONDUCTORS AND INSTALL PULL ROPE. CLOSE CONDUIT ENDS WITH DUCT SEAL COMPOUND.



PLAN
DATE
BY
REVISIONS
NOTED
NO. _____

PROFILE
DATE
BY
REVISIONS
NOTED
NO. _____

PLOT DATE = #DATE#
 FILE NAME = #FILE#
 PLOT SCALE = #SCALE#
 USER NAME = #USER#

REVISIONS		ILLINOIS DEPARTMENT OF TRANSPORTATION
NAME	DATE	
		VILLAGE OF WESTMONT 59TH STREET RECONSTRUCTION LIGHTING DEMOLITION PLAN SHEET 3 OF 3 SCALE: 1"=20' DATE: 09/21/07 DRAWN BY: FO CHECKED BY: DEM