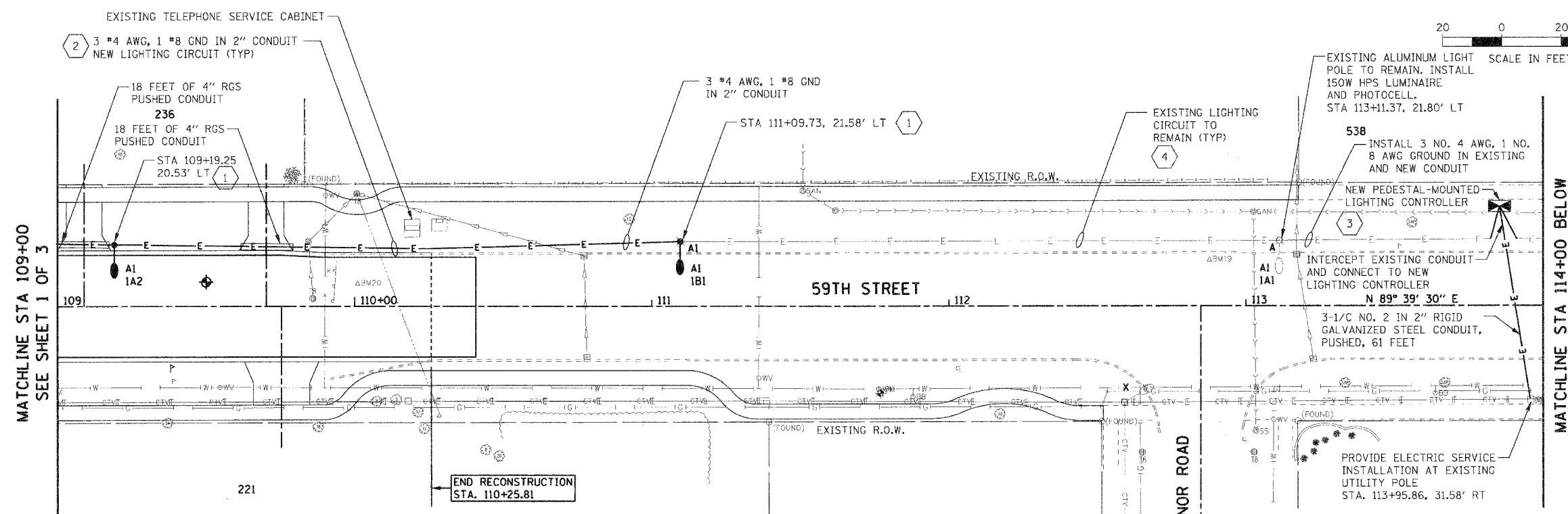


F.A.U. RTE.	SECTION	COUNTY	TOTAL SHEETS	SHEET NO.
1512	05-00093-00-WR	DUPAGE	72	47
STA. 109+00		TO STA. 119+00		
FED. ROAD DIST. NO. 1 ILLINOIS FED. AID PROJECT				
PROJECT NO.: M-8003 (699)				

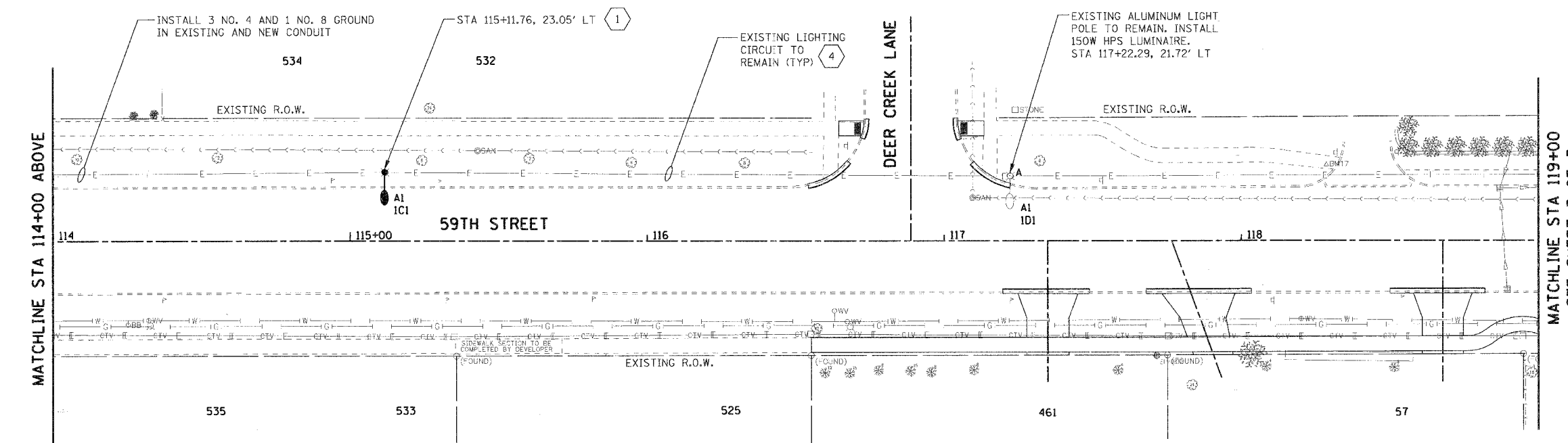


MATCHLINE STA 109+00  
SEE SHEET 1 OF 3

MATCHLINE STA 114+00 BELOW  
SEE SHEET 3 OF 3

- GENERAL NOTES:
- REFER TO DRAWING E-01 FOR GENERAL NOTES, LEGEND AND ABBREVIATIONS.
  - LOCATION OF EXISTING LIGHT POLES ARE APPROXIMATE. FIELD VERIFY EXACT LOCATION.
  - COORDINATE EXACT LOCATION OF NEW LIGHT POLES WITH CIVIL WORK AND VILLAGE OF WESTMONT.

- KEY NOTES:
- PROVIDE NEW LIGHT POLE AND LIGHT FIXTURE IN ACCORDANCE WITH DETAILS ON SHEET E-08.
  - PROVIDE NEW LIGHT CIRCUIT AND ASSOCIATED CONDUIT AND WIRES PER VILLAGE OF WESTMONT STANDARDS.
  - PROVIDE NEW LIGHTING CONTROLLER AND INSTALL ON TYPE A CONCRETE FOUNDATION. COORDINATE EXACT REQUIREMENTS WITH THE VILLAGE.
  - EXISTING LIGHTING CIRCUIT TO REMAIN.



MATCHLINE STA 114+00 ABOVE  
SEE SHEET 2 OF 3

MATCHLINE STA 119+00  
SEE SHEET 3 OF 3

REVISIONS		ILLINOIS DEPARTMENT OF TRANSPORTATION
NAME	DATE	
		VILLAGE OF WESTMONT 59TH STREET RECONSTRUCTION PROPOSED LIGHTING PLAN SHEET 2 OF 3 SCALE: 1"=20' DATE: 09/21/07 DRAWN BY: FO CHECKED BY: DEM

PLAN	DATE
BY	
NO.	
DATE	
BY	
NO.	
DATE	
BY	
NO.	

PROFILE	DATE
BY	
NO.	
DATE	
BY	
NO.	
DATE	
BY	
NO.	

PLOT DATE = \*DATE\*  
 FILE NAME = \*SCALE\*  
 PLOT SCALE = \*SCALE\*  
 USER NAME = \*USER\*