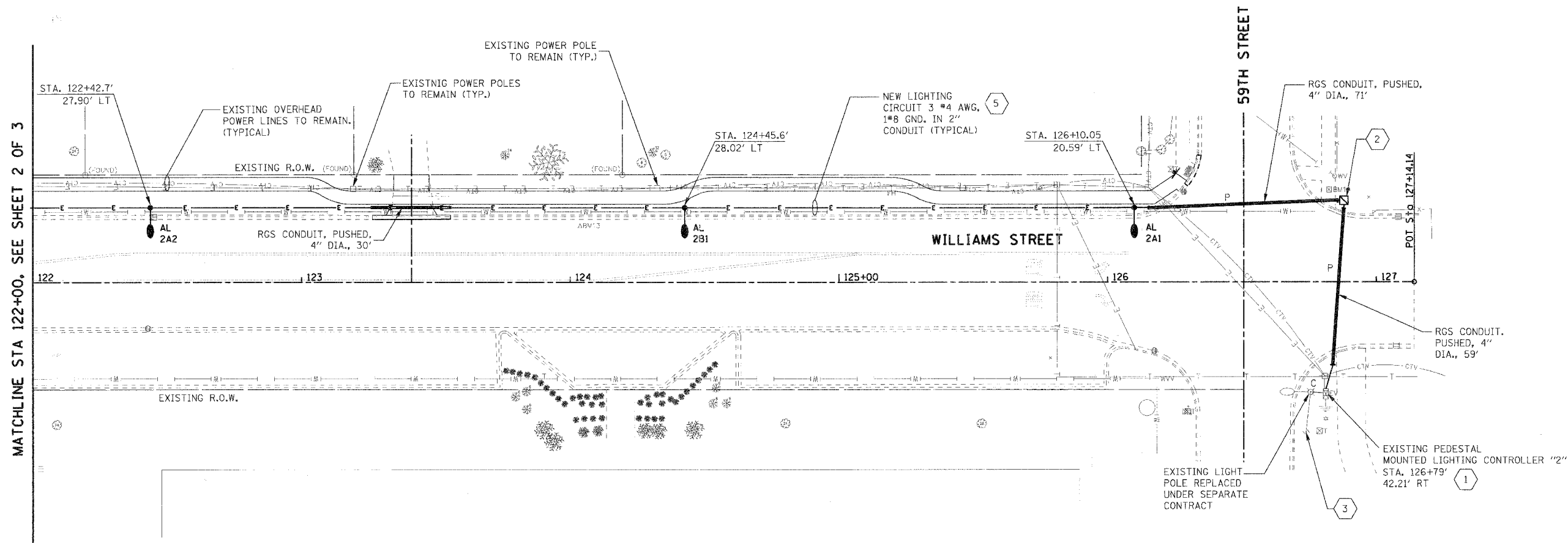
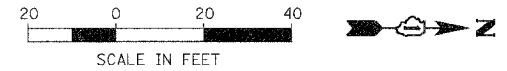


F.A.U. RTE.	SECTION	COUNTY	TOTAL SHEETS	SHEET NO.
2993	05-00094-00-WR	DUPAGE	67	47
STA. 122+00.00		TO STA. 127+14.14		
FED. ROAD DIST. NO. 1 ILLINOIS FED. AID PROJECT				
PROJECT NO.: M-8003 (707)				



PLAN	SURVEYED	DATE
	BY	
	NOTED	
	BY	
	DATE	

PROFILE	SURVEYED	DATE
	BY	
	NOTED	
	BY	
	DATE	

PLOT DATE = #DATE#
 FILE NAME = #FILE#
 PLOT SCALE = #SCALE#
 USER NAME = #USER#

GENERAL NOTES

- REFER TO DRAWING E-01 FOR GENERAL NOTES, LEGEND AND ABBREVIATIONS.
- EXISTING LIGHT POLE AND ASSOCIATED CIRCUIT, CABLE, FOUNDATION, FIXTURE, ETC. TO REMAIN.
- LOCATION OF EXISTING LIGHT POLES ARE APPROXIMATE. FIELD VERIFY EXACT LOCATION.

KEY NOTES

- EXISTING PEDESTAL MOUNTED LIGHTING CONTROLLER TO REMAIN. CONNECT NEW CIRCUIT TO EXISTING AVAILABLE CIRCUIT IN EXISTING LIGHTING CONTROLLER. MODIFY EXISTING LIGHTING CONTROLLER BY REPLACING ONE 100 AMP, 2-POLE CIRCUIT BREAKER AND REPLACING TWO 40 AMP, 2-POLE CIRCUIT BREAKERS WITH FOUR 40 AMP, 1-POLE CIRCUIT BREAKERS.
- PROVIDE NEW HANDHOLE
- EXISTING LIGHTING CIRCUIT TO REMAIN
- PROVIDE NEW LIGHT POLE AND LIGHT FIXTURE IN ACCORDANCE WITH DETAILS ON SHEET E-08
- PROVIDE NEW LIGHT CIRCUIT AND ASSOCIATED CONDUIT AND WIRES PER VILLAGE OF WESTMONT STANDARDS

E-07 7 OF 12

REVISIONS		ILLINOIS DEPARTMENT OF TRANSPORTATION
NAME	DATE	
		VILLAGE OF WESTMONT WILLIAMS STREET RECONSTRUCTION PROPOSED LIGHTING PLAN SHEET 3 OF 3

SCALE: 1:20
 DATE: 09/21/07
 DRAWN BY: FO
 CHECKED BY: DEM