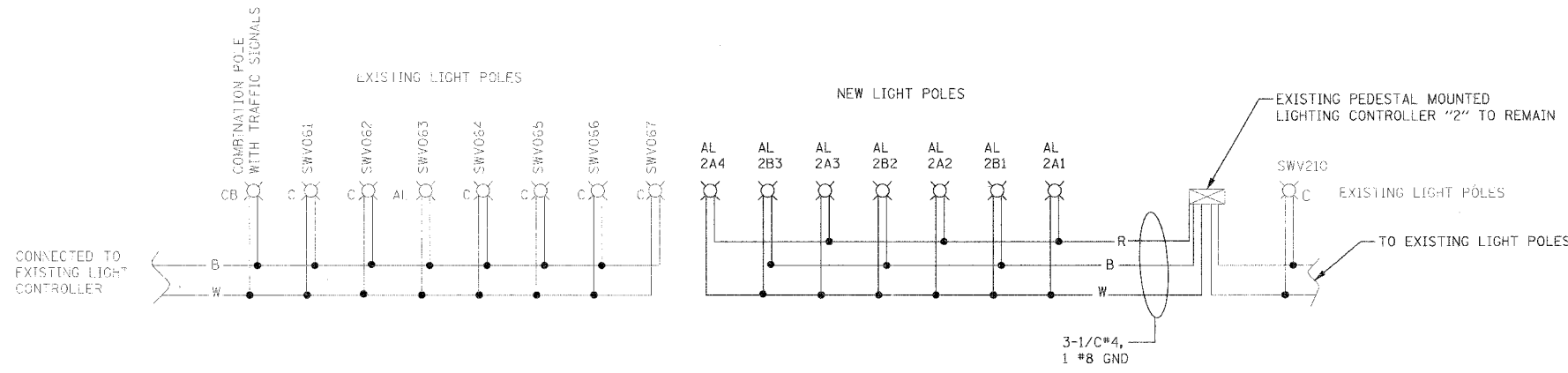


F.A.U. RTE.	SECTION	COUNTY	TOTAL SHEETS	SHEET NO.
2993	05-00094-00-WR	DUPAGE	67	50
STA.		TO STA.		
FED. ROAD DIST. NO. 1		ILLINOIS FED. AID PROJECT		
PROJECT NO.: M-8003 (707)				

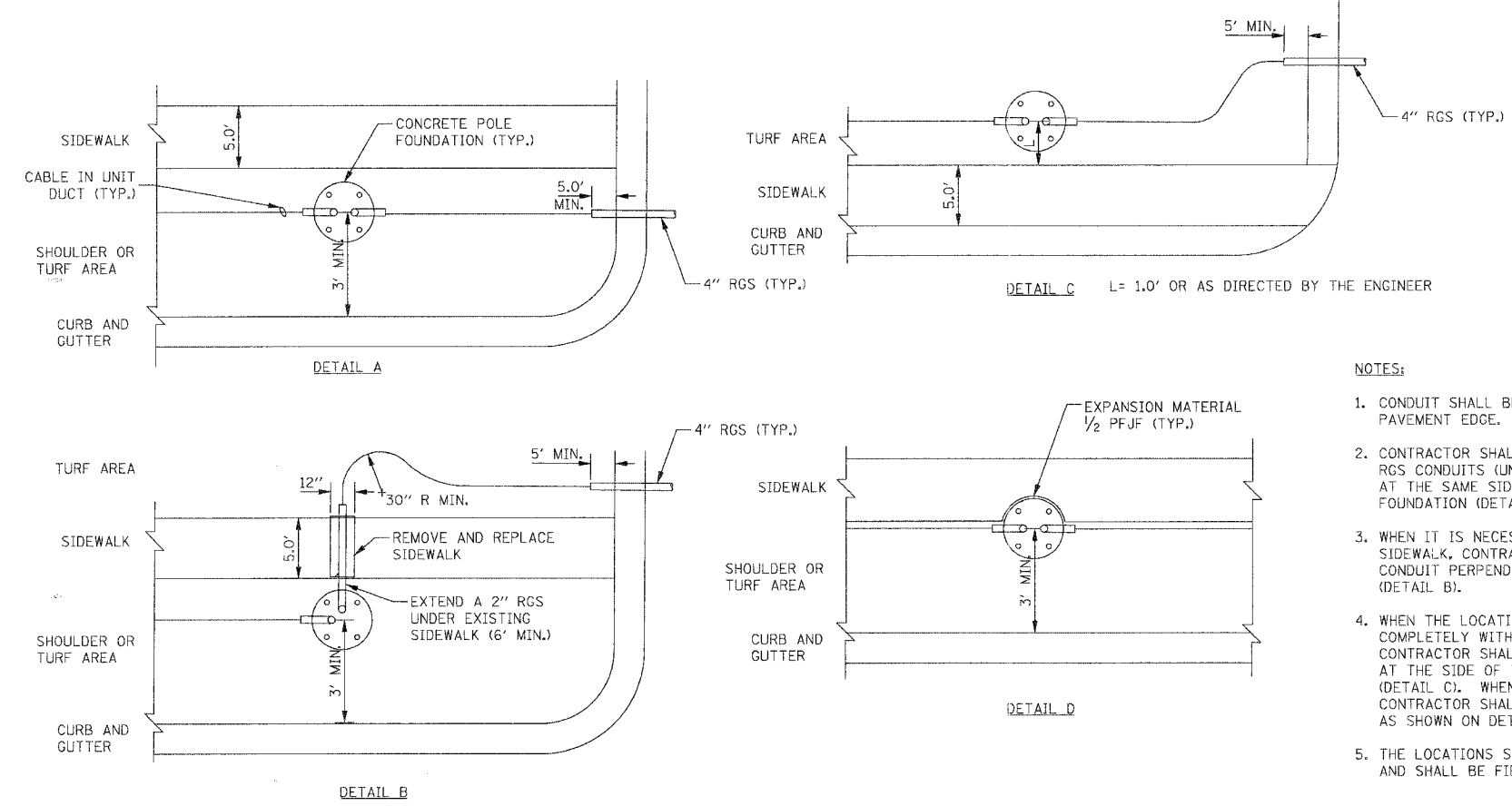
PLAN	SURVEYED	DATE
	PLOTTED	
	NOTED	
	BY	
	DATE	

PROFILE	SURVEYED	DATE
	PLOTTED	
	NOTED	
	BY	
	DATE	



**LEGEND**

- SINGLE 150W HPS LUMINAIRE - 240V, DESIGNATION AS INDICATED
- LIGHTING CONTROLLER, DUPLEX TYPE WITH RADIO CONTROL AND SCADA
- B BLACK PHASE CONDUCTOR
- W WHITE NEUTRAL CONDUCTOR
- R RED PHASE CONDUCTOR
- G GREEN GROUND CONDUCTOR



**NOTES:**

1. CONDUIT SHALL BE INSTALLED MINIMUM 2'-0" FROM PAVEMENT EDGE.
2. CONTRACTOR SHALL MAKE AN EFFORT TO INSTALL RGS CONDUITS (UNDER DRIVEWAYS OR ROADWAY) AT THE SAME SIDE OF THE SIDEWALK AS THE POLE FOUNDATION (DETAIL A).
3. WHEN IT IS NECESSARY TO CROSS THE EXISTING SIDEWALK, CONTRACTOR SHALL INSTALL A 4" RGS CONDUIT PERPENDICULAR TO THE SIDEWALK (DETAIL B).
4. WHEN THE LOCATION OF A POLE FOUNDATION FALLS COMPLETELY WITHIN THE EXISTING SIDEWALK, THE CONTRACTOR SHALL CONSTRUCT THE FOUNDATION AT THE SIDE OF THE SIDEWALK AWAY FROM THE ROAD (DETAIL C). WHEN PARTIAL OVERLAP OCCURS, THE CONTRACTOR SHALL CONSTRUCT THE POLE FOUNDATION AS SHOWN ON DETAIL D.
5. THE LOCATIONS SHOWN IN THE DETAILS ARE APPROXIMATE AND SHALL BE FIELD COORDINATED DURING CONSTRUCTION.

**TYPICAL CONDUIT INSTALLATION DETAILS NEAR INTERSECTIONS**

REVISIONS		ILLINOIS DEPARTMENT OF TRANSPORTATION
NAME	DATE	
		VILLAGE OF WESTMONT WILLIAMS STREET RECONSTRUCTION  ELECTRICAL DETAILS SHEET 3 OF 5  SCALE: NONE DATE: 09/21/07
DRAWN BY: FO		CHECKED BY: DEM

PLOT DATE = #DATE#  
 FILE NAME = #FILE#  
 PLOT SCALE = #SCALE#  
 USER NAME = #USER#