

**STATE OF ILLINOIS
DEPARTMENT OF TRANSPORTATION
PLANS FOR PROPOSED
LOCAL AGENCY IMPROVEMENT**

**FEDERAL-AID HBP PROJECT
HIGHWAY BRIDGE PROGRAM
TR 61A
SECTION 06-15118-01-BR/ OGLE COUNTY
SECTION 06-02121-01-BR/ WINNEBAGO COUNTY
PROJECT BHOS-141(64)
JOB NO. C-92-062-07
CONTRACT NO. 85416
2007**

INDEX OF SHEETS

- 1 = COVER SHEET
- 2 = GENERAL NOTES, SCHEDULES AND TYPICAL SECTION
- 3 = PLAN AND PROFILE
- 4 = EROSION CONTROL PLAN
- 5 = GENERAL PLAN AND ELEVATION
- 6 = DECK BEAM DETAILS
- 7-8 = WEST ABUTMENT DETAILS
- 9-10 = EAST ABUTMENT DETAILS
- 11-12 = PIERS 1, 2 & 3 DETAILS
- 13 = STEEL RAIL, TYPE S-1
- 14 = CROSS SECTIONS

SUMMARY OF QUANTITIES

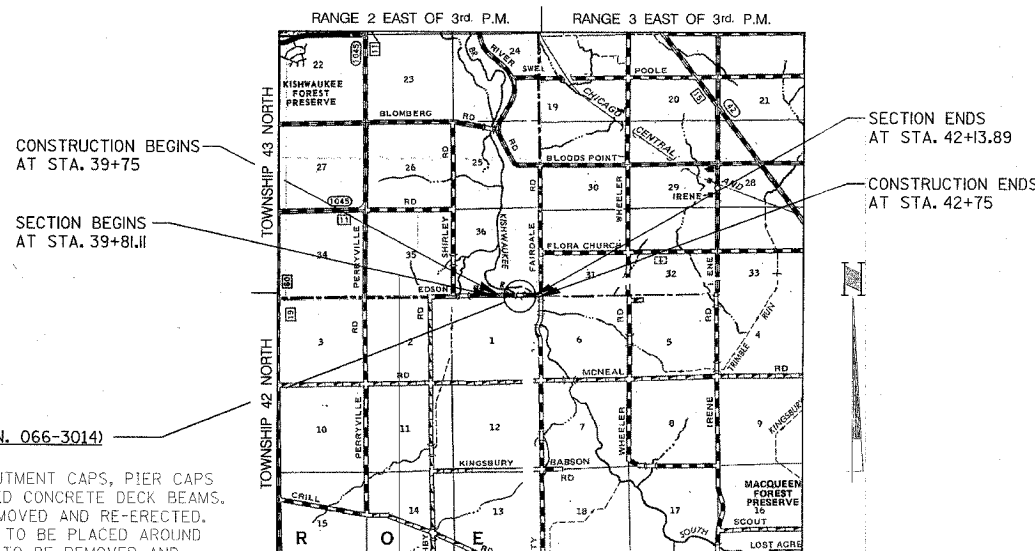
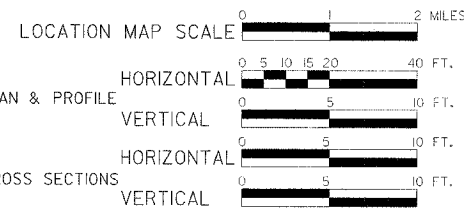
PAY CODE	QUANTITY	UNIT	ITEM
20200100*	83	Cu. Yd.	Earth Excavation
20700220*	16	Cu. Yd.	Porous Granular Embankment
25001000*	0.08	Acre	Seeding, Class 2 (Special)
25100630	373	Sq. Yd.	Erosion Control Blanket
28000400*	173	Foot	Perimeter Erosion Barrier
28100109*	156	Sq. Yd.	Stone Riprap, Class A5
31101000*	74	Ton	Sub-Base Granular Material, Type B
35100100*	50	Ton	Aggregate Base Course, Type A
40603335	136	Ton	Hot-Mix Asphalt Surface Course, Mix "D", N50
50101500	1	Each	Removal of Existing Superstructures
50102400	43.7	Cu. Yd.	Concrete Removal
50200100	62	Cu. Yd.	Structure Excavation
50300225*	50.2	Cu. Yd.	Concrete Structures
50400405	5,936	Sq. Ft.	Precast Prestressed Concrete Deck Beams (21" Depth)
50800205	6,400	Pound	Reinforcement Bars, Epoxy Coated
50900905*	425	Foot	Removing and Re-Erecting Existing Rail
51500100	1	Each	Name Plates
58100200	665	Sq. Yd.	Waterproofing Membrane System
58300100	1,272	Foot	Portland Cement Mortar Fairing Course
67100100	1	L. Sum	Mobilization
70101700*	1	L. Sum	Traffic Control & Protection
X0325305	2.75	Sq. Ft.	Structural Repair of Concrete (Depth Equal to or less than 5 inches)

* See Special Provisions

STANDARDS

- 000001-05 STANDARD SYMBOLS, ABBREVIATIONS AND PATTERNS
- 280001-04 TEMPORARY EROSION CONTROL SYSTEMS
- 515001-02 NAME PLATE FOR BRIDGES
- 701901 TRAFFIC CONTROL DEVICES
- 720011 METAL POSTS FOR SIGNS, MARKERS & DELINEATORS
- 728001 TELESCOPING STEEL SIGN SUPPORT
- 729001 APPLICATIONS OF TYPES A & B METAL POSTS (FOR SIGNS & MARKERS)
- BLR-21-7 TYPICAL APPLICATION OF TRAFFIC CONTROL DEVICES FOR CONSTRUCTION ON RURAL LOCAL HIGHWAYS
- BLR-22-5 TYPICAL APPLICATION OF TRAFFIC CONTROL DEVICES FOR CONSTRUCTION ON RURAL LOCAL HIGHWAYS (Two-lane Two-way Rural Traffic) (Road Closed To Thru Traffic)

NET LENGTH 300 FT. = 0.057 MILES



PROPOSED STRUCTURE (S.N. 066-3014)
 REHABILITATION ONLY.
 REMOVE AND REPLACE ABUTMENT CAPS, PIER CAPS AND PRECAST PRESTRESSED CONCRETE DECK BEAMS. STEEL RAILING TO BE REMOVED AND RE-ERECTED. STONE RIPRAP, CLASS A5 TO BE PLACED AROUND PIERS. STONE RIPRAP A4 TO BE REMOVED AND REPLACED AROUND ABUTMENT CAPS. SUPERSTRUCTURE TO BE PLACED ON EXISTING SOLID STEM ENCASED PILE BENT PIERS AND PILE BENT ABUTMENTS.

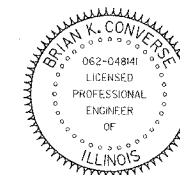
NAME AND ADDRESS OF UTILITIES	TYPE
NICOR GAS Attn: Scott Puffer 300 West Terra Cotta Crystal Lake, IL 60014 (815) 455-0271	GAS
COMED Attn: Dave Schacht 123 Energy Avenue Rockford, IL 61109 (815) 490-3261	ELECTRIC
VERIZON NORTH, INC. Attn: Garrett Burt 112 West Elm Street Sycamore, IL 60178 (815) 895-1538	TELEPHONE

APPROVED: *[Signature]* 10/12/07
 LOCAL AGENCY OFFICIAL

APPROVED: *[Signature]* 10/12/07
 LOCAL AGENCY OFFICIAL

Passed: *[Signature]* October 30, 2007
 District 2 Engineer of Local Roads & Streets

Releasing for Bid Based on Limited Review: *[Signature]* October 30, 2007
 Deputy Director of Highways, Region 2 Engineer



Brian K. Converse
 DATE: 10/11/2007
 EXPIRES 11/30/07

Plans Prepared By:
WILLET, HOFMANN & ASSOCIATES, INC.
 CONSULTING ENGINEERS
 Land Surveying - Transportation - Structural - Environmental - Architecture
 800 East Second Street, Dixon, Illinois 61021
 Phone 815.294.3381 Fax 815.294.3385
 Design Firm #194-000919 www.willett-hofmann.com

WHA # 1092D06

HIGHWAY CLASSIFICATION: LOCAL ROAD (NON-URBAN)
 DESIGN SPEED: 30 MPH
 ADT = 125
 3R GUIDELINES

