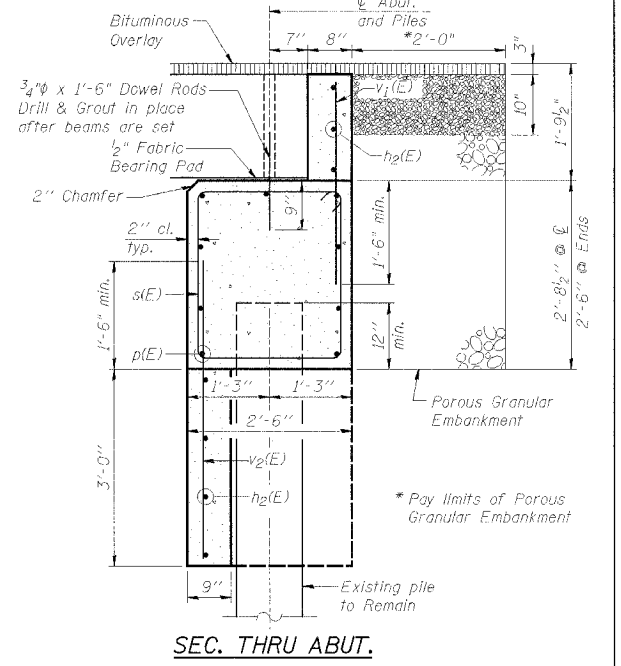
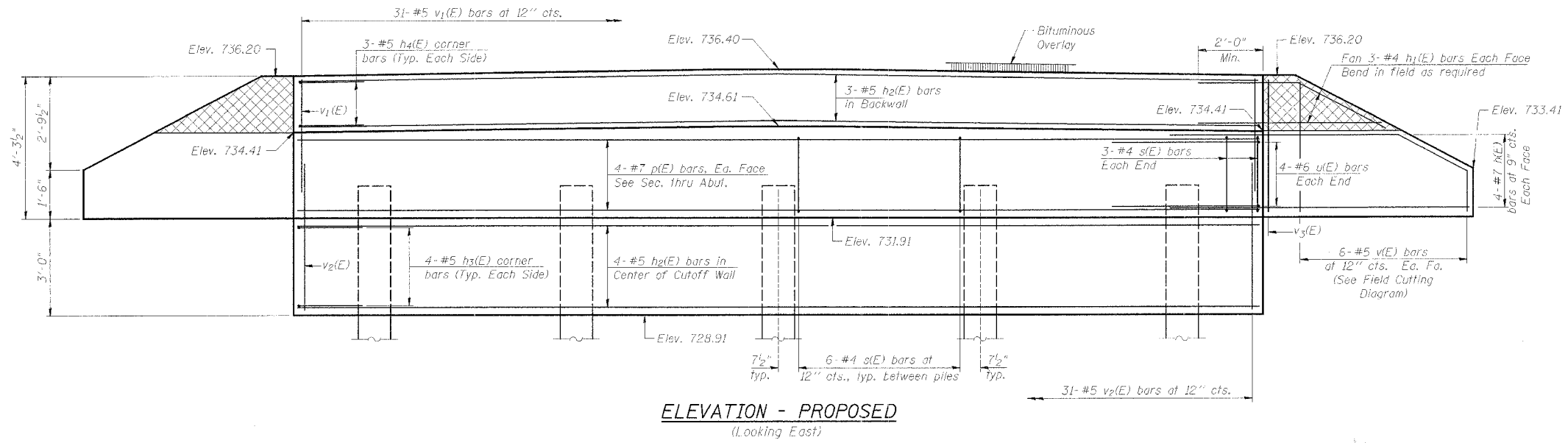
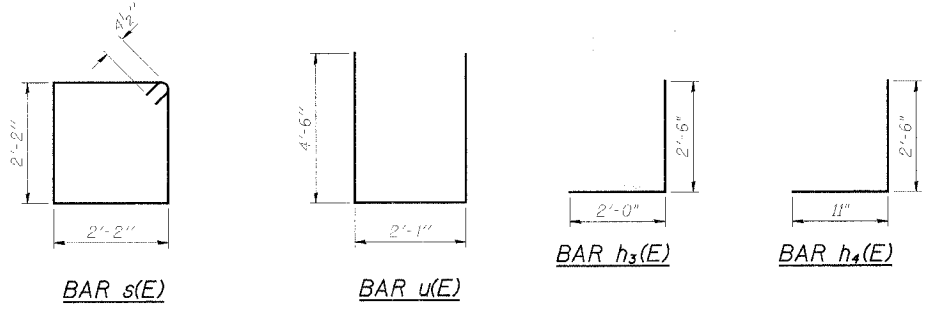
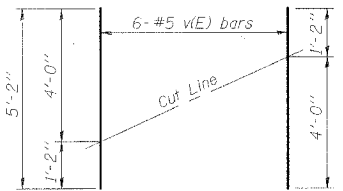
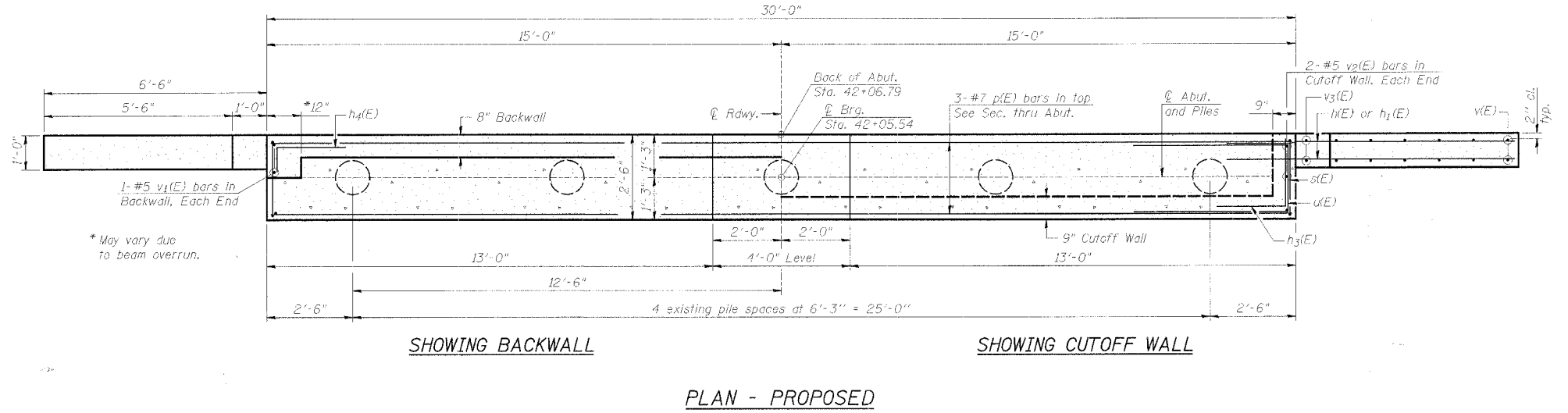


PROJECT	SECTION	COUNTY	SHEETS	TOTAL
TR 61A	06-15118-01-BR	OCLE	14	10
FED. ROAD DIST. NO. 7	BLINDS	FED. AID PROJECT	BH05-14(64)	



BILL OF MATERIAL - EAST ABUTMENT

Bar	No.	Size	Length	Shape
h ₁ (E)	16	#7	9'-9"	—
h ₂ (E)	12	#4	5'-10"	—
h ₃ (E)	7	#5	29'-8"	—
h ₄ (E)	8	#5	4'-6"	—
h ₄ (E)	6	#5	3'-5"	—
p(E)	9	#7	29'-8"	—
s(E)	30	#4	9'-5"	□
u(E)	8	#6	11'-1"	—
v(E)	24	#5	5'-2"	—
v ₁ (E)	33	#5	3'-3"	—
v ₂ (E)	35	#5	4'-6"	—
v ₃ (E)	4	#5	4'-0"	—
Porous Granular Embankment			Cu. Yd.	8
Structure Excavation			Cu. Yd.	31
Concrete Structures			Cu. Yd.	12.8
Reinforcement Bars, Epoxy Coated			Pound	1,930



Notes:
 Hatched portion of wings to be poured with the backwall after the deck beams have been installed and grout has cured for a minimum of 24 hours.
 Wing reinforcement shown is typical, unless shown otherwise.
 All exposed edges shall have standard 3/4" chamfers, except as noted.
 Space reinforcement in cap to miss dowel rods.

EAST ABUTMENT DETAILS
 EDSON ROAD (TR 61A) OVER
 SOUTH BRANCH KISHWAUKEE RIVER
 STA. 41+00 (071-3304)
 SECTION 06-15118-01-BR
 MONROE ROAD DISTRICT
 OGLE COUNTY
 SECTION 06-02121-01-BR
 CHERRY VALLEY ROAD DISTRICT
 WINNEBAGO COUNTY
 WHA # 1092D06