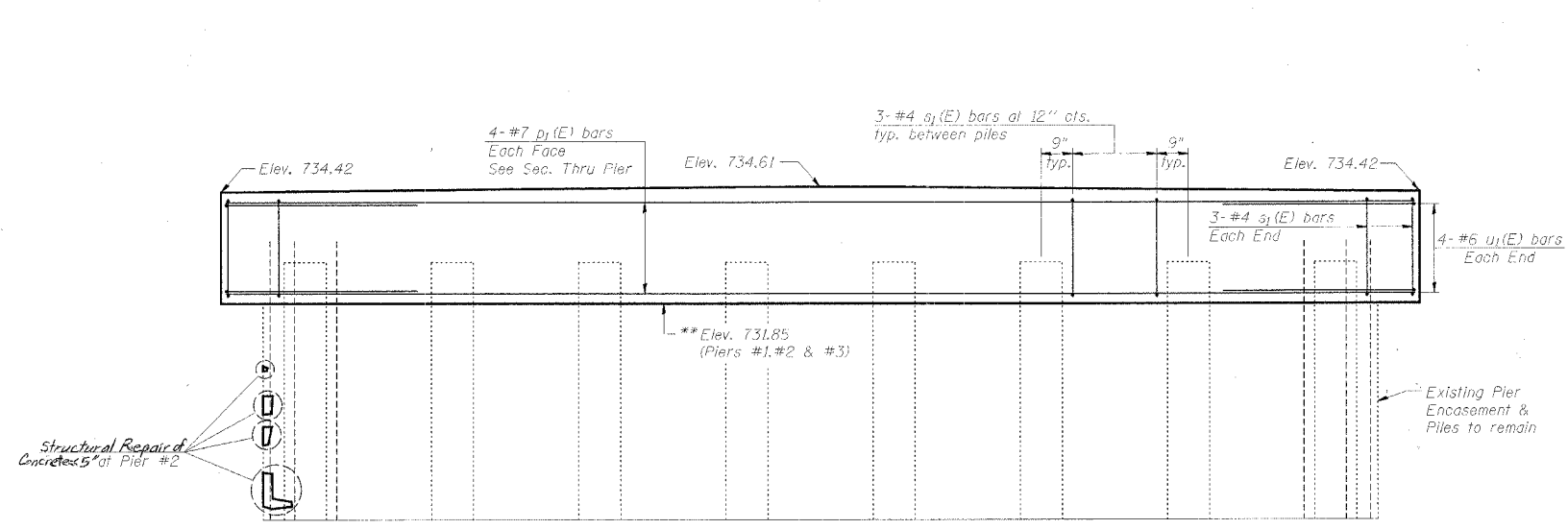
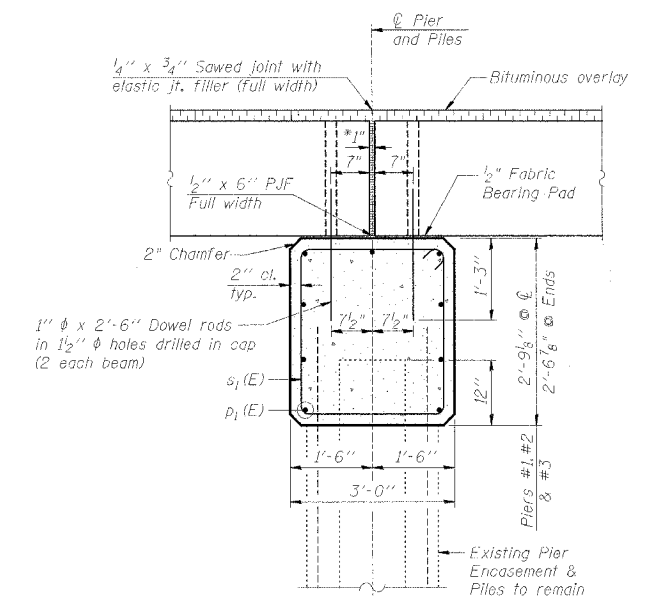


ROUTE	SECTION	COUNTY	SHEETS	SHEET
TR 61A	06-1518-01-BR	OGLE	14	12
GIA	06-02121-01-BR	WINNEBAGO		
FED. ROAD DIST. NO. 7		ILLINOIS	FED. AID PROJECT - BHOS-14(KG4)	



ELEVATION - PROPOSED
(Looking West)



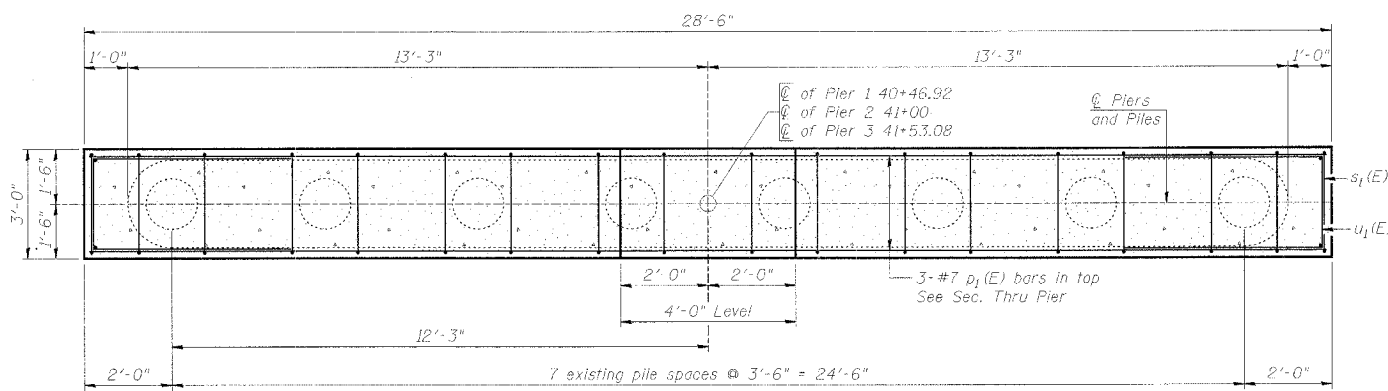
SEC. THRU PROPOSED PIER

BILL OF MATERIAL - PIERS 1, 2 & 3

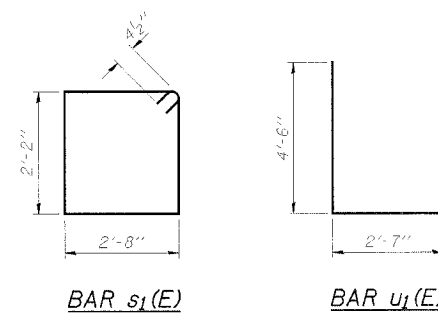
Bar	No.	Size	Length	Shape
p ₁ (E)	27	#7	28'-2"	—
s ₁ (E)	81	#4	10'-5"	□
u ₁ (E)	24	#6	11'-7"	—
Concrete Structures		Cu. Yd.	24.6	
Reinforcement Bars, Epoxy Coated		Pound	2,540	
Structural Repair of Concrete 5'		Sq. Ft.	2.75	

Notes:

- *1" jr. shall be filled with non-shrink grout. 1" dimension may vary to accommodate tolerance in beam lengths.
- After beams have been erected, holes shall be drilled into substructure and anchor dowels placed. Dowel holes shall be filled with non-shrink grout to top of beam and allowed to cure min. 24 hrs. prior to grouting the shear keys.
- All horizontal dimensions are at right angles to beam ends.
- See sheet 6 of 16 for bearing pad details.
- All exposed edges shall have standard 3/4" chamfers, except as noted.
- Space reinforcement in cap to miss dowel rods.
- **Bottom of cap shall be at top of encasement, verify in field.



PLAN - PROPOSED



PIERS 1, 2 & 3 DETAILS
EDSON ROAD (TR 61A) OVER
SOUTH BRANCH KISHWAUKEE RIVER
STA. 41+00 (071-3304)
SECTION 06-1518-01-BR
MONROE ROAD DISTRICT
OGLE COUNTY
SECTION 06-02121-01-BR
CHERRY VALLEY ROAD DISTRICT
WINNEBAGO COUNTY