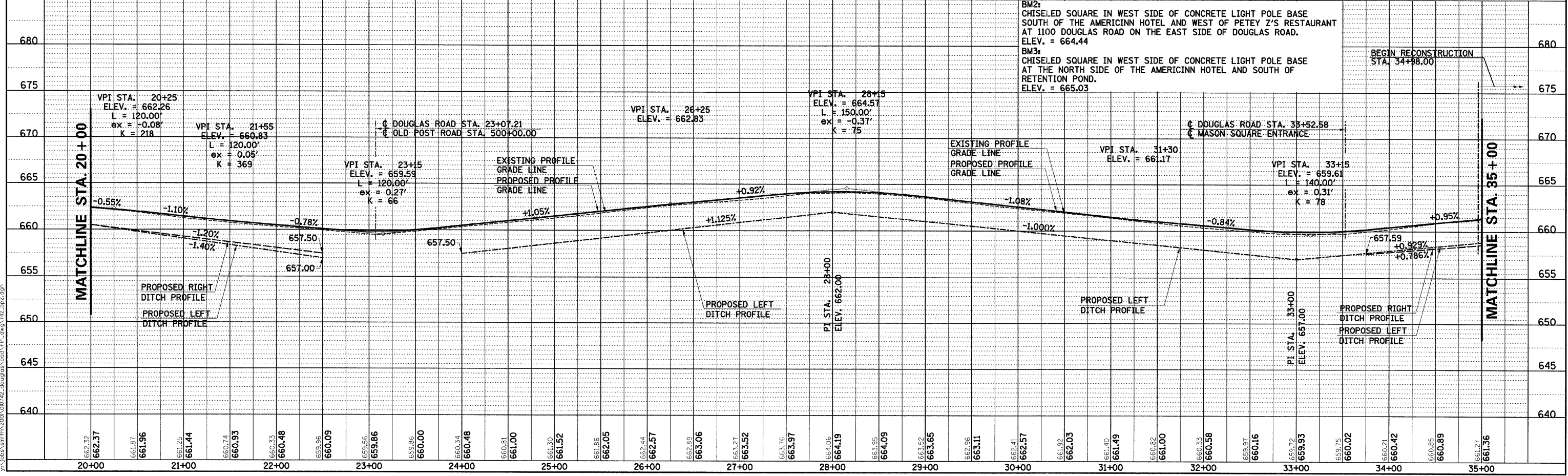
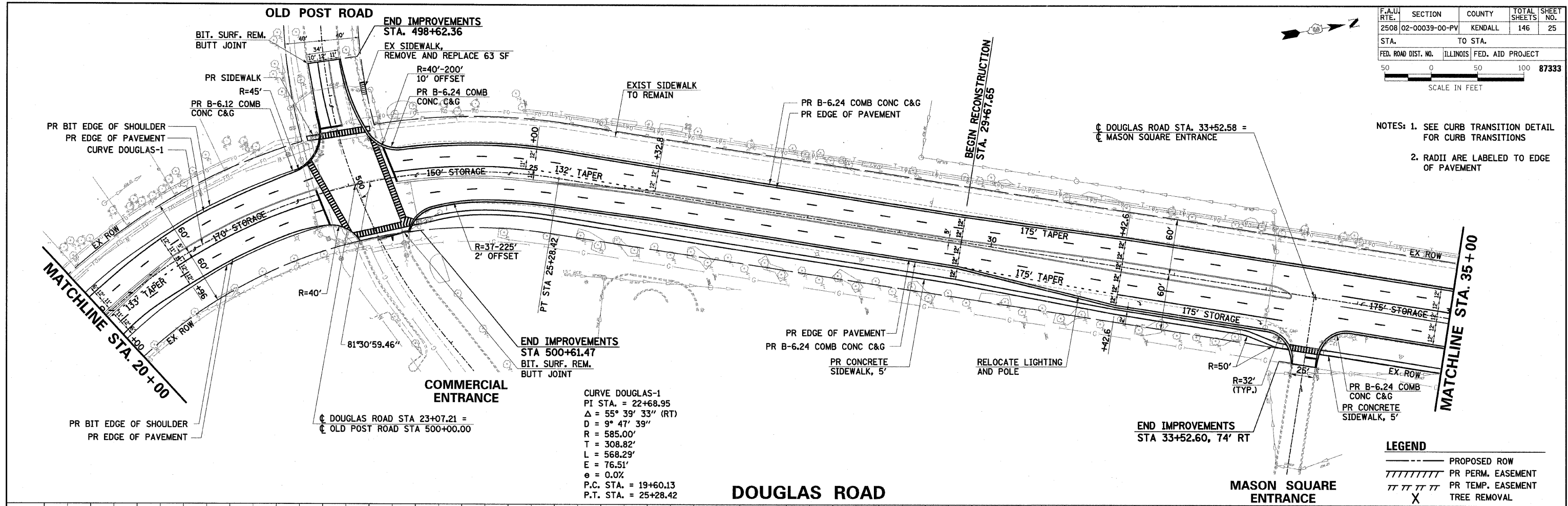


PLAN	DATE
BY	
REVISIONS	
NO.	
DESCRIPTION	
DATE	
BY	

PROFILE	DATE
BY	
REVISIONS	
NO.	
DESCRIPTION	
DATE	
BY	

F.A.U. RTE.	SECTION	COUNTY	TOTAL SHEETS	SHEET NO.
2508	02-00039-00-PV	KENDALL	146	25
STA.	TO STA.			
FED. ROAD DIST. NO.	ILLINOIS	FED. AID PROJECT		
50	0	50	100	87333
SCALE IN FEET				

NOTES: 1. SEE CURB TRANSITION DETAIL FOR CURB TRANSITIONS  
 2. RADII ARE LABELED TO EDGE OF PAVEMENT



DOUGLAS ROAD STA. 20+00 TO STA. 35+00 - PLAN AND PROFILE

246294.M  
 1/25/2008 10:07:42 douglas\ccca\lin\_dwg\312.dwg