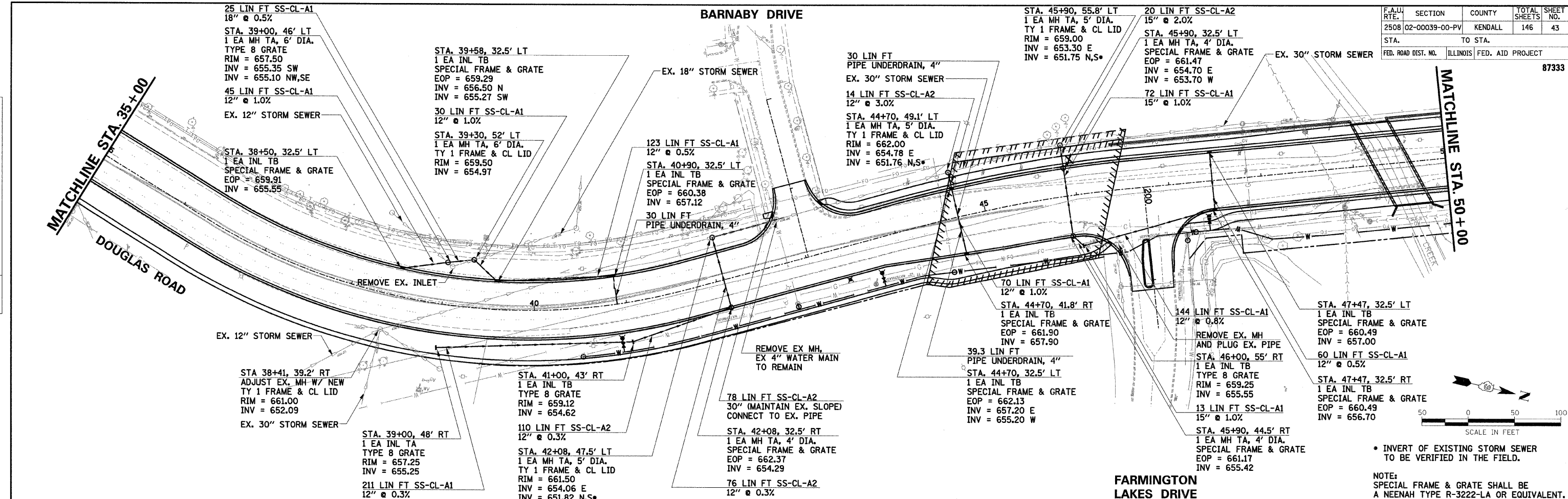
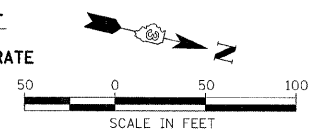


DATE	
BY	
REVIEWED	
PLANNED	
NOTED	
NO.	

DATE	
BY	
REVIEWED	
PLANNED	
NOTED	
NO.	

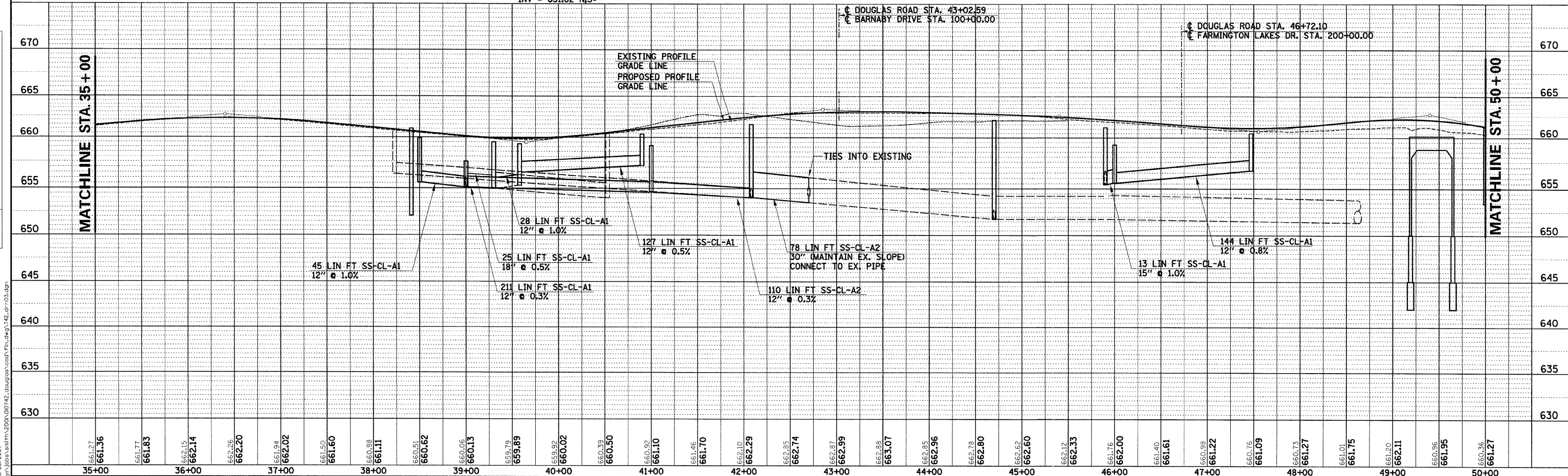


F.A.U. NO.	SECTION	COUNTY	TOTAL SHEETS	SHEET NO.
2508	02-00039-00-PV	KENDALL	146	43
STA.	TO STA.		FED. ROAD DIST. NO.	
			ILLINOIS	FED. AID PROJECT
				87333



• INVERT OF EXISTING STORM SEWER TO BE VERIFIED IN THE FIELD.

NOTE:
SPECIAL FRAME & GRATE SHALL BE A NEENAH TYPE R-3222-LA OR EQUIVALENT.



242208 AM
3/28/2007
y:\pos\mh\2008\000742_douglas\cd\fin.dwg 142.drn\03.dgn

DOUGLAS ROAD STA. 35+00 TO STA. 50+00 - DRAINAGE PLAN AND PROFILE