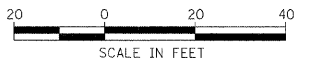
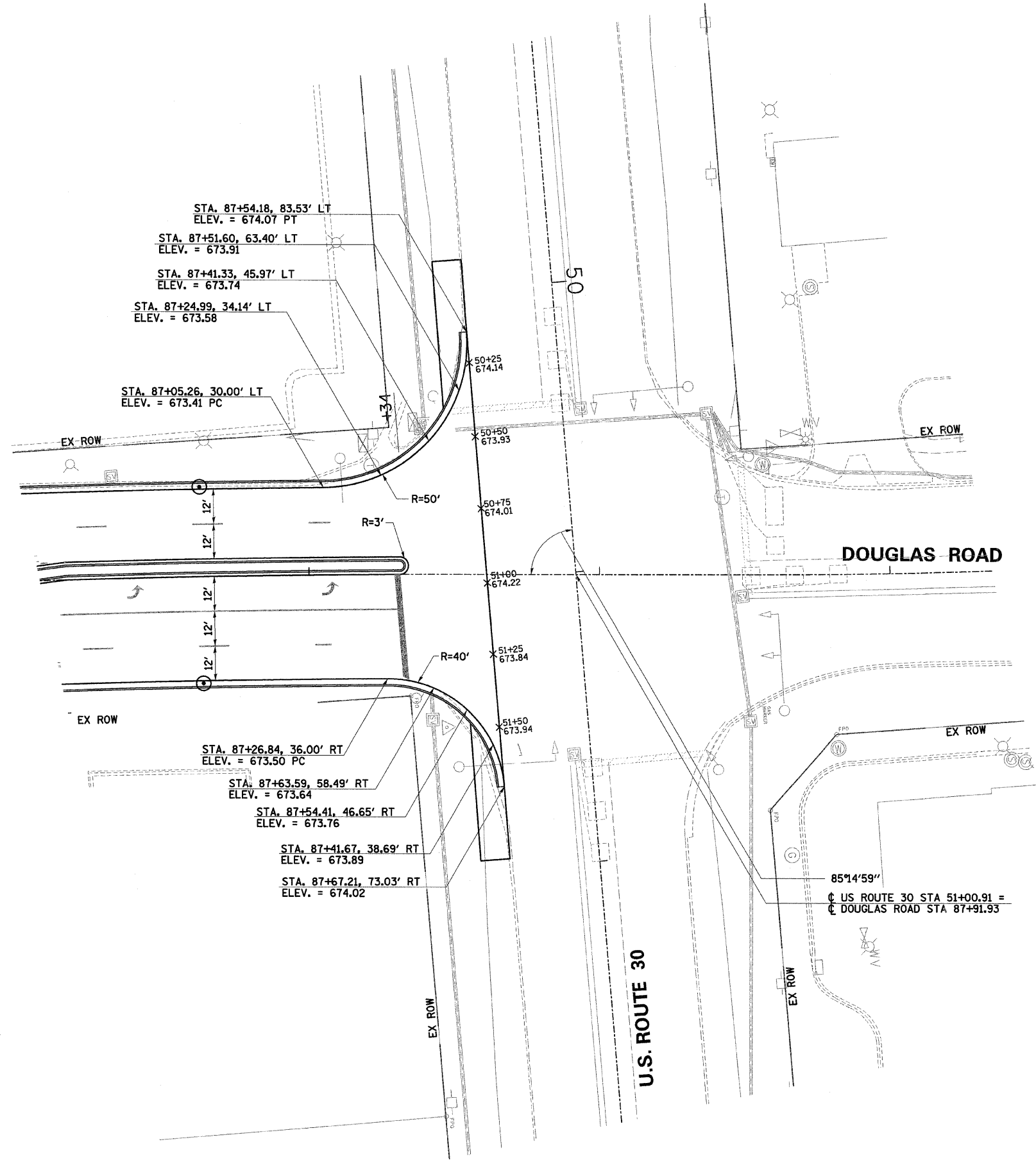


F.A.U. RTE.	SECTION	COUNTY	TOTAL SHEETS	SHEET NO.
2508	02-00039-00-PV	KENDALL	146	67
STA.		TO STA.		
FED. ROAD DIST. NO.	ILLINOIS	FED. AID PROJECT		87333



PLAN	DATE
SURVEYED	
PLOTTED	
CHECKED	
BY	
NO.	

PROFILE	DATE
SURVEYED	
PLOTTED	
CHECKED	
BY	
NO.	



ILLINOIS DEPARTMENT OF TRANSPORTATION
F.A.U. 2508 – DOUGLAS ROAD
(U.S. RTE 34 TO U.S. RTE 30)

INTERSECTION PAVEMENT ELEVATION PLAN

SCALE: VERT. _____
 HORIZ. _____
 DATE _____

DRAWN BY BAH
 CHECKED BY CRF

2/25/2007 3:28:20 PM
 Y:\cbs\smh\112003\010742.douglas\card\fn_dwg\142_1.mxd