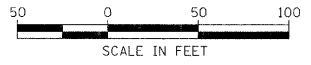


F.A.U. RTE.	SECTION	COUNTY	TOTAL SHEETS	SHEET NO.
2508	02-00039-00-PV	KENDALL	146	68
STA.		TO STA.		
FED. ROAD DIST. NO.		ILLINOIS FED. AID PROJECT		

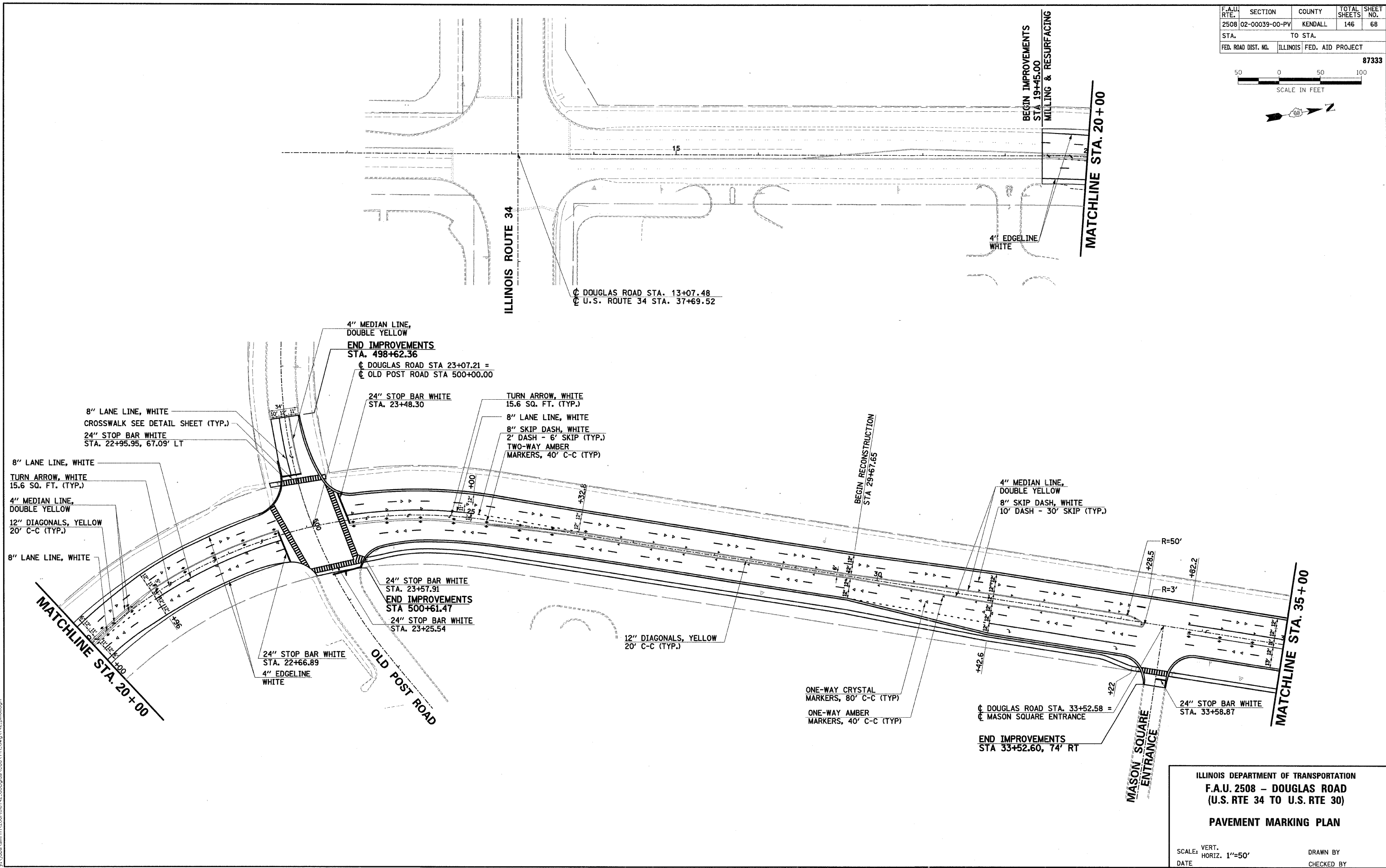
87333



PLAN	SURVEYED	DATE
	PLOTTED	
	CHECKED	
	BY	
	NO. OF WAY CHECKED	
	NO.	
	FILE NAME	

PROFILE	SURVEYED	DATE
	PLOTTED	
	CHECKED	
	BY	
	NO. OF WAY CHECKED	
	NO.	
	FILE NAME	

2/25/2007 4:00 AM  
 3/28/2007  
 V:\Jobs\smh\2006\080742.douglas\cccd\Fn\_dwg\142.pml.dgn



ILLINOIS DEPARTMENT OF TRANSPORTATION  
**F.A.U. 2508 - DOUGLAS ROAD**  
**(U.S. RTE 34 TO U.S. RTE 30)**

**PAVEMENT MARKING PLAN**

SCALE: VERT. 1"=50'  
 HORIZ. 1"=50'

DATE \_\_\_\_\_ DRAWN BY \_\_\_\_\_  
 CHECKED BY \_\_\_\_\_