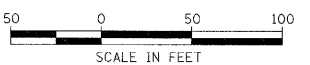
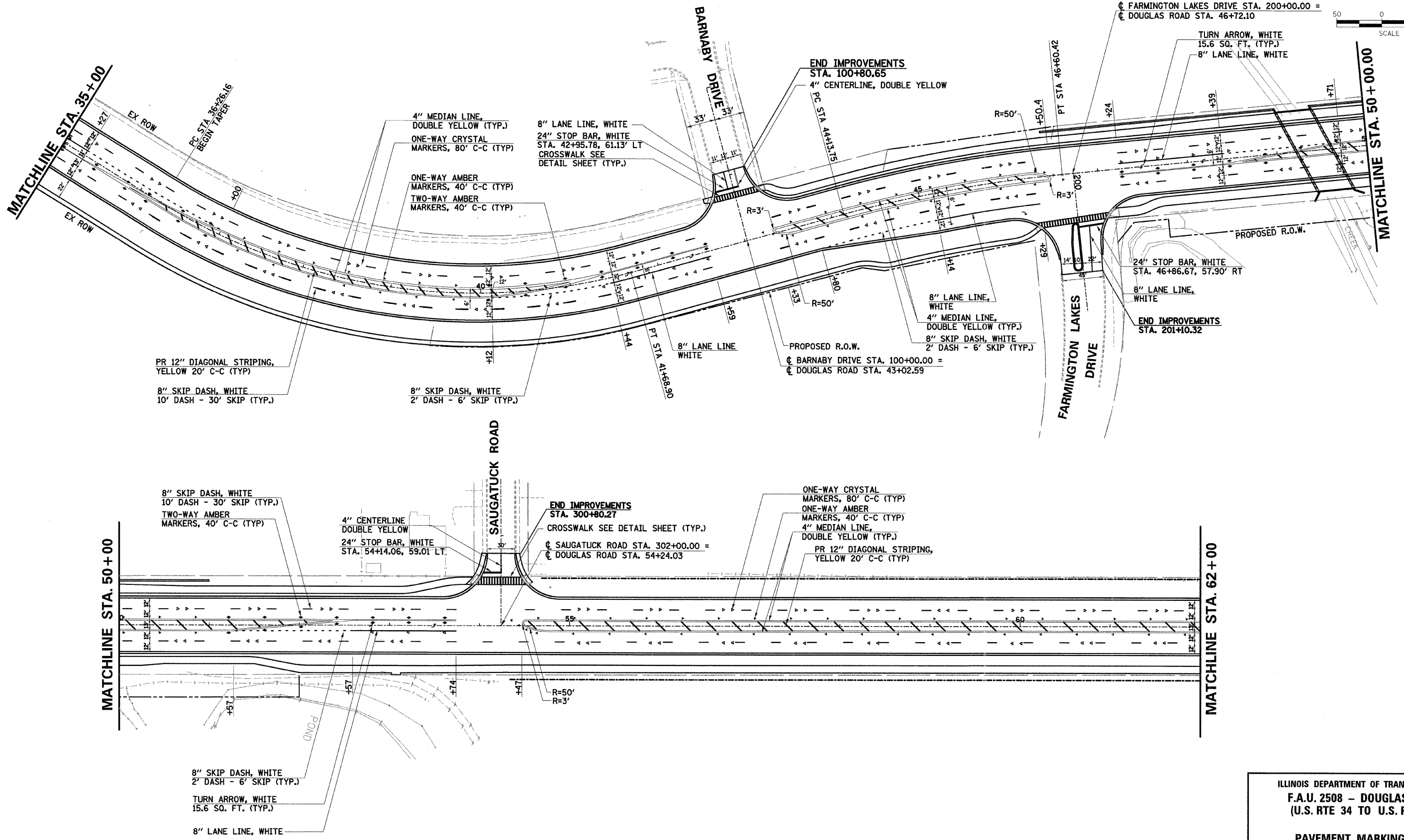


F.A.U. RTE.	SECTION	COUNTY	TOTAL SHEETS	SHEET NO.
2508	02-00039-00-PV	KENDALL	146	69
STA.	TO STA.			
FED. ROAD DIST. NO.	ILLINOIS	FED. AID PROJECT		



PLAN	SURVEYED	DATE
	PLOTTED	
	NOTED	
	BY	
	NO.	

PROFILE	SURVEYED	DATE
	PLOTTED	
	NOTED	
	BY	
	NO.	



ILLINOIS DEPARTMENT OF TRANSPORTATION
F.A.U. 2508 - DOUGLAS ROAD
(U.S. RTE 34 TO U.S. RTE 30)

PAVEMENT MARKING PLAN

SCALE: VERT. 1"=50'
HORIZ. 1"=50'

DATE _____ DRAWN BY _____
CHECKED BY _____

2452/21 AM
3/28/2007
Y:\Jobs\smi\1111\2008\010742_douglas\cadd\11n_dwg\142_pml02.dgn