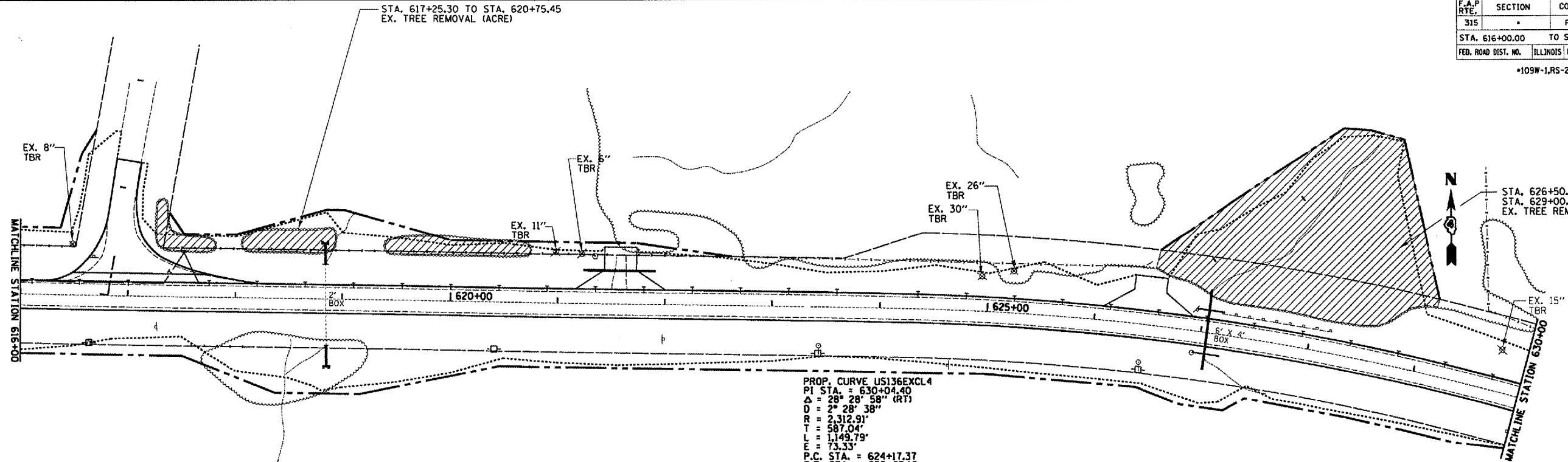


F.A.P. RTE.	SECTION	COUNTY	TOTAL SHEETS	SHEET NO.
315		FULTON	324	67
STA. 616+00.00 TO STA. 630+00.00				
FED. ROAD DIST. NO. ILLINOIS FED. AID PROJECT				
*109W-1,RS-2:110W,RS-1				

STA. 617+25.30 TO STA. 620+75.45
EX. TREE REMOVAL (ACRE)

STA. 626+50.00 TO STA. 629+00.00
EX. TREE REMOVAL (ACRE)

PLAN	DATE
REVISIONS	
ALIGNED	
CHECKED	
DATE FILE NAME	
NO.	

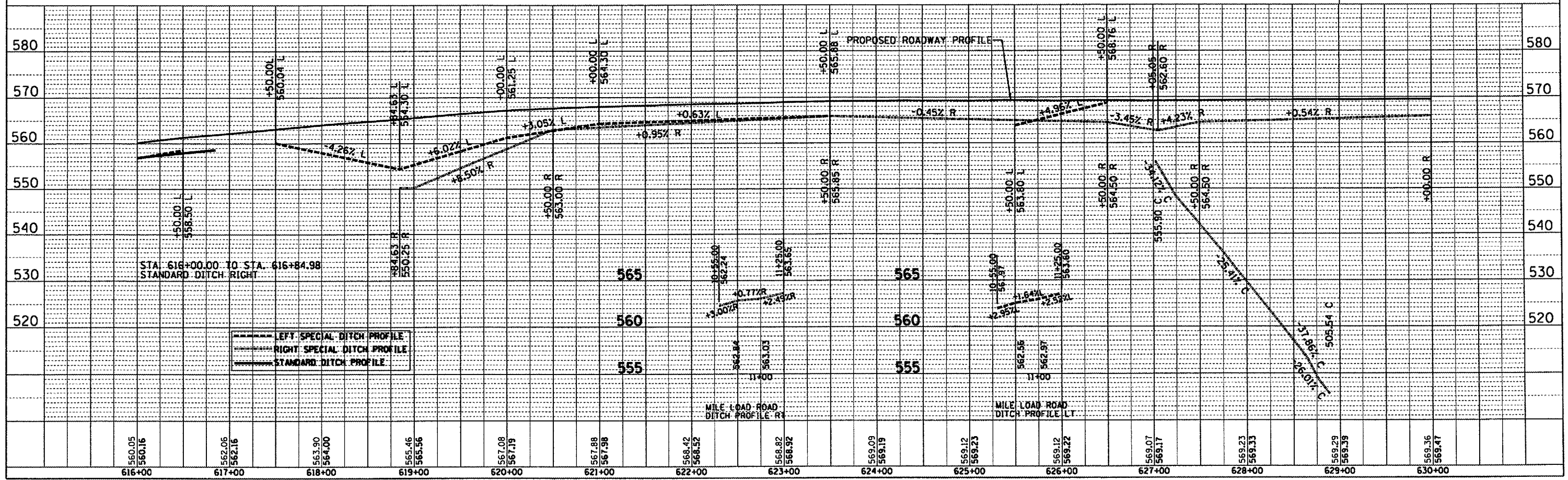


PROP. CURVE US136EXCL4
 P.I. STA. = 630+04.40
 $\Delta = 28^\circ 28' 58''$ (RT)
 $D = 2^\circ 28' 38''$
 $R = 2,312.91'$
 $T = 587.04'$
 $L = 1,149.79'$
 $E = 73.33'$
 P.C. STA. = 624+17.37
 P.T. STA. = 635+67.16
 S.E. = 2.8%
 BEGIN SUPER TRANSITION AT STA. 623+30.13
 FULL SUPER IS OBTAINED AT STA. 624+41.13
 FULL SUPER IS MAINTAINED TO STA. 635+43.40
 NORMAL CROWN IS RESUMED AT STA. 636+54.40

EX. TREE REMOVAL (ACRE)

TREE REMOVAL PLAN

PROFILE	DATE
REVISIONS	
CHANGED	
CHECKED	
STRUCTURE NOTATIONS OK'D	
NO.	



US136SUM/PP12.DCN