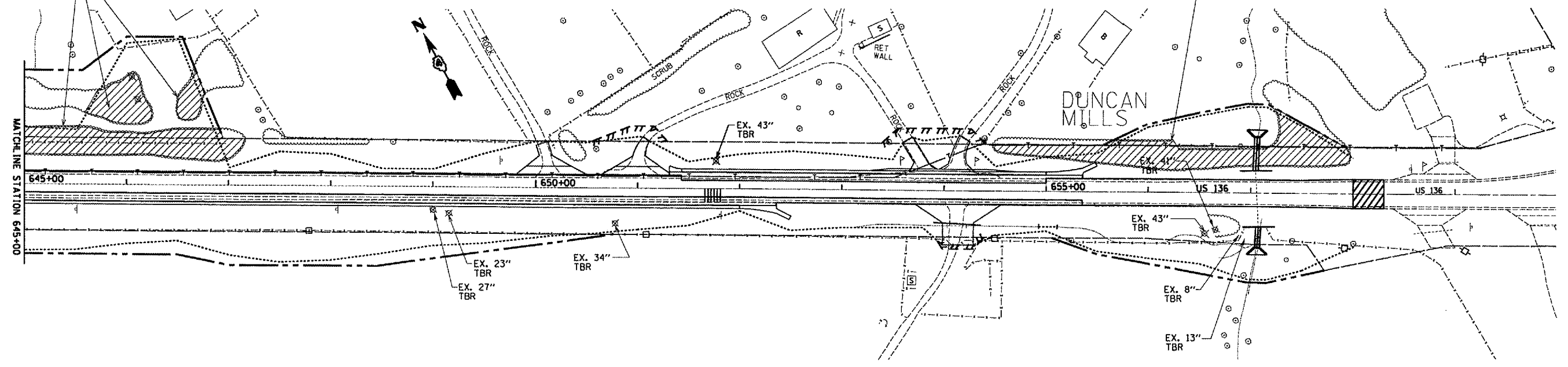


F.A.P. RTE.	SECTION	COUNTY	TOTAL SHEETS	SHEET NO.
315	EVLTON	ILLINOIS	329	69
STA. 645±00.00 TO STA. 658±00.00				
FED. ROAD DIST. NO. ILLINOIS FED. AID PROJECT				
*109W-1,RS-2110W,RS-1				

STA. 645+00.00 TO STA. 647+00.00
EX. TREE REMOVAL (ACRE)

STA. 654+50.00 TO STA. 658+00.00
EX. TREE REMOVAL (ACRE)

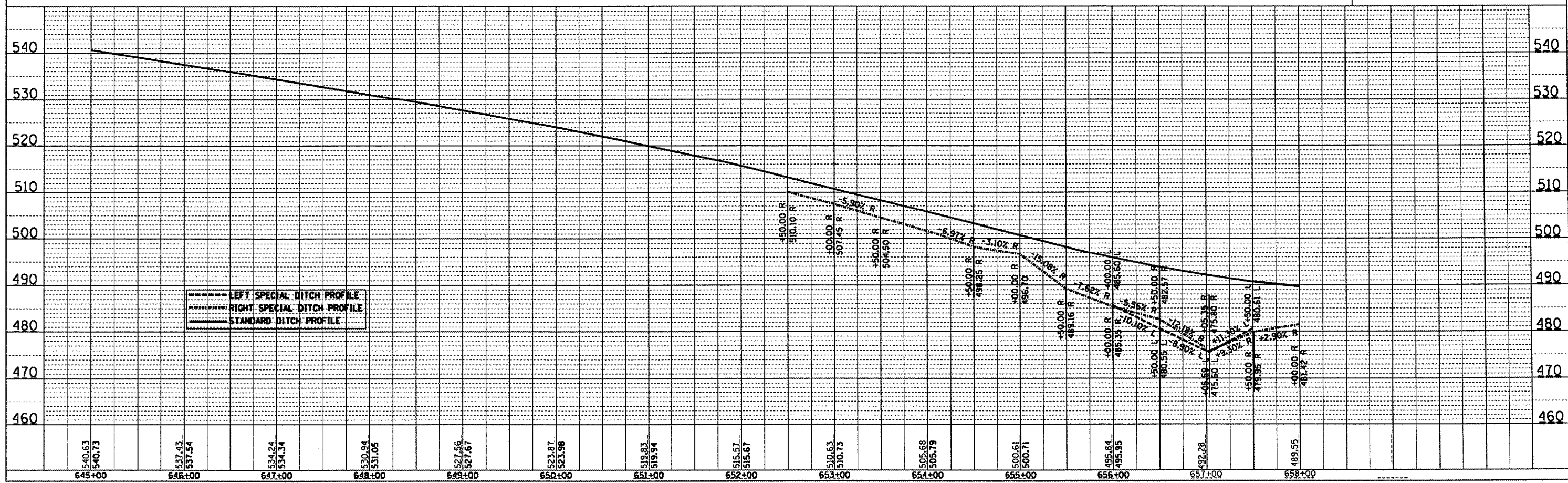
DATE	BY



EX. TREE REMOVAL (ACRE)

TREE REMOVAL PLAN

DATE	BY



US136SUM/PP14.DGN