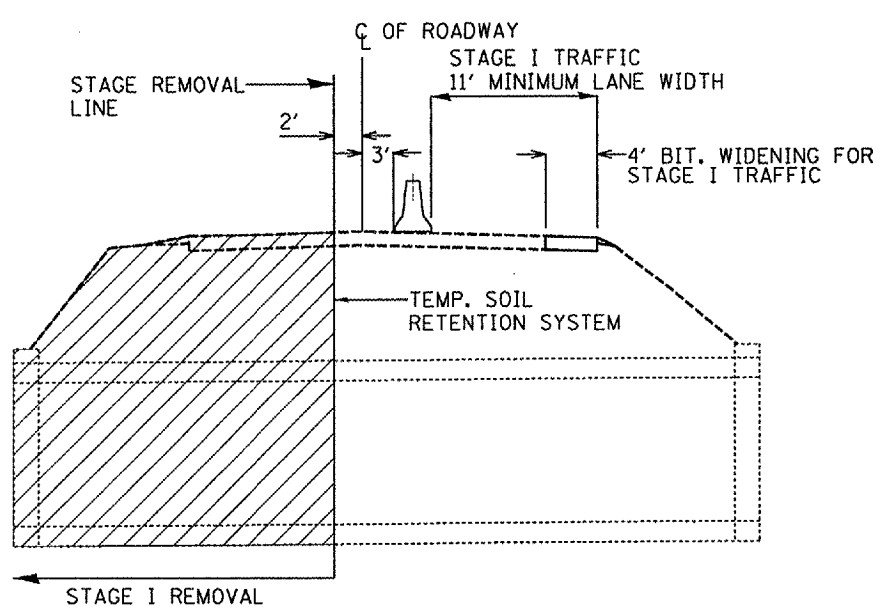
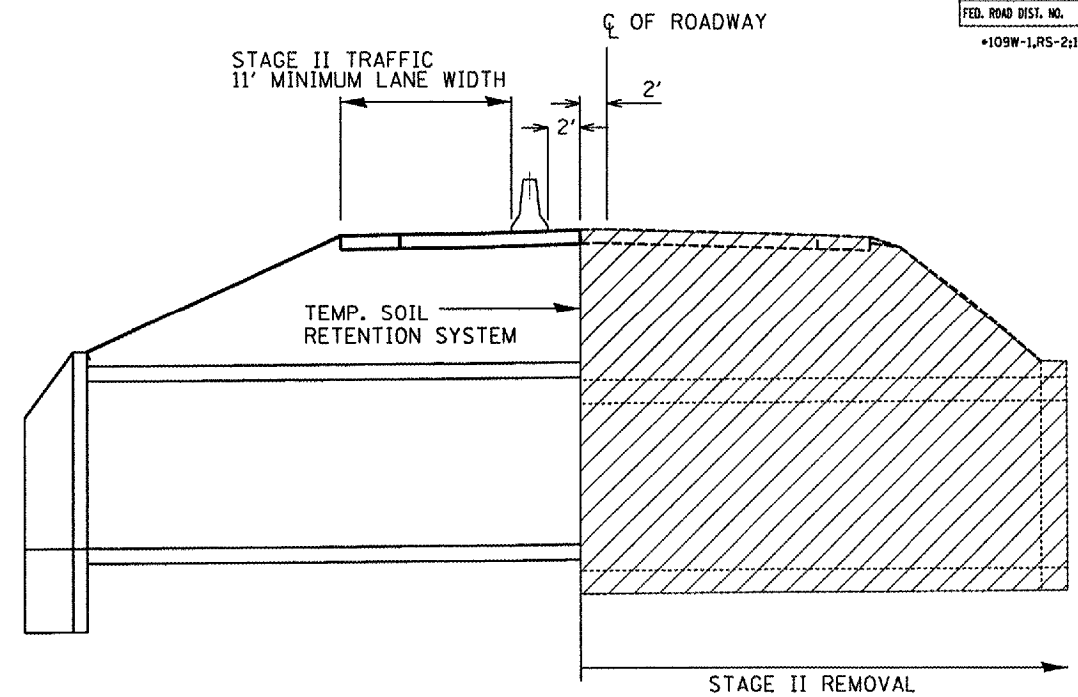


F.A.P. RTE.	SECTION	COUNTY	TOTAL SHEETS	SHEET NO.
315	.	FULTON	324	86
STA.		TO STA.		
FED. ROAD DIST. NO.		ILLINOIS FED. AID PROJECT		

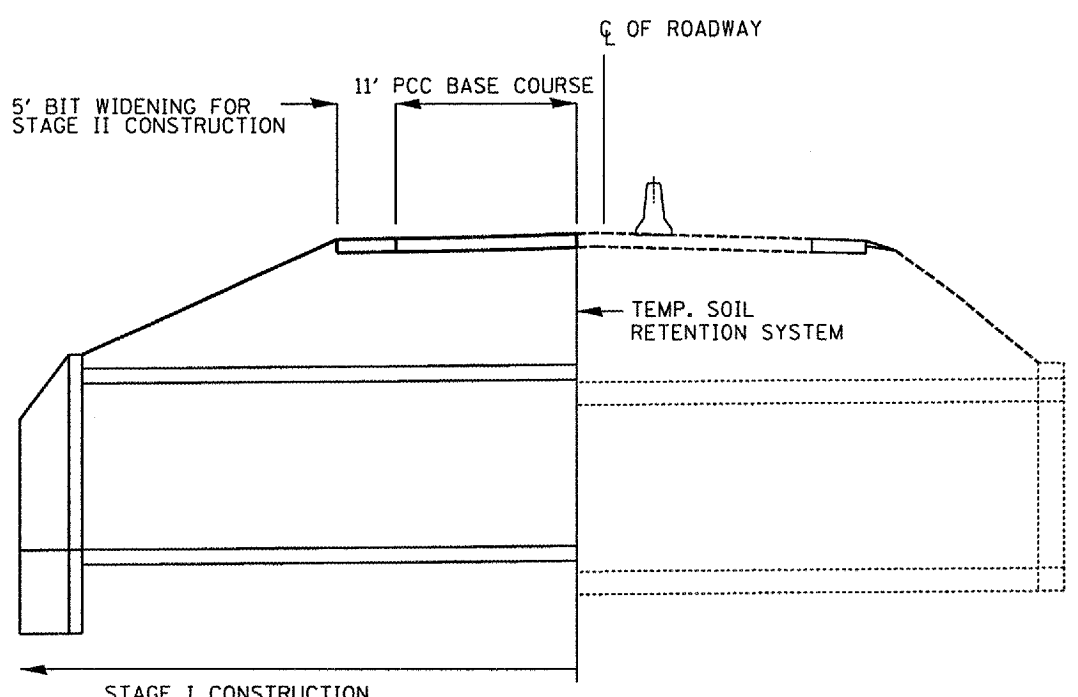
*109W-1,RS-2;110W,RS-1



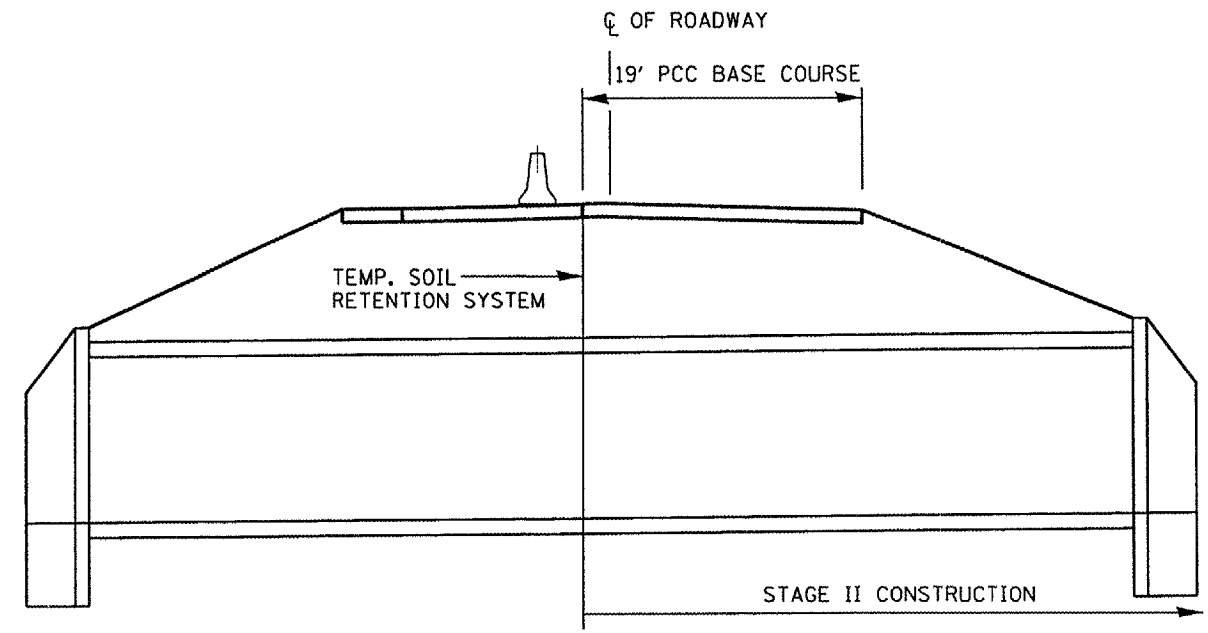
STAGE I REMOVAL
(Looking East)



STAGE II REMOVAL
(Looking East)



STAGE I CONSTRUCTION
(Shown Perpendicular to US 136 Baseline)



STAGE II CONSTRUCTION
(Shown Perpendicular to US 136 Baseline)

• MAINTAIN 1.5% CROSSLOPE IN EACH DIRECTION FROM CENTERLINE OF ROADWAY

REVISIONS	
NAME	DATE

ILLINOIS DEPARTMENT OF TRANSPORTATION
STAGE CONSTRUCTION DETAIL
CULVERT AT STA. 539+54.90
SCALE: VERT. NONE
HORIZ. DATE 06/27/2006
DRAWN BY CEM
CHECKED BY CEM

PLOT DATE: 06/27/2006
FILE NAME: c:\projects\136\136stage1.dgn
PLOT SCALE: 1/8"=1'-0"
USER NAME: meahar-dea