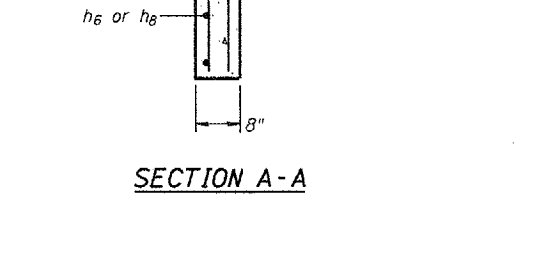
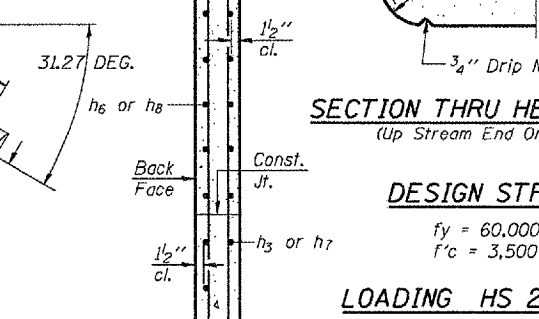
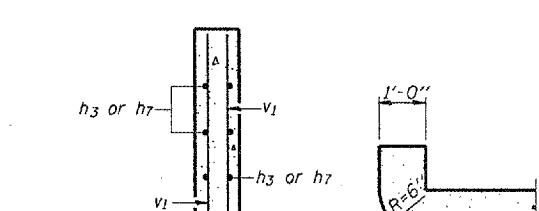
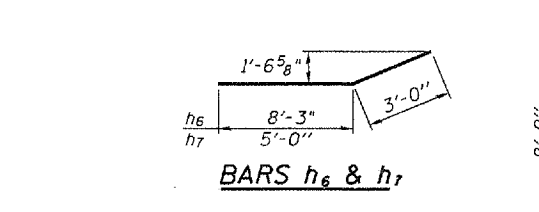
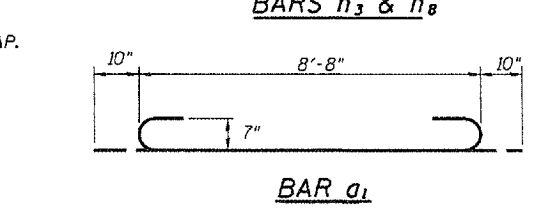
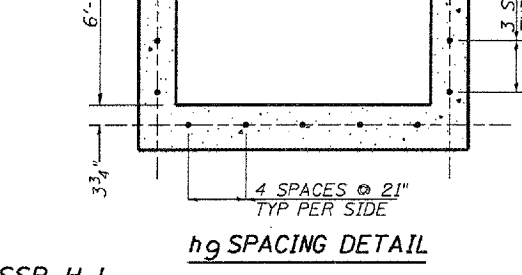
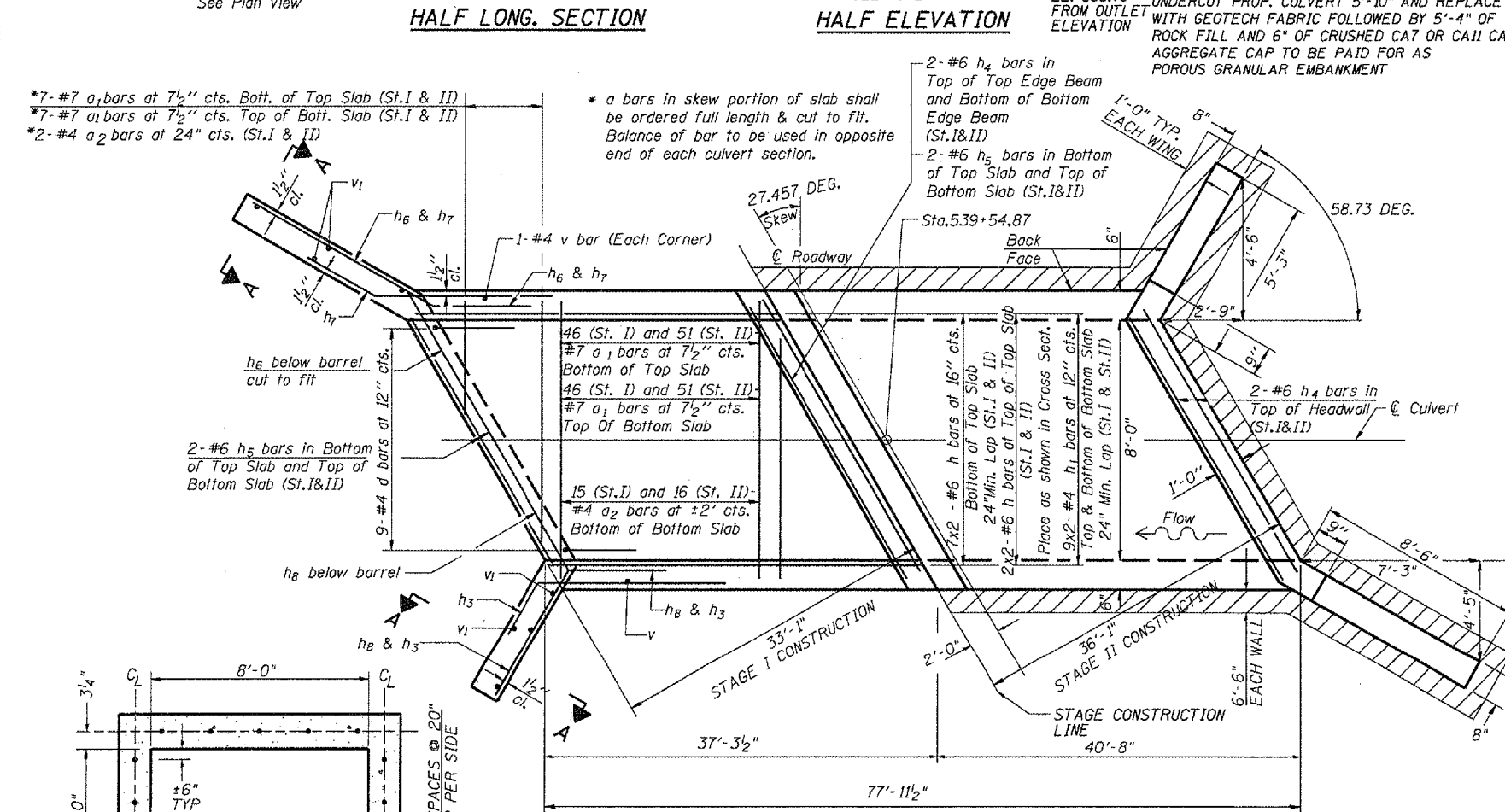
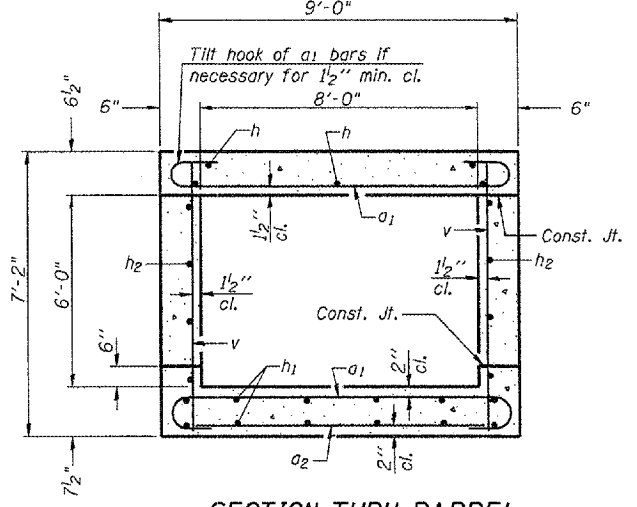
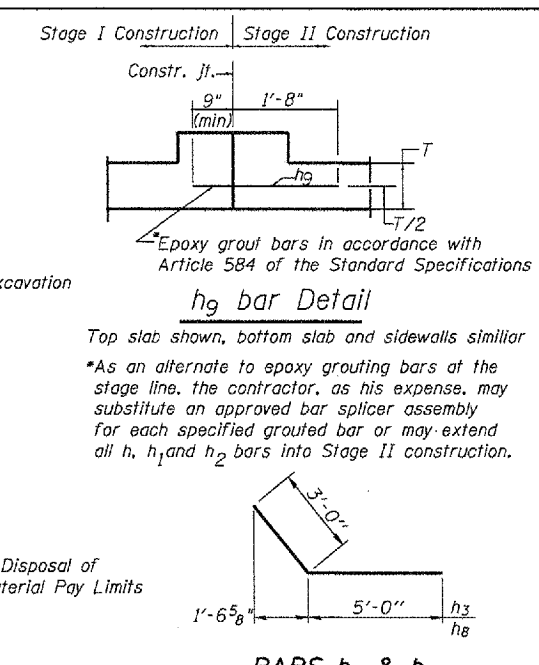
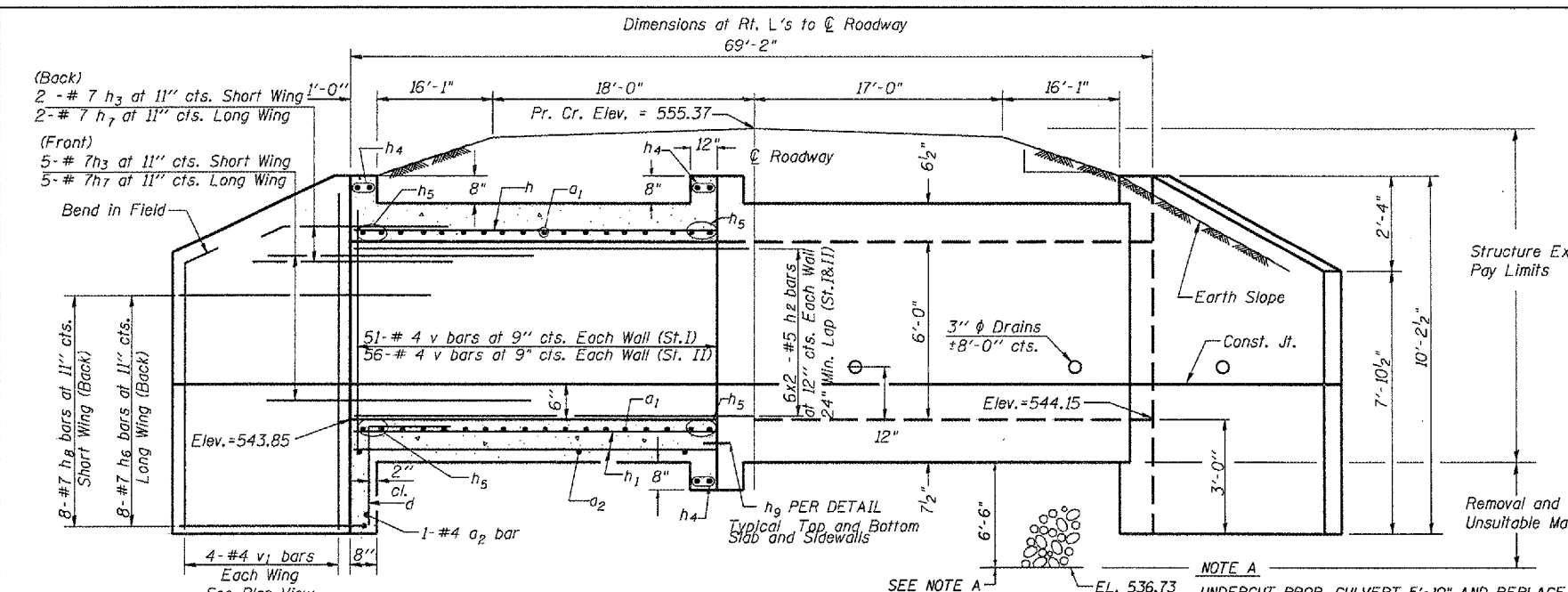


F.A.R. RTE.	SECTION	COUNTY	TOTAL SHEETS	SHEET NO.
315	-	FULTON	324	57
STA.		TO STA.		
FED. ROAD DIST. NO.		ILLINOIS FED. AID PROJECT		



SECTION THRU BARREL
BILL OF MATERIAL

Bar	No.	Size	Length	Shape
a1	208	#7	10'-4"	
a2	35	#4	8'-4"	
d	18	#4	4'-6"	
h	36	#6	21'-4"	
h1	72	#4	21'-4"	
h2	48	#5	21'-4"	
h3	14	#7	8'-0"	
h4	12	#6	10'-0"	
h5	16	#6	10'-0"	
h6	16	#7	11'-3"	
h7	14	#7	8'-0"	
h8	16	#7	8'-0"	
h9	18	#5	2'-5"	
v	214	#4	6'-10"	
v1	16	#4	9'-7"	

Concrete Box Culverts	Cu. Yd.	57.2
Reinforcement Bars Epoxy Coated	Pound	11,084
Removal of Exist. Str.	Each	1
Removal & Disposal Of Unsuitable Mat'l	Cu. Yd.	355
Porous Granular Embankment	Ton	64
Rock Fill	Ton	750
Geotechnical Fabric for Ground Stabilization	Sq. Yd.	183
Temporary Soil Retention System	Sq. Ft.	524
Structure Excavation	Cu. Yd.	216

DESIGN STRESSES
fy = 60,000 psi
f'c = 3,500 psi

LOADING HS 20-44 & ALT.

PRECAST OPTION NOT ALLOWED

NOTES
A distance of half the length of the wingwall but not less than six feet of the barrel shall be poured monolithically with the wingwalls.
Reinforcement Bars shall conform to the requirements of AASHTO M-31, M-42 or M-53, Grade 60.
Bars indicated thus 12 x 4-#5 etc. indicates 12 lines of bars with 4 lengths per line.
All construction joints shall be bonded.
SHALE LAYER MAY BE ENCOUNTERED WITHIN THE RECOMMENDED DEPTH OF UNDERCUT. IF ENCOUNTERED DURING THE UNDERCUT OPERATION, FURTHER UNDERCUT INTO THE SHALE LAYER IS NOT REQUIRED

REVISIONS

NAME	DATE

ILLINOIS DEPARTMENT OF TRANSPORTATION
**8 X 6 BOX CULVERT
STATION 539+54.90**
SCALE: VERT. NONE
HORIZ. DATE 03/02/2006
DRAWN BY CEM
CHECKED BY

SSB-H-L