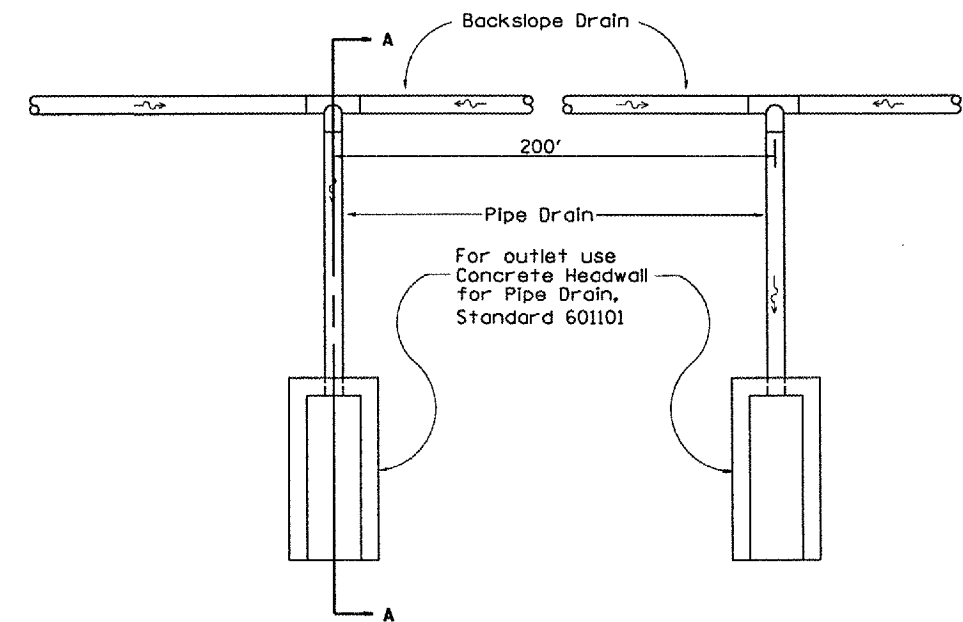
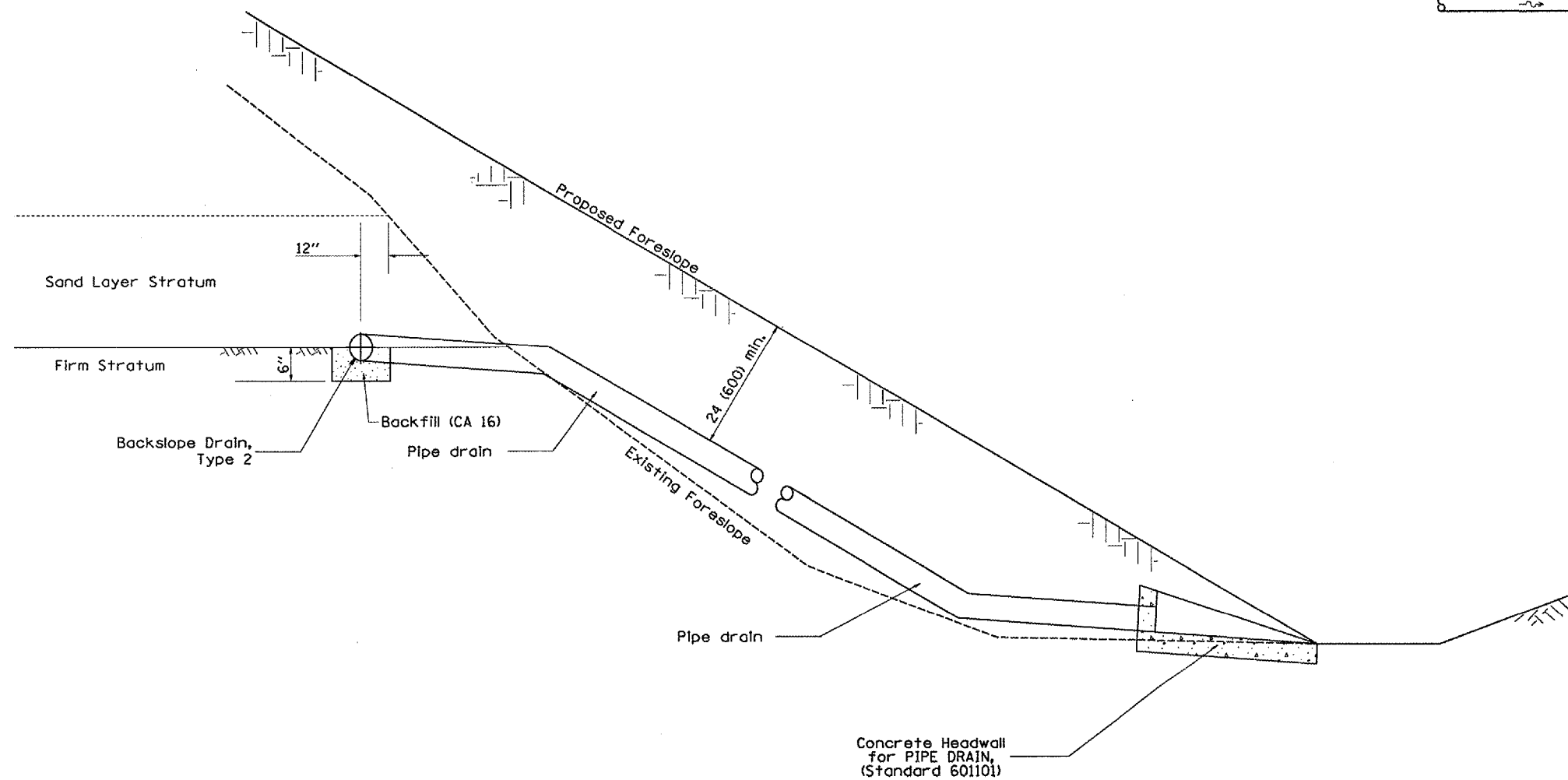


F.A.P. RTE.	SECTION	COUNTY	TOTAL SHEETS	SHEET NO.
315	*	FULTON	324	105
STA.		TO STA.		
FED. ROAD DIST. NO.	ILLINOIS	FED. AID PROJECT		
*109W-1,RS-2;110W,RS-1				



2. This work shall be done in accordance with the applicable portion of Articles 601 and 207 of the Standard Specifications.

ILLINOIS DEPARTMENT OF TRANSPORTATION	
BACKSLOPE DRAINS, TYPE 2 6"	
SCALE: NOT DRAWN TO SCALE	DRAWN BY CEM CHECKED BY HS

c:/projects/us136sum/us136culvert/ts.dgn