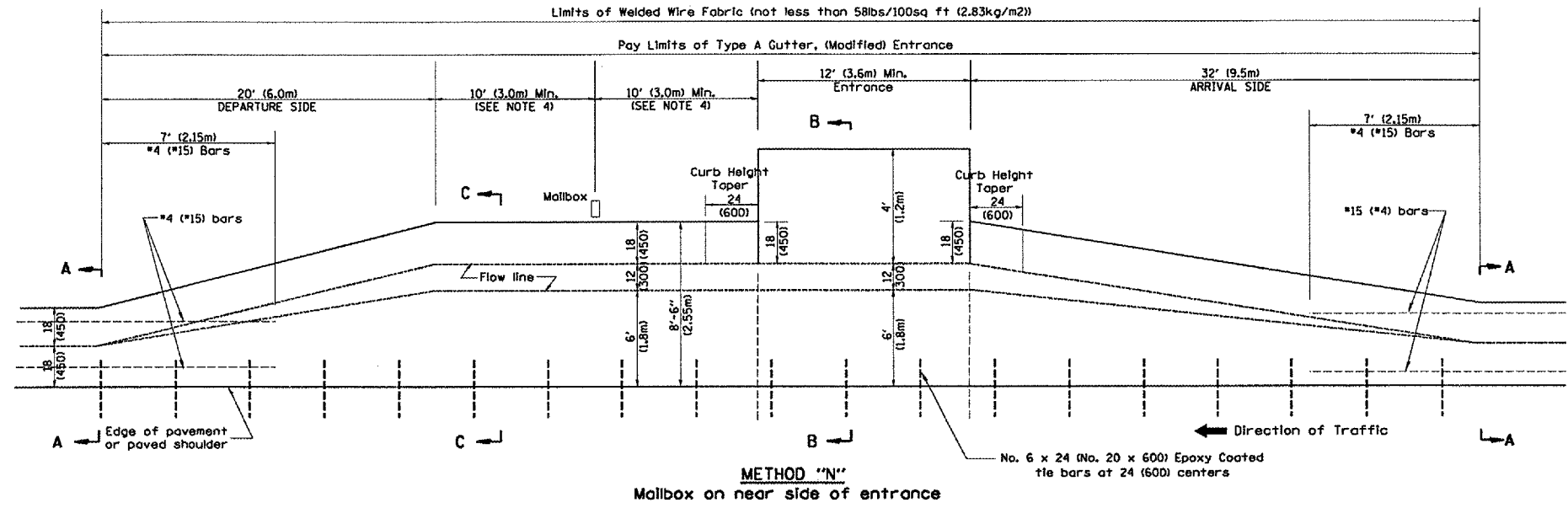
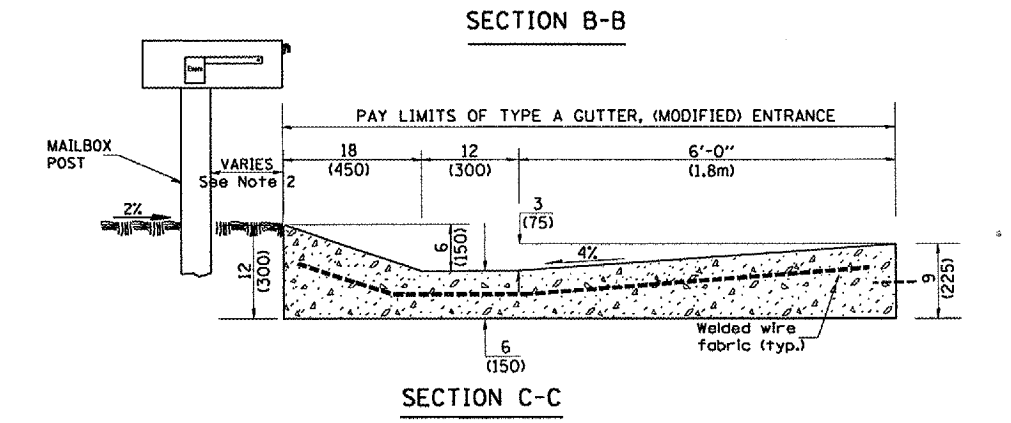
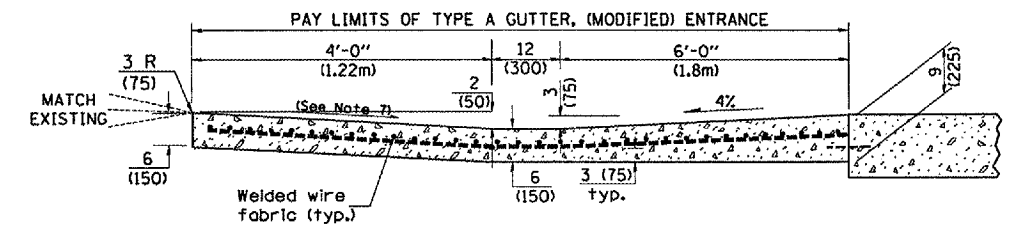
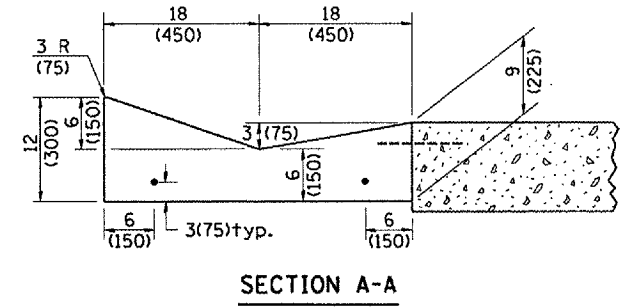
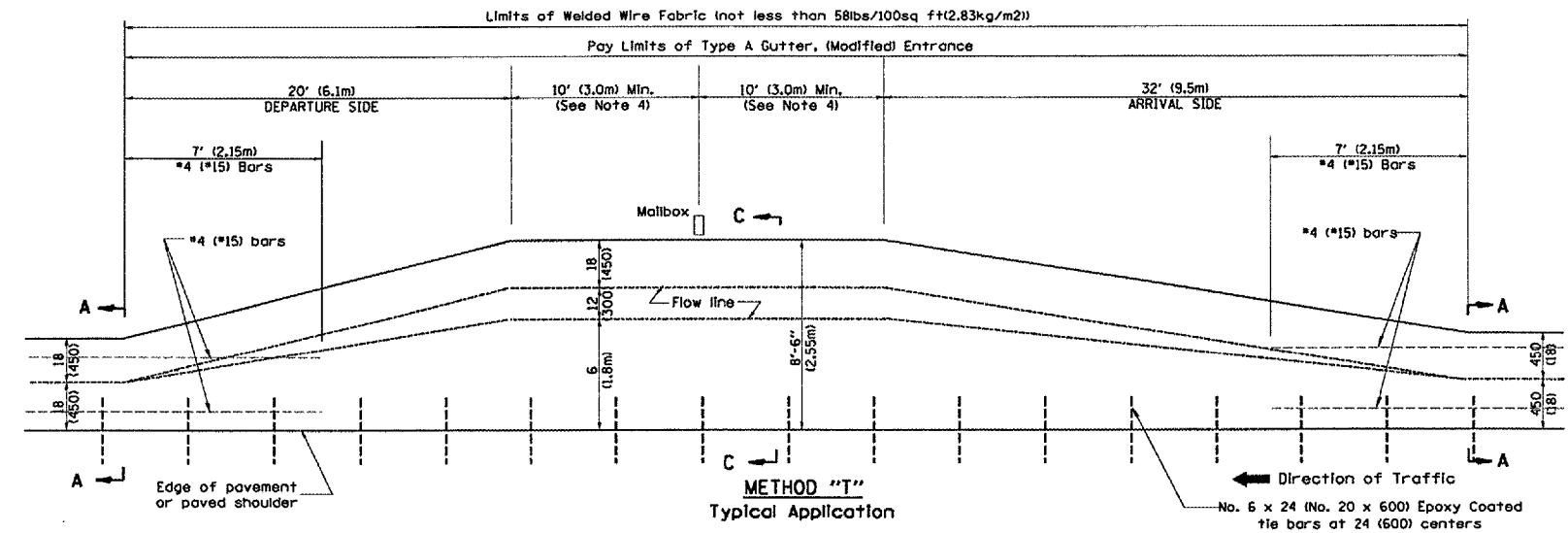


F.A.P. RTE.	SECTION	COUNTY	TOTAL SHEETS	SHEET NO.
315		FULTON	324	114
STA.		TO STA.		
FED. ROAD DIST. NO. 4 ILLINOIS FED. AID PROJECT				

\*109W-1,RS-2;110W,RS-1

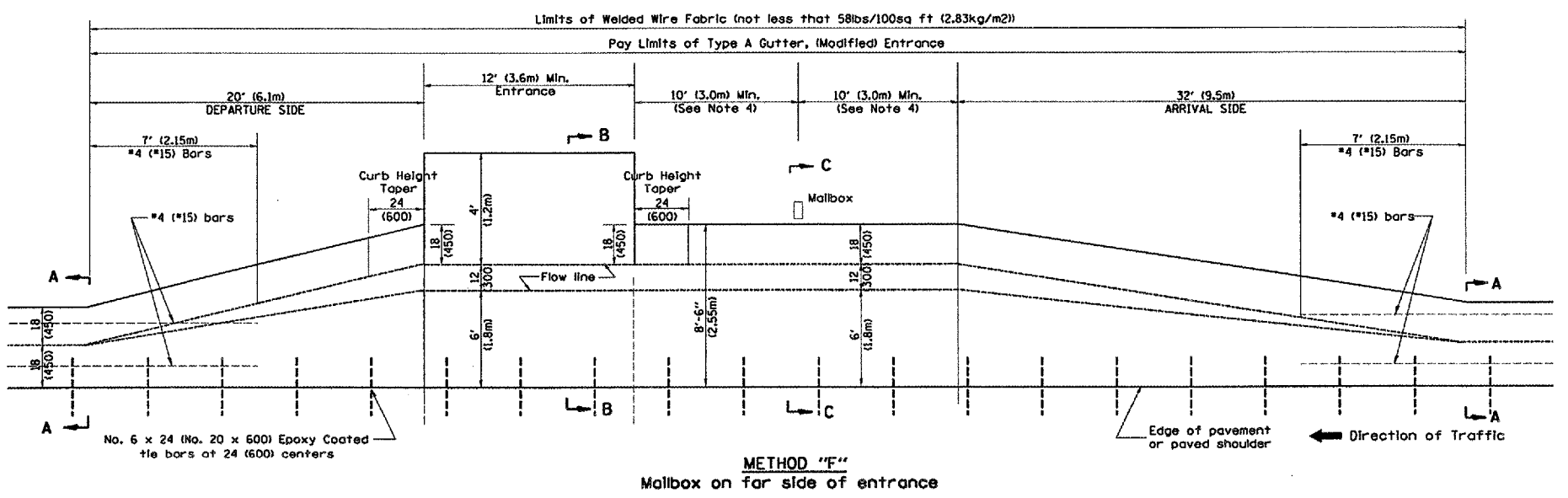


LOCATION	LENGTH	CU YD / FT	CU M / M
Arrival Side	32 ft (9.5 m)	0.14	0.35
Section B-B	12 ft (3.6 m) Min.	0.23	0.57
Section C-C	20 ft (6.0 m) Min.	0.20	0.50
Departure Side	20 ft (6.1 m)	0.14	0.35

**GENERAL NOTES**

- See plans for turnout slopes on super elevated horizontal curves.
- Mailboxes shall be mounted such that the face of the mailbox is vertically above the back of the gutter.
- The mailbox turnout shall be saw cut at approximately 10'-0" (3.0m) centers.
- If more than one mailbox is present, this dimension shall be measured from the end box in each direction.
- Refer to the plans for entrance width, length and surface type.
- The cross slope is to be constructed as given in the plans from back of turnout to where driveway matches existing.
- Slope may be increased from 4% (min.) to 6% (max.) in order to match the existing.

All dimensions are in inches (millimeters) unless otherwise noted.



DATE	REVISIONS	BY
10-16-06	REVISED TO 2007 SPEC.	M.A.

ILLINOIS DEPARTMENT OF TRANSPORTATION  
**DISTRICT CADD STANDARD**  
**MAILBOX TURNOUTS IN TYPE A GUTTER, (MODIFIED) SECTION**  
 CADD STD NO. 406211-04  
 SCALE: NOT DRAWN TO SCALE  
 DRAWN BY: CADD  
 CHECKED BY: T. PICKERING

cs/projects/us136sum/us136culvert.s.dgn